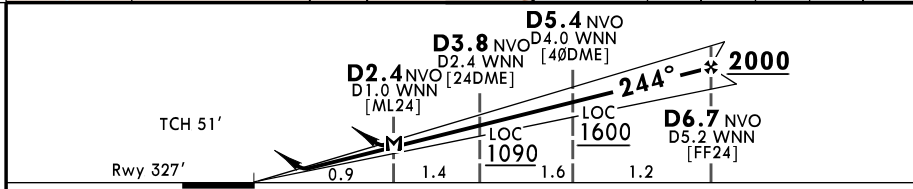
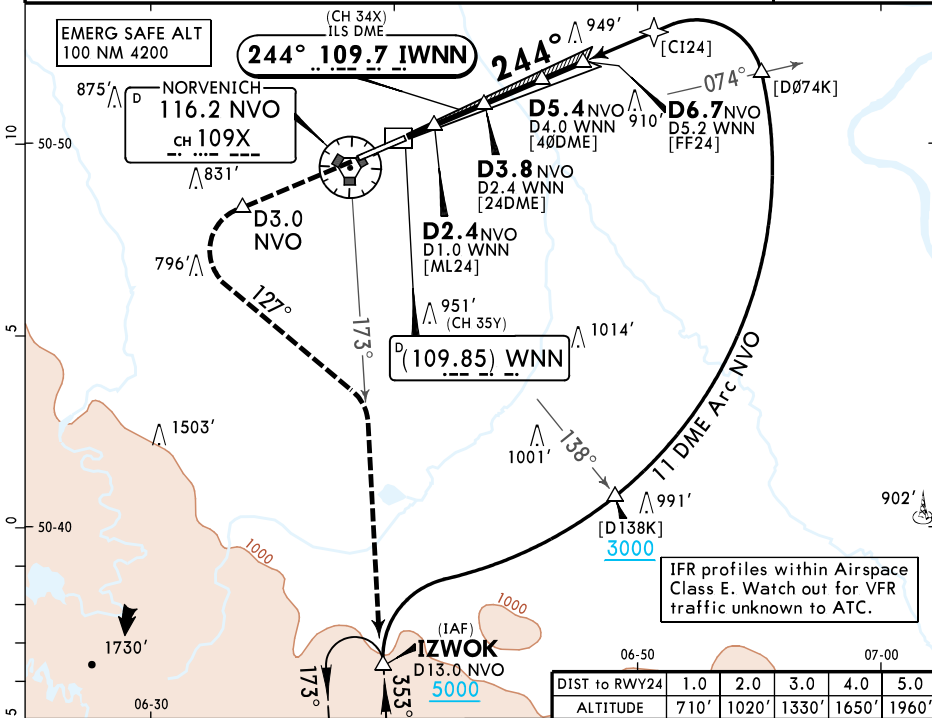
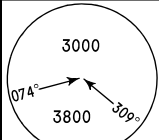


ADDITIONAL RUNWAY INFORMATION						
RWY	HIRL HIALS SFL PAPI (angle 3.0°)	RVR	USABLE LENGTHS BEYOND		TAKE-OFF	WIDTH
			Threshold	Glide Slope		
06 24			7038'	2145m		148' 45m

① Rwy with antiskid layer.

Std/State		TAKE-OFF			
Low Visibility Procedures required		RCLM or RL	RL	Adequate Vis Ref	
Approval for Low Visibility Take-off required					
RCLM & RL & RVR		DAY	NIGHT	DAY	NIGHT
DAY	NIGHT				
R300m		R/V400m		R/V500m	NA

LANGEN Radar (APP) 135.350 344.550		*NORVENICH Radar 123.3 129.055 281.675		*NORVENICH Tower 122.1 136.205 285.075	
LOC IWNN 109.7 (CH 34X)	Final Apch Crs 244°	D6.7 NVO 2000 (1673')	ILS DA(H) Refer to Minimums	Apt Elev 380' Rwy 327'	
MISSED APCH: Climb STRAIGHT AHEAD to 5000'. At D3.0 NVO TACAN turn LEFT (MAX 250 KT) on track 127° to intercept and follow R-173 NVO TACAN to IAF and hold.					
Alt Set: hPa (IN on req)		Rwy Elev: 12 hPa	Trans level: By ATC	Trans alt: 5000'	MSA NVO TACAN



Gnd speed-Kts	70	90	100	120	140	160	HIALS PAPI PAPI D3.0 NVO ↑	
ILS GS or LOC Descent Angle	3.00°	372	478	531	637	743		849
MAP at D2.4 NVO/D1.0 WNN								

PANS OPS MIL	Military				STRAIGHT-IN LANDING		CIRCLE-TO-LAND	
	ILS DA(H) ABCD: 527 (200')		LOC (GS out) MDA(H) 670 (343')		HPMA			
	E: 606 (279')		ALS out		ALS out		Max KT	
	A	FULL		ALS out		100	810' (430') 500' - V2.0km	
	B	200' - R550m V0.8km		200' - V1.2km		135	950' (570') 600' - V2.6km	
C			400' - V0.9km		180	1400' (1020') 1100' - V4.9km		
D			400' - V1.6km		205	1300' (920') 1000' - V4.3km		
E	300' - R600m V0.8km		300' - V1.3km		E			