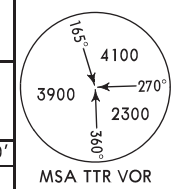
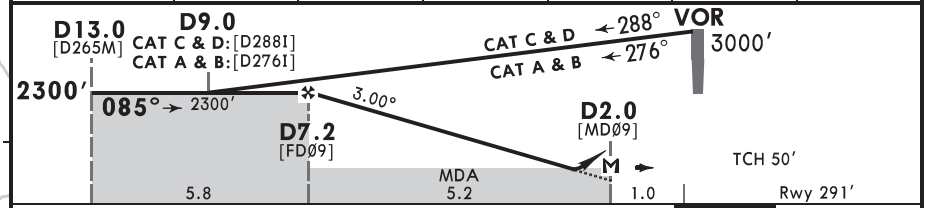


D-ATIS 127.8		TIRUCHIRAPPALLI Approach 124.0		TIRUCHIRAPPALLI Tower 118.3	
VOR TTR 113.1	Final Apch Crs 085°	D7.2 2300' (2009')	MDA(H) 700' (409')	Apt Elev 292'	Rwy 291'
MISSED APCH: Climb STRAIGHT AHEAD to 2000', then climbing turn RIGHT to join VOR holding at 3000', or as directed. MAX 185 KT.					
Alt Set: hPa		Rwy Elev: 11 hPa	Trans level: By ATC	Trans alt: 4000'	
1. DME required. 2. Base turn initial approach speed for CAT C & D restricted to MAX 220 KT.					



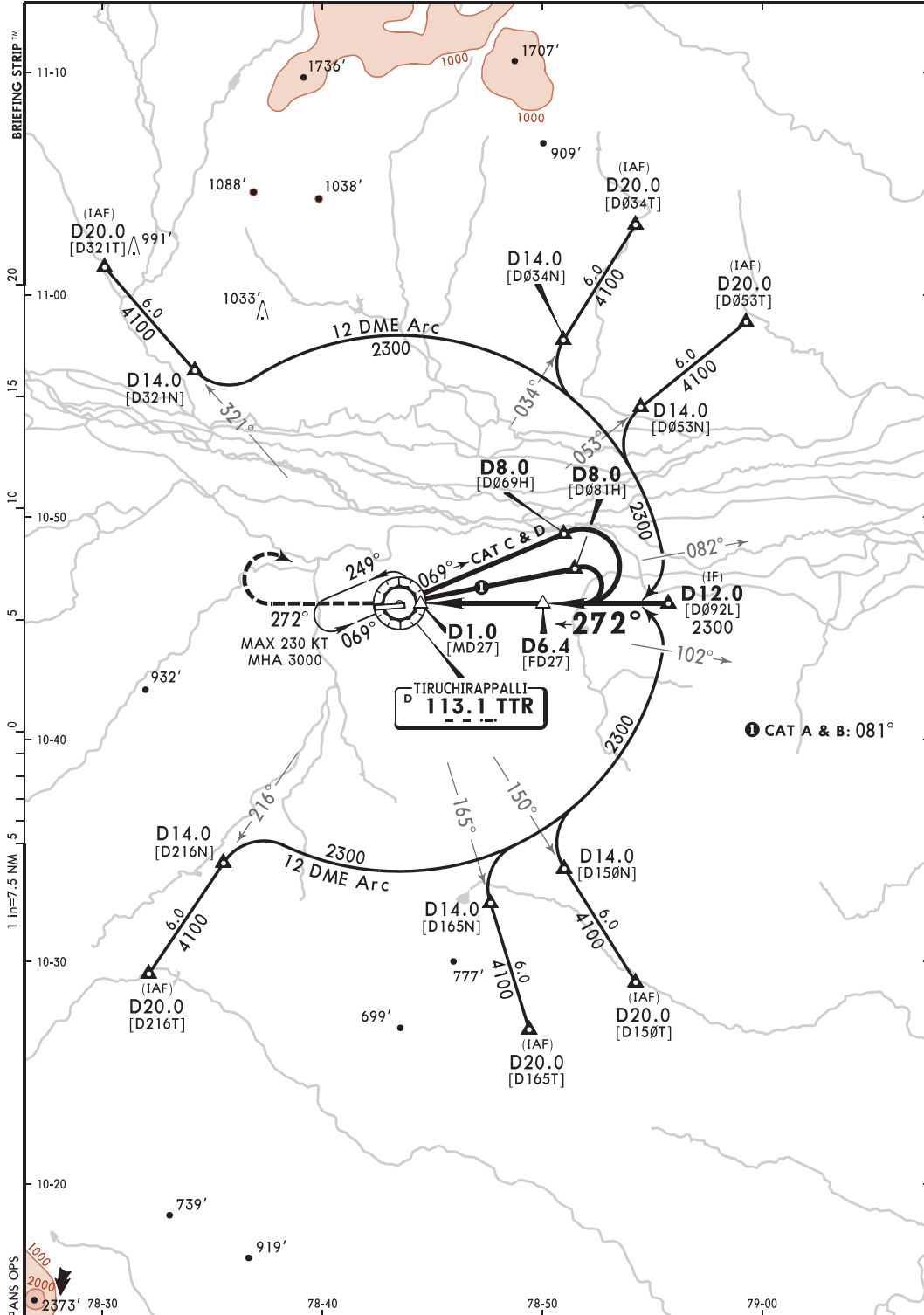
TTR DME	7.2	7.0	6.0	5.0	4.0	3.0
ALTITUDE	2300'	2240'	1920'	1610'	1290'	970'



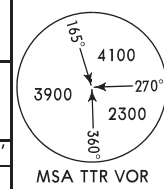
Gnd speed-Kts	70	90	100	120	140	160	HIALS PAPI-L	185 KT MAX	2000' ↑
Descent Angle 3.00°	372	478	531	637	743	849			

MAP at D2.0		STRAIGHT-IN LANDING CDFA	
Std/State		MDA(H) 700' (409')	
A		ALS out	
B		R1500m	
C		R1900m	
D			

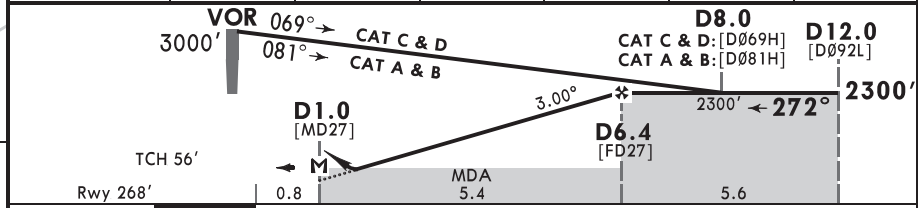
■ VNAV DA(H) in lieu of MDA(H) requires height loss adjustment.



D-ATIS 127.8		TIRUCHIRAPPALLI Approach 124.0		TIRUCHIRAPPALLI Tower 118.3	
VOR TTR 113.1	Final Apch Crs 272°	D6.4 2300' (2032')	MDA(H) 760' (492')	Apt Elev 292'	Rwy 268'
MISSED APCH: Climb STRAIGHT AHEAD to 2000', then climbing turn RIGHT to join VOR holding at 3000', or as directed. MAX 230 KT.					
Alt Set: hPa		Rwy Elev: 10 hPa		Trans level: By ATC	
				Trans alt: 4000'	
1. DME required. 2. Base turn initial approach speed for CAT C & D restricted to MAX 210 KT.					



TTR DME	2.0	3.0	4.0	5.0	6.0	6.4
ALTITUDE	900'	1220'	1530'	1850'	2170'	2300'



Gnd speed-Kts	70	90	100	120	140	160	HIALS PAPI 230 KT MAX 2000'
Descent Angle 3.00°	372	478	531	637	743	849	

MAP at D1.0		STRAIGHT-IN LANDING CDFA	
Std/State		MDA(H) 760' (492') ALS out	
A	R1500m	R1500m	
B		R1500m	
C		R2300m	
D		R2300m	

VNAV DA(H) in lieu of MDA(H) requires height loss adjustment.