

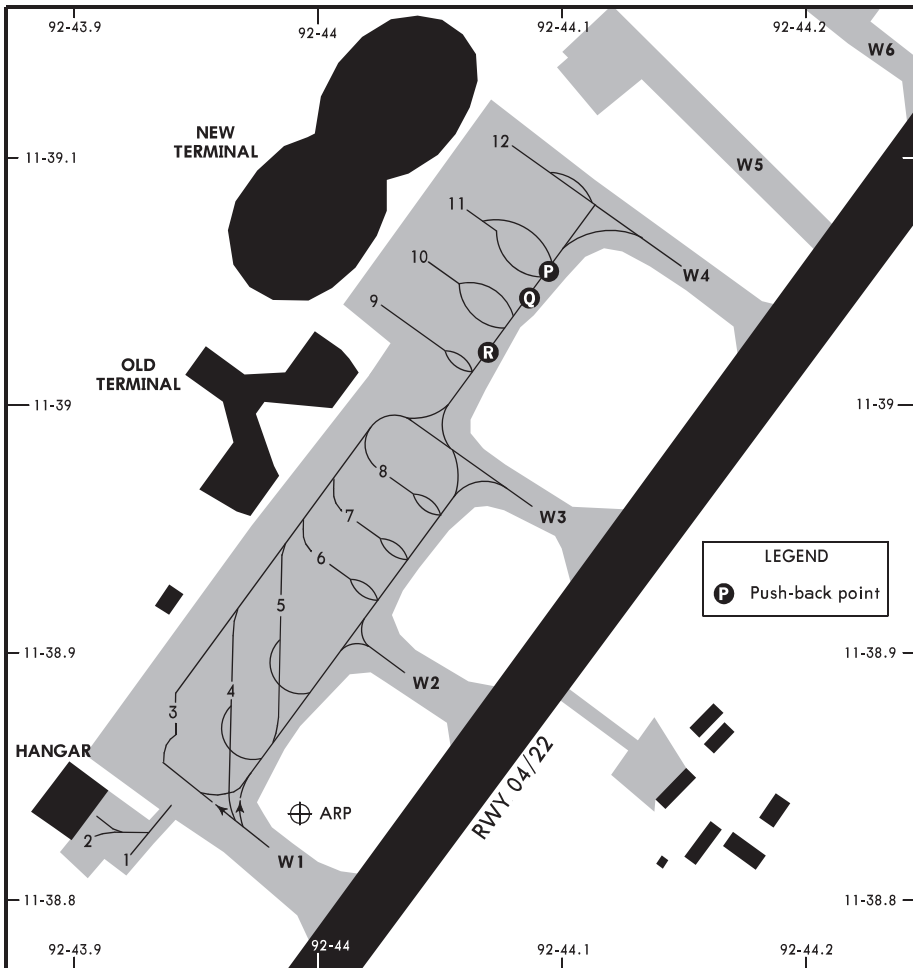
Pilots should exercise caution due to bird deterrent equipment installed 143'/43.5m West of RWY 04 between Distance-To-Go-Marker 5 and 4.

ABN.
During monsoon/heavy rain water logging may occur.

RWY	ADDITIONAL RUNWAY INFORMATION				
	HIRL (60m)	CL (15m)	USABLE LENGTHS		WIDTH
			Threshold	Glide Slope	
04	HIRL (60m)	CL (15m)	①	HIALS TDZ PAPI-L (3.0°)	148'
22	HIRL (60m)			NA	45m

① length 329m, configuration unknown.

Std/State	TAKE-OFF
	R550m V800m

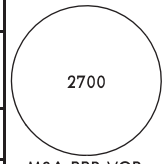


LEGEND

P Push-back point

INS COORDINATES			
STAND No.	COORDINATES	ELEV	
1, 2	N11 38.8 E092 43.9	19	Stands 9 thru 12 push-back required. Code C ACFT: From stand 9 push/pull to Point R to exit via twy W4. From stand 10 push-back to Point R or push/pull to Point P to exit via twy W4. From stand 11 push-back to Point Q or push/pull to Point P to exit via twy W4. From stand 12 push-back to Point P to exit via twy W4. VDGS available: stands 10 thru 12.
3	N11 38.9 E092 43.9	21	
4	N11 38.9 E092 44.0	21	
5, 6	N11 38.9 E092 44.0	23	
7	N11 39.0 E092 44.0	23	
8	N11 39.0 E092 44.0	24	
9	N11 39.0 E092 44.0	25	
10	N11 39.1 E092 44.0	27	
11	N11 39.1 E092 44.1	28	
12	N11 39.1 E092 44.1	30	

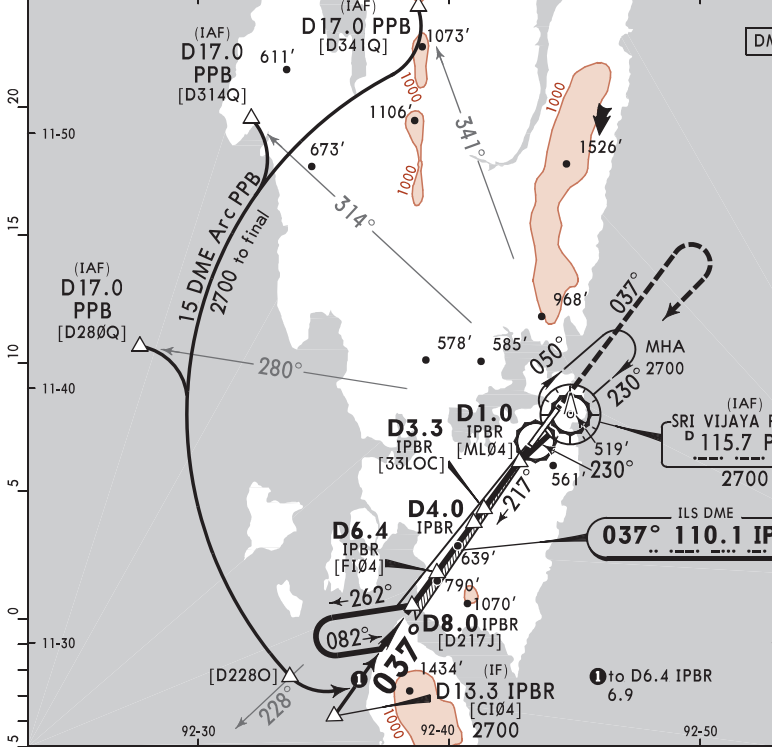
*ATIS 126.4		*SRI VIJAYA PURAM Approach (R) 123.5		*SRI VIJAYA PURAM Tower 118.1	
LOC IPBR 110.1	Final Apch Crs 037°	D6.4 IPBR 2100'(2007')	ILS DA(H) 400' (307')	Apt Elev 93' Rwy 93'	



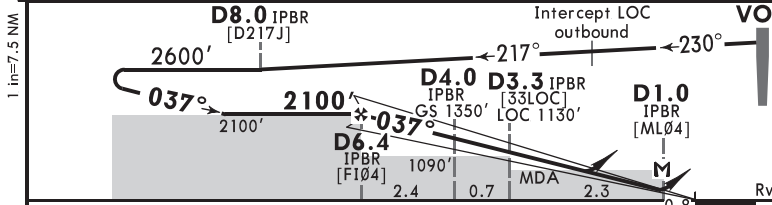
MISSED APCH: Climb STRAIGHT AHEAD to 2700', then turn RIGHT to VOR and join holding at 2700', or as directed.

Alt Set: hPa Rwy Elev: 3 hPa Trans level: By ATC Trans alt: 4000'

MSA PPB VOR



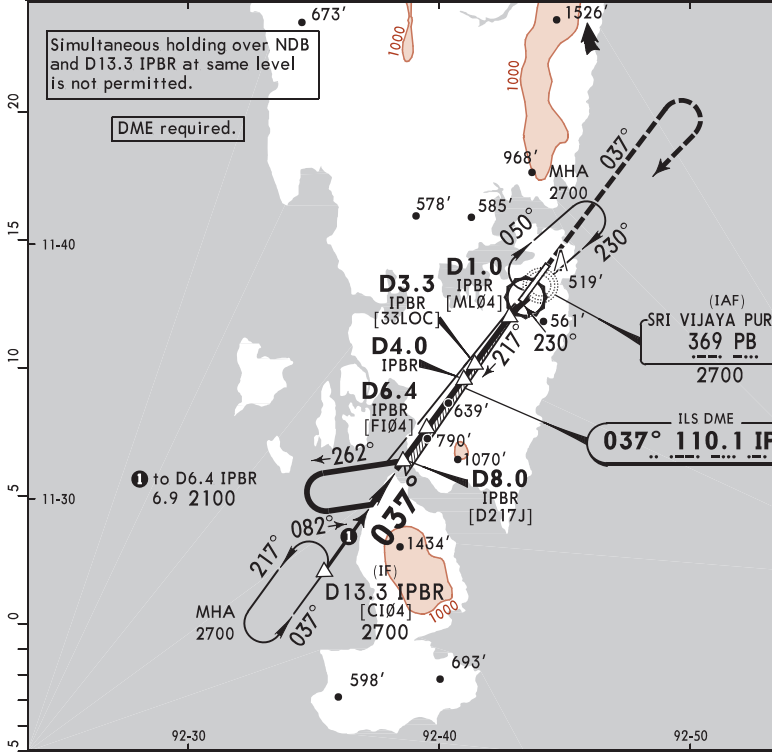
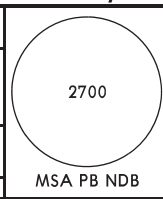
RECOMMENDED ALTITUDES	
IPBR DME	ALTITUDE
6.0	1990'
5.0	1670'
4.0	1350'
3.3	1130'
3.0	1030'
2.0	710'



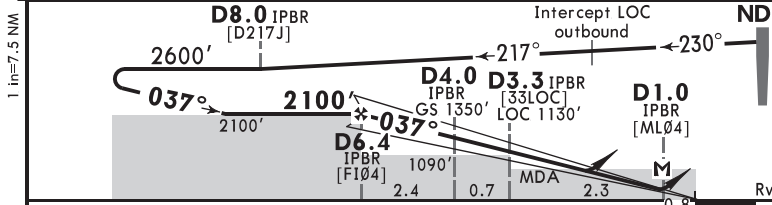
Gnd speed-Kts	70	90	100	120	140	160		HIALS	2700'	PPB	115.7
ILS GS or LOC Descent Angle	3.00°	372	478	531	637	743	849	PAPI-L	↑	↗	RT

PANS OPS	Std/State		ILS		STRAIGHT-IN LANDING		LOC (GS out)	
	DA(H)		400'(307')		ALS out		CDFA	
							570'(477')	
							ALS out	
A					R1500m			
B	R1200m		R1400m					
C					R2000m		R2200m	
D								

*ATIS 126.4		*SRI VIJAYA PURAM Approach (R) 123.5		*SRI VIJAYA PURAM Tower 118.1	
LOC IPBR 110.1	Final Apch Crs 037°	D6.4 IPBR 2100' (2007')	ILS DA(H) 400' (307')	Apt Elev 93' Rwy 93'	
MISSED APCH: Climb STRAIGHT AHEAD to 2700', then turn RIGHT to NDB and join holding at 2700', or as directed.					
Alt Set: hPa		Rwy Elev: 3 hPa		Trans level: By ATC	
				Trans alt: 4000'	



RECOMMENDED ALTITUDES	
IPBR DME	ALTITUDE
6.0	1990'
5.0	1670'
4.0	1350'
3.3	1130'
3.0	1030'
2.0	710'



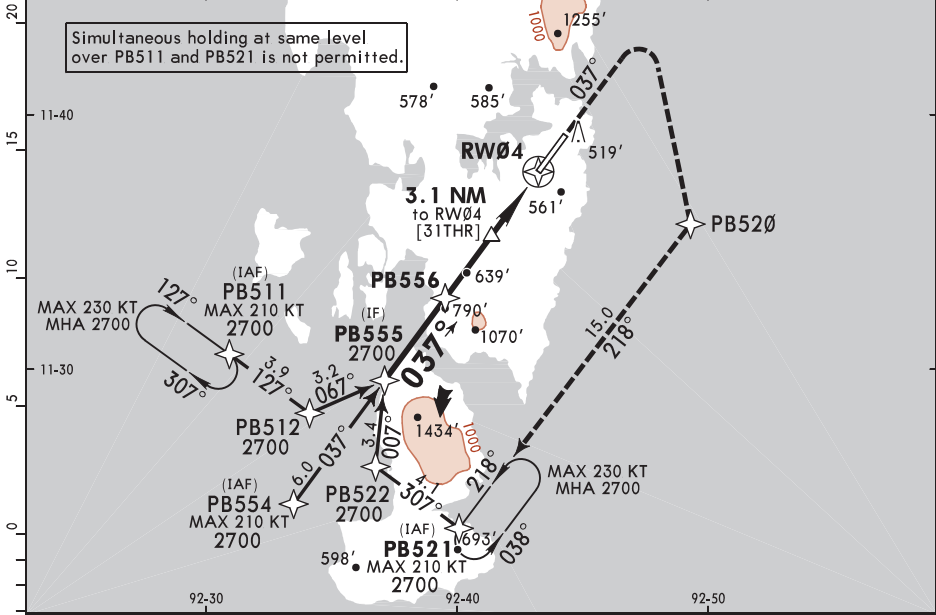
Gnd speed-Kts	70	90	100	120	140	160
ILS GS or LOC Descent Angle	3.00°	372	478	531	637	743
MAP at D1.0 IPBR						

HIALS PAPI-L	2700'	PB 369
	↑	RT

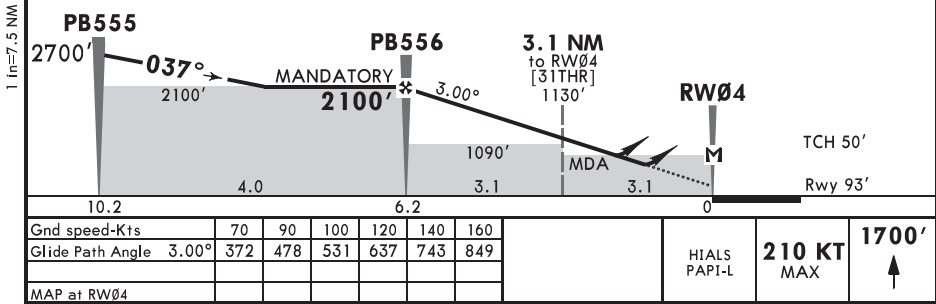
Std/State	ILS		STRAIGHT-IN LANDING		LOC (GS out) CDFA	
	DA(H)	400' (307')	ALS out		MDA(H)	570' (477')
A					R1500m	
B						
C	R1200m		R1400m		R2000m	R2200m
D						

1 VNAV DA(H) in lieu of MDA(H) requires height loss adjustment.

*ATIS 126.4		*SRI VIJAYA PURAM Approach (R) 123.5		*SRI VIJAYA PURAM Tower 118.1	
RNAV	Final Apt Crs 037°	PB556 MANDATORY 2100' (2007')	LNAV/VNAV DA(H) 600' (507')	Apt Elev 93'	2700
MISSED APCH: Climb STRAIGHT AHEAD, passing 1700', climbing turn RIGHT, proceed direct to PB520, proceed to PB521 and join holding at 2700', or as directed. MAX 210 KT				Rwy 93'	
Alt Set: hPa		Rwy Elev: 3 hPa		Trans level: By ATC	
RNP Aptch		Baro-VNAV not authorized below 10°C & above 45°C.		Trans alt: 4000'	
					MSA ARP



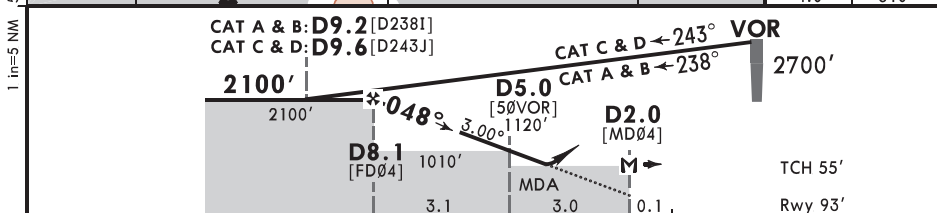
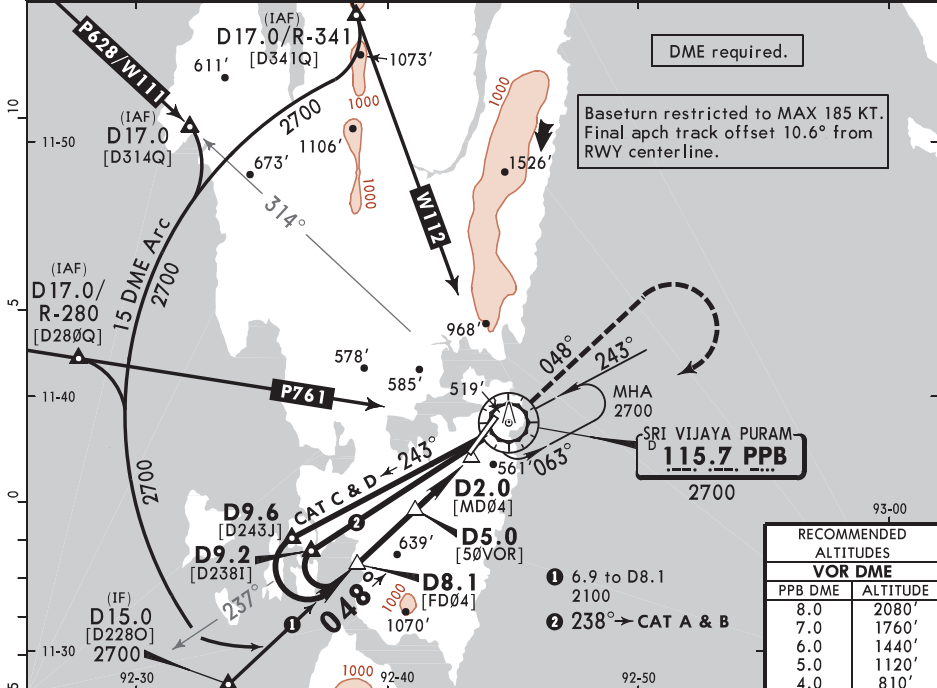
DIST to RW04	6.2	6.0	5.0	4.0	3.1	3.0	2.0
ALTITUDE	2100'	2060'	1740'	1420'	1130'	1100'	780'



Std/State		STRAIGHT-IN LANDING	
LNAV/VNAV DA(H) 600' (507')		LNAV CDFA MDA(H) 670' (577')	
ALS out		ALS out	
A	R1500m		R1500m
B	R1500m		R1500m
C	R2100m	R2400m	R2400m
D	R2100m	R2400m	R2400m

1 VNAV DA(H) in lieu of MDA(H) requires height loss adjustment.
CHANGES: Apt and location name, comms. © JEPPESEN, 2024, 2025. ALL RIGHTS RESERVED.

*ATIS 126.4		*SRI VIJAYA PURAM Approach (R) 123.5		*SRI VIJAYA PURAM Tower 118.1	
VOR PPB 115.7	Final Apch Crs 048°	D8.1 2100' (2007')	MDA(H) (CONDITIONAL) 760' (667')	Apt Elev 93'	2700
MISSED APCH: Climb STRAIGHT AHEAD to 2700', then turn RIGHT to VOR to join holding, or as directed.				Rwy 93'	
Alt Set: hPa		Rwy Elev: 3 hPa	Trans level: By ATC		Trans alt: 4000'
					MSA PPB VOR



Gnd speed-Kts	70	90	100	120	140	160	SALS PAPI-L	2700'	PPB 115.7
Descent Angle 3.00°	372	478	531	637	743	849			
MAP at D2.0								↑	↪ RT

PANS OPS	STRAIGHT-IN LANDING			
	With D5.0 CDFA MDA(H) 760' (667')		W/o D5.0 CDFA MDA(H) 1010' (917')	
	ALS out		ALS out	
	A	R1500m		R1500m
B	R1500m		R1500m	
C	R2900m	R3100m	R4100m	R4300m
D	R2900m	R3100m	R4100m	R4300m