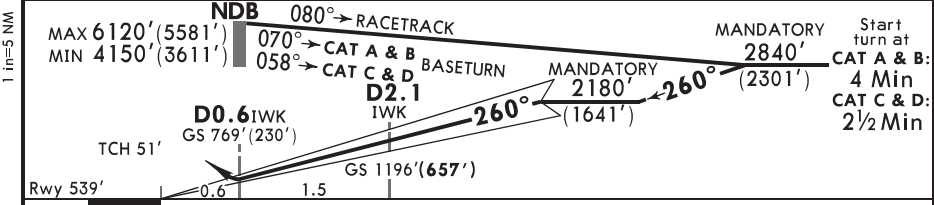
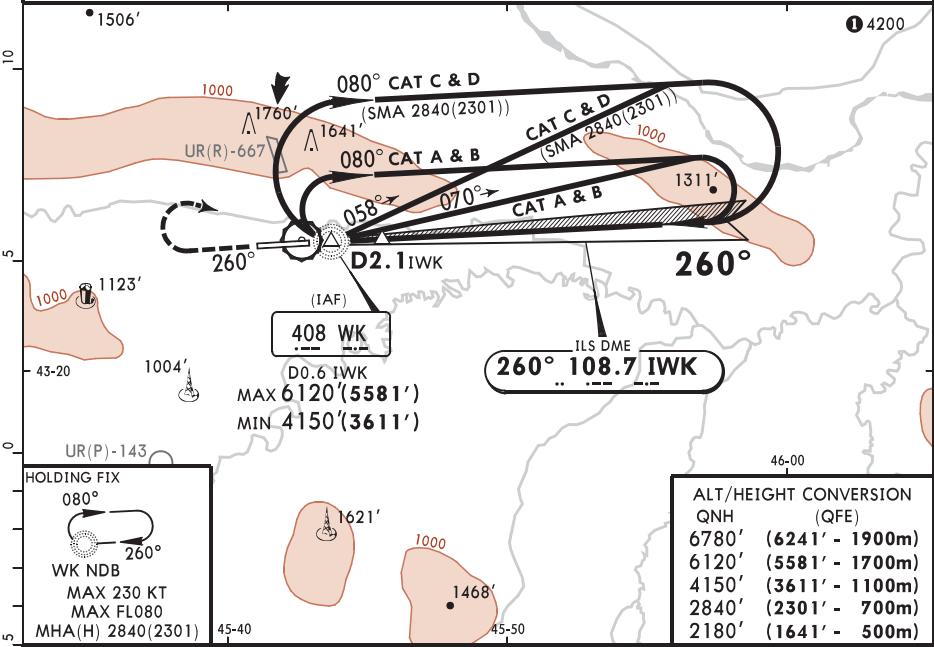


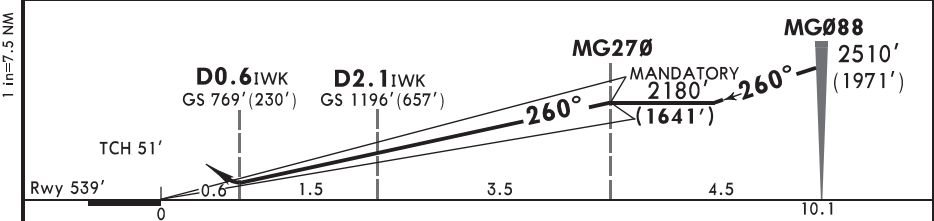
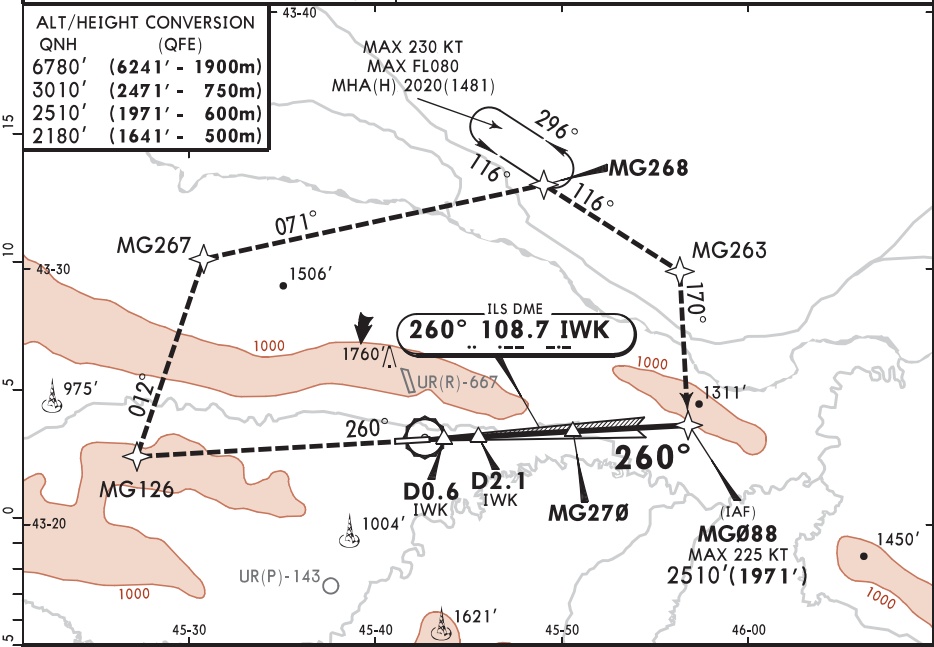
ATIS 127.2			GROZNY Tower 120.2		
LOC IWK 108.7	Final Apch Crs 260°	D2.1 IWK MANDATORY 1196'(657')	ILS DA(H) 739' (200')	Apt Elev 538'	
MISSED APCH: Climb STRAIGHT AHEAD to 2180'(1641') or above, then turn RIGHT to WK NDB climbing to 2840'(2301') or above, or as directed.					
Alt Set: MM (hPa on req)		QNH on req (QFE)	Trans level: FL080	Trans alt: 6780'(6241')	
1. Procedure only available when UR(R)-667 is not active. 2. Procedure restricted to 220 KT.					



Gnd speed-Kts	70	90	100	120	140	160		MIN 2180'(1641') WK 408 RT
GS	2.70°	334	430	478	573	669		

PANS OPS	Std STRAIGHT-IN LANDING		CIRCLE-TO-LAND	
	ILS DA(H) 739' (200')		Prohibited SOUTH of airport	
	ALS out		Max KT	MDA(H)
	A	R550m	100	1320'(782') V1500m
	B		135	1960'(1422') V1600m
C	180		2170'(1632') V2400m	
D	205		2170'(1632') V3600m	
R750m when a Flight Director or Autopilot or HUD to DA is not used.				

ATIS 127.2				GROZNY Tower 120.2	
LOC IWK 108.7	Final Apch Crs 260°	MG270 MANDATORY 2180'(1641')	ILS DA(H) 739'(200')	Apt Elev 538'	8300 MSA ARP
Rwy 539'					
MISSED APCH: Climb STRAIGHT AHEAD to 2510'(1971') or above to MG126, then turn RIGHT to MG267, then to MG268 climbing to 3010'(2471') or above, then proceed to MG263 - MG088 or as directed. MAX 240 KT.					
Alt Set: MM (hPa on req)		QNH on req (QFE)		Trans level: FL080	Trans alt: 6780'(6241')
RNAV 1 for intermediate and missed apch.			GNSS required.		



Gnd speed-Kts	70	90	100	120	140	160	HIALS PAP	240 KT MIN 2510' (1971') MAX	MG126
GS	2.70°	334	430	478	573	669			

PANS OPS	Std STRAIGHT-IN LANDING		CIRCLE-TO-LAND	
	ILS DA(H) 739'(200')		Prohibited SOUTH of airport	
	ALS out		Max KT	MDA(H)
	A	R550m	R1200m	100
B	135			1960'(1422') V1600m
C	180			2170'(1632') V2400m
D	205			2170'(1632') V3600m
R750m when a Flight Director or Autopilot or HUD to DA is not used.				