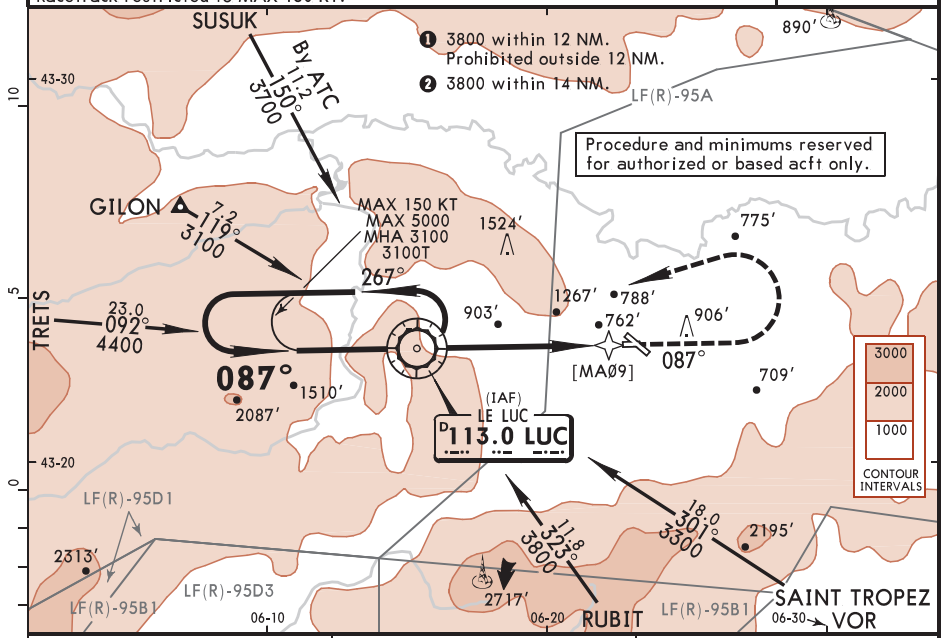
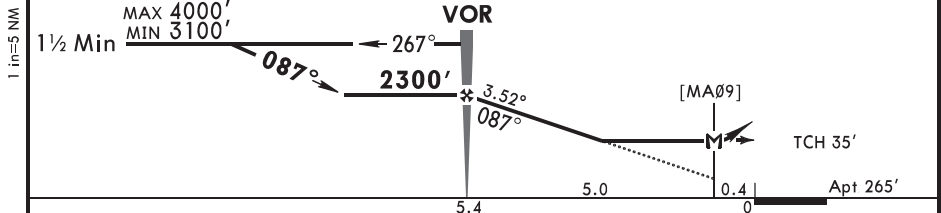


*ATIS 128.650		*LE LUC Approach (R) 122.2		*LE LUC Tower 123.0		*Ground 121.850	
For UHF see MIL-101 listing							
VOR LUC <b>113.0</b>	Final Apch Crs <b>087°</b>	VOR <b>2300'</b> (2035')	MDA(H) <b>1360'</b> (1095')	Apt Elev 265'			
<b>MISSED APCH: Climb on R-087 to 2000', then turn LEFT to VOR climbing to 3100'.</b> Do not turn before passing MAP.							
Alt Set: hPa		Apt Elev: 10 hPa		Trans level: By ATC		Trans alt: 5000'	
Racetrack restricted to MAX 150 KT.							



DIST to MA09	4.0	3.0
ALTITUDE	1930'	1560'



Gnd speed-Kts	70	90	100	120	140	160	REIL	2000'	LUC	3100'	LUC	
Descent Angle	3.52°	436	561	623	748	872		997	↑	on 113.0 R-087	LT	113.0
VOR to MAP	5.0	4:17	3:20	3:00	2:30	2:09		1:53				

Standard STRAIGHT-IN LANDING RWY 09						CIRCLE-TO-LAND					
MDA(H) <b>1360'</b> (1095')						Max KT C O P T E R					
RVR 1200m						MDA(H) VIS					
1360'(1095')						1200m					

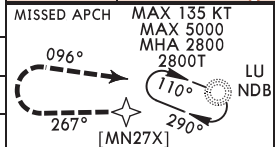
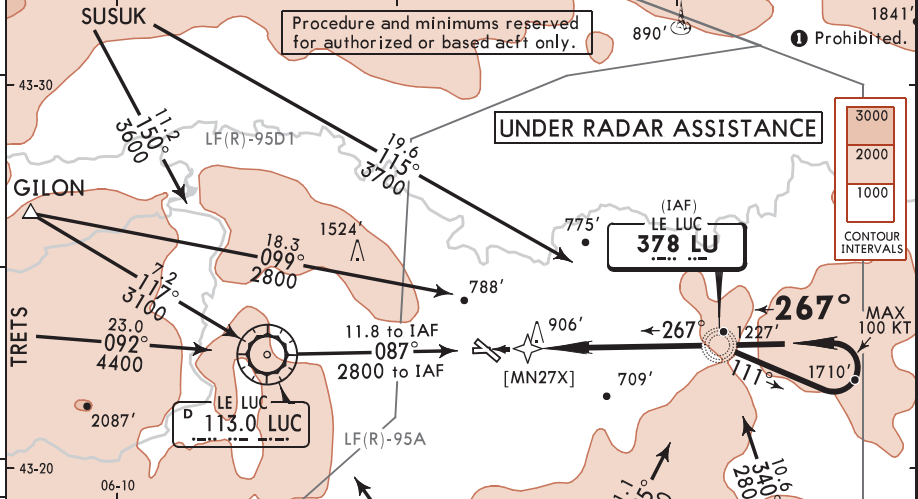
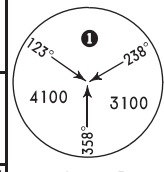
*ATIS 128.650	*LE LUC Approach (R) 122.2	*LE LUC Tower 123.0	*Ground 121.850
------------------	-------------------------------	------------------------	--------------------

For UHF see MIL-101 listing

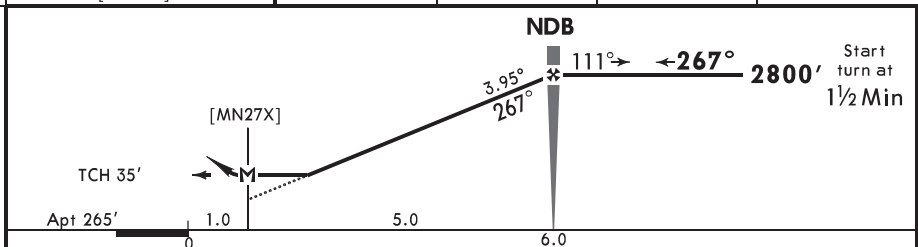
NDB LU <b>378</b>	Final Apch Crs <b>267°</b>	NDB <b>2800'</b> (2535')	MDA(H) <b>1210'</b> (945')	Apt Elev 265'
----------------------	-------------------------------	-----------------------------	-------------------------------	---------------

**MISSED APCH:** Climb on 267° from NDB to 1700', then turn RIGHT to NDB climbing to 2800'. Do not turn before passing MAP.

Alt Set: hPa    Apt Elev: 10 hPa    Trans level: By ATC    Trans alt: 5000'    MSA LU NDB



DIST to MN27X	2.0	3.0	4.0
ALTITUDE	1540'	1960'	2380'



Gnd speed-Kts	70	90	100	120	140	160
Descent Angle	3.95°	489	629	699	839	979
NDB to MAP	5.0	4:17	3:20	3:00	2:30	2:09
					2:09	1:53

REIL	1700'	267° from LU 378	2800'	LU 378
------	-------	------------------	-------	--------

<b>Standard</b> STRAIGHT-IN LANDING RWY 27		CIRCLE-TO-LAND	
MDA(H) <b>1210'</b> (945')		Max KT	MDA(H) VIS
RVR 1200m		1270'(1005') 1200m	