

D-ATIS 134.0	Apt Elev 143
-----------------	-----------------

Alt Set: hPa Trans level: FL110

RNAV 1 required

- ALSOB 1G [ALSO1G]
- DEDEV 1G [DEDEV1G]
- EGNUB 1G [EGNU1G]
- EGNUB 1H [EGNU1H]
- NOVPA 2G [NOVP2G]
- PASAM 1G [PASA1G]
- RNAV (GNSS) ARRIVALS
(RWY 04L/R)

STAR	ROUTING
ALSOB 1G	ALSOB (FL210+) - SH733 (FL190+) - SH730 (FL130+) - SH729 (FL130+) - SH728 (FL120+) - SH713 (FL200-; 8000+).
DEDEV 1G	DEDEV (FL140) - SH735 (FL110) - SH713 (FL200-; 8000+).
EGNUB 1G	EGNUB (9000) - SH761 (5000-; 4000+).
EGNUB 1H	EGNUB (9000) - SH712 (4000).
NOVPA 2G	NOVPA (FL230+) - SH731 (FL230+) - SH730 (FL130+) - SH729 (FL130+) - SH728 (FL120+) - SH713 (FL200-; 8000+).
PASAM 1G	PASAM (FL120) - SH725 (8000-) - SH761 (5000-; 4000+).

LOST COMMS
 Hold at SH713 (ALSOB 1G, DEDEV 1G, NOVPA 2G) or at SH761 (EGNUB 1G, 1H, PASAM 1G) at last assigned level, then follow ICAO provisions.
 LOST COMMS

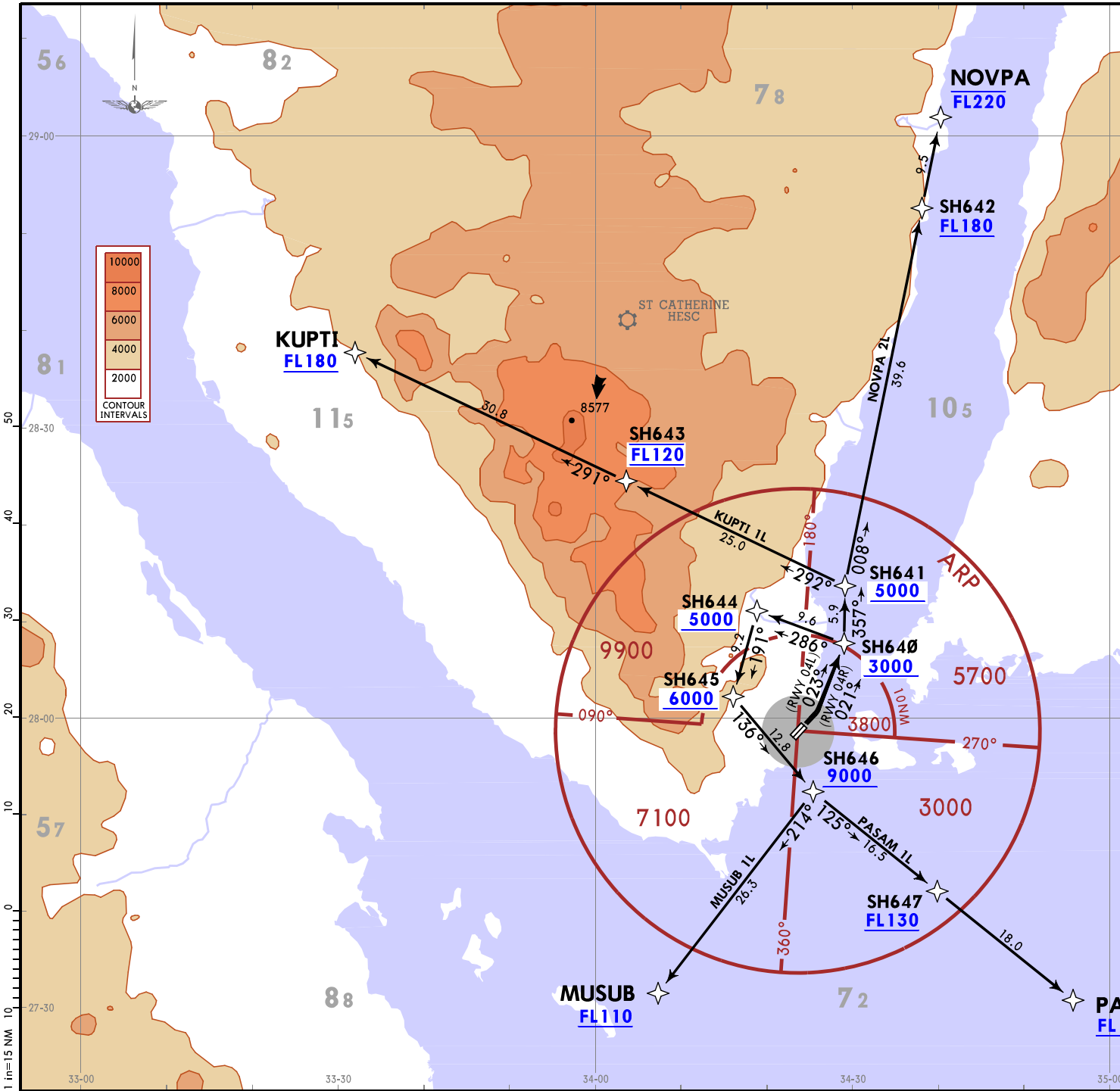
CHANGES: RNAV STAR NOVPA 2G renumbered.

Apt Elev 143	Trans alt: 9500
RNAV 1 required	
SIDs are also minimum noise routings.	
<p>KUPTI 1L [KUPT1L] MUSUB 1L [MUSU1L] NOVPA 2L [NOVP2L] PASAM 1L [PASA1L] RNAV (GNSS) DEPARTURES (RWY 04L/R)</p>	
SID	ROUTING
KUPTI 1L	SH640 (3000+) - SH641 (5000+) - SH643 (FL120) - KUPTI (FL180+).
MUSUB 1L	SH640 (3000+) - SH644 (5000+) - SH645 (6000+) - SH646 (9000+) - MUSUB (FL110+).
NOVPA 2L	SH640 (3000+) - SH641 (5000+) - SH642 (FL180+) - NOVPA (FL220-).
PASAM 1L	SH640 (3000+) - SH644 (5000+) - SH645 (6000+) - SH646 (9000+) - SH647 (FL130+) - PASAM (FL150+).

These SIDs require a minimum climb gradient of 334 per NM (5.5%) up to FL120 for ATC purposes.

Grnd speed-KT	75	100	150	200	250	300
334 per NM	418	557	835	1113	1392	1670

If unable to comply advise ATC before take-off.



CHANGES: RNAV SID NOVPA 2L renumbered.