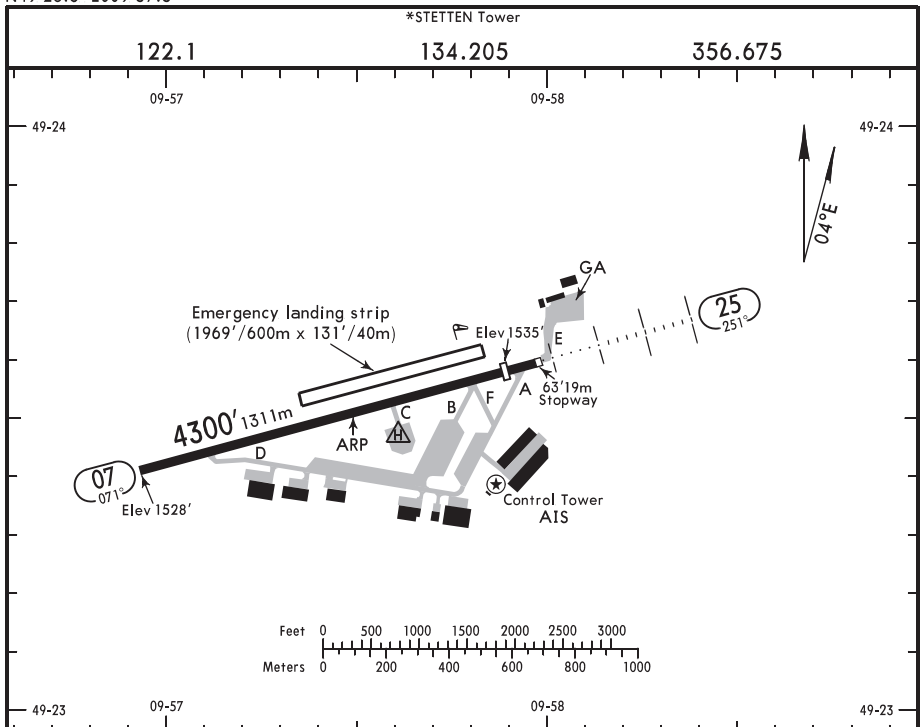


ETHN

Apt Elev 1536'  
N49 23.5 E009 57.5

JEPPESEN NIEDERSTETTEN, GERMANY  
27 DEC 24 (10-9)  
NIEDERSTETTEN



RWY		HIRL PAPI-L (angle 3.0°)		USABLE LENGTHS		TAKE-OFF	WIDTH
				Threshold	Glide Slope		
07							98'
25		HIRL HIALS	SFL PAPI (angle 3.4°)	3969' 1210m	3119' 951m		30m

**LOW VISIBILITY PROCEDURES (LVP)**

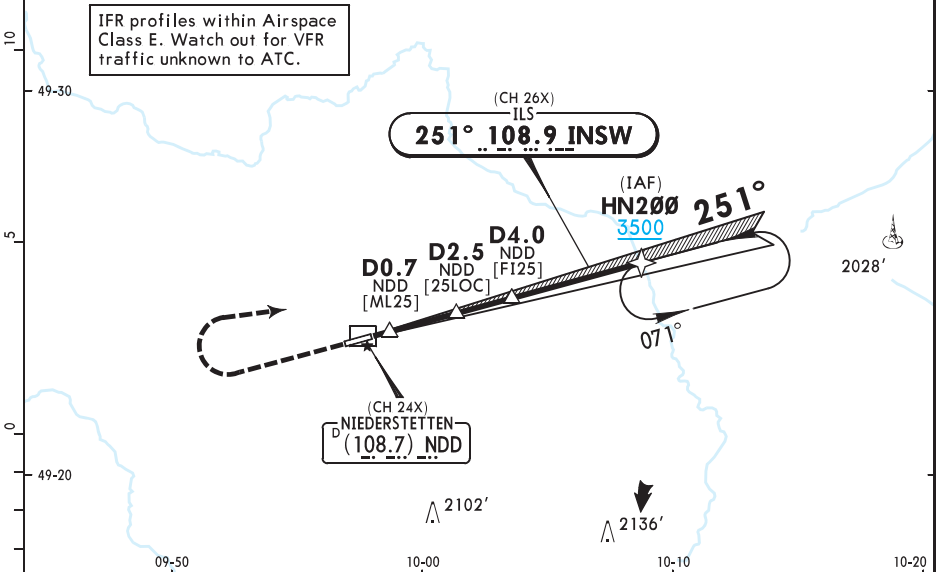
LVP for take-off are established for local military acft and civil acft with PPR only.

Std/State	TAKE-OFF					
A B C D	Low Visibility Procedures required		RCLM or RL	RL	Adequate Vis Ref	
	Approval for Low Visibility Take-off required				DAY	NIGHT
	RCLM & RL & RVR		DAY	NIGHT	DAY	NIGHT
	DAY	NIGHT				
	R300m	R/V400m	R/V500m	NA		
	NOT APPLICABLE					

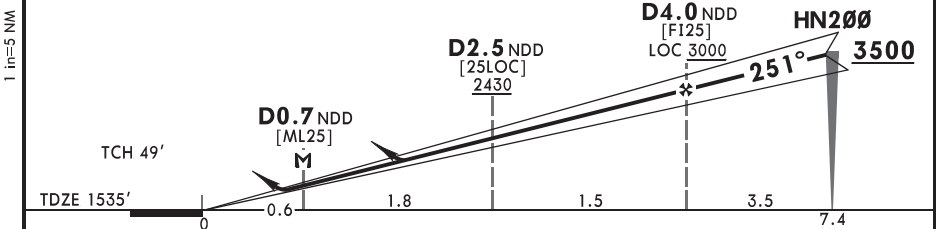
Std/State	COPTER TAKE-OFF			
A B C D	1 Low Visibility Procedure required			No markings (NIGHT)
	1 Approval for Low Visibility Take-off required			
	RL or FATO lights & RCLM & RVR	RL or FATO lights & RCLM	No lights & no markings (DAY)	
	R150m	R200m	2 R250m	
	R150m	R200m	2 R250m	V800m

1 Otherwise: R/V400m  
2 Or rejected take-off distance whichever is the greater.  
CHANGES: None. © JEPPESEN, 2010, 2024. ALL RIGHTS RESERVED.

*LANGEN Radar		*STETTEN Tower			<p>3700 MSA ARP</p>
135.725	398.650	122.1	134.205	356.675	
LOC INSW <b>108.9</b> (CH 26X)	Final Apch Crs <b>251°</b>	D4.0 NDD <b>3000</b> (1465')	ILS DA(H) <b>1735'</b> (200')	Apt Elev 1536' TDZE 1535'	
<b>MISSED APCH: Climb on course 251° to 3500'. When passing 2500', turn RIGHT to HN200.</b>					
Alt Set: hPa (IN on req)		TDZ Elev: 55 hPa	Trans level: By ATC		Trans alt: 5000'
1. DME required. 2. GNSS required. 3. EMERG SAFE ALT 100 NM 6400'. 4. Procedure limited to 160 KT.					



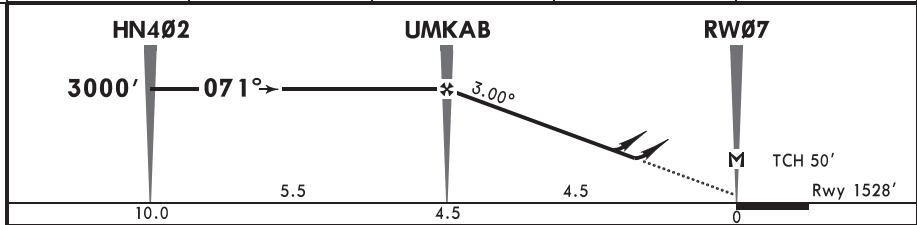
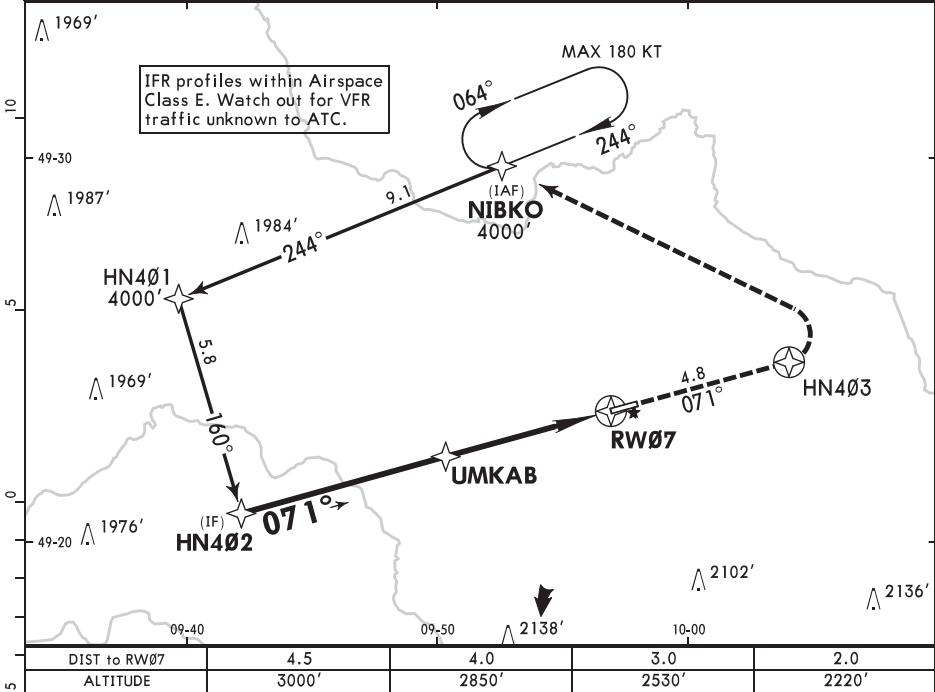
DIST to THR	1.0	2.0	3.0	4.0
ALTITUDE	1950'	2310'	2670'	3000'



Gnd speed-Kts	70	90	100	120	140	160	HIALS PAPI PAPI 	<b>3500</b> on 251°
ILS GS or LOC Descent angle	3.40°	421	541	602	722	842		963
MAP at D0.7 NDD								

<b>Military</b>				STRAIGHT-IN LANDING		CIRCLE-TO-LAND	
ILS		LOC (GS out)					
DA(H) <b>1735'</b> (200')		MDA(H) <b>1930'</b> (395')					
ALS out		ALS out		Max KT		MDA(H)	
A				100	1980' (444') 500' - V2.1km		
B	200' - R750m V0.8km	200' - V1.2km	400' - V1.4km	135	2030' (494') 500' - V2.3km		
C				180	2130' (594') 600' - V2.7km		
D	NOT APPLICABLE		NOT APPLICABLE		D	NOT APPLICABLE	

*LANGEN Radar			*STETTEN Tower		
135.725		314.950		122.1	134.205 356.675
RNAV	Final Apch Crs <b>071°</b>	<b>UMKAB</b> 3000'(1472')	LNAV/VNAV DA(H) Refer to Minimums	Apt Elev 1536' Rwy 1528'	3700  MSA ARP
MISSED APCH: Climb on 071° to HN403, turn LEFT (MAX 220 KT) direct to NIBKO, climb to 4000'.					
Alt Set: hPa (IN on req) Rwy Elev: 55 hPa Trans level: By ATC Trans alt: 5000'					
1. GNSS required. 2. Baro-VNAV not authorized below -30°C.					

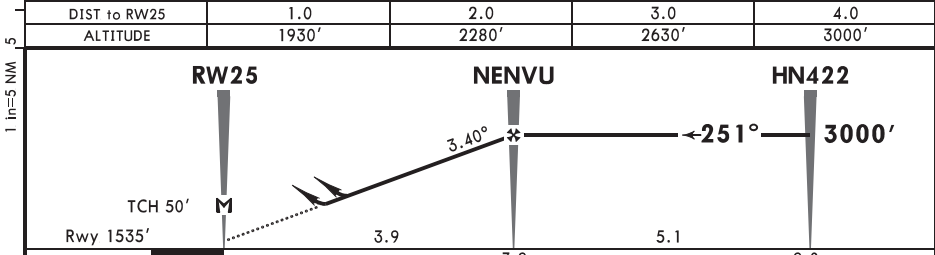
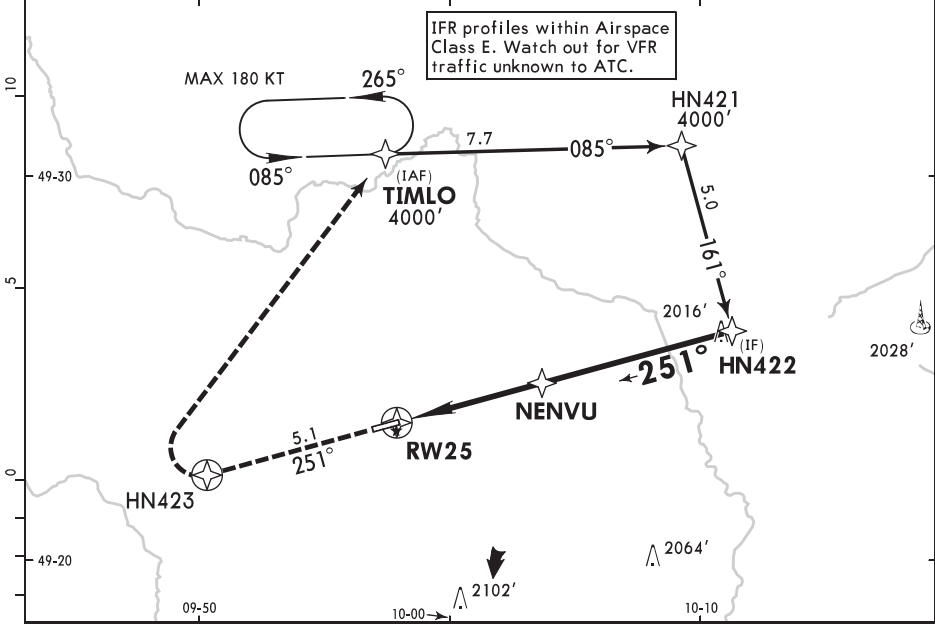


DIST to RW07	4.5	4.0	3.0	2.0
ALTITUDE	3000'	2850'	2530'	2220'

Standard		STRAIGHT-IN LANDING RWY 07		CEILING REQUIRED		CIRCLE-TO-LAND	
LNAV/VNAV DA(H) AB: 1778'(250') C: 1797'(269')		LNAV CDFA DA/MDA(H) 1940'(412')		Max KT		MDA(H) CEIL-VIS	
A		500'-1500m		100	1980'(444')	500'-2100m	
B		500'-1900m		135	2030'(494')	500'-2300m	
C		NOT AUTHORIZED		180	2130'(594')	600'-2700m	
D		NOT AUTHORIZED		D		NOT AUTHORIZED	

PANS OPS

*LANGEN Radar			*STETTEN Tower		
135.725		314.950		122.1	134.205 356.675
RNAV	Final ApcH Crs <b>251°</b>	<b>NEUVU</b> 3000'(1465')	LNAV/VNAV DA(H) Refer to Minimums	Apt Elev 1536'	3700  MSA ARP
<b>MISSED APCH:</b> Climb on 251° to HN423, turn RIGHT (MAX 220 KT) direct to TIMLO, climb to 4000'.					
Alt Set: hPa (IN on req) Rwy Elev: 55 hPa Trans level: By ATC Trans alt: 5000'					
1. GNSS required. 2. CAUTION: Above 20°C the VPA is 3.5° or above. 3. Baro-VNAV not authorized below -30°C.					



Gnd speed-Kts	70	90	100	120	140	160	HIALS PAPI PAPI HN423 on 251°
Descent Angle	3.40°	421	541	602	722	842	
LNAV/VNAV: MAP at DA							
LNAV: MAP at RW25							

Standard		STRAIGHT-IN LANDING RWY 25		CEILING REQUIRED		CIRCLE-TO-LAND	
LNAV/VNAV		LNAV CDFA					
DA(H)		DA/MDA(H)					
A: 1807'(272')		1930'(395')					
B: 1820'(285')							
C: 1843'(308')							
	ALS out		ALS out	Max KT	MDA(H)	CEIL-VIS	
A	300'-900m	300'-1300m	400'-1500m	100	1980'(444')	500'-2100m	
B	300'-1400m	400'-1400m	400'-1800m	135	2030'(494')	500'-2300m	
C	400'-1000m	400'-1400m	400'-1800m	180	2130'(594')	600'-2700m	
D	NOT AUTHORIZED				D	NOT AUTHORIZED	