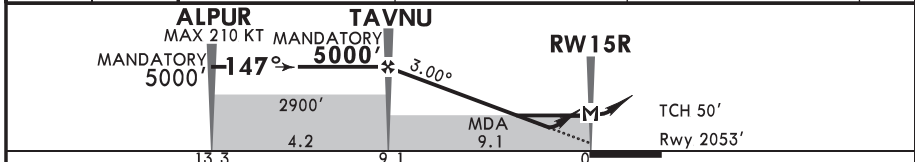
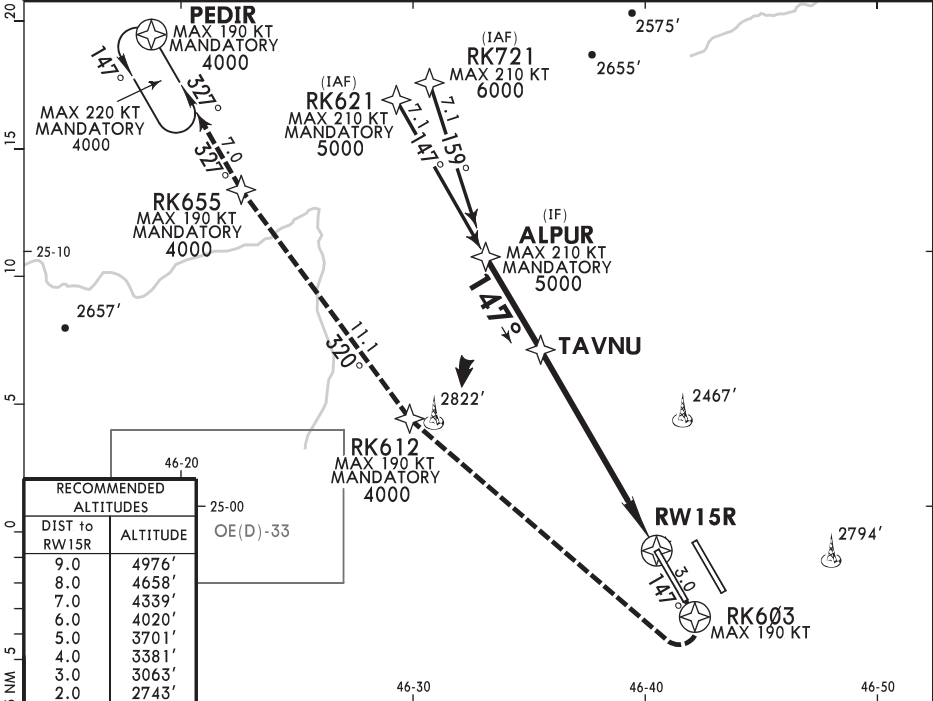


OERK/RUH  
KING KHALED INTL

JEPPESEN  
29 NOV 24 (22-2)

RIYADH, SAUDI ARABIA  
RNP Rwy 15R

D-ATIS	RIYADH Approach (R)	KING KHALED Tower		Ground
127.150	120.0	128.5	119.75	120.6
Final	Final	West	East	
118.8	118.6	118.6		121.6
RNAV	Final Apch Crs <b>147°</b>	TAVNU MANDATORY <b>5000'</b> (2947')	LNAV/VNAV DA(H) Refer to Minimums	Ap <sup>t</sup> Elev 2053' Rwy 2053'
<b>MISSED APCH:</b> Climb on course 147° to RK603, turn RIGHT direct to RK612 at 4000', continue on track 320° to RK655 then on track 327° to PEDIR and hold at 4000' or as instructed by ATC. MAX 190 KT.				
Alt Set: hPa Rwy Elev: 73 hPa Trans level: FL150 Trans alt: 13000'				MSA ARP
RNP Apch	1. For uncompensated Baro-VNAV systems LNAV/VNAV not authorized below 5°C and above 56°C. 2. Circling not authorized.			



Gnd speed-Kts	70	90	100	120	140	160	PAPI	190 KT MAX	RK603 on 147°
Glide Path Angle 3.00°	372	478	531	637	743	849			
MAP at RW15R									
TAVNU to MAP	9.1	7:48	6:04	5:28	4:33	3:54	3:25		

PANS OPS	State		STRAIGHT-IN LANDING		LNAV	
	LNAV/VNAV		ALS out		ALS out	
	A: 2330'(277') C: 2350'(297')				MDA(H) 2590'(537')	
	DA(H) B: 2340'(287') DD: 2360'(307')					
	A	R600m	R1300m			
B	R650m					
C		R1400m		R1700m	R2400m	
D						
Dl	R700m					

CHANGES: Missed Approach text.

© JEPPESEN, 2024. ALL RIGHTS RESERVED.