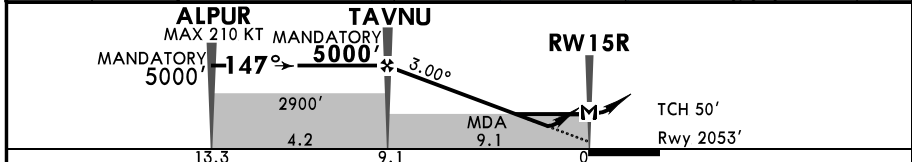
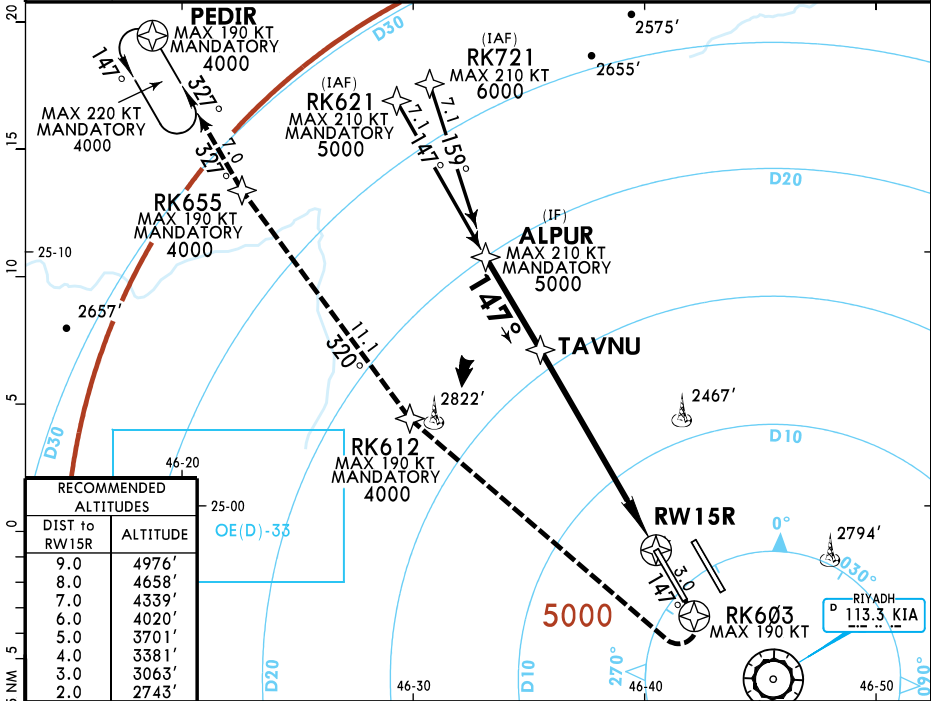




D-ATIS	RIYADH Approach (R) Final				KING KHALED Tower West		East	Ground
127.150	120.0	128.5	119.75	120.6	118.8	118.6	121.6	
RNAV	Final Apch Crs <b>147°</b>	TAVNU MANDATORY <b>5000'</b> (2947')		LNAV/VNAV DA(H) Refer to Minimums	Apt Elev 2053' Rwy 2053'		5000  MSA ARP	
<b>MISSED APCH:</b> Climb on course 147° to RK603, turn RIGHT direct to RK612 at 4000', continue on track 320° to RK655 then on track 327° to PEDIR and hold at 4000' or as instructed by ATC. MAX 190 KT.								
Alt Set: hPa		Rwy Elev: 73 hPa		Trans level: FL150		Trans alt: 13000'		
RNP Apch	1. For uncompensated Baro-VNAV systems LNAV/VNAV not authorized below 5°C and above 56°C. 2. Circling not authorized.							



Gnd speed-Kts	120	140	160	180	ALSF-II	190 KT MAX	RK603 on 147°
Glide Path Angle	3.00°	637	743	849			
MAP at RW15R					PAPI		
TAVNU to MAP	9.1	4:33	3:54	3:25	3:02		

PANS OPS	State		STRAIGHT-IN LANDING		LNAV	
	DA(H) C: 2350'(297')		ALS out		MDA(H) 2590'(537')	
	DDL: 2360'(307')					
	C	R650m				
D		R1400m		R1700m		
D <sub>L</sub>	R700m				R2400m	