



Power Up Your Electronic Flight Bag

A Complete EFB Solution for Mission Success

Military and government flight crews require a specialized EFB program that is equipped with the essentials to fulfill demanding missions, safely and with precision.

Mission-Ready Electronic Flight Bag is the only end-to-end solution for military and government flight squadrons, bringing together the software, hardware, and support you need into one complete package.

With ForeFlight Military Flight Bag at its core, Mission-Ready EFB includes Jeppesen Military Charting Services, Sentry dual-band reception, and mission readiness training coupled with premium support.



“Built-in DD-175-1 support for weather briefings is unbelievably helpful. The fact that it gives you status updates and populates the brief all within the app blew my mind!”

— U.S. Army Chinook Pilot

Plan and Execute with the Most Advanced Military Flight Bag

ForeFlight Military Flight Bag (MFB) brings the power of mission planning and execution into the cockpit with the world's most advanced flight application. As part of Mission-Ready EFB, MFB gives aviators the tools they need for any mission in a user-friendly interface that simplifies planning, briefing, and flying workflows.

Advanced features specifically designed for military include:

- **Emergency Route Abort Altitude for Low Level Corridor:** Easily customize, calculate, and display the Emergency Route Abort Altitude (ERAA) and control point for Low Level Corridor.
- **Avian Hazards:** Get a consolidated view of all available military bird forecasts (NEXRAD, BAM, and SOAR).
- **Enroute Fuel Changes:** Whether you are crossing the ocean or training locally, gain insight into your fuel state across the route and the total fuel required for any journey.
- **Waypoint Range Rings:** Identify restricted operating zones, targets, avoidance areas, and more by marking User Waypoints with up to three customizable range rings.
- **Official DD-175-1 Weather Briefings:** Connect to the USAF Joint Environment Toolkit system to get official DD-175-1 Mission Execution Forecasts automatically attached to your flight plans.
- **Planning with US DOD Obstacles:** Perform official Chart Update Management (CHUM) with the complete and always up-to-date set of over 20 million DoD obstacles worldwide.
- **Time on Target™:** Store a series of to-the-second times on navigation points, and see feedback about the required ground speed to arrive at a specific time.



Stay Connected No Matter Where the Mission

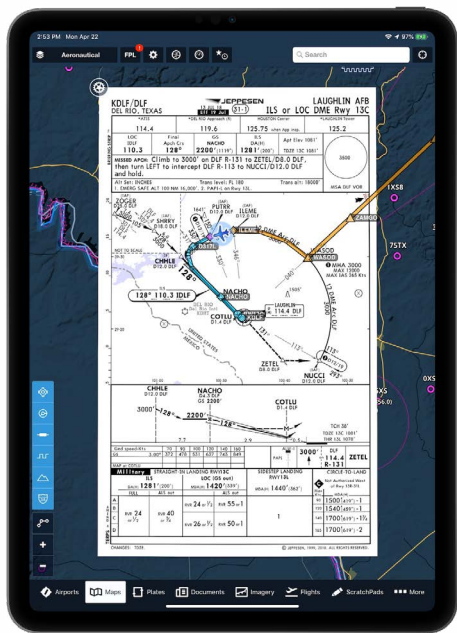
Keep your crews connected in environments with limited or zero connectivity. Operators can download zipped data bundles containing current or future data cycles to a central computer for distribution to pilots' devices through a host of methods, including iTunes, Finder, an SD Card with adapter and more, allowing MFB to operate fully offline for fundamental flight planning and data viewing purposes for up to one year.



Operate Anywhere with the World's Largest Flight Charting Service

You need to be ready to operate anywhere in the world at a moment's notice, which requires the world's most updated and expanded coverage to plan and execute for mission success. Jeppesen Military Charting Service (JMCS) gives military and government operators a global library of enroute charts, IFR and VFR terminal charts, and an array of advanced aeronautical features, all in Jeppesen's universally recognized format, and integrated seamlessly into your Mission-Ready EFB.

With complete military-focused coverage you get access to standard Jeppesen datasets, military airfields, and operational areas worldwide, all in a single solution.



- **Geo-Referenced Procedures:** Get access to Jeppesen terminal, SID and STAR charts, seamlessly integrated into your MFB.
- **Data-Driven VFR and IFR Enroute Charts:** Work with enroute charts that are dynamic, responsive, and customizable.
- **Military Approach Types:** Operate with additional approach categories like TACAN and overlay them directly on the map with map layers for weather, Hazard Advisor, obstacles, traffic, and more.
- **Airway Manual Supplements:** Add an array of airway manuals to give your crews a valuable resource in broader coverage.

Maintain Mission Readiness with Premier Support and Training

A digital solution only works if your crews know how to use it. As part of Mission-Ready EFB digital solution, you receive advanced training and support, tailored to resolve common administrative challenges, and to ensure your team is fully prepared, getting the most out of your investments and enhancing mission success.



Our services include white-glove onboarding, in-person training, self-paced computer-based-training and webinars, and consultation from our experts. You can choose the options that work best for your crews with a Pro or Premium level of service. Training is advanced and customizable with an online dashboard where administrators can track crew progress.

The outcome? More knowledgeable crews, full adoption of your mission software, increased effectiveness in operations, and greater ROI from your digital investments.

Improve Situational Awareness and Safety with Sentry Receiver

Enhancing inflight situational awareness, Mission-Ready EFB includes Sentry, a dual-band ADS-B receiver that gives your crews real-time data on weather and traffic, WAAS GPS, carbon monoxide monitoring and alerting, and other advanced capabilities in a portable package.



Sentry is fully integrated with ForeFlight MFB, creating a powerful pairing of software and hardware. Crews get:

- **Real-Time Weather Data:** Access subscription-free FIS-B weather and data. Display animated regional and CONUS NEXRAD, METARs, TAFs, AIR/SIGMETs, PIREPs, textual winds and temps aloft, TFRs, NOTAMs, and SUA information.
- **Inflight Traffic Alerts:** Receive visual and audio alerts providing the distance, direction, and relative altitude of ADS-B traffic targets.
- **Reliable GPS:** Get support for four GNSS systems (WAAS GPS, Galileo, GLONASS, and BeiDu), and track three constellations concurrently for redundant location tracking.
- **Built-In AHRS for Backup:** See a real-time depiction of your aircraft's pitch and bank.
- **Keep Teams Connected:** With an integrated Wi-Fi network, you can quickly and easily share routes between five devices, enabling extra eyes on traffic and weather.

Ready to Power Up Your Mission?

Get an inside look at the first and only comprehensive EFB program for military and government.



Contact Us to See How it Works for You:

foreflight.com/military/mission-ready-efb

Learn more about Mission-Ready EFB at foreflight.com/military/mission-ready-efb