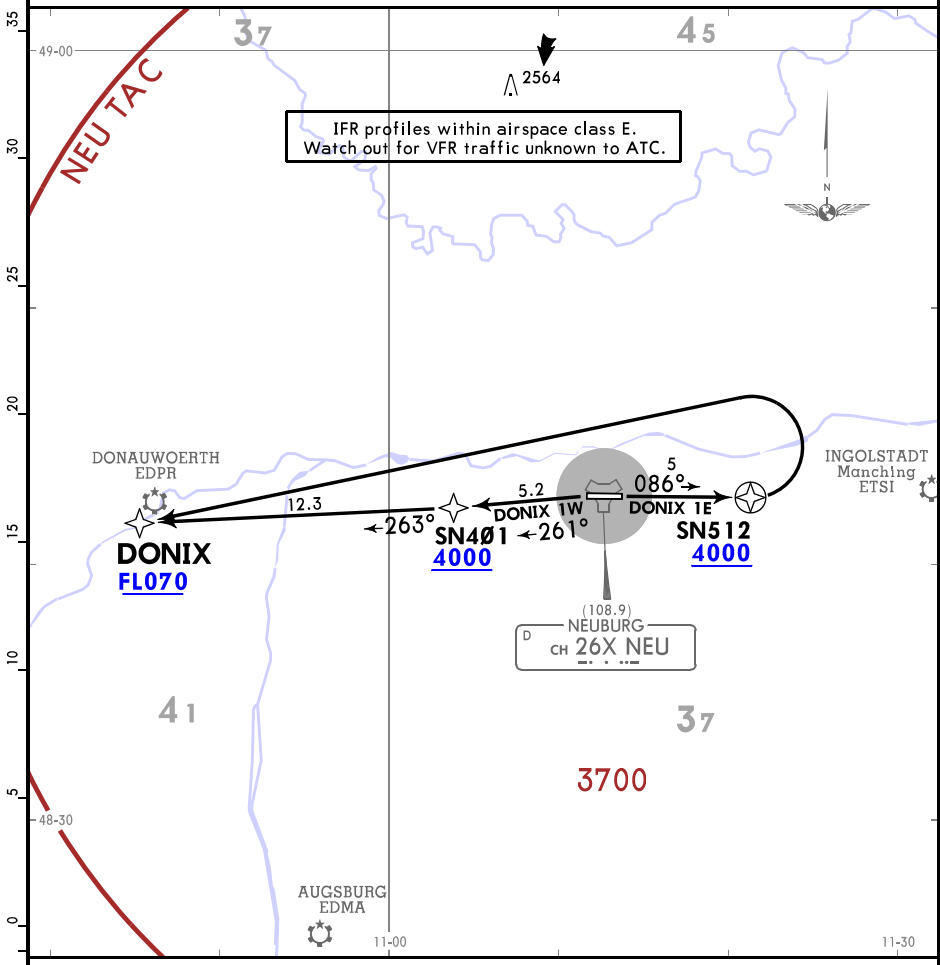


Apt Elev 1249	Trans alt: 5000
	GNSS only
	1. Emergency safe altitude within 100 NM of Neuburg 13,500. 2. Overflights of the town of Neuburg and suburbs below 5000 AGL are prohibited.

**DONIX 1E [DONI1E]
DONIX 1W [DONI1W]
DEPARTURES
(ALL RWYS)**

**SPEED: MAX 250 KT BELOW FL100 OR AS BY ATC
NOT APPLICABLE WITHIN AIRSPACE C**



IFR profiles within airspace class E.
Watch out for VFR traffic unknown to ATC.

WARNING: Close-in obstacles:
DONIX 1E: shelter 0.1 NORTHEAST of DER 1274.
DONIX 1W: trees 0.4 SOUTHWEST of DER 1349.
MINIMUM CLIMB RATE TABLE

- ① DONIX 1E: up to 4000 for ATC purposes.
- ② DONIX 1W: up to 7000 for ATC purposes.

Gnd speed-KT	75	100	150	200	250	300
① V/V (fpm)	678	903	1355	1807	2258	2710
② V/V (fpm)	785	1047	1570	2093	2617	3140

SID	RWY	ROUTING
DONIX 1E	09	Climb on 086° track to SN512, turn LEFT to DONIX, continue climb.
DONIX 1W	27	Climb on 261° track to SN401, 263° track to DONIX.

MIL 1 in=7.5 NM

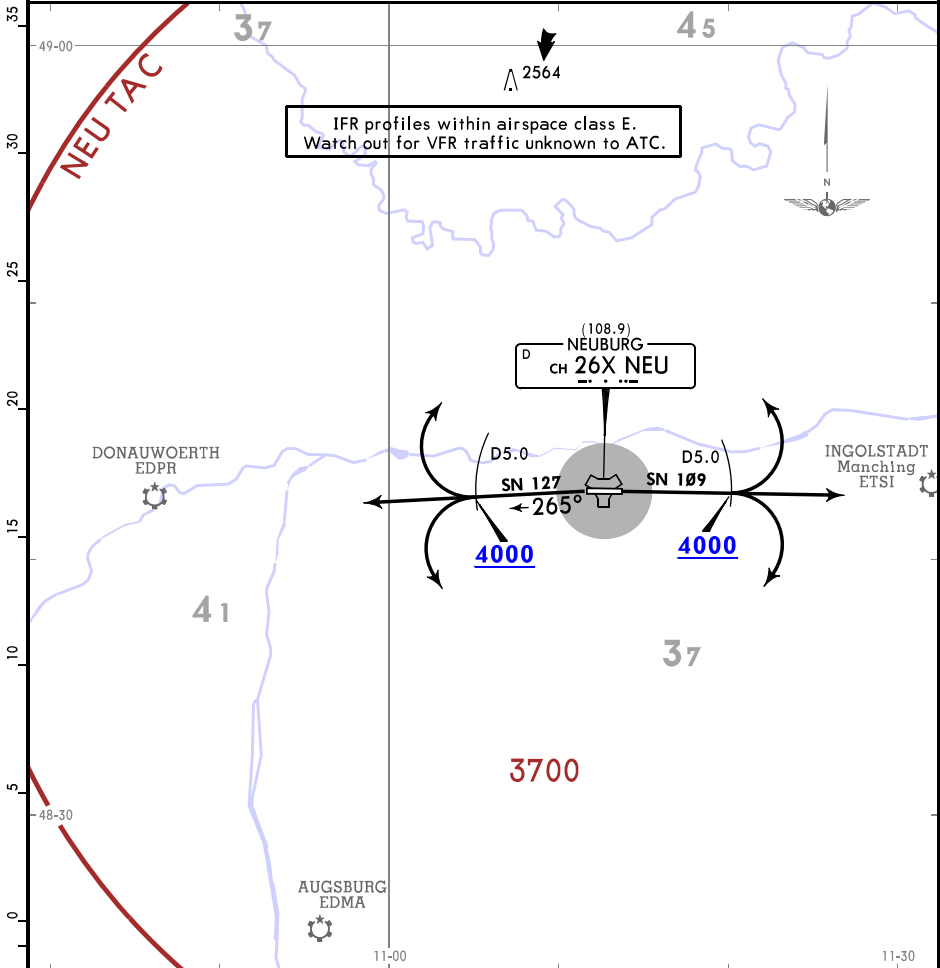
Apt Elev
1249

Trans alt: 5000
1. Emergency safe altitude within 100 NM of Neuburg 13,500.
2. Overflights of the town of Neuburg and suburbs below 5000 AGL are prohibited.

SN 109, SN 127
DEPARTURES
(ALL RWYS)

TACAN AZIMUTH REQUIRED

**SPEED: MAX 250 KT BELOW FL100 OR AS BY ATC
NOT APPLICABLE WITHIN AIRSPACE C**



- MINIMUM CLIMB RATE TABLE**
- 1 SN 109: up to 4000 for ATC purposes.
 - 2 SN 127: up to 4000 for ATC purposes.

Gnd speed-KT	75	100	150	200	250	300
1 V/V (fpm)	798	1063	1595	2127	2658	3190
2 V/V (fpm)	789	1052	1578	2103	2629	3155

RWY 27: No turn before DER.

SID	RWY	ROUTING
SN 109	09	Climb straight ahead to D5.0 NEU, continue as cleared by ATC.
SN 127	27	Climb on 265° track to D5.0 NEU, continue as cleared by ATC.

MIL 1 in=7.5 NM