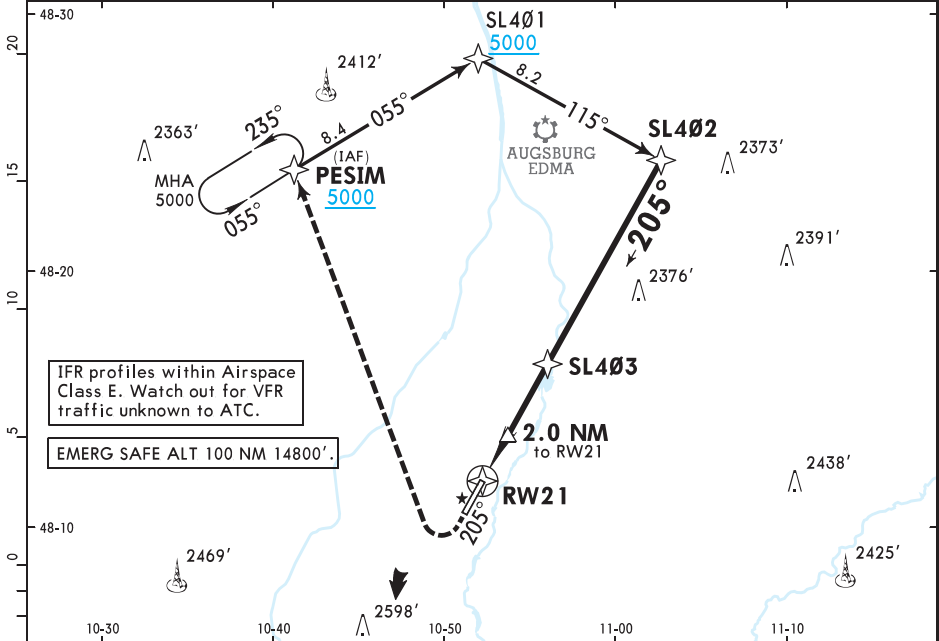
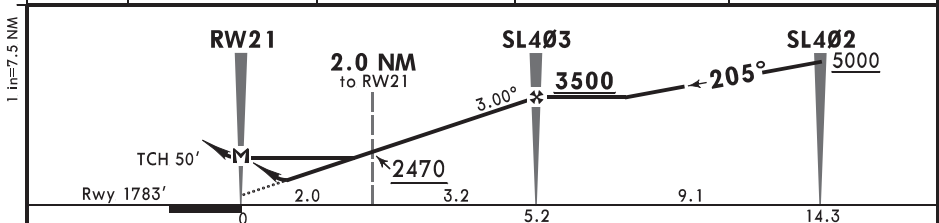


MUNICH Radar			*LECHFELD Tower		
242.2		136.525		363.375 135.155	
RNAV	Final Apch Crs <b>205°</b>	SL403 <b>3500</b> (1717')	LNAV/VNAV DA(H) Refer to Minimums	Apt Elev 1822'	Rwy 1783'
<b>MISSED APCH: Climb on course 205°, when passing 2500' direct to PESIM at 5000' or above.</b>					
Alt Set: hPa (IN on req) Rwy Elev: 64 hPa Trans level: By ATC Trans alt: 5000'					
1. GNSS required. 2. Disregard PAPI. 3. Baro-VNAV not authorized below -30°C.					
					MSA ARP



DIST to RW21	2.0	3.0	3.9	5.2
ALTITUDE	2470'	2790'	3100'	3500'



Gnd speed-Kts	70	90	100	120	140	160		2500 on 205° PESIM
Descent Angle 3.00°	372	478	531	637	743	849		
MAP at RW21								

PANS OPS MIL	<b>Military</b>				STRAIGHT-IN LANDING		CIRCLE-TO-LAND	
	LNAV/VNAV				LNAV		Not authorized West of rwy	
	DA(H) A: 2036' (253') C: 2057' (274') B: 2049' (266') D: 2067' (284')				MDA(H) 2160' (377')			
	ALS out				ALS out		Max KT MDA(H)	
A	300'-R600m V0.8km		300'-V1.3km		400'-V1.5km		100	2290' (468') 500'-V2.2km
B	300'-R650m V0.8km		300'-V1.4km		400'-V1.7km		135	2340' (518') 600'-V2.4km
C							180	2490' (668') 700'-V3.1km
D							D	NOT AUTHORIZED