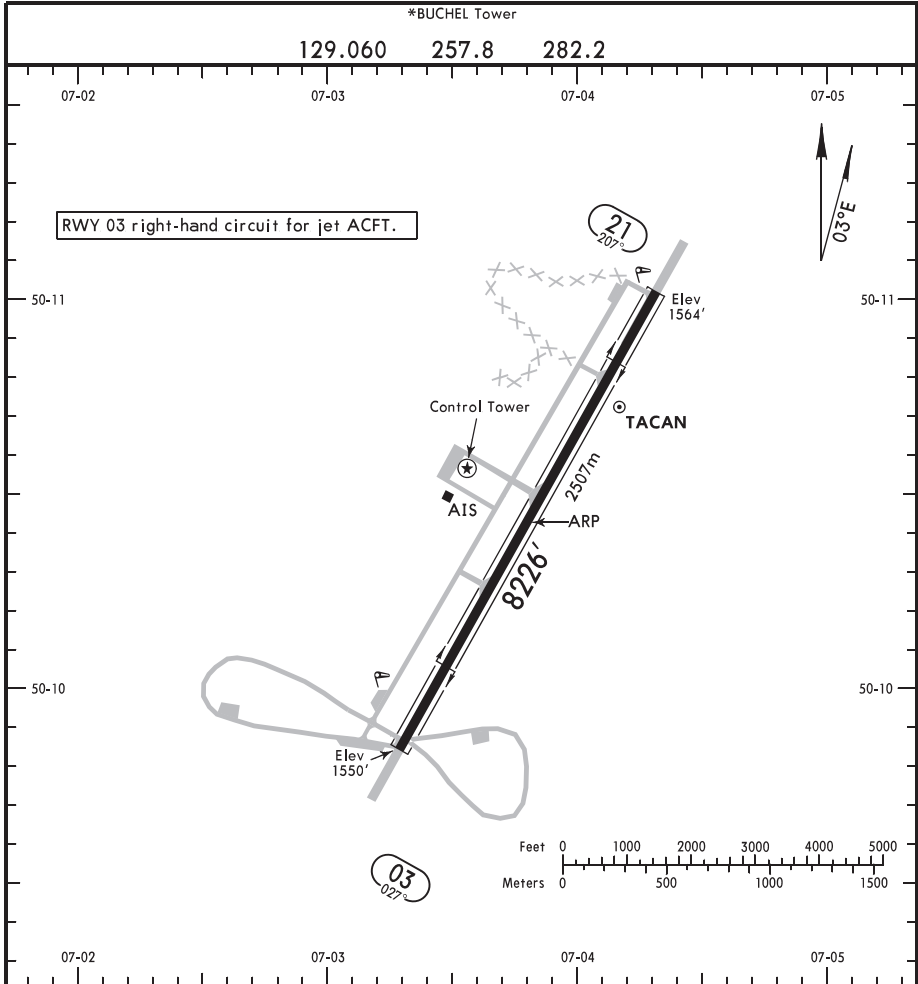


ETSB
 Apt Elev **1568'**
 N50 10.4 E007 03.8

JEPPESEN
 27 DEC 24 (10-9)

BUCHEL, GERMANY
 BUCHEL



ADDITIONAL RUNWAY INFORMATION

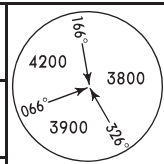
RWY		USABLE LENGTHS			WIDTH
		Threshold	Landing Beyond	Glide Slope	
03 ① 21	HIRL SFL PAPI (angle 3.0°)				148' 45m

① Anti-skid layer.

Std/State		TAKE-OFF			
Low Visibility Take-off		RL or RCLM	RL	Adequate Vis Ref	
RL & RCLM	RL			DAY	NIGHT
DAY		DAY	NIGHT	DAY	NIGHT
R300m		R/V400m		R/V500m	NA

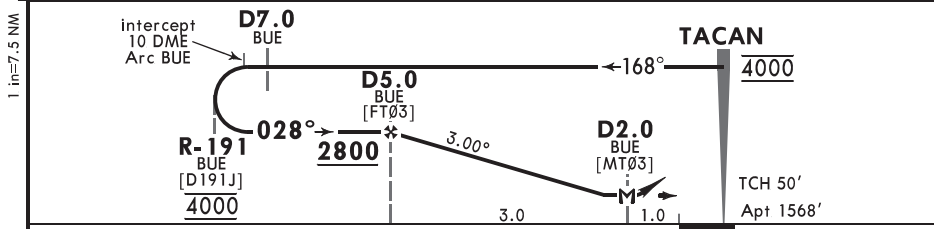
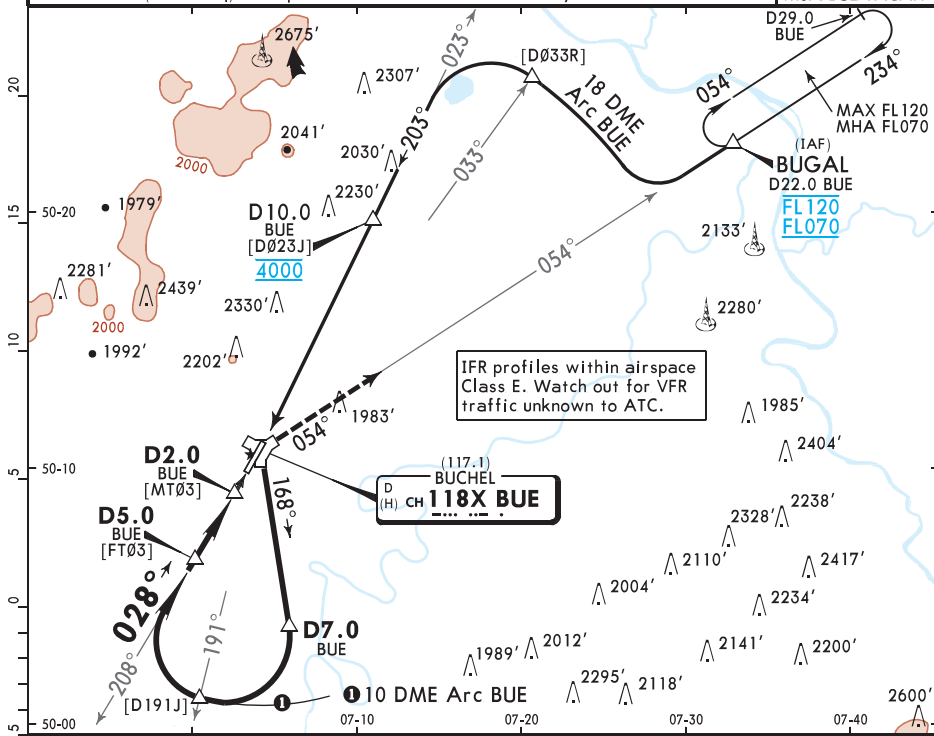
LANGEN Radar (R)		*BUCHEL Radar (R)				*BUCHEL Tower	
125.6	375.7	242.4	344.625	389.225	378.375	129.060	282.2

TACAN BUE CH 118X (117.1)	Final Apch Crs 028°	D5.0 BUE 2800 (1232')	MDA(H) 2170' (602')	Apt Elev 1568'
--	----------------------------------	---------------------------------	-------------------------------	----------------



MISSED APCH: Climbing turn RIGHT (MAX 250 KT) to intercept R-054 BUE TACAN outbound to 4000'. Do not turn before MAP.

Alt Set: hPa (IN on req) Apt Elev: 56 hPa Trans level: By ATC Trans alt: 5000' MSA BUE TACAN

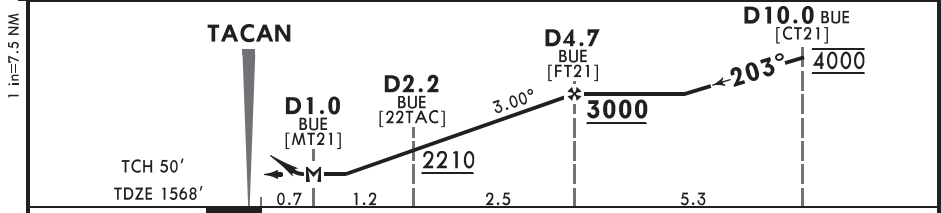
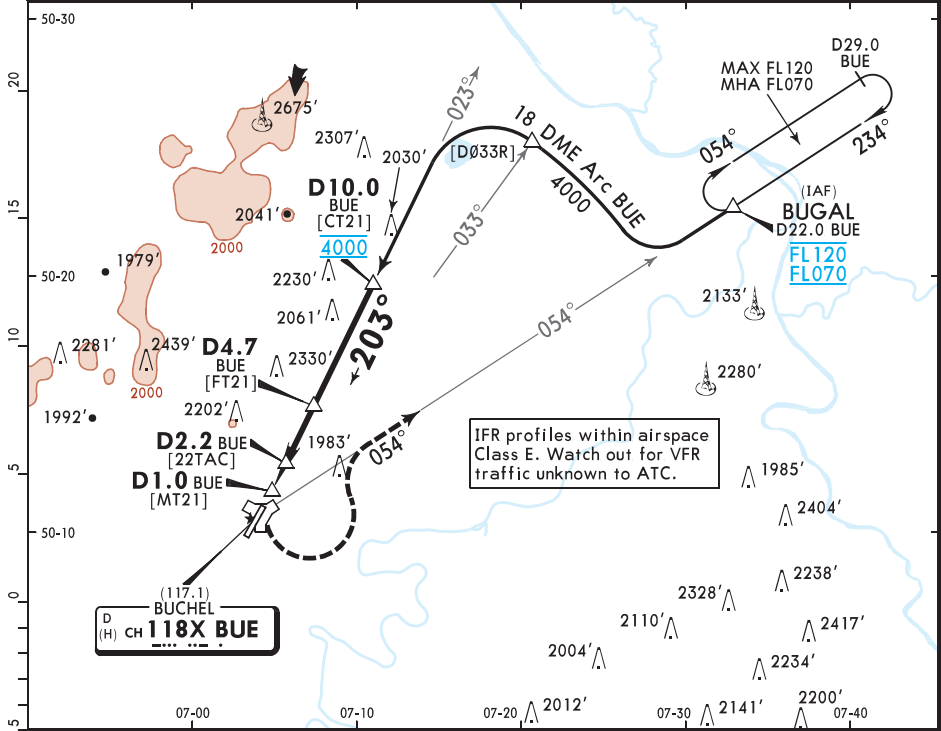


Gnd speed-Kts	70	90	100	120	140	160	PAPI	250 KT max	BUE CH 118X (117.1)	4000'
Descent Angle 3.00°	372	478	531	637	743	849				
MAP at D2.0 BUE									R-054	↑

Military STRAIGHT-IN LANDING
MDA(H) **2170'** (602')

A	700'. V2.7km
B	
C	
D	
E	

LANGEN Radar (R)		*BUCHEL Radar (R)				*BUCHEL Tower	
125.6	375.7	242.4	344.625	389.225	378.375	129.060	282.2
TACAN BUE CH 118X (117.1)	Final Apch Crs 203°	D4.7 BUE 3000 (1432')	MDA(H) 2170' (602')	Apt Elev 1568'		TDZE 1568'	
MISSED APCH: Climbing turn LEFT (MAX 250 KT) to intercept R-054 BUE TACAN outbound to 4000'. Do not turn before MAP.							
Alt Set: hPa (IN on req)		TDZ Elev: 56 hPa	Trans level: By ATC	Trans alt: 5000'	MSA BUE TACAN		



Gnd speed-Kts	70	90	100	120	140	160	PAPI	250 KT max on CH 118X LT R-054	4000'
Descent Angle 3.00°	372	478	531	637	743	849			
MAP at D1.0 BUE									

Military STRAIGHT-IN LANDING
MDA(H) **2170'** (602')

A	PANS OPS MIT 700'.V2.7km
B	
C	
D	
E	