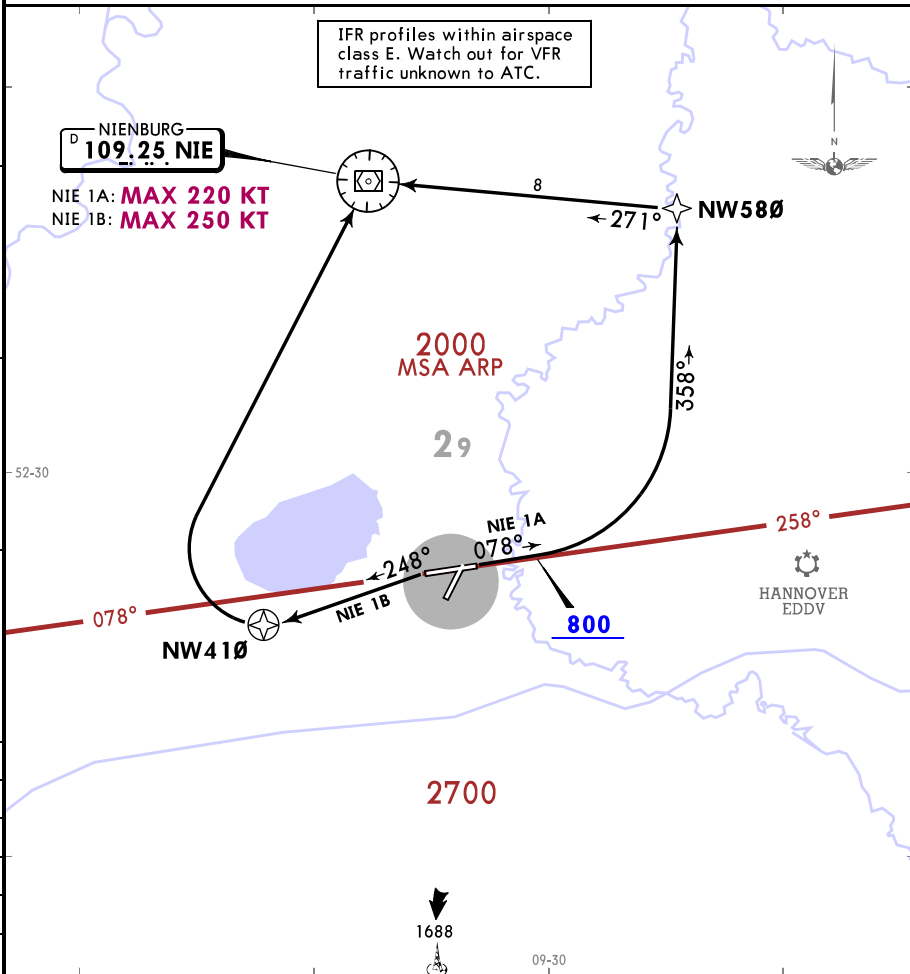


Apt Elev 187	Trans alt: 5000
	RNAV 1 GNSS required DME/DME not authorized
	<ol style="list-style-type: none"> Emergency Safe Altitude within 100 NM of Wunstorf 6100. SIDs are also noise abatement procedures. Strict adherence within the limits of aircraft performance is MANDATORY. Avoid overflying of hospital Neustadt. Avoid overflying populated areas as far as possible. CAUTION: Close-in obstacles: Antenna 137 M behind end of RWY 08 121 M SOUTH of centerline, 211.

NIE 1A, NIE 1B
RNAV DEPARTURES
(RWYS 08, 26)

**SPEED: MAX 250 KT BELOW FL100 OR AS BY ATC
NOT APPLICABLE WITHIN AIRSPACE C**

IFR profiles within airspace
class E. Watch out for VFR
traffic unknown to ATC.



Initial climb clearance 4000

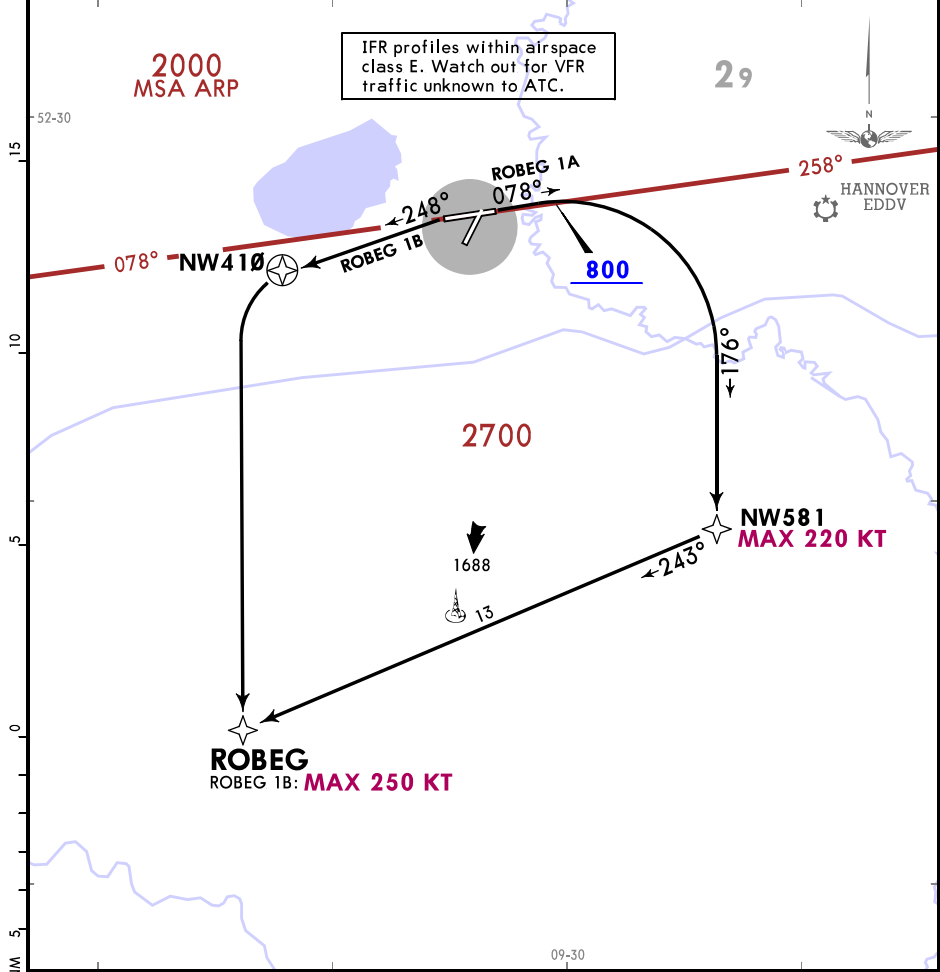
SID	RWY	ROUTING
NIE 1A	08	Climb on 078° track to at or above 800, 358° track to NW580, to NIE.
NIE 1B	26	On 248° track to NW410, direct to NIE.

MIL 1 in=5 NMA

Apt Elev 187	Trans alt: 5000
	RNAV 1. GNSS required. DME/DME not authorized.
	<ol style="list-style-type: none"> 1. Emergency Safe Altitude within 100 NM of Wunstorf 6100. 2. SIDs are also noise abatement procedures. Strict adherence within the limits of aircraft performance is MANDATORY.. 3. Avoid overflying of hospital Neustadt. 4. Avoid overflying populated areas as far as possible. 5. CAUTION: Close-in obstacles: Antenna 137 M behind end of RWY 08 121 M SOUTH of centerline, 211.

ROBEG 1A [ROBE1A], ROBEG 1B [ROBE1B]
RNAV DEPARTURES
(RWYS 08, 26)

SPEED: MAX 250 KT BELOW FL100 OR AS BY ATC
NOT APPLICABLE WITHIN AIRSPACE C



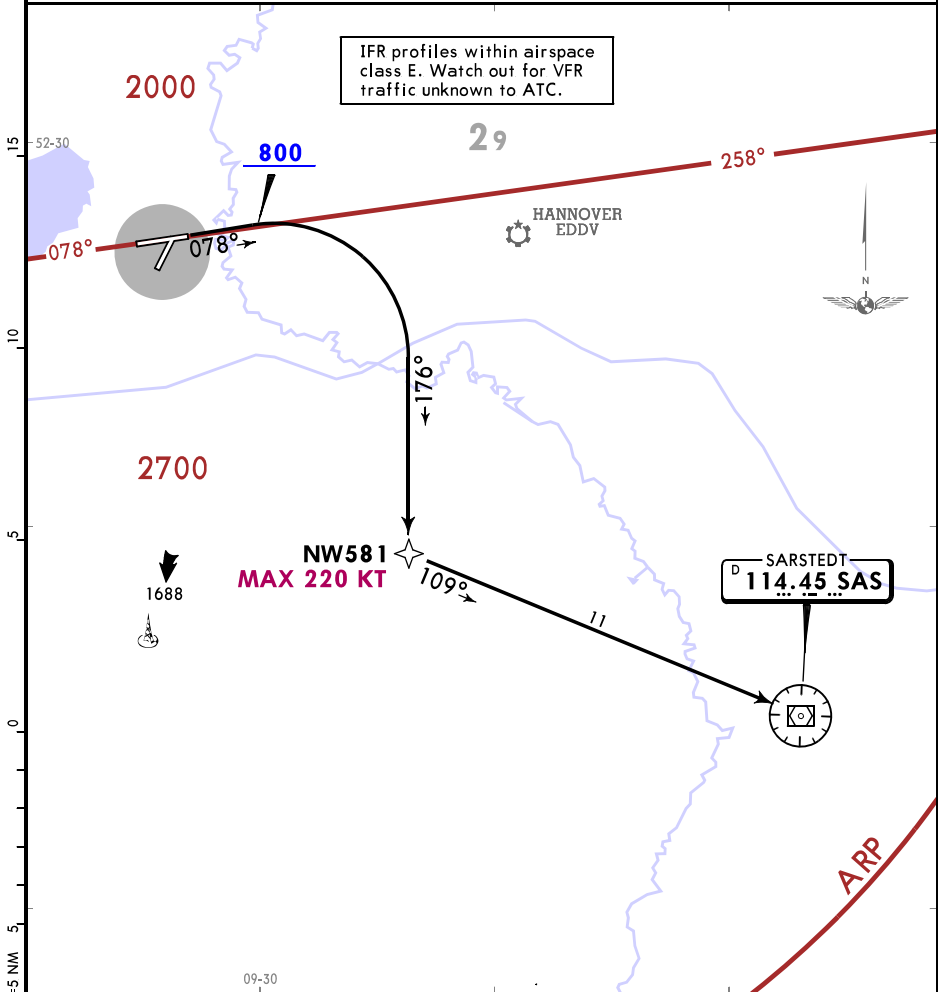
SID	RWY	ROUTING
ROBEG 1A	08	Climb on 078° track to at or above 800, 176° track to NW581, to ROBEG.
ROBEG 1B	26	On 248° track to NW410, direct to ROBEG.

Apt Elev 187	Trans alt: 5000
	RNAV 1. GNSS required. DME/DME not authorized.
	<ol style="list-style-type: none"> 1. Emergency Safe Altitude within 100 NM of Wunstorf 6100. 2. SIDs are also noise abatement procedures. Strict adherence within the limits of aircraft performance is MANDATORY. 3. Avoid overflying of hospital Neustadt. 4. Avoid overflying populated areas as far as possible. 5. CAUTION: Close-in obstacles: Antenna 137 M behind end of RWY 08 121 M SOUTH of centerline, 211.

SAS 1A
RNAV DEPARTURE
(RWY 08)

SPEED: MAX 220 KT UNTIL PASSING NW581
SPEED: MAX 250 KT BELOW FL100 OR AS BY ATC
NOT APPLICABLE WITHIN AIRSPACE C

IFR profiles within airspace class E. Watch out for VFR traffic unknown to ATC.



Initial climb clearance 4000

ROUTING

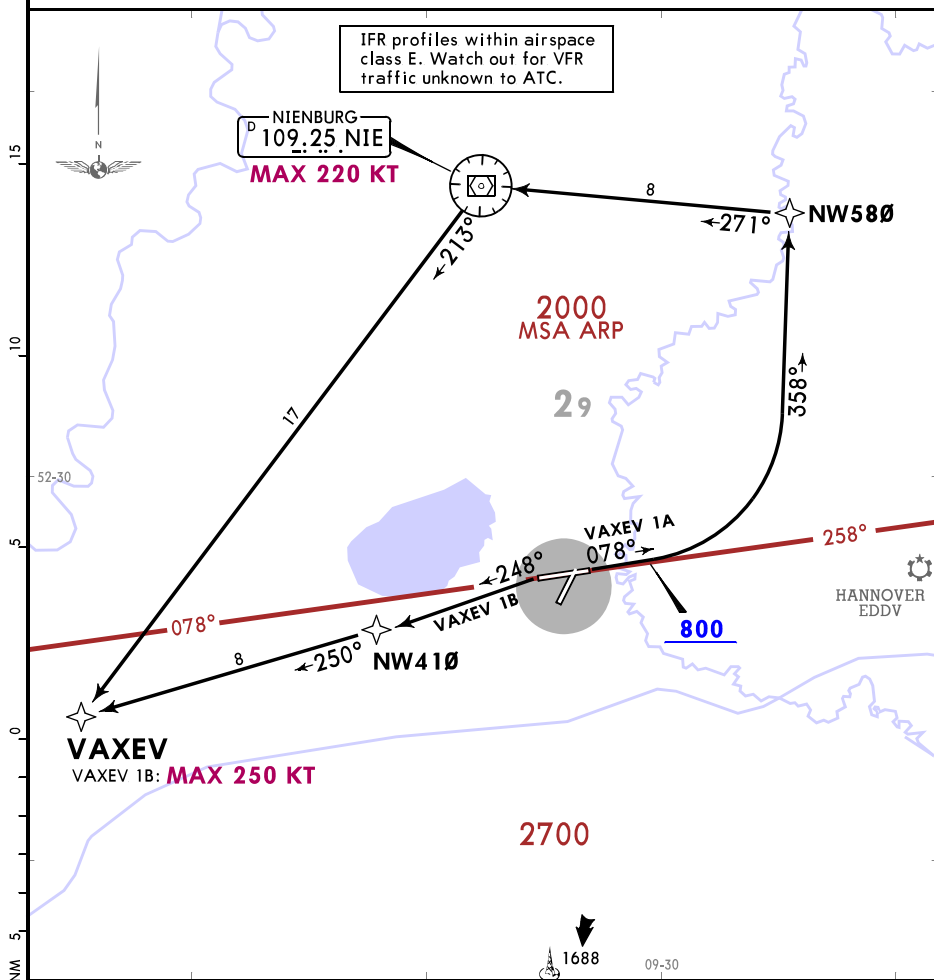
Climb on 078° track to at or above 800, 176° track to NW581, to SAS.

MIL 1 in=5 NM

Apt Elev 187	Trans alt: 5000
	RNAV 1 GNSS required DME/DME not authorized
	<ol style="list-style-type: none"> 1. Emergency Safe Altitude within 100 NM of Wunstorf 6100. 2. SIDs are also noise abatement procedures. Strict adherence within the limits of aircraft performance is MANDATORY. 3. Avoid overflying of hospital Neustadt. 4. Avoid overflying populated areas as far as possible. 5. CAUTION: Close-in obstacles: Antenna 137 M behind end of RWY 08 121 M SOUTH of centerline, 211.

VAXEV 1A [VAXE1A], VAXEV 1B [VAXE1B]
RNAV DEPARTURES
(RWYS 08, 26)

**SPEED: MAX 250 KT BELOW FL100 OR AS BY ATC
NOT APPLICABLE WITHIN AIRSPACE C**



IFR profiles within airspace class E. Watch out for VFR traffic unknown to ATC.

NIE
109.25 NIE
MAX 220 KT

VAXEV
VAXEV 1B: MAX 250 KT

Initial climb clearance 4000

SID	RWY	ROUTING
VAXEV 1A	08	Climb on 078° track to at or above 800, 358° track to NW580, to NIE, to VAXEV.
VAXEV 1B	26	On 248° track to NW410, to VAXEV.

Apt Elev 187
 Trans alt: 5000
 1. Emergency Safe Altitude within 100 NM of Wunstorf 6100.
 2. SIDs are also noise abatement procedures. Strict adherence within the limits of aircraft performance is MANDATORY.
 3. Avoid overflying of hospital Neustadt.
 4. Avoid overflying populated areas as far as possible.

NW 102

CAT A & B

NW 120

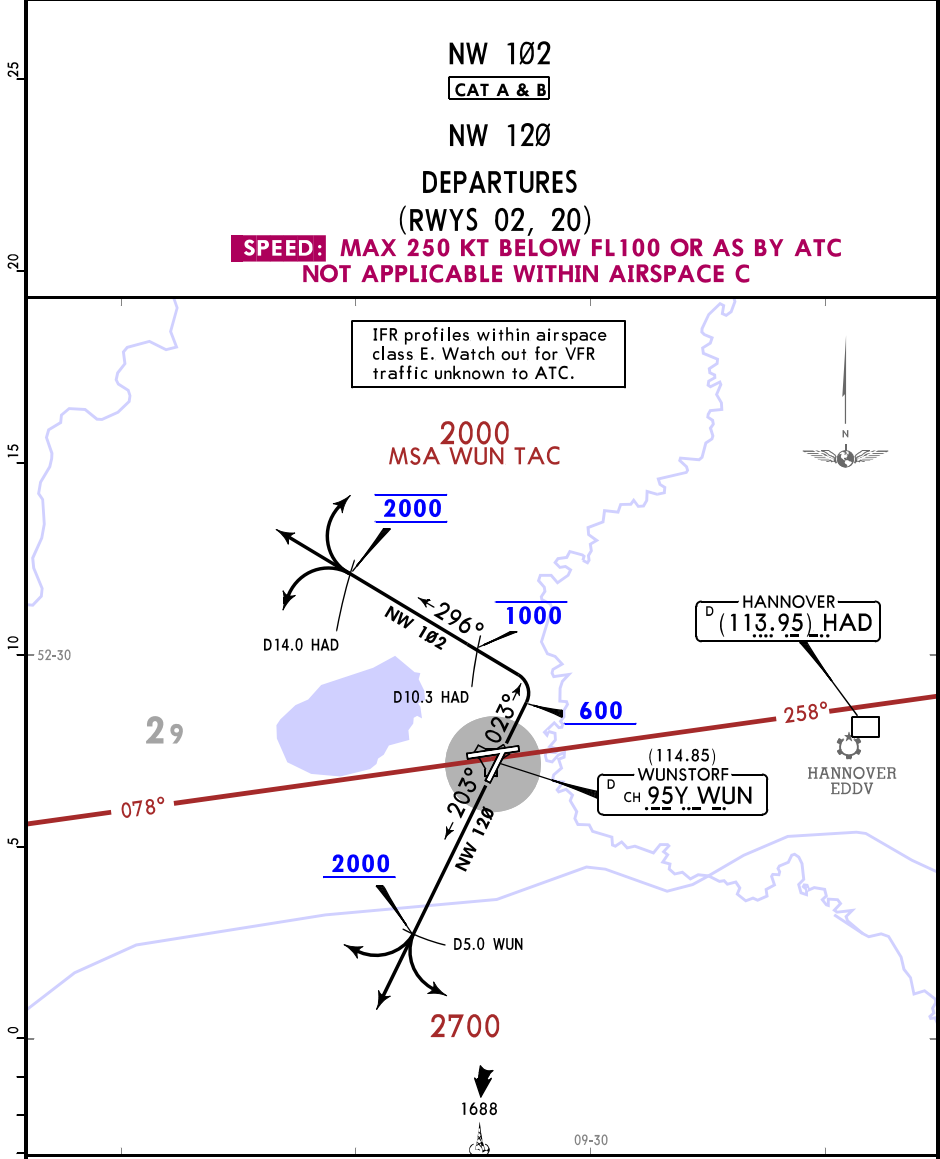
DEPARTURES

(RWYS 02, 20)

**SPEED: MAX 250 KT BELOW FL100 OR AS BY ATC
 NOT APPLICABLE WITHIN AIRSPACE C**

IFR profiles within airspace class E. Watch out for VFR traffic unknown to ATC.

2000
MSA WUN TAC



MINIMUM CLIMB RATE TABLE FOR ATC PURPOSES

- 1 NW 102: 1000 to 2000.
- 2 NW 120: up to 2000.

Gnd speed-KT	75	100	150	200	250	300
1 V/V (fpm)	327	437	655	873	1092	1310
2 V/V (fpm)	509	678	1017	1357	1696	2035

RWY 02: Departure turn MAX 150 KT.

SID	RWY	ROUTING
NW 102	02	Climb on 023° track, when passing 600 turn LEFT, 296° track, continue as cleared by ATC.
NW 120	20	Climb on 203° track to D5.0 WUN, continue as cleared by ATC.

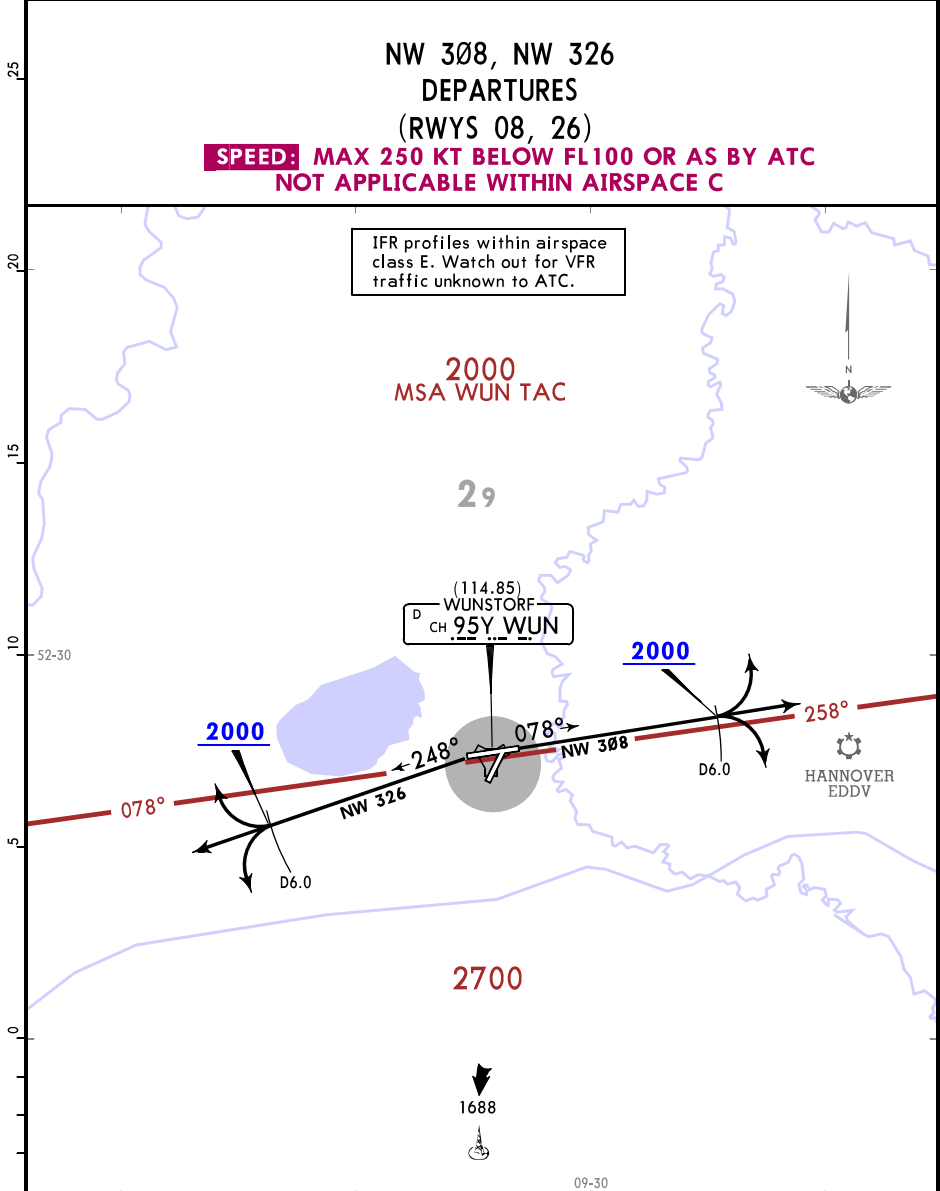
MIL 1 in=5 NM

Apt Elev 187
 Trans alt: 5000
 1. Emergency Safe Altitude within 100 NM of Wunstorf 6100.
 2. SIDs are also noise abatement procedures. Strict adherence within the limits of aircraft performance is MANDATORY.
 3. Avoid overflying of hospital Neustadt.
 4. Avoid overflying populated areas as far as possible.

NW 308, NW 326
 DEPARTURES
 (RWYS 08, 26)

**SPEED: MAX 250 KT BELOW FL100 OR AS BY ATC
 NOT APPLICABLE WITHIN AIRSPACE C**

IFR profiles within airspace class E. Watch out for VFR traffic unknown to ATC.



CAUTION: RWY 08: Close-in obstacles
 Trees 215 M NORTHEAST of DER, 237.

MINIMUM CLIMB RATE TABLE

① NW 308, ② NW 326: up to 2000.

Gnd speed-KT	75	100	150	200	250	300
① V/V (fpm)	425	567	850	1133	1417	1700
② V/V (fpm)	418	557	835	1113	1392	1670

SID	RWY	ROUTING
NW 308	08	Climb on 078° track to 2000 within D6.0 WUN, continue as cleared by ATC.
NW 326	26	Climb on 248° track to 2000 within D6.0 WUN, continue as cleared by ATC.

MIL 1 in=5 NM