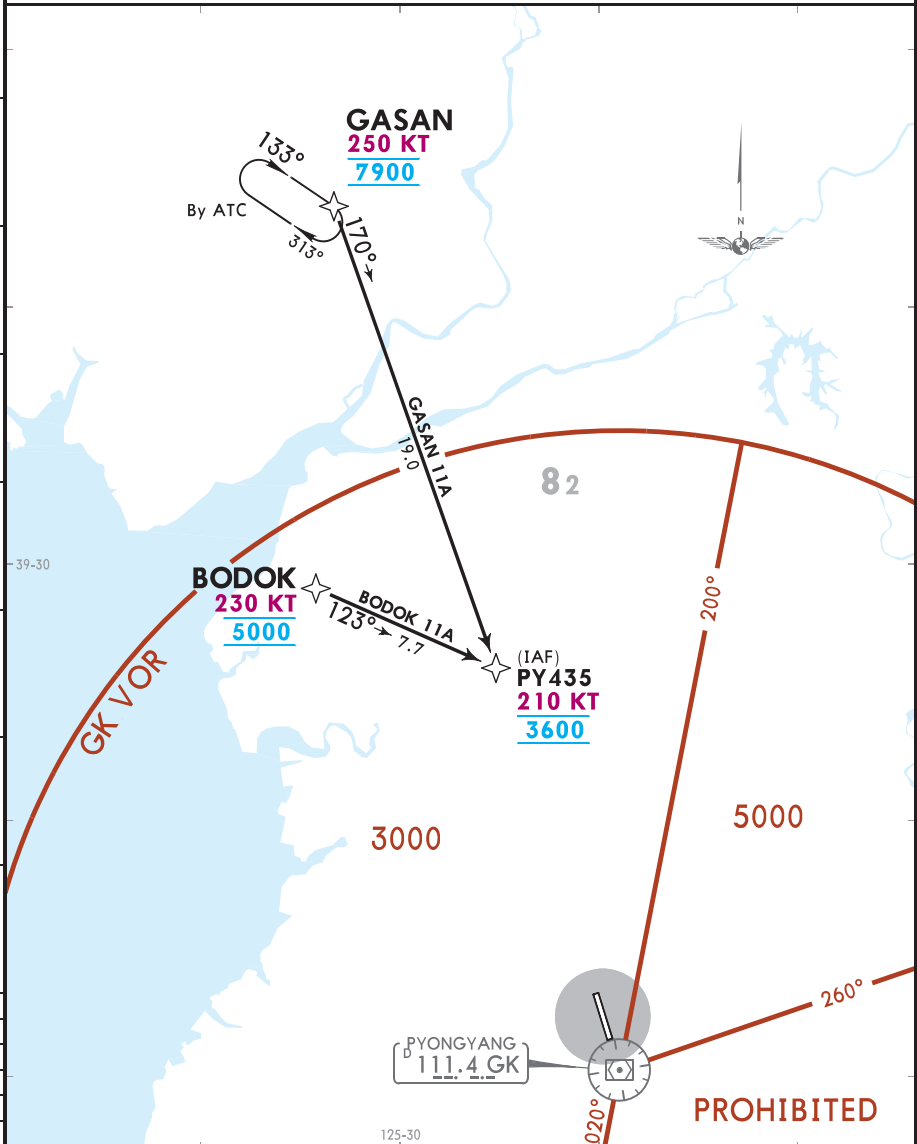


Apt Elev 89	Alt Set: hPa Trans level: FL130
	RNP 1.0 RNAV (GNSS)
	Pilots must obtain approval for RNAV STAR on first contact with ATC and carriage of certified GNSS receiver is mandatory.

**BODOK 11A [BOD11A]
GASAN 11A [GAS11A]
RNAV ARRIVALS
(RWY 17)**

45
40
35
30
25
20
15
10
5
0
-5
1 in=7.5 NM

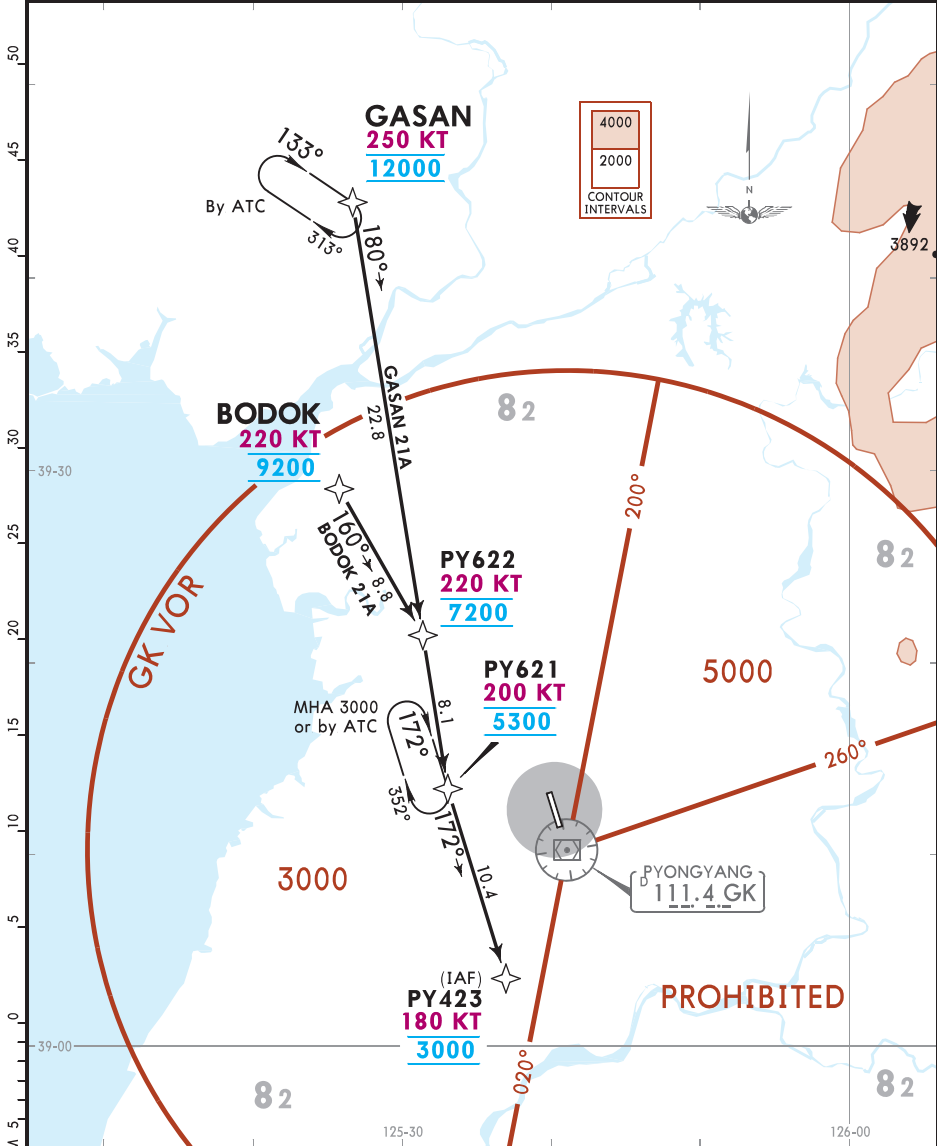


STAR	ROUTING
BODOK 11A	BODOK (K230; 5000) - PY435 (K210; 3600).
GASAN 11A	GASAN (K250; 7900) - PY435 (K210; 3600).

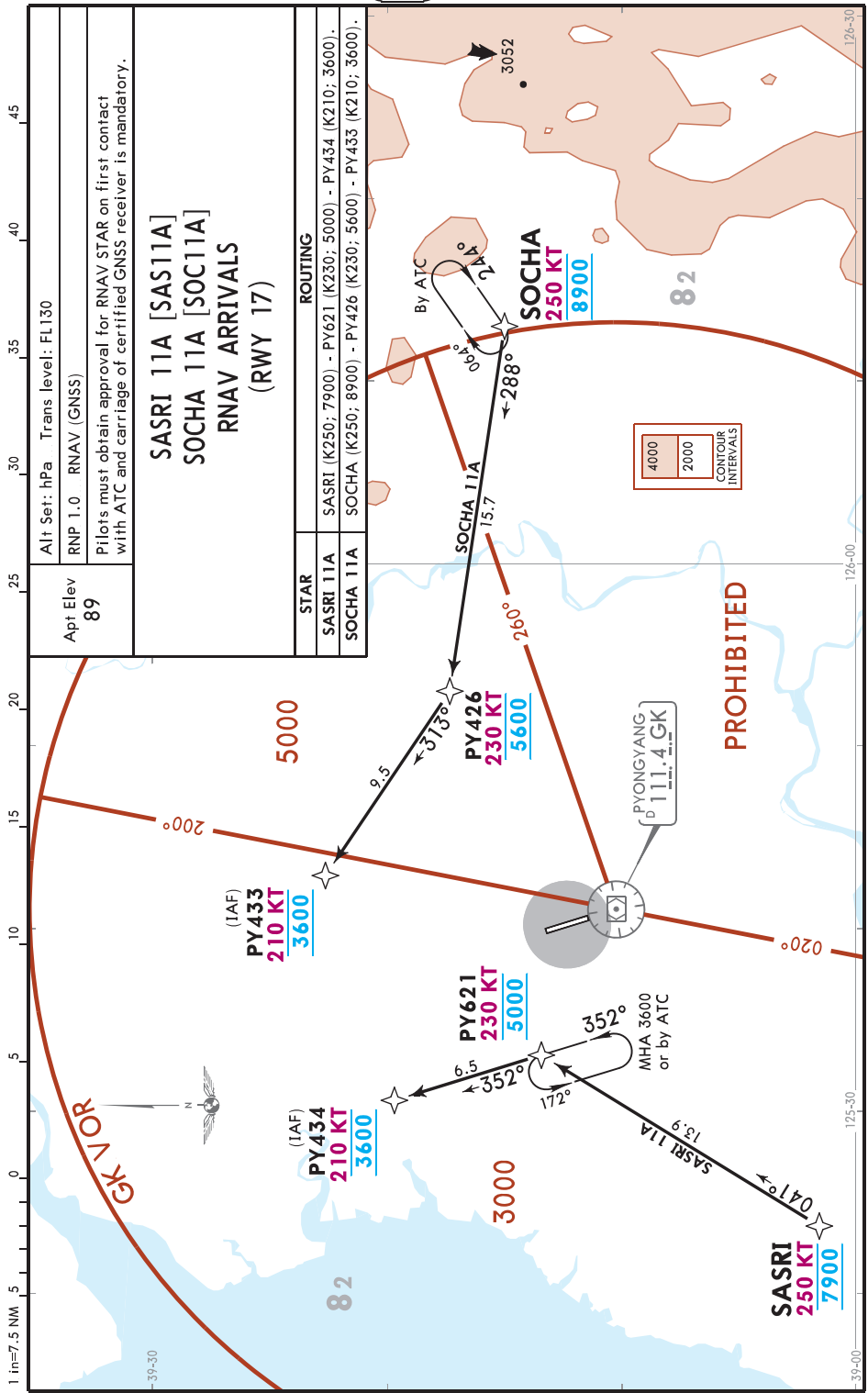
CHANGES: Airportname, GK VOR position, track update.

Apt Elev 89	Alt Set: hPa Trans level: FL130
	RNP 1.0 RNAV (GNSS)
	Pilots must obtain approval for RNAV STAR on first contact with ATC and carriage of certified GNSS receiver is mandatory.

BODOK 21A [BOD21A]
GASAN 21A [GAS21A]
RNAV ARRIVALS
(RWY 35)

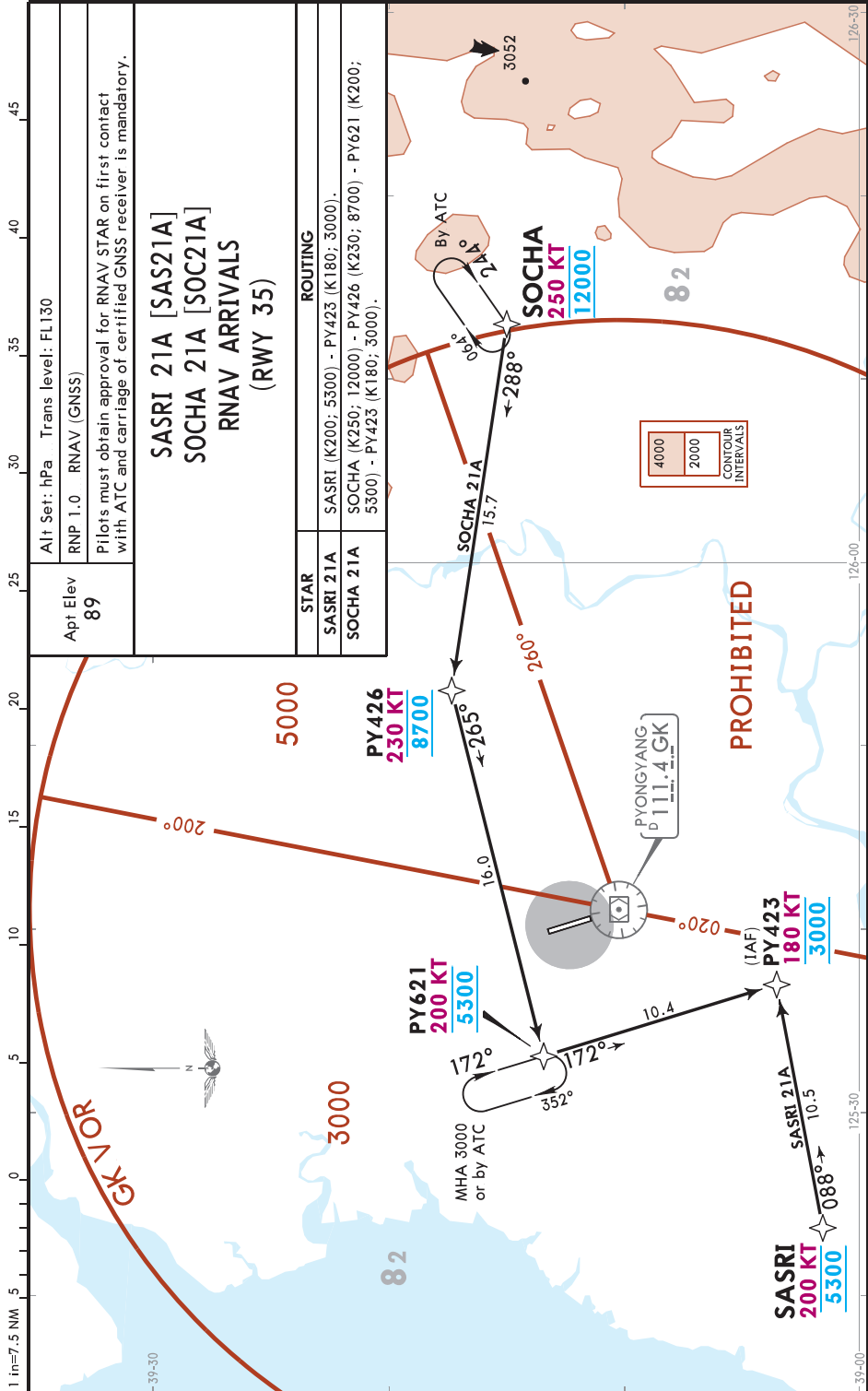


STAR	ROUTING
BODOK 21A	BODOK (K220; 9200) - PY622 (K220; 7200) - PY621 (K200; 5300) - PY423 (K180; 3000).
GASAN 21A	GASAN (K250; 12000) - PY622 (K220; 7200) - PY621 (K200; 5300) - PY423 (K180; 3000).



CHANGES: Airportname, GK VOR psition, track update.

© JEPPESEN, 2024. ALL RIGHTS RESERVED.

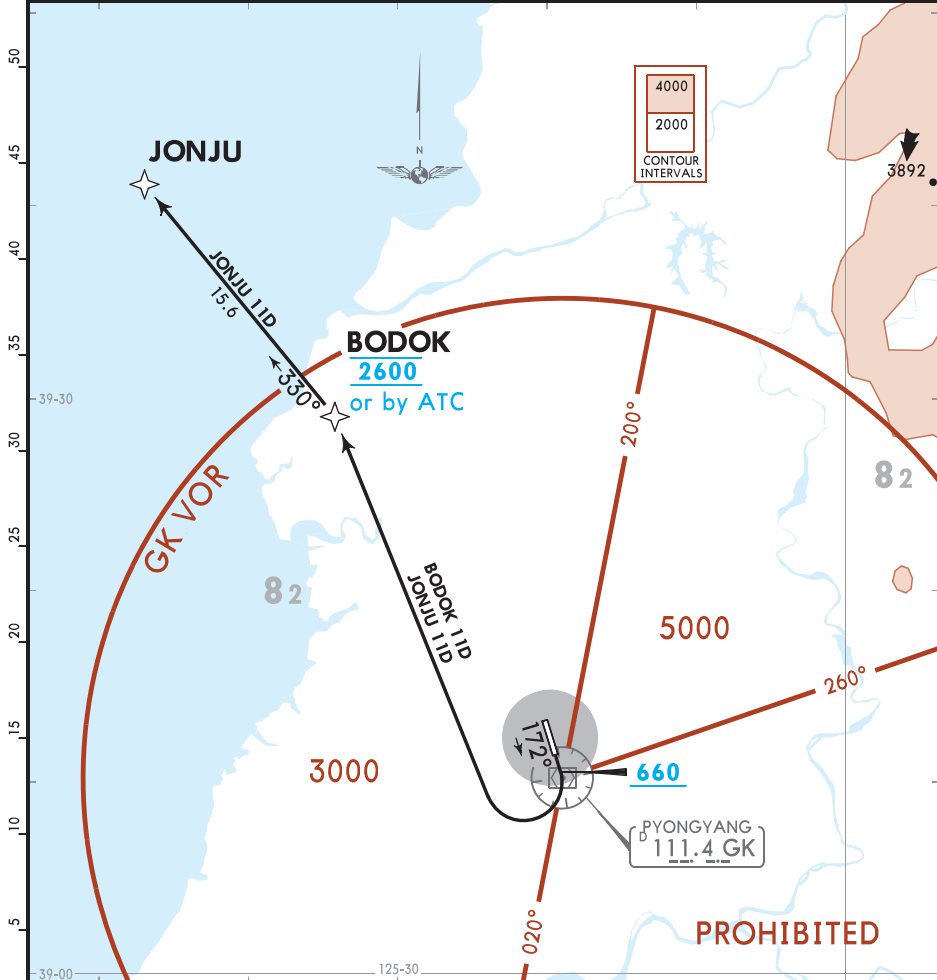


CHANGES: Airportname, GK VOR position, track update.

© JEPPESEN, 2024. ALL RIGHTS RESERVED.

Apt Elev 89	Trans alt: 12000
	RNP 1.0 RNAV (GNSS)
	Pilots must obtain approval for RNAV SID on first contact with ATC and carriage of certified GNSS receiver is mandatory.

**BODOK 11D [BOD11D]
JONJU 11D [JON11D]
RNAV DEPARTURES
(RWY 17)**



These SIDs require a minimum climb gradient of 3.7% up to 960.

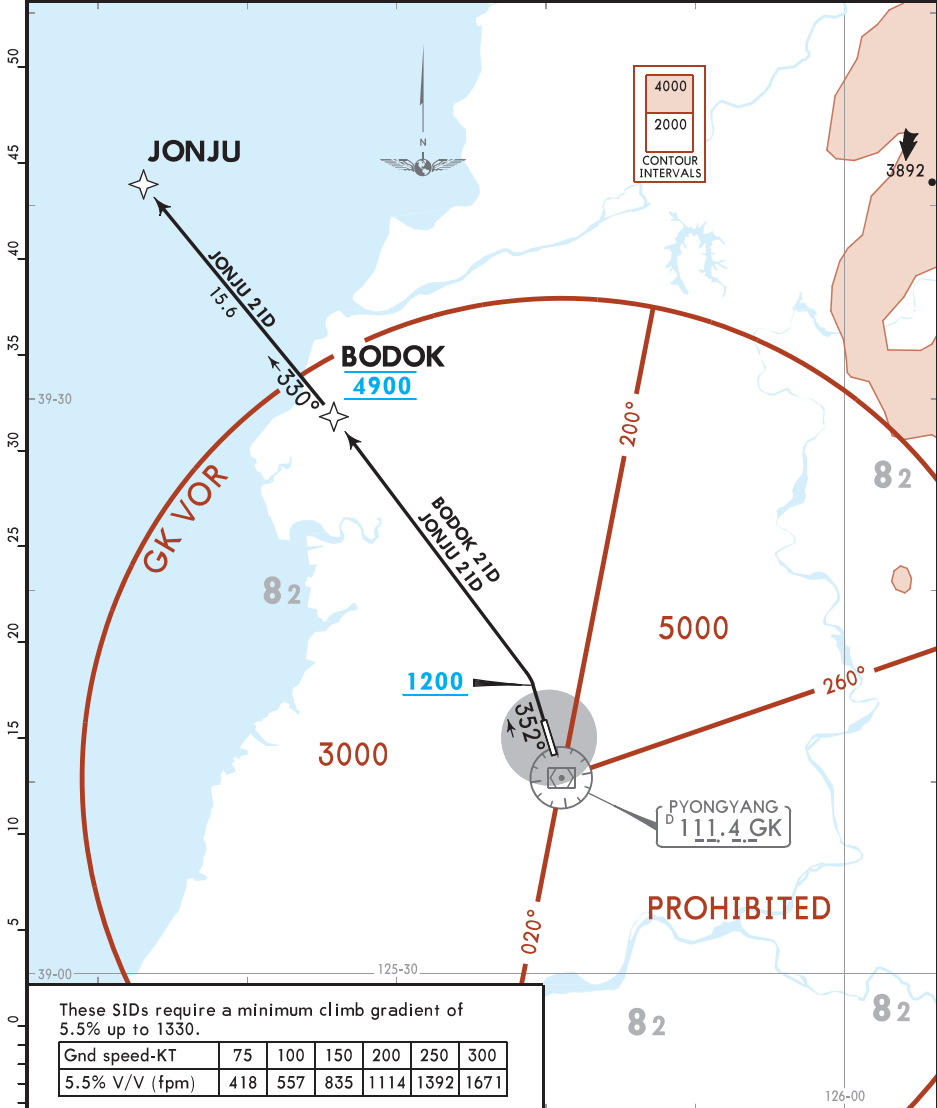
Gnd speed-KT	75	100	150	200	250	300
3.7% V/V (fpm)	281	375	562	749	937	1124

SID	ROUTING
BODOK 11D	Climb straight ahead, at or above 660 turn RIGHT direct to BODOK, or as instructed by ATC.
JONJU 11D	Climb straight ahead, at or above 660 turn RIGHT direct to BODOK, then to JONJU, or as instructed by ATC.

1 in=10 NM

Apt Elev 89	Trans alt: 12000
	RNP 1.0 RNAV (GNSS)
	Pilots must obtain approval for RNAV SID on first contact with ATC and carriage of certified GNSS receiver is mandatory.

**BODOK 21D [BOD21D]
JONJU 21D [JON21D]
RNAV DEPARTURES
(RWY 35)**



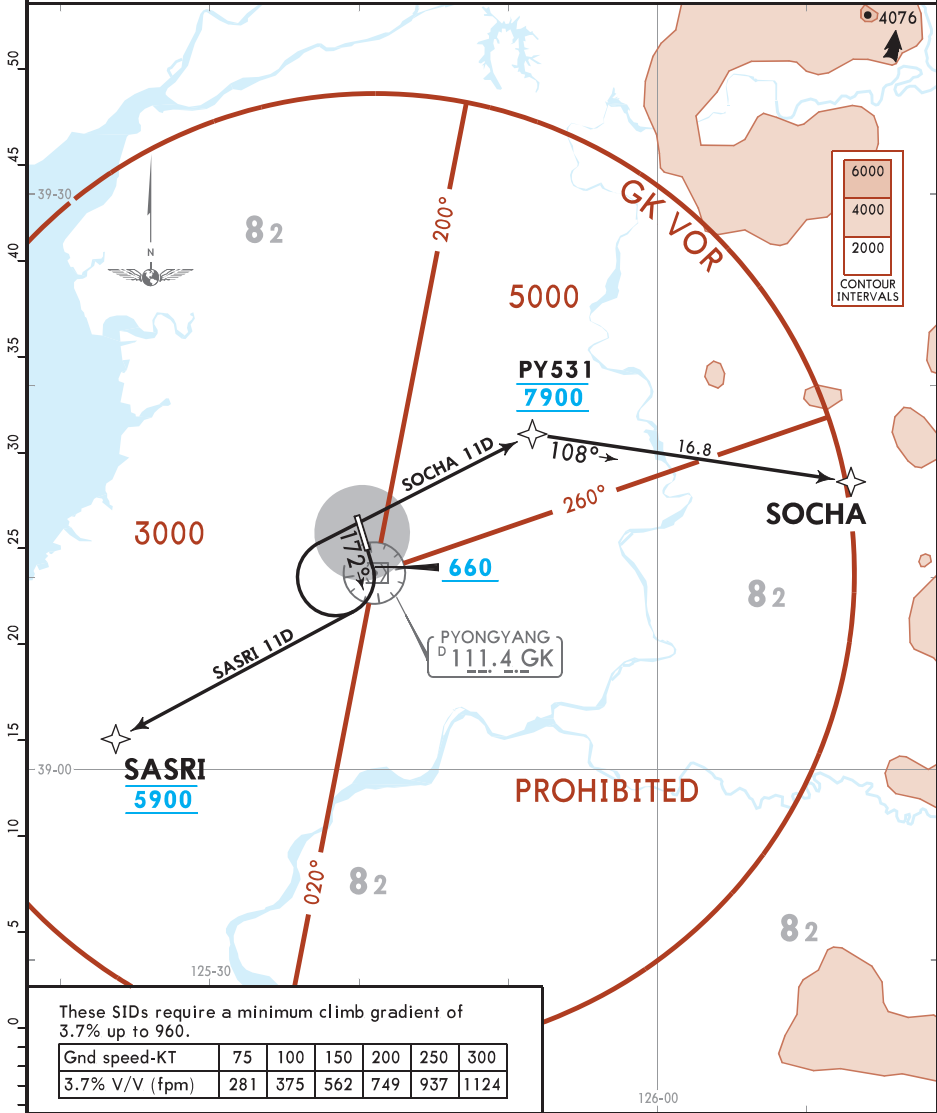
These SIDs require a minimum climb gradient of 5.5% up to 1330.

Gnd speed-KT	75	100	150	200	250	300
5.5% V/V (fpm)	418	557	835	1114	1392	1671

SID	ROUTING
BODOK 21D	Climb straight ahead, at or above 1200 turn LEFT direct to BODOK, or as instructed by ATC.
JONJU 21D	Climb straight ahead, at or above 1200 turn LEFT direct to BODOK, then to JONJU, or as instructed by ATC.

Apt Elev 89	Trans alt: 12000
	RNP 1.0 RNAV (GNSS)
	Pilots must obtain approval for RNAV SID on first contact with ATC and carriage of certified GNSS receiver is mandatory.

**SASRI 11D [SAS11D]
SOCHA 11D [SOC11D]
RNAV DEPARTURES
(RWY 17)**



SID	ROUTING
SASRI 11D	Climb straight ahead, at or above 660 turn RIGHT direct to SASRI, or as instructed by ATC.
SOCHA 11D	Climb straight ahead, at or above 660 turn RIGHT direct to PY531, then to SOCHA, or as instructed by ATC.

