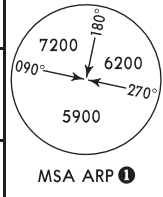


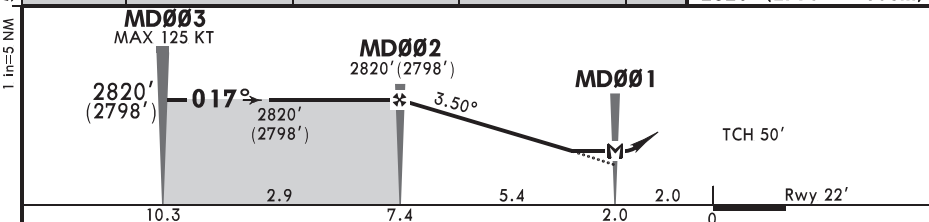
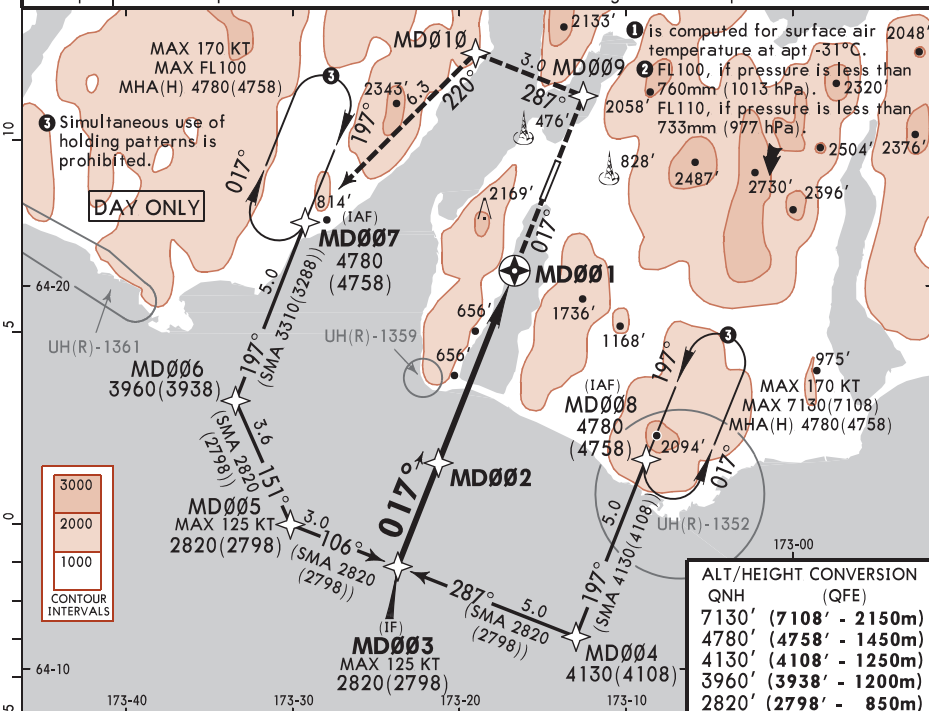
# UHMD/PVS PROVIDENIYA BAY

*PROVIDENIYA Tower				
119.3				
RNAV	Final Aptch Crs <b>017°</b>	<b>MD002</b> 2820'(2798')	MDA(H) <b>2740'</b> (2671')	Apt Elev 69' Rwy 22'
<b>MISSED APCH:</b> Climb on track 017° to MD009 (MAX 130 KT), then turn LEFT to MD010 (MAX 130 KT), then to MD007 climbing to 4780'(4758') or above, then proceed according to chart or to holding.				



Alt Set: MM(hPa on req) QNH on req (QFE) Trans level: FL090 Trans alt: 7130'(7108')

RNP apch 1. GNSS required. 2. Increased turbulence with down-draughts can be expected on final.



Gnd speed-Kts	70	90	100	120	140	160	130 KT MAX	MD009 on ↑ 017°
Descent Angle 3.50°	434	557	619	743	867	991		
MAP at MD001								

Timing not authorized for defining MAP.

Std		CIRCLE-TO-LAND	
	Max KT	MDA(H)	
A	100	2740'(2671')	V1500m
B	135	2740'(2671')	V1600m
C			
D			NOT APPLICABLE

1 Upon reaching OCA(H) execute circling approach.

CHANGES: Note added.

© JEPPESEN, 2024. ALL RIGHTS RESERVED.

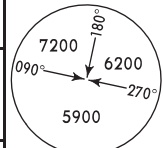


\*PROVIDENIYA Tower

119.3

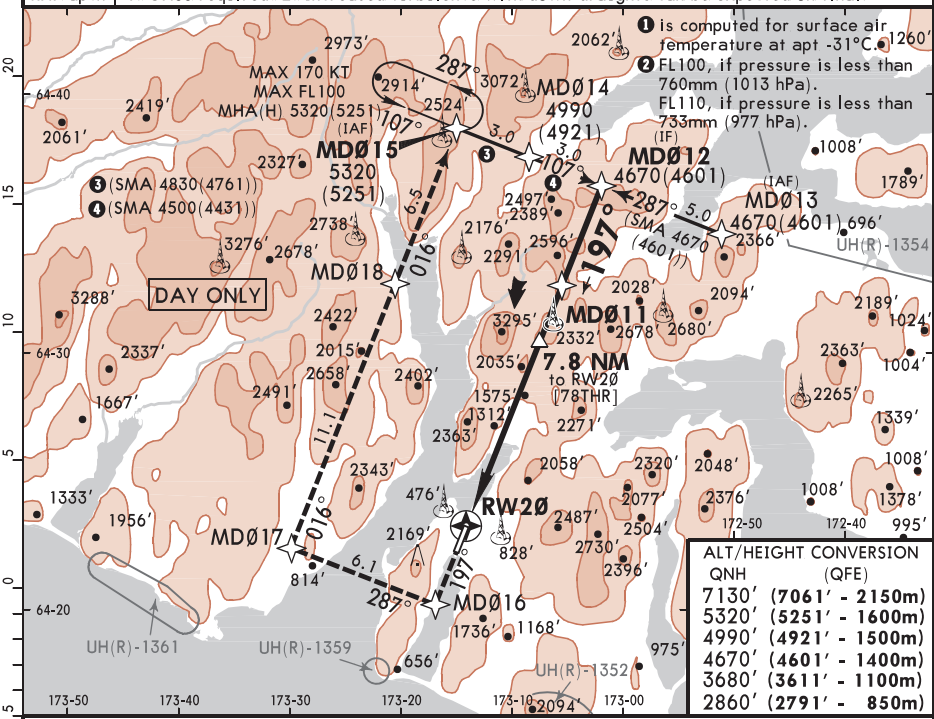
RNAV	Final Apt Crs <b>197°</b>	<b>MD011</b> 3680'(3611')	MDA(H) <b>2740'</b> (2671')	Apt Elev 69'
------	---------------------------------	------------------------------	--------------------------------	--------------

**MISSED APCH:** Climb on track 197° to MD016, then turn RIGHT to MD017, then turn RIGHT to MD018, then to MD015 climbing to 5320'(5251') or above, then proceed according to chart or to holding.



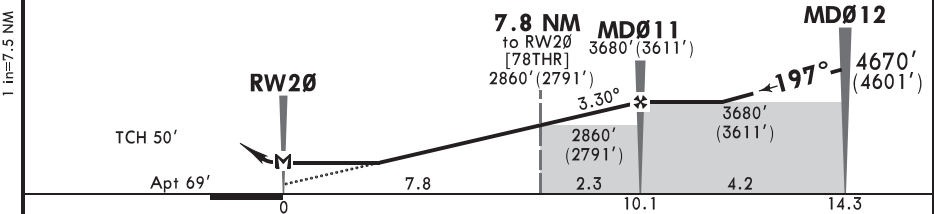
Alt Set: MM(hPa on req)    QNH on req (QFE)    Trans level: FL090    Trans alt: 7130'(7061')

RNP apch | 1. GNSS required. 2. Increased turbulence with down-draughts can be expected on final.



**ALT/HEIGHT CONVERSION**

QNH	(QFE)
7130'	(7061' - 2150m)
5320'	(5251' - 1600m)
4990'	(4921' - 1500m)
4670'	(4601' - 1400m)
3680'	(3611' - 1100m)
2860'	(2791' - 850m)



Gnd speed-KT	70	90	100	120	140	160
Descent Angle 3.30°	409	526	584	701	817	934
MAP at RW20						

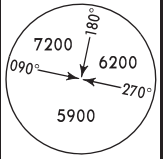


Timing not authorized for defining MAP.

Std	Max KT	MDA(H)	
A	100	2740'(2671')	V1500m
B	135	2740'(2671')	V1600m
C			
D			

NOT APPLICABLE

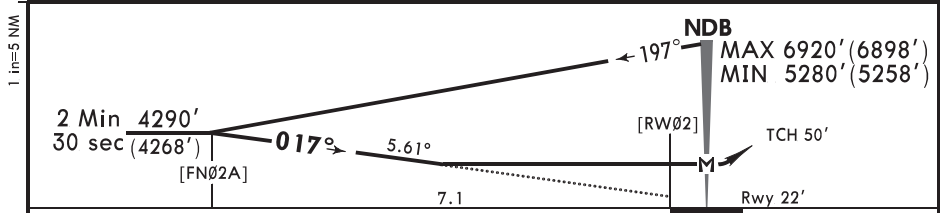
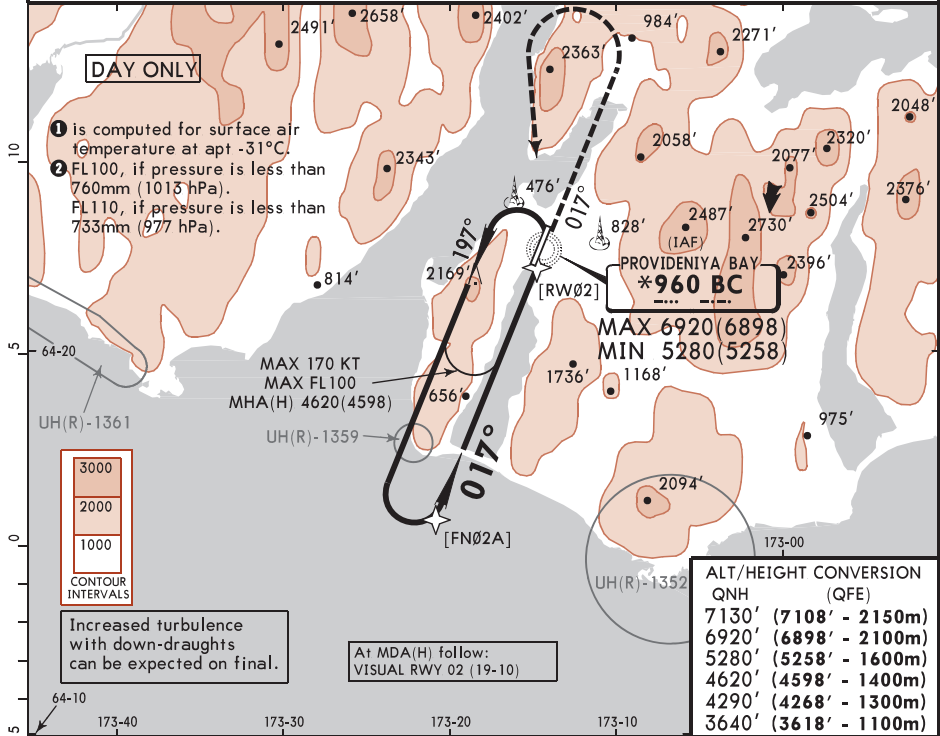
*PROVIDENIYA Tower				
119.3				
NDB BC <b>*960</b>	Final Apch Crs <b>017°</b>	[FN02A] <b>4290'(4268')</b>	MDA(H) <b>3250'(3228')</b>	Apt Elev 69' Rwy 22'



**MISSED APCH:** Climb on track 017° to 3640'(3618') or above, then turn LEFT (MAX 130 KT) to NDB climbing to 4620'(4598') or above. Turn before passing MAP is prohibited.

MSA ARP 1

Alt Set: MM(hPa on req) QNH on req (QFE) Trans level: FL090 2 Trans alt: 7130'(7108')



Gnd speed-Kts	70	90	100	120	140	160	
Descent Angle 5.61°	696	895	995	1194	1393	1592	
MAP at NDB							
Timing not authorized for defining MAP							

<b>Std</b>		CIRCLE-TO-LAND	
Circling height based on rwy 02 elev of 22'.			
Max KT	MDA(H)		
A   100	3250'(3228')	3640'	V1500m
B   135	3250'(3228')	3640'	V1600m
C	NOT APPLICABLE		
D	NOT APPLICABLE		

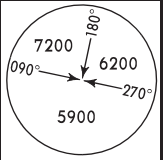


\*PROVIDENIYA Tower

119.3

BRIEFING STRIP™

VISUAL	Final Apch Crs see Chart	Minimum Alt No FAF	MDA(H) <b>3250'</b> (3228')	Apt Elev 69' RWY 22'
--------	--------------------------------	-----------------------	--------------------------------	-------------------------

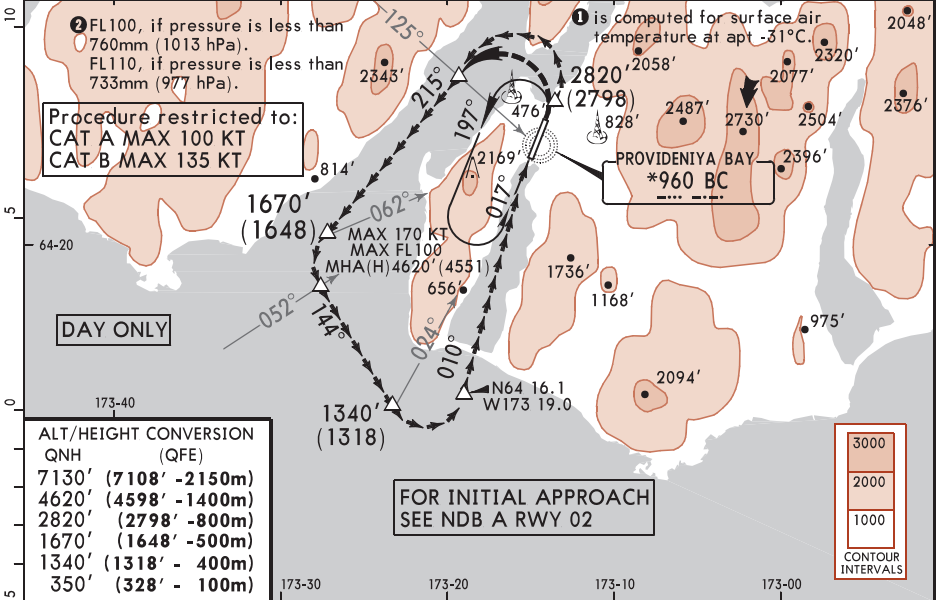


**MISSED APCH:** Climb on track 017° to 350' (328') or above, then turn LEFT onto 215° to ABEAM NDB (QDM 125°), then according to chart.

MSA ARP

Alt Set: MM(hPa on req) QNH on req (QFE) Trans level: FL090 Trans alt: 7130' (7108')

1. Missed apch shall be executed under VFR.
2. When visual references are lost: turn to NDB BC to join the holding climbing to 4620' (4598') or above.
3. Increased turbulence with down-draughts can be expected.



ALT/HEIGHT CONVERSION QNH (QFE)
7130' (7108' - 2150m)
4620' (4598' - 1400m)
2820' (2798' - 800m)
1670' (1648' - 500m)
1340' (1318' - 400m)
350' (328' - 100m)


Refer to  
Missed Apch  
above

VISUAL LANDING  
Circling height based on rwy 02 elev of 22'.  
MDA(H) **3250'** (3228')

A	V1500m
B	V1600m
C	NOT APPLICABLE
D	NOT APPLICABLE

