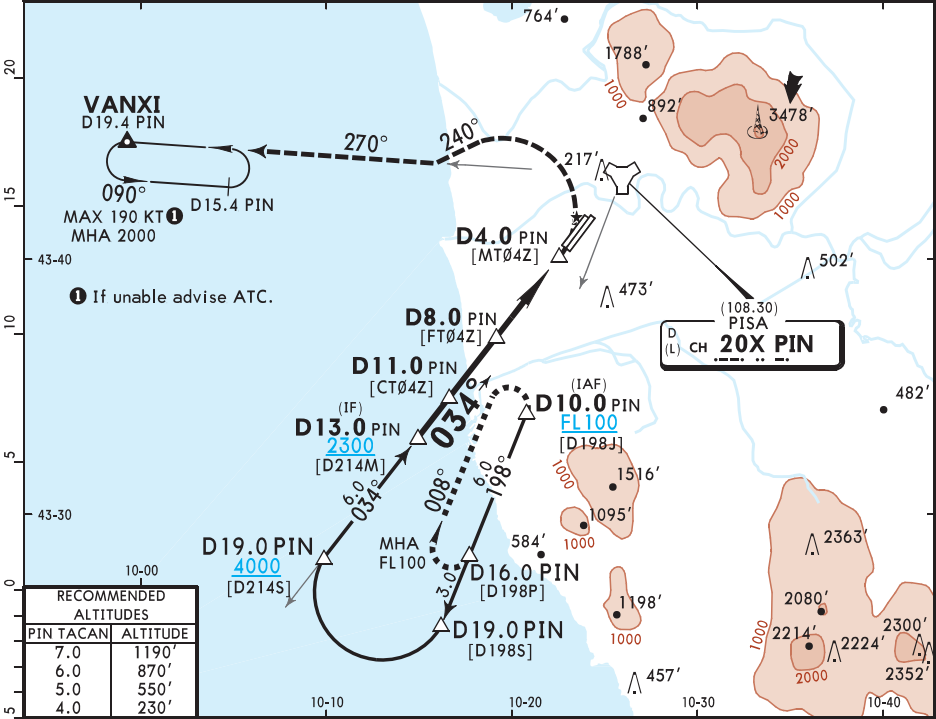
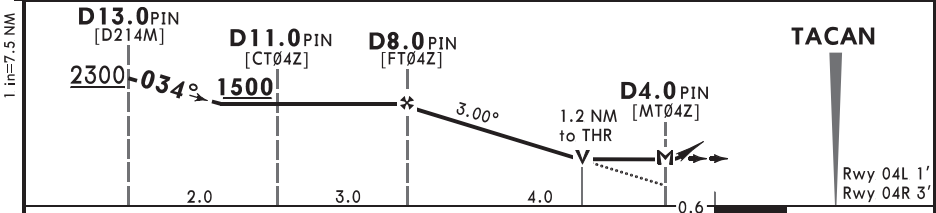


BRIEFING STRIP™	ATIS		PISA Approach			PISA Tower		*Ground
	130.065		124.280	126.080	233.050	118.755	234.100	120.080
	TACAN PIN CH <b>20X</b> (108.30)	Final Apch Crs <b>034°</b>	D8.0 PIN Rwy 04L <b>1500</b> (1499') Rwy 04R <b>1500</b> (1497')		Refer to Minimums	Apt Elev 6' Rwy 04L 1' Rwy 04R 3'		
	<b>MISSED APCH:</b> At MAP turn <b>LEFT</b> (MAX 240 KT) on track 240° climbing to 2000' to join and follow R-270 PIN TACAN outbound to VANXI holding.							
Alt Set: hPa		Rwy Elev: 0 hPa		Trans level: By ATC		Trans alt: 6000'		
EMERG SAFE ALT 100 NM 10,200'								MSA PIN TACAN



RECOMMENDED ALTITUDES	
PIN TACAN	ALTITUDE
7.0	1190'
6.0	870'
5.0	550'
4.0	230'



Gnd speed-Kts	70	90	100	120	140	160	Rwy 04L HIALS PAPI REIL	Rwy 04R HIALS-II PAPI PAPI	<b>240 KT</b> MAX on LT
Descent Angle 3.00°	372	478	531	637	743	849			<b>240°</b>

MAP at D4.0 PIN				Military		STRAIGHT-IN LANDING		CIRCLE-TO-LAND	
RWY 04L		RWY 04R		Not authorized West of rwy		Max KT			
MDA(H) <b>440'</b> (439')		MDA(H) <b>440'</b> (437')				100		760' (754') 800'-V3.5 km	
ALS out		ALS out				135		870' (864') 900'-V4.0 km	
A						175		1570' (1564') 1600'-V5.0 km	
B						185			
C	500'-V1.6 km	500'-V2.0 km	500'-V1.3 km	500'-V2.0 km					
D									
E									