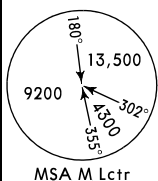
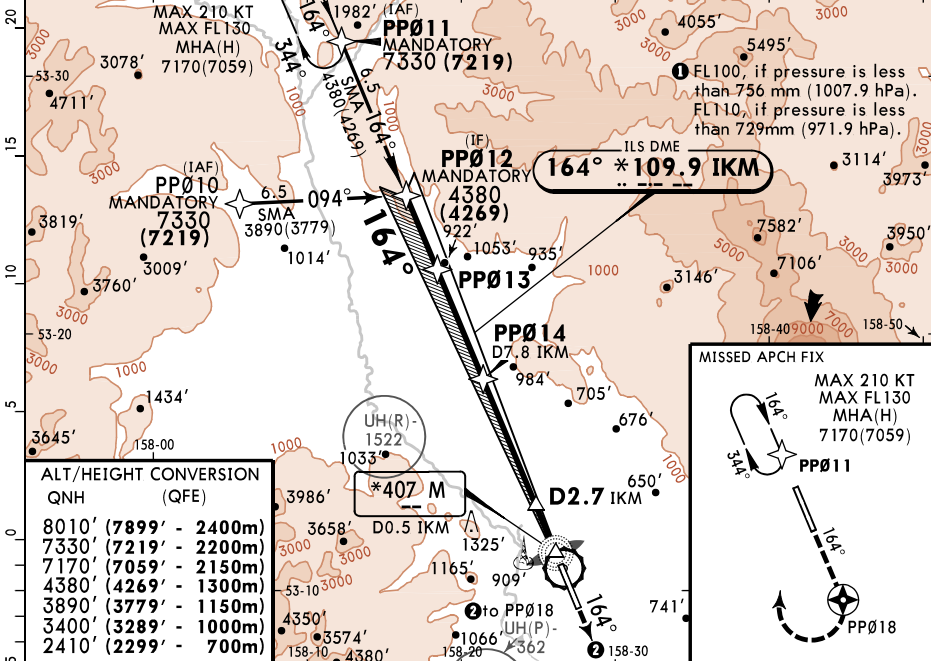


*ATIS 126.8		PETROPAVLOVSK Radar (APP/TWR) 119.4 124.0X		Ground (TWR) 127.0 124.0X	
LOC IKM *109.9	Final Apch Crs 164°	PP014 MANDATORY 2410'(2299')	ILS DA(H) Refer to Minimums	Apt Elev 128' Rwy 111'	



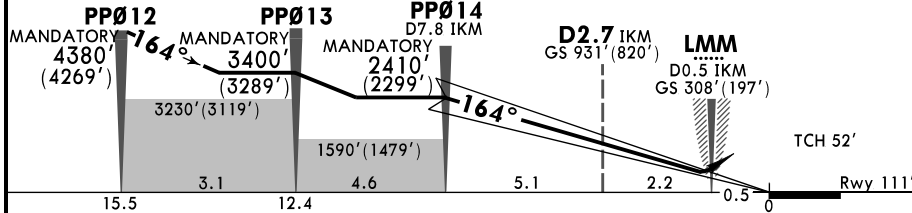
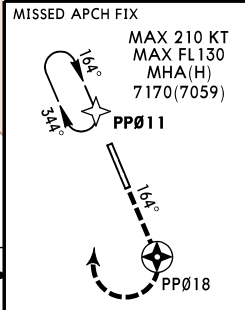
MISSED APCH: Climb on 164° to PP018, then turn RIGHT to PP011 climbing to 7170'(7059') or above and hold.

Alt Set: MM (hPa on req) QNH on req (QFE) Trans level: FL090 Trans alt: 8010'(7899')
RNAV 1 required for initial, intermediate and missed apch. GNSS required.

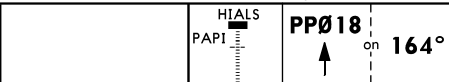


ALT/HEIGHT CONVERSION

QNH	(QFE)
8010' (7899' - 2400m)	
7330' (7219' - 2200m)	
7170' (7059' - 2150m)	
4380' (4269' - 1300m)	
3890' (3779' - 1150m)	
3400' (3289' - 1000m)	
2410' (2299' - 700m)	



Gnd speed-Kts	70	90	100	120	140	160
GS	2.70°	334	430	478	573	669



STRAIGHT-IN LANDING RWY 16R

ILS		LOC (GS out)	
A: 311'(203')	C: 324'(213')		
DA(H) B: 314'(203')	D: 334'(223')		
FULL	ALS out		

CIRCLE-TO-LAND

Prohibited West of airport	
Max Kts	MDA(H)
100	970' (842') 1600m
135	1140'(1012') 2400m
180	1580'(1452') 4800m
205	1830'(1702') 4800m

PANS OPS

A		
B	1200m	
C		
D		

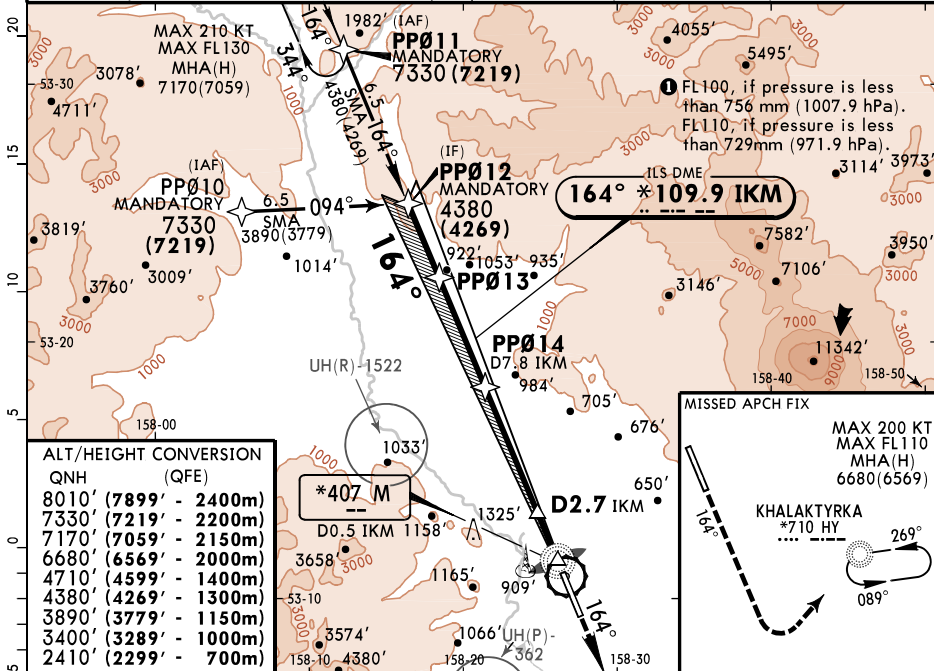
NOT AUTHORIZED

NOT AUTHORIZED	
----------------	--

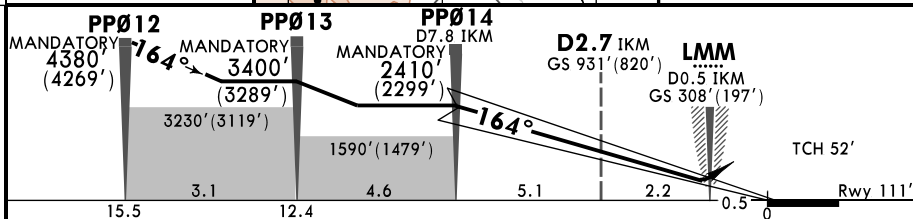
UHPP/PKC JEPPESEN PETROPAVLOVSK-KAMCHATSKY, RUSSIA YELIZOVO 13 SEP 24 (11-2) ILS Y Rwy 16R

*ATIS 126.8		PETROPAVLOVSK Radar (APP/TWR) 119.4 124.0X		Ground (TWR) 127.0 124.0X		
LOC IKM *109.9	Final Apch Crs 164°	PP014 MANDATORY 2410'(2299')	ILS DA(H) Refer to Minimums	Apt Elev 128' Rwy 111'		
MISSED APCH: Climb on 164° to 4710' (4599'), then turn LEFT to HY NDM climbing to 7170' (7059') or above and hold.						

Alt Set: MM (hPa on req) QNH on req (QFE) Trans level: FL090 **1** Trans alt: 8010' (7899')
 RNAV 1 required for initial and intermediate apch. 1. Dual ADF required. 2. GNSS required.



ALT/HEIGHT CONVERSION	QNH (QFE)
8010' (7899' - 2400m)	
7330' (7219' - 2200m)	
7170' (7059' - 2150m)	
6680' (6569' - 2000m)	
4710' (4599' - 1400m)	
4380' (4269' - 1300m)	
3890' (3779' - 1150m)	
3400' (3289' - 1000m)	
2410' (2299' - 700m)	



15.5	12.4					5.1	2.2	0.5	0
Gnd speed-Kts	70	90	100	120	140	160			
GS	2.70°	334	430	478	573	669	764		

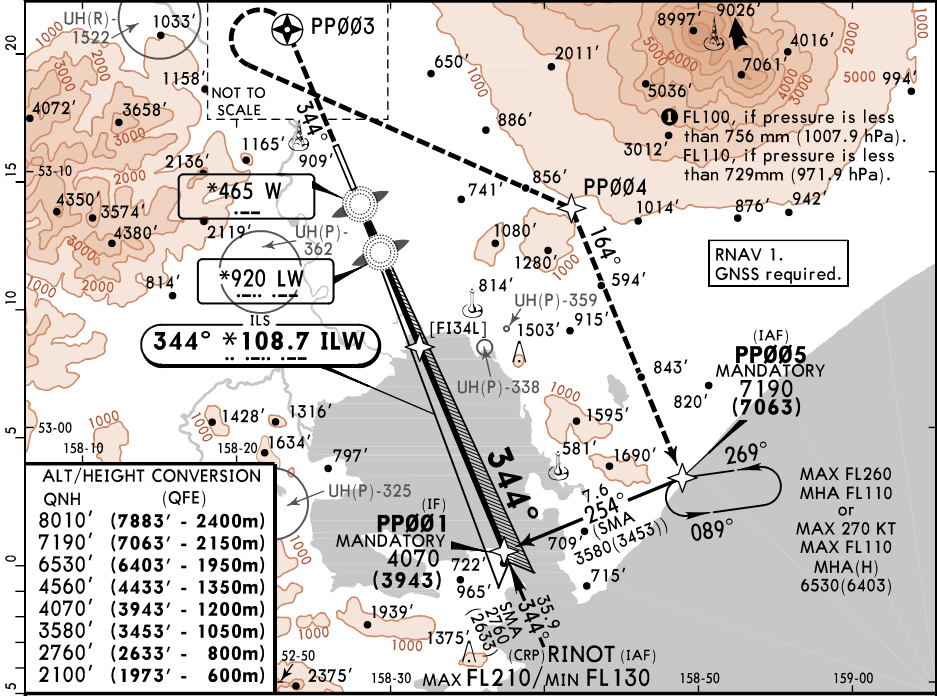
STRAIGHT-IN LANDING RWY 16R				CIRCLE-TO-LAND		
ILS DA(H) A: 311'(200') C: 324'(213') B: 314'(203') D: 334'(223')		LOC (GS out)		Prohibited West of airport		
FULL		ALS out		Max Kts	MDA(H)	
A					100	970' (842') 1600m
B	1200m		NOT AUTHORIZED		135	1140' (1012') 2400m
C					180	1580' (1452') 4800m
D					205	1830' (1702') 4800m

CHANGES: Prohibited area.

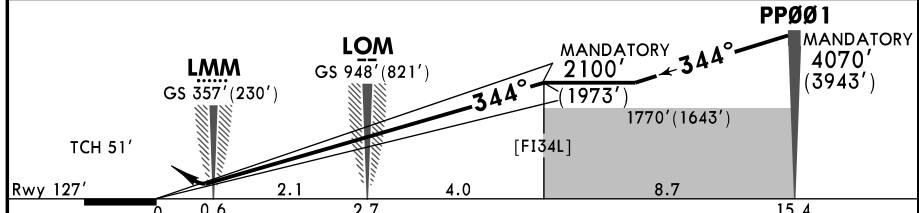
© JEPPESEN, 2017, 2024. ALL RIGHTS RESERVED.

*ATIS 126.8		PETROPAVLOVSK Radar (APP/TWR) 119.4 124.0X		Ground (TWR) 127.0 124.0X		13,500 MSA ARP
LOC ILW *108.7	Final ApcH Crs 344°	[F134L] MANDATORY 2100'(1973')	ILS DA(H) Refer to Minimums	Apt Elev 128' Rwy 127'		
MISSED APCH: Climb on 344° to PP003, then turn LEFT direct to PP004, then proceed on 164° to PP005 climbing to 7190'(7063'), then according to chart or join holding.						

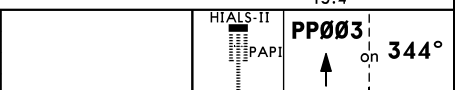
Alt Set: MM (hPa on req) QNH on req (QFE) Trans level: FL090 **1** Trans alt: 8010' (7883')



QNH (QFE)	QNH (QFE)
8010' (7883' - 2400m)	
7190' (7063' - 2150m)	
6530' (6403' - 1950m)	
4560' (4433' - 1350m)	
4070' (3943' - 1200m)	
3580' (3453' - 1050m)	
2760' (2633' - 800m)	
2100' (1973' - 600m)	



Gnd speed-Kts	70	90	100	120	140	160
Gs	2.70°	334	430	478	573	669

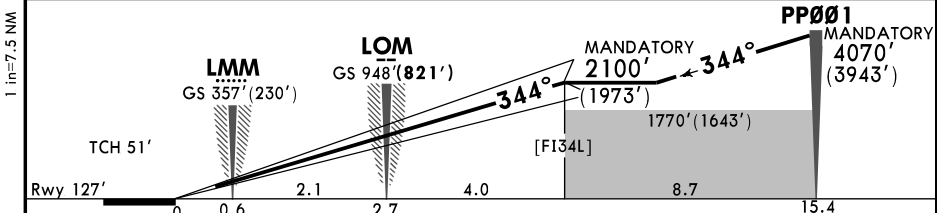
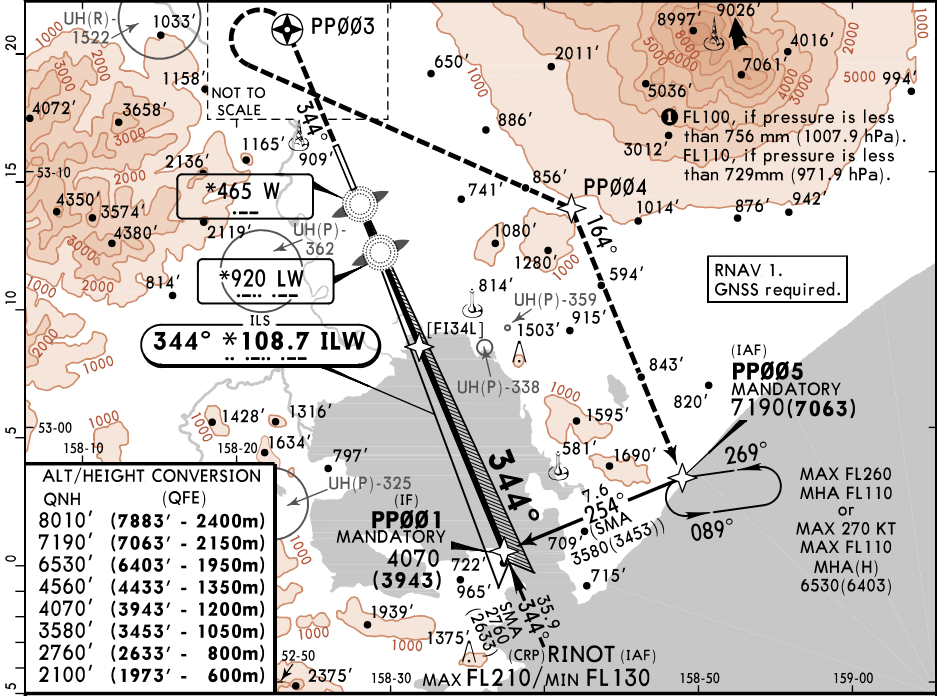


STRAIGHT-IN LANDING RWY 34L 1				CIRCLE-TO-LAND			
Missed apch climb gradient mim 4.0% up to 4560'(4433') DA(H) 327'(200')				Missed apch climb gradient mim 2.5% A:1055'(928') C:1075'(948') B:1065'(938') D:1085'(958')			
FULL				IDAZ or CL out			
ALS out				ALS out			
3200m				3200m			
3600m				4400m			
4000m				4800m			
Max Kts				MDA(H)			
100				1510'(1382') 2000m 2			
135				1510'(1382') 2400m 2			
180				1710'(1582') 4800m			
205				1830'(1702') 4800m			

1 LOC (GS out): NOT AUTHORIZED. **2** or higher minimums of preceding straight-in approach.
 CHANGES: Prohibited areas. © JEPPESEN, 2017, 2024. ALL RIGHTS RESERVED.

*ATIS 126.8		PETROPAVLOVSK Radar (APP/TWR) 119.4 124.0X		Ground (TWR) 127.0 124.0X		13,500 MSA ARP
LOC ILW *108.7	Final ApcH Crs 344°	[FI34L] MANDATORY 2100'(1973')	CAT II ILS Refer to Minimums	Apt Elev 128'	Rwy 127'	
MISSED APCH: Climb on 344° to PP003, then turn LEFT direct to PP004, then proceed on 164° to PP005 climbing to 7190'(7063'), then according to chart or join holding.						

Alt Set: MM (hPa on req) QNH on req (QFE) Trans level: FL090 Trans alt: 8010' (7883')



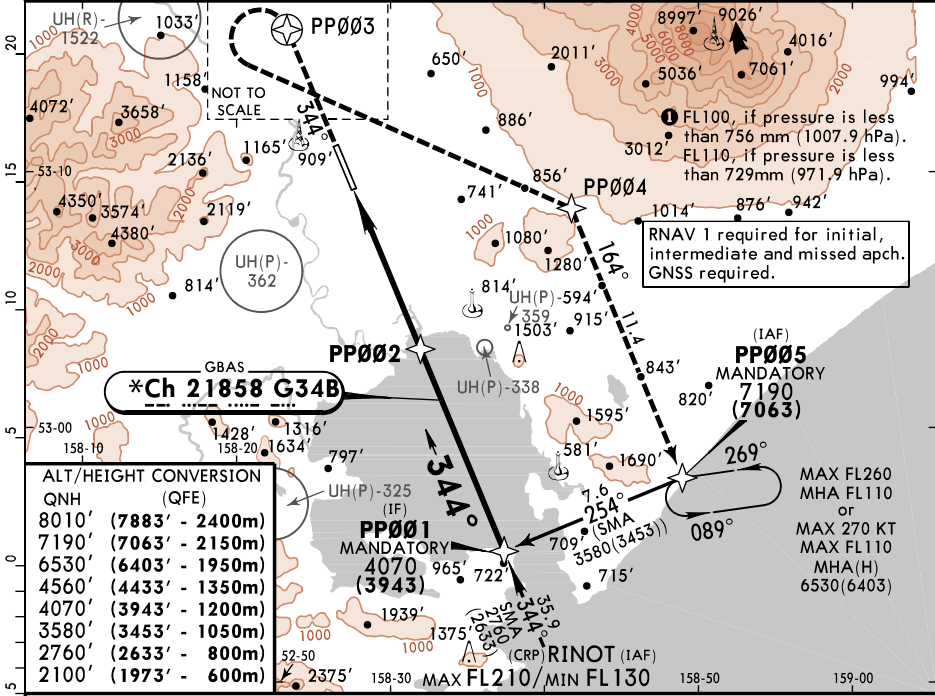
Gnd speed-Kts	70	90	100	120	140	160	HIALS-II PAPI
Gs	2.70°	334	430	478	573	669	

STRAIGHT-IN LANDING RWY 34L				CAT II ILS			
Missed apch climb gradient mim 4.0% up to 4560'(4433')				Missed apch climb gradient mim 2.5%			
AB	C	D		A	B	C	D
RA 105'	RA 111'	RA 126'		DA(H) 967'	DA(H) 983'	DA(H) 996'	DA(H) 1010'
227'(100')	232'(105')	245'(118')		(840')	(856')	(869')	(883')

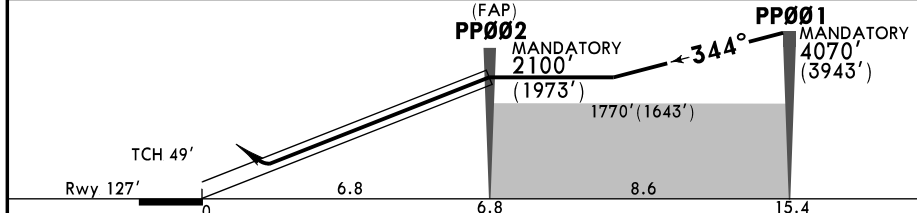
RVR 300m	RVR 450m
----------	----------

*ATIS 126.8		PETROPAVLOVSK Radar (APP/TWR) 119.4 124.0X		Ground (TWR) 127.0 124.0X		13,500 MSA ARP
GBAS *Ch 21858 G34B	Final ApcH Crs 344°	PP002 MANDATORY 2100'(1973')	GLS DA(H) Refer to Minimums	Apt Elev 128' Rwy 127'		
MISSED APCH: Climb on 344° to PP003, then turn LEFT direct to PP004, then proceed on 164° to PP005 climbing to 7190'(7063'), then according to chart or join holding.						

Alt Set: MM (hPa on req) QNH on req (QFE) Trans level: FL090 Trans alt: 8010'(7883')



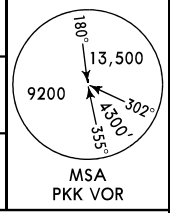
QNH (QFE)	8010' (7883' - 2400m)
7190' (7063' - 2150m)	6530' (6403' - 1950m)
4560' (4433' - 1350m)	4070' (3943' - 1200m)
3580' (3453' - 1050m)	2760' (2633' - 800m)
2100' (1973' - 600m)	



Gnd speed-Kts	70	90	100	120	140	160	HIALS-II PAPI PP003 on 344°
Glide Path Angle	2.70°	334	430	478	573	669	

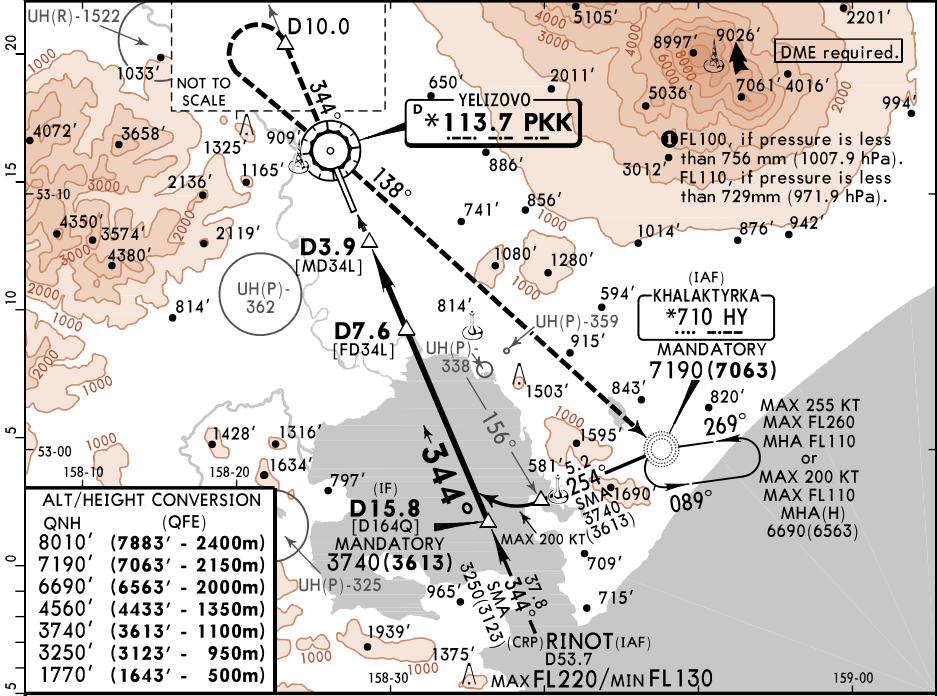
STRAIGHT-IN LANDING RWY 34L						CIRCLE-TO-LAND	
Missed apch climb gradient mim 4.0% up to 4560'(4433')			Missed apch climb gradient mim 2.5%			Prohibited West of airport	
DA(H) 327'(200')			DA(H) A: 1056'(929') C: 1076'(949') B: 1063'(936') D: 1086'(959')				
FULL	TDZ or CL out	ALS out	FULL	TDZ or CL out	ALS out	Max Kts	MDA(H)
A						100	1510'(1382') 2000m
B	RVR 550m	RVR 720m				135	1510'(1382') 2400m
C	VIS 800m	VIS 800m	1200m			180	1710'(1582') 4800m
D				4000m	4800m	205	1830'(1702') 4800m

*ATIS		PETROPAVLOVSK Radar (APP/TWR)		Ground (TWR)	
126.8		119.4	124.0X	127.0	124.0X
VOR PKK	Final Apch Crs	D7.6 MANDATORY	MDA(H) (CONDITIONAL)	Apt Elev 128'	
*113.7	344°	1770'(1643')	820'(693')	Rwy 127'	



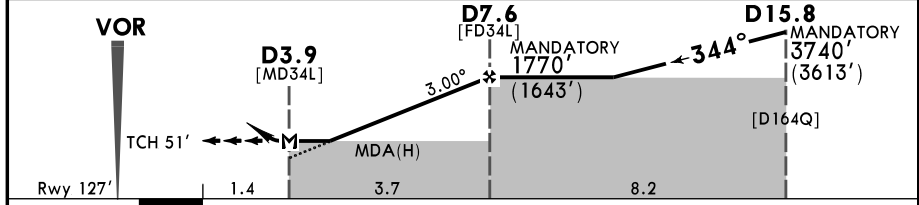
MISSED APCH: Climb on R-344 to D10.0, then turn LEFT to VOR, then proceed on 138° HY NDB to NDB climbing to 7190'(7063') or above, then proceed to holding.

Alt Set: MM (hPa on req) QNH on req (QFE) Trans level: FL090 **(1)** Trans alt: 8010'(7883')



ALT/HEIGHT CONVERSION

QNH (QFE)	(ft)	(m)
8010'	(7883' - 2400m)	
7190'	(7063' - 2150m)	
6690'	(6563' - 2000m)	
4560'	(4433' - 1350m)	
3740'	(3613' - 1100m)	
3250'	(3123' - 950m)	
1770'	(1643' - 500m)	



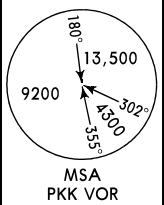
Gnd speed-Kts	70	90	100	120	140	160
Descent Angle 3.00°	372	478	531	637	743	849

HIALS-II
PAPI
D10.0 **PKK**
on **113.7**
R-344

STRAIGHT-IN LANDING RWY 34L				CIRCLE-TO-LAND			
Missed apch climb gradient mim 2.9% up to 4560'(4433')		Missed apch climb gradient mim 2.5%		Prohibited West of airport			
MDA(H) 820'(693')		MDA(H) 1220'(1093')		Max Kts MDA(H)			
ALS out		ALS out					
A	NOT APPLICABLE		NOT APPLICABLE		A NOT APPLICABLE		
B	NOT APPLICABLE		NOT APPLICABLE		B NOT APPLICABLE		
C	2400m	3200m	4000m	4800m	180	1710'(1582')	4800m
D	2800m	3600m			205	1830'(1702')	4800m

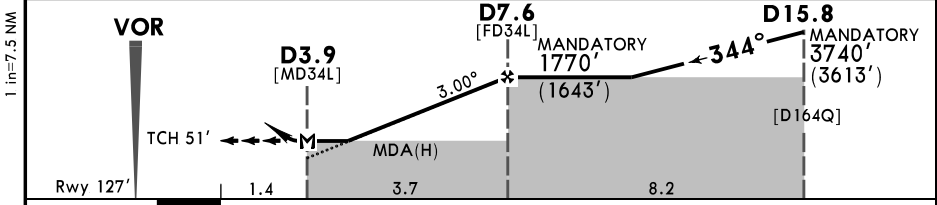
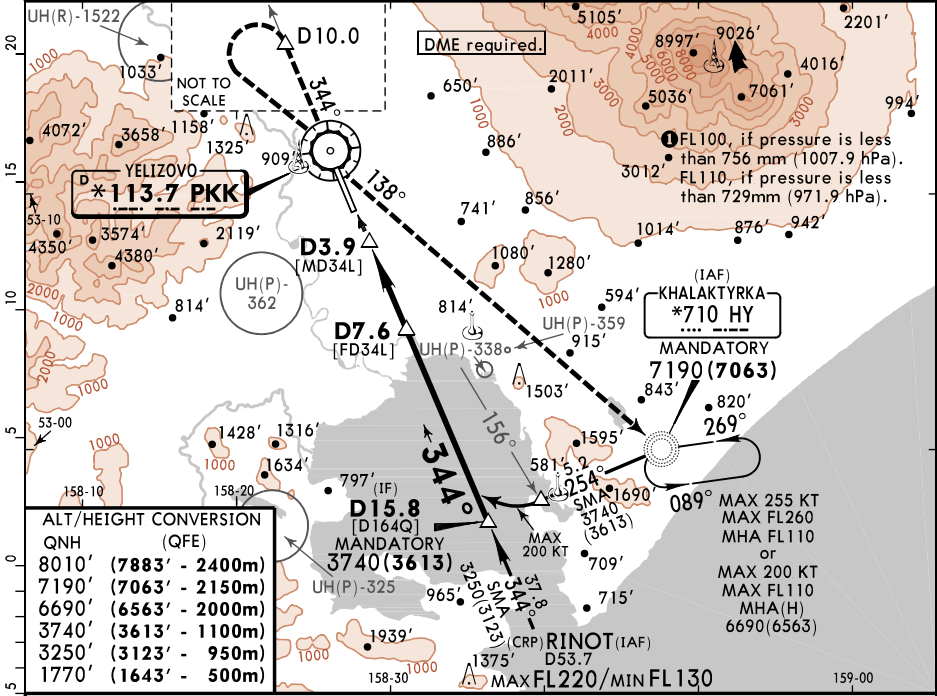
PANS OPS

*ATIS 126.8		PETROPAVLOVSK Radar (APP/TWR) 119.4 124.0X		Ground (TWR) 127.0 124.0X	
VOR PKK *113.7	Final Apch Crs 344°	D7.6 MANDATORY 1770'(1643')	MDA(H) 820'(693')	Apt Elev 128' Rwy 127'	



MISSED APCH: Climb on R-344 to D10.0, then turn LEFT to VOR, then proceed on 138° HY NDB to NDB climbing to 7190'(7063') or above, then proceed to holding.

Alt Set: MM (hPa on req) QNH on req (QFE) Trans level: FL090 **1** Trans alt: 8010'(7883')



Gnd speed-Kts	70	90	100	120	140	160
Descent Angle 3.00°	372	478	531	637	743	849

HIALS-II

PAP1

D10.0 on **113.7**

R-344

STRAIGHT-IN LANDING RWY 34L		CIRCLE-TO-LAND	
MDA(H) 820'(693')		Prohibited West of airport	
ALS out		Max Kts	MDA(H)
A	3200m	100	1510'(1382') 3200m
B		135	
C	NOT APPLICABLE	C	NOT APPLICABLE
D		D	

PANS OPS