

JEPPESEN® Chart Alert

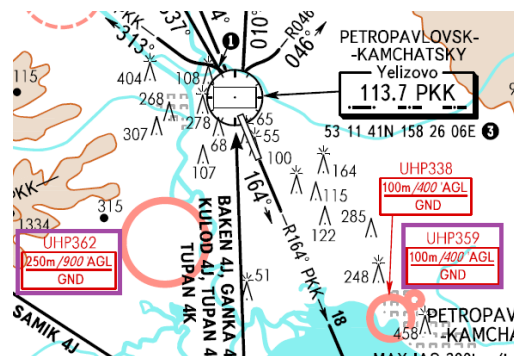
!! URGENT !!

Date: 5 September 2024
Subject: Petropavlovsk-Kamchatsky, Russia
Yelizovo (UHPP)

Restricted Airspace added

The Jeppesen Airway Manual contains partly outdated information on instrument approach procedure charts (dated 12 MAY 23) for Yelizovo (UHPP) airport at Petropavlovsk-Kamchatsky, Russia. The following changes of Russia AIRAC AMDT 09/24 (effective 05 SEP 24) could not be incorporated in time:

- New prohibited area: UH(P)-359.
- New prohibited area: UH(P)-362.



The updated charts will be made available on www.jeppesen.com as soon as they become available.

**WE STRONGLY URGE YOU TO MAKE THIS INFORMATION AVAILABLE
TO APPROPRIATE CREW MEMBERS IMMEDIATELY!**

This Chart Alert is also posted on the Jeppesen Web site: [Notices and Alerts](#).

If you have any questions concerning this Chart Alert, please contact Chart Support at:

Support Portal: support.jeppesen.com

E-mail: ChartSupport@boeing.com

Chart Alerts are published to advise users of significant issues in Jeppesen chart data which may affect aircraft operations. Chart Alerts are distributed to chart Users and are also available on Jeppesen's Web site.