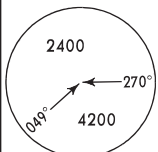


RWY	USABLE LENGTHS			WIDTH
	LANDING BEYOND Threshold	GLIDE SLOPE	TAKE-OFF	
07				77'
25				23m

Std/State	TAKE-OFF			
	RCLM		Adequate Vis Ref	
	DAY	NIGHT	DAY	NIGHT
A	R/V400m	NA	R/V500m	NA
B				
C	NOT APPLICABLE			
D				

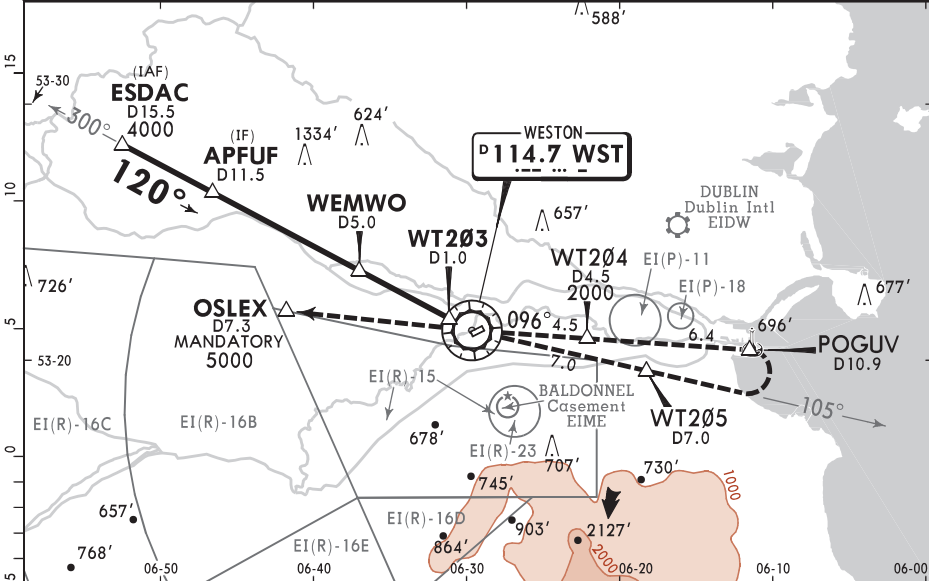
*ATIS <b>118.875</b>	DUBLIN Approach <b>121.1</b>	DUBLIN Control South <b>120.755</b>	*WESTON Tower <b>122.4</b>	*Ground <b>119.425</b>
VOR WST <b>114.7</b>	Final Aptch Crs <b>120°</b>	WEMWO <b>1800'</b> (1644')	MDA(H) Refer to Minimums	Apt Elev 156'



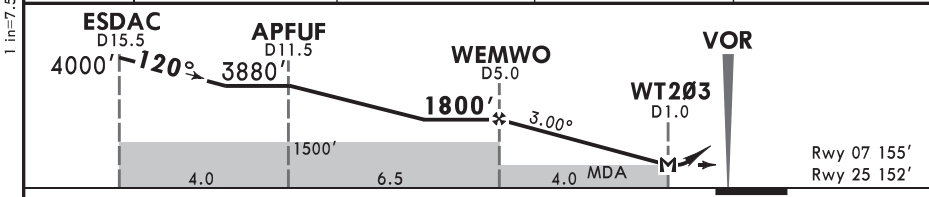
**MISSED APCH:** At VOR turn **LEFT** and climb on R-096 to 5000'. Cross WT204/D4.5 at or above 2000'. At POGUV/D10.9 turn **RIGHT** to intercept R-105, continue to WT205/D7.0 and VOR. At VOR route to OSLEX and initiate an ILS approach to EIDW Rwy 10L or as instructed by ATC.

Alt Set: hPa Apt Elev: 6 hPa Trans level: By ATC Trans alt: 5000'

- DME required.
- Expect visual landing instructions from ATC Weston.
- Non-RNAV Actf must request DATCC to radar vector to the start point of the approach.
- Procedure is available only while EIDW is utilising Rwy 10 operations.
- For MAP expect Dublin Control South 120.755.



WST DME	5.0	4.0	3.0	2.0
ALTITUDE	1800'	1495'	1175'	860'



Gnd speed-Kts	70	90	100	120	140	160		WST		WST	5000'
Descent Angle	3.00°	372	478	531	637	743	849	114.7	LT	R-096	

MAP at WT203/D1.0

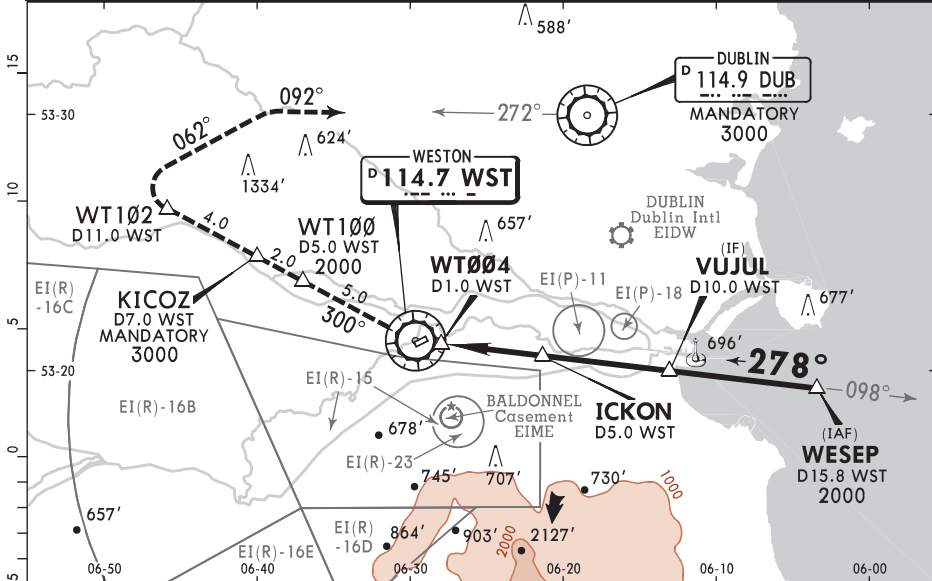
**Std/State** CIRCLE-TO-LAND

No circling Southeast of Rwy 07/25 between R-112 and R-203.

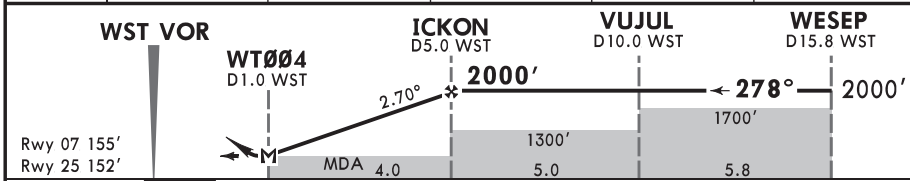
	Max Kts	MDA(H)	
A	100	670' (514')	V1500m
B	135	690' (534')	V1600m
C			
D			

NOT APPLICABLE

*ATIS <b>118.875</b>	DUBLIN Approach <b>121.1</b>		*WESTON Tower <b>122.4</b>		*Ground <b>119.425</b>
VOR WST <b>114.7</b>	Final Apch Crs <b>278°</b>	ICKON <b>2000'</b> (1844')	MDA(H) Refer to Minimums	Apt Elev 156'	
<b>MISSED APCH:</b> Climb on WST VOR R-300. Cross WT100/D5.0 WST 2000' or above. Cross KICOZ/D7.0 WST at 3000'. At WT102/D11.0 WST turn <b>RIGHT</b> to intercept DUB VOR R-272 and continue to DUB VOR to initiate an ILS approach to EIDW Rwy 28L or as instructed by ATC.					<p>MSA WST VOR</p>
Alt Set: hPa    Apt Elev: 6 hPa    Trans level: By ATC    Trans alt: 5000'					
1. DME required. 2. Expect visual landing instructions from ATC Weston. 3. Non-RNAV Acft must request DATCC to radar vector to the start point of the approach. 4. Procedure is available only while EIDW is utilising Rwy 28 or Rwy 34 operations.					



WST DME	1.0	2.0	3.0	4.0	5.0
ALTITUDE	855'	1140'	1425'	1715'	2000'



Gnd speed-Kts	70	90	100	120	140	160	<b>2000'</b> on <b>114.7</b> <b>WST</b> <b>R-300</b> <b>WT100</b> D5.0 WST	
Descent Angle	2.70°	334	430	478	573	669		764
MAP at WT004/D1.0 WST								

<b>Std/State</b>		CIRCLE-TO-LAND					
No circling Southeast of Rwy 07/25 between WST VOR R-112 and WST VOR R-203.							
	Max Kts	MDA(H)					
A	100	660'(504')					V1500m
B	135	690'(534')					V1600m
C		NOT APPLICABLE					
D		NOT APPLICABLE					