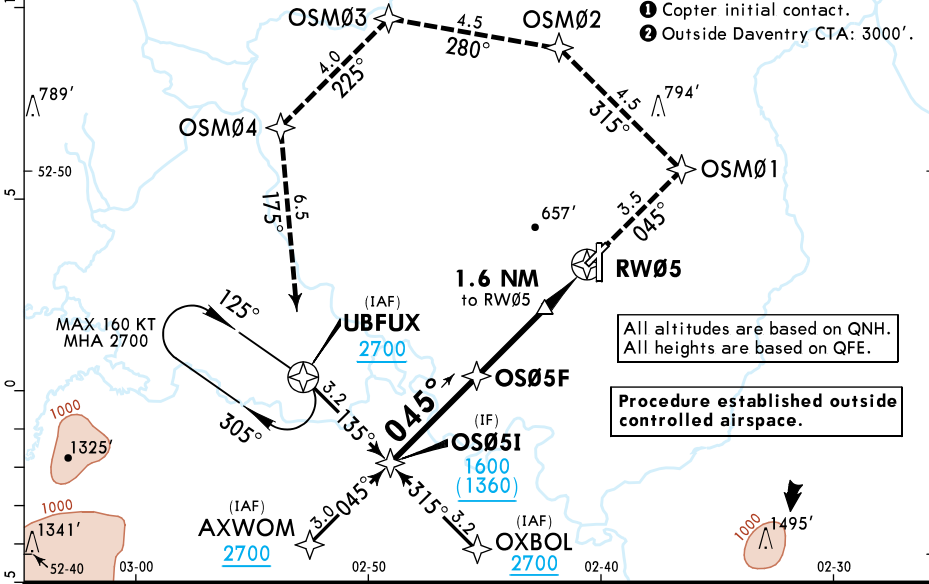
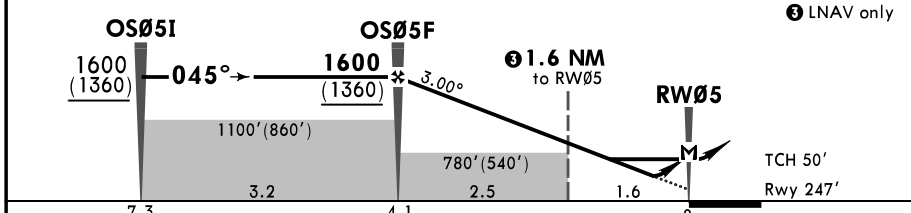


*ATIS 341.650	*SHAWBURY Approach 269.425	*SHAWBURY Low Level 369.175	*SHAWBURY Director 373.225	*SHAWBURY Talkdown (PAR) 377.775	*SHAWBURY Information 121.580X	*SHAWBURY Tower 362.0
RNAV	Final Apch Crs 045°	OS05F 1600 (1360')	LNAV/VNAV DA(H) Refer to Minimums	Apt Elev 248'	Rwy 247'	3900 MSA ARP
MISSED APCH: Continuous climb to 2700' (2460'). Initially climb STRAIGHT AHEAD to OSM01, then turn LEFT to OSM02, LEFT to OSM03, LEFT to OSM04 and LEFT to UBFUX to join the hold.						
RNP Apch Alt Set: hPa Rwy Elev: 9 hPa Trans level: By ATC Trans alt: 6000'						

1. For uncompensated LNAV-VNAV systems, procedure not authorized below -15°C.
2. Procedure restricted to MAX 160 KT.



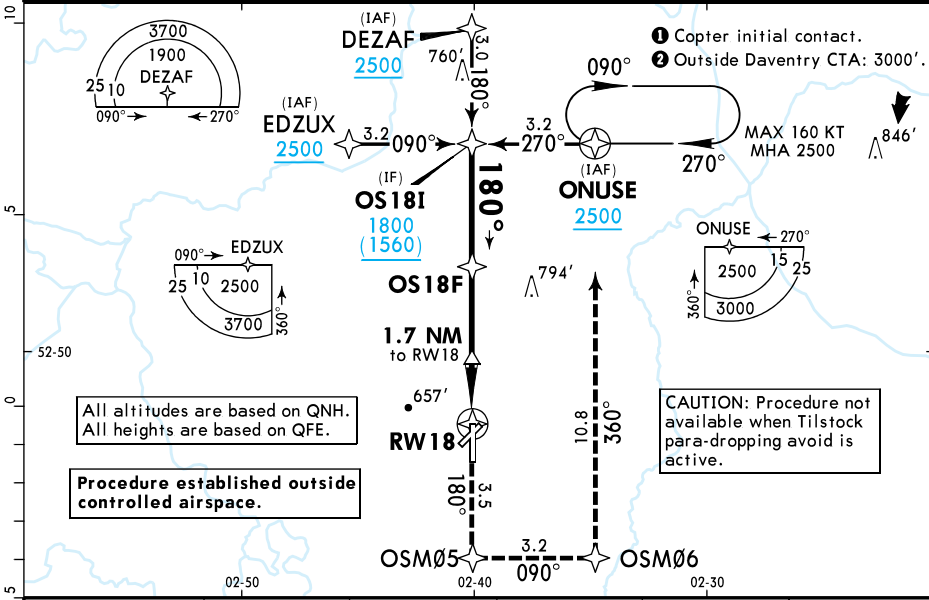
DIST to RW05	4.0	3.0	2.0	1.6	1.0
ALT(H)	1570'(1330')	1250'(1010')	930'(690')	810'(570')	620'(380')



Gnd speed-Kts	70	90	100	120	140	160	PAPI	OSM01 ↑	LT	OSM02	
Glide Path Angle	3.00°	372	478	531	637	743					849
MAP at RW05											
OS05F to MAP	4.1	3:31	2:44	2:28	2:03	1:45					1:32

Military		STRAIGHT-IN LANDING		CIRCLE-TO-LAND	
LNAV/VNAV		LNAV		Max Kts	
DA(H) A: 520'(280') C: 560'(320') B: 530'(290')		MDA(H) 620'(380')		MDA(H)	
A	V1300m	V1700m		100	960'(720') V1700m
B				135	
C	V1400m			180	1190'(950') V2400m
D	NOT APPLICABLE	NOT APPLICABLE		D	NOT APPLICABLE
E				E	

*ATIS 341.650	*SHAWBURY Approach 269.425	*SHAWBURY Low Level 369.175	*SHAWBURY Director 373.225	*SHAWBURY Talkdown (PAR) 377.775	*SHAWBURY Information 121.580X	*SHAWBURY Tower 362.0	
RNAV	Final Apch Crs 180°	OS18F 1600 (1360')	LNAV/VNAV DA(H) Refer to Minimums	Apt Elev 248' Rwy 242'			
MISSED APCH: Continuous climb to 2500' (2260'). Initially climb STRAIGHT AHEAD to OSM05, then turn LEFT to OSM06 and LEFT to ONUSE to join the hold.							
RNP Apch Alt Set: hPa Rwy Elev: 9 hPa Trans level: By ATC Trans alt: 6000' ② 1. For uncompensated LNAV-VNAV systems, procedure not authorized below -15°C. 2. Procedure restricted to MAX 160 KT.							

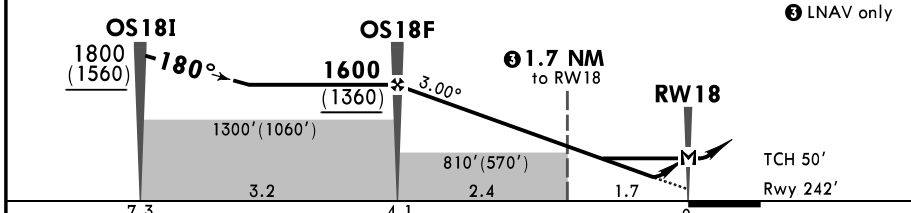


All altitudes are based on QNH.
All heights are based on QFE.

Procedure established outside controlled airspace.

CAUTION: Procedure not available when Tilstock para-dropping avoid is active.

DIST to RW18	4.0	3.0	2.0	1.7	1.0
ALT(H)	1570'(1330')	1250'(1010')	930'(690')	830'(590')	610'(370')

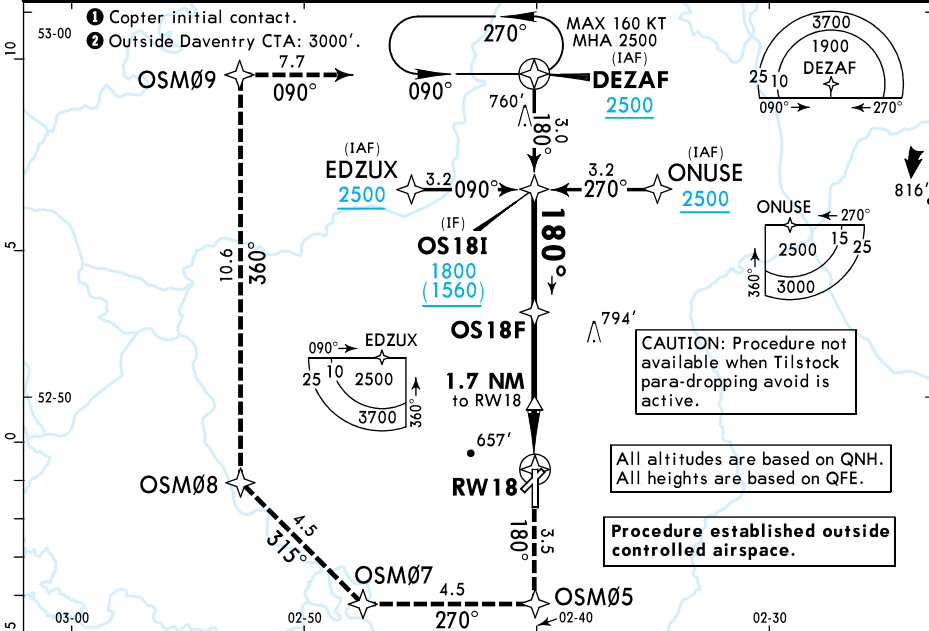


Gnd speed-Kts	70	90	100	120	140	160	HIALS PAPI PAPI 	OSM05 ↑ LT OSM06
Glide Path Angle 3.00°	372	478	531	637	743	849		
MAP at RW18								
OS18F to MAP	4.1	3:31	2:44	2:03	1:45	1:32		

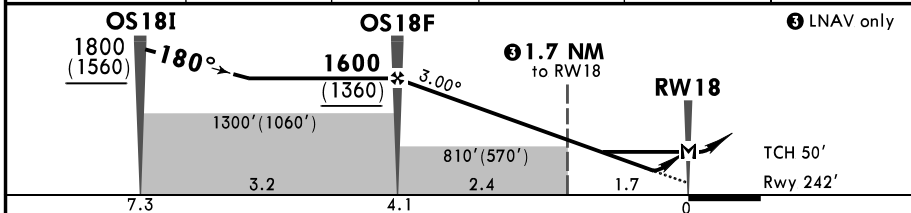
Military		STRAIGHT-IN LANDING		CIRCLE-TO-LAND	
LNAV/VNAV		LNAV		CIRCLE-TO-LAND	
DA(H) A: 620'(380') C: 640'(400') B: 630'(390')		MDA(H) 740'(500')		Max Kts MDA(H)	
ALS out		ALS out			
A	V1000m	V1700m	V1500m	V2300m	960'(720')
B					135
C	V1100m	V1800m			180
D	NOT APPLICABLE		NOT APPLICABLE		1190'(950')
E	NOT APPLICABLE		NOT APPLICABLE		V2400m

MIPS MIL

*ATIS 341.650	*SHAWBURY Approach 269.425	*SHAWBURY Low Level 369.175	*SHAWBURY Director 373.225	*SHAWBURY Talkdown (PAR) 377.775	*SHAWBURY Information 121.580X	*SHAWBURY Tower 362.0
RNAV	Final Apch Crs 180°	OS18F 1600 (1360')	LNAV/VNAV DA(H) Refer to Minimums	Apt Elev 248'	Rwy 242'	<p>3900</p> <p>MSA ARP</p>
<p>MISSED APCH: Continuous climb to 2500' (2260'). Initially climb STRAIGHT AHEAD to OSM05, turn RIGHT to OSM07, then turn RIGHT to OSM08, RIGHT to OSM09, and RIGHT to DEZAF to join the hold.</p>						
<p>RNP Apch Alt Set: hPa Rwy Elev: 9 hPa Trans level: By ATC Trans alt: 6000' </p> <p>1. For uncompensated LNAV-VNAV systems, procedure not authorized below -15°C. 2. Procedure restricted to MAX 160 KT.</p>						



DIST to RW18	4.0	3.0	2.0	1.7	1.0
ALT(H)	1570'(1330')	1250'(1010')	930'(690')	830'(590')	610'(370')

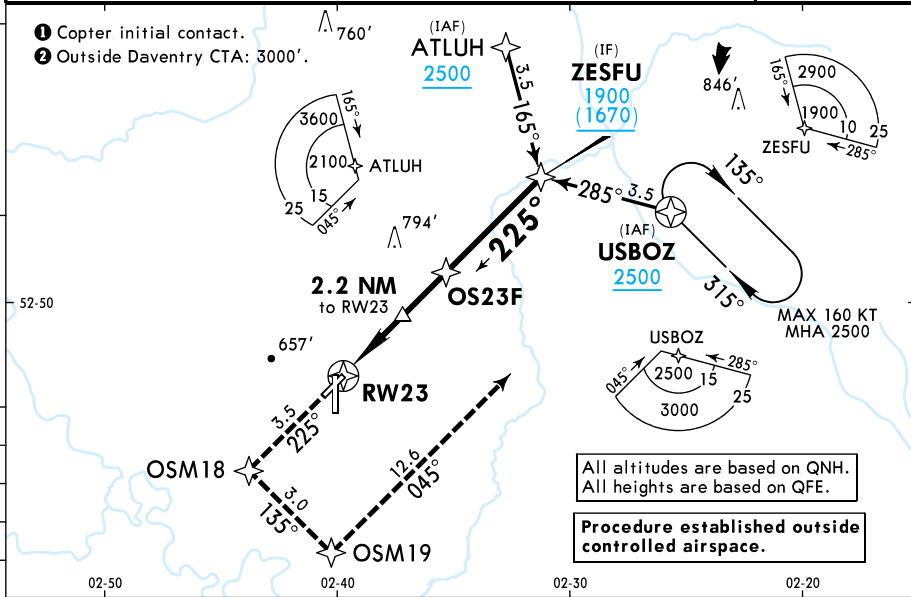


Gnd speed-Kts	70	90	100	120	140	160		
Glide Path Angle	3.00°	372	478	531	637	743		
MAP at RW18								
OS18F to MAP	4.1	3:31	2:44	2:28	2:03	1:45	1:32	

Military				STRAIGHT-IN LANDING		CIRCLE-TO-LAND	
LNAV/VNAV		LNAV					
DA(H) A: 620'(380') C: 640'(400') B: 630'(390')		MDA(H) 740'(500')		ALS out		Max Kts MDA(H)	
A	V1000m	V1700m	V1500m	V2300m	100	960'(720')	V2300m
B	V1100m	V1800m			135		
C					180	1190'(950')	V2400m
D	NOT APPLICABLE		NOT APPLICABLE		D	NOT APPLICABLE	
E	NOT APPLICABLE		NOT APPLICABLE		E	NOT APPLICABLE	

*ATIS 341.650	*SHAWBURY Approach 269.425	*SHAWBURY Low Level 369.175	*SHAWBURY Director 373.225	*SHAWBURY Talkdown (PAR) 377.775	*SHAWBURY Information 121.580X	*SHAWBURY Tower 362.0
RNAV	Final Apch Crs 225°	OS23F 1500 (1270')	LNAV/VNAV DA(H) Refer to Minimums	Apt Elev 248' Rwy 238'		
MISSED APCH: Continuous climb to 2500' (2270'). Initially climb STRAIGHT AHEAD to OSM18, then turn LEFT to OSM19 and LEFT to USBOZ to join the hold.						
RNP Apch Alt Set: hPa Rwy Elev: 9 hPa Trans level: By ATC Trans alt: 6000' Ⓢ 1. For uncompensated LNAV-VNAV systems, procedure not authorized below -15°C. 2. Procedure restricted to MAX 160 KT.						

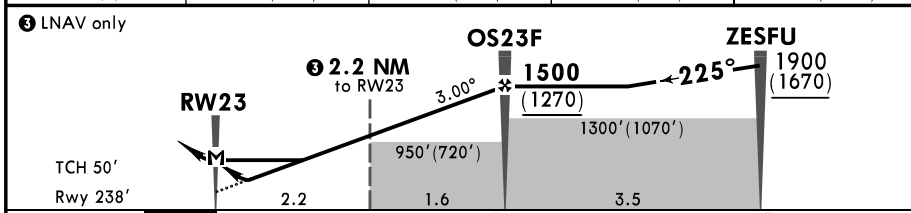
- ① Copter initial contact.
- ② Outside Daventry CTA: 3000'.



All altitudes are based on QNH.
All heights are based on QFE.

Procedure established outside controlled airspace.

DIST to RW23	1.0	2.0	2.2	3.0
ALT(H)	610'(380')	930'(700')	990'(760')	1240'(1010')

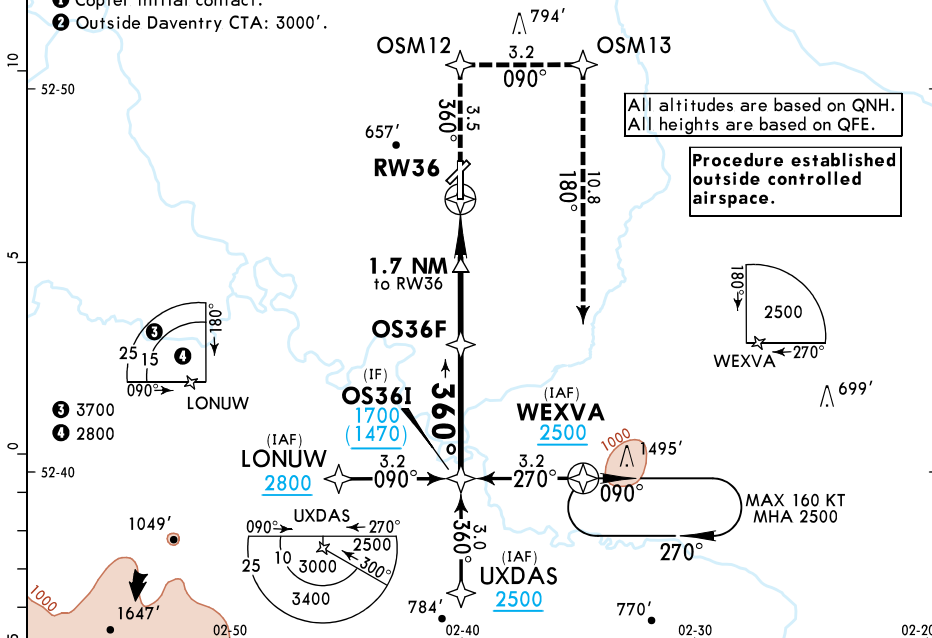


Gnd speed-Kts	70	90	100	120	140	160	PAPI		
Glide Path Angle	3.00°	372	478	531	637	743			849
MAP at RW23									
OS23F to MAP	3.8	3:15	2:32	2:17	1:54	1:38	1:26		

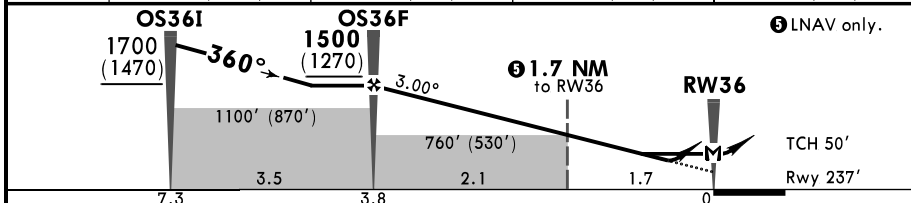
Military		STRAIGHT-IN LANDING		CIRCLE-TO-LAND	
LNAV/VNAV		LNAV		CIRCLE-TO-LAND	
DA(H) A: 590'(360') C: 610'(380') B: 600'(370')		MDA(H) 710'(480')		Max Kts	
A	V1600m	V2200m		100	960'(720') V2200m
B	V1700m			135	
C				180	1190'(950') V2400m
D	NOT APPLICABLE	NOT APPLICABLE		D	NOT APPLICABLE
E				E	

*ATIS 341.650	*SHAWBURY Approach 269.425	*SHAWBURY Low Level 369.175	*SHAWBURY Director 373.225	*SHAWBURY Talkdown (PAR) 377.775	*SHAWBURY Information 121.58X	*SHAWBURY Tower 362.0
RNAV	Final Apch Crs 360°	OS36F 1500 (1270')	LNAV/VNAV DA(H) Refer to Minimums	Apt Elev 248'	Rwy 237'	3900
MISSED APCH: Continuous climb to 2500' (2270'). Initially climb STRAIGHT AHEAD to OSM12, then turn RIGHT to OSM13 and RIGHT to WEXVA to join the hold.						
Alt Set: hPa Rwy Elev: 9 hPa Trans level: By ATC Trans alt: 6000' (2) 1. For uncompensated LNAV/VNAV systems, procedure not authorized below -15°C. 2. Procedure restricted to MAX 160 KT.						

- 1** Copter initial contact.
- 2** Outside Daventry CTA: 3000'.



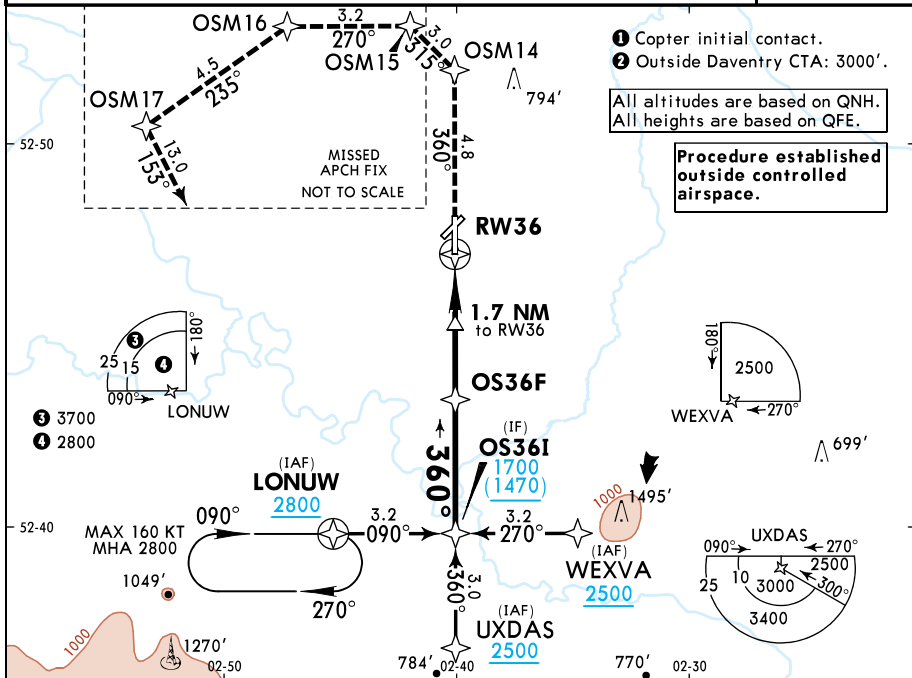
DIST to RW36	3.0	2.0	1.7	1.0
ALT(H)	1240' (1010')	920' (690')	830' (600')	610' (380')



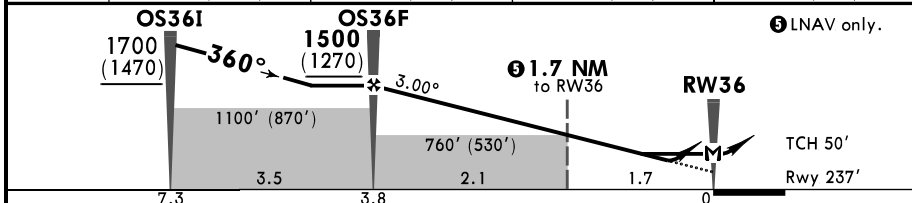
Gnd speed-Kts	70	90	100	120	140	160	HIALS PAPI : PAPI OSM12 RT OSM13
Glide Path Angle	3.00°	3.72	4.78	5.31	6.37	7.43	
MAP at RW36							
OS36F to MAP	3.8	3:15	2:32	2:17	1:54	1:38	1:26

Military				STRAIGHT-IN LANDING				CIRCLE-TO-LAND				
DA(H)		LNAV/VNAV		LNAV		MDA(H)		Max Kts		MDA(H)		
A: 510' (280')		B: 520' (290')		C: 540' (310')		620' (390')		100		960' (720') V1800m		
ALS out		ALS out		ALS out		ALS out		135		1190' (950') V2400m		
A	V900m	V1300m		V1400m		V1800m		180		NOT APPLICABLE		
B	V1000m	V1400m		V1400m		V1800m		E		NOT APPLICABLE		
C	NOT APPLICABLE				NOT APPLICABLE				D		NOT APPLICABLE	
D	NOT APPLICABLE				NOT APPLICABLE				E		NOT APPLICABLE	

*ATIS 341.650	*SHAWBURY Approach ① 269.425	*SHAWBURY Low Level 369.175	*SHAWBURY Director 373.225	*SHAWBURY Talkdown (PAR) 377.775	*SHAWBURY Information 121.58X	*SHAWBURY Tower 362.0
RNAV	Final Apch Crs 360°	OS36F 1500 (1270')	LNAV/VNAV DA(H) Refer to Minimums	Apt Elev 248'	Rwy 237'	3900
MISSED APCH: Continuous climb to 2800' (2570'). Initially climb STRAIGHT AHEAD to OSM14, then turn LEFT to OSM15, LEFT to OSM16, LEFT to OSM17 and LEFT to LONUW to join the hold.						
RNP Apch Alt Set: hPa Rwy Elev: 9 hPa Trans level: By ATC Trans alt: 6000' ②						MSA ARP
1. For uncompensated LNAV/VNAV systems, procedure not authorized below -15°C. 2. Procedure restricted to MAX 160 KT.						



DIST to RW36	3.0	2.0	1.7	1.0
ALT(H)	1240' (1010')	920' (690')	830' (600')	610' (380')



Gnd speed-Kts	70	90	100	120	140	160	HIALS PAPI PAPI	OSM14 ↑	LT	OSM15
Glide Path Angle	3.00°	3.72	4.78	5.31	6.37	7.43				
MAP at RW36										
OS36F to MAP	3.8	3:15	2:32	2:17	1:54	1:38	1:26			

Military				STRAIGHT-IN LANDING				CIRCLE-TO-LAND			
DA(H)		LNAV/VNAV		LNAV		LNAV		Max Kts		MDA(H)	
A: 500' (270')		B: 510' (280')		C: 530' (300')		MDA(H) 620' (390')		100		960' (720')	
B		V1300m		V1400m		V1800m		135		V1800m	
C		V1400m						180		V2400m	
NOT APPLICABLE				NOT APPLICABLE				NOT APPLICABLE			