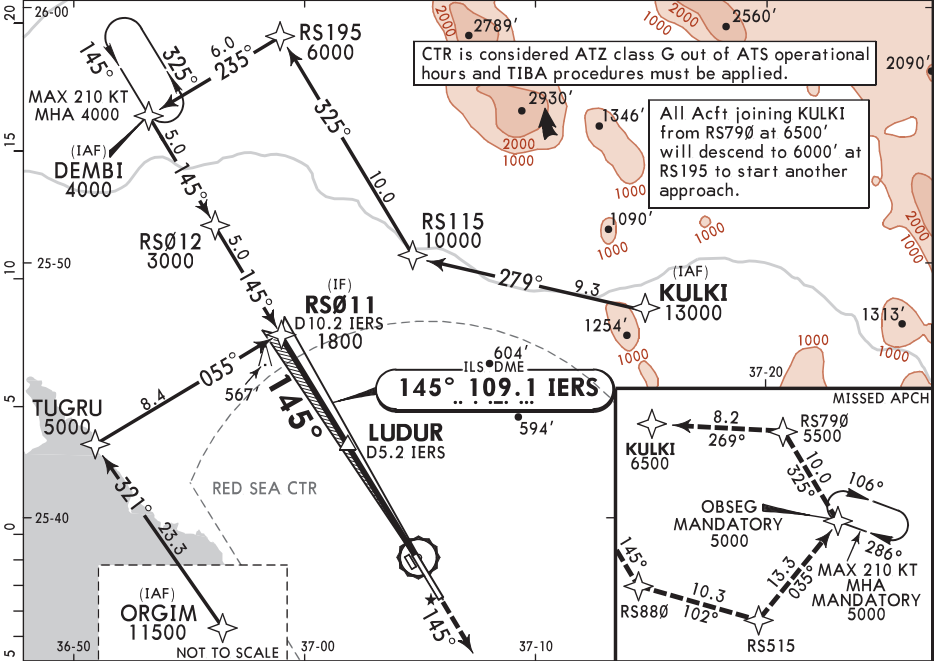
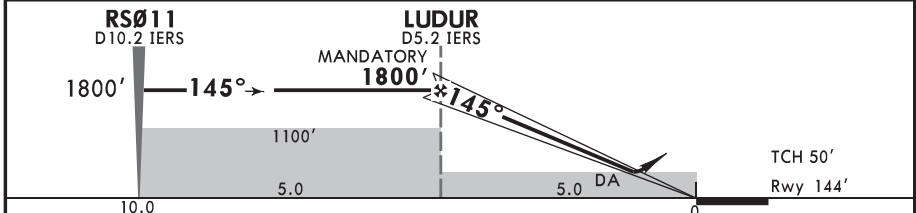


*ATIS 126.550		TIBA 122.8		FRS (Call 15 min before ARR time) 133.5	*RED SEA Tower (Call 15 min before ARR time) 118.2
LOC IERS 109.1	Final Apch Crs 145°	LUDUR MANDATORY 1800' (1656')	DA(H) Refer to Minimums	Apt Elev 164' Rwy 144'	<p>5800</p> <p>MSA ARP</p>
<p>MISSED APCH: Proceed on course 145° to RS880, then turn LEFT continuing to climb on track 102° to RS515. Continue on track 035° to OBSEG at 5000' and hold or, under pilot discretion, continue to KULKI at or above 6500' via RS790 for another approach or divert.</p> <p>RNP Apch Alt Set: hPa Rwy Elev: 5 hPa Trans level: FL150 Trans alt: 13000'</p> <p>1. DME required. 2. Circling not authorized.</p>					



IERS DME	5.2	5.0	4.0	3.0	2.0	1.0
ALTITUDE	1800'	1740'	1410'	1100'	780'	460'



Gnd speed-KT	70	90	100	120	140	160	<p>ALS II PAPI</p>	<p>RS880 on 145°</p>
Gs	3.00°	372	478	531	637	743		

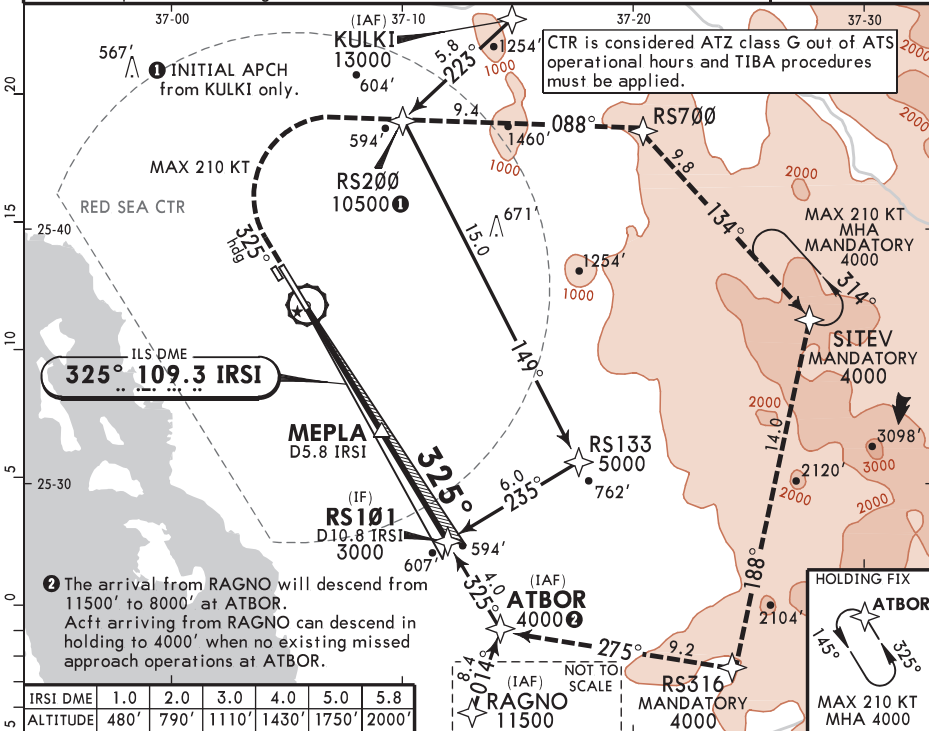
State		STRAIGHT-IN LANDING	
		ILS	
		DA(H) A: 371' (227') B: 381' (237') C: 393' (249') D: 407' (263')	
		ALS out	
A		R1200m	
B	R550m		
C		R1300m	
D	R600m		

OERS/RSI RED SEA INTL

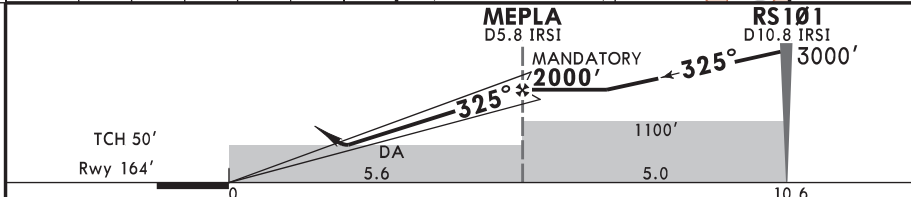
26 JUL 24 **(11-2)**

HANAK, SAUDI ARABIA ILS Rwy 33R

*ATIS 126.550		TIBA 122.8		FRS (Call 15 min before ARR time) 133.5	*RED SEA Tower (Call 15 min before ARR time) 118.2
LOC IRSI 109.3	Final ApcH Crs 325°	MEPLA MANDATORY 2000' (1836')		DA(H) Refer to Minimums	Apt Elev 164' Rwy 164'
MISSED APCH: Climb to 900' on heading 325°. Turn RIGHT continuing to climb direct to RS200 and proceed on track 088° to RS700. Track 134° to SITEV at 4000' and hold or, under pilot discretion, continue to ATBOR via RS316. MAX 210 KT.					
RNP ApcH	Alt Set: hPa	Rwy Elev: 6 hPa	Trans level: FL150	Trans alt: 13000'	
1. DME required. 2. Circling not authorized.					MSA ARP



IRSI DME	1.0	2.0	3.0	4.0	5.0	5.8
ALTITUDE	480'	790'	1110'	1430'	1750'	2000'



Gnd speed-KT	70	90	100	120	140	160	
Gs	3.00°	372	478	531	637	743	849

ALSF-II
PAPI

210 KT MAX

900' on **325°** hdg

State STRAIGHT-IN LANDING
ILS
DA(H) A: **373'**(209') B: **384'**(220') C: **396'**(232') D: **409'**(245')

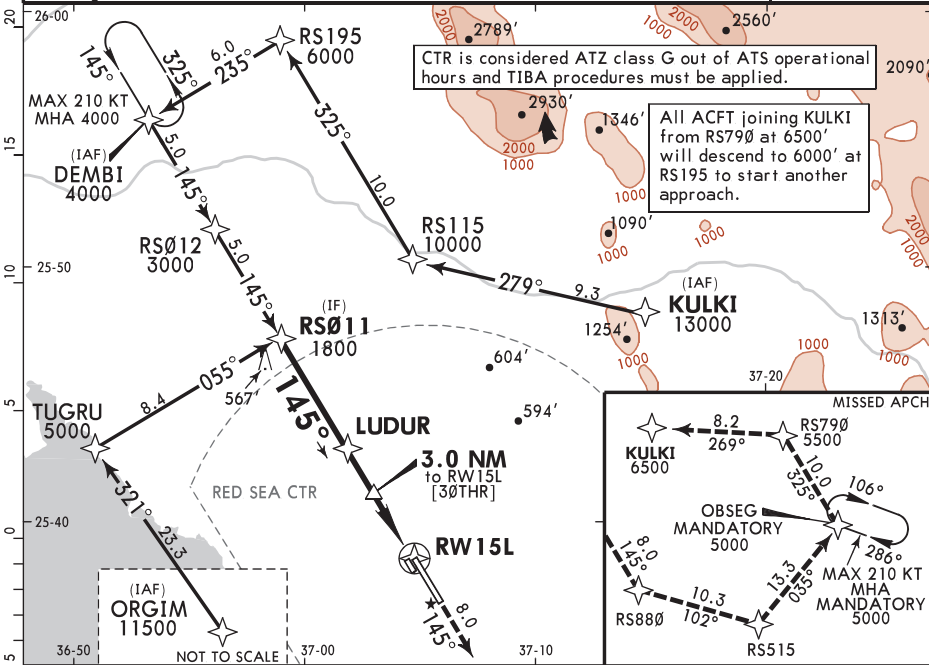
ALS out	
A	R1200m
B	R550m
C	R1300m
D	R1300m

PANS OPS

CHANGES: New procedure.

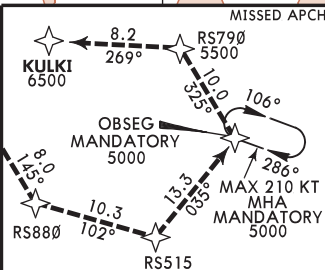
© JEPPESEN, 2024. ALL RIGHTS RESERVED.

*ATIS 126.550		TIBA 122.8	FRS (Call 15 min before ARR time) 133.5	*RED SEA Tower (Call 15 min before ARR time) 118.2
RNAV	Final Apch Crs 145°	LUDUR MANDATORY 1800' (1656')	MDA(H) 610' (466')	Apt Elev 164' Rwy 144'
MISSED APCH: Proceed on course 145° to RS880, then turn LEFT continuing to climb on track 102° to RS515. Continue on track 035° to OBSEG at 5000' and hold or, under pilot discretion, continue to KULKI at or above 6500' via RS790 for another approach or divert.				
RNP Apch	Alt Set: hPa	Rwy Elev: 5 hPa	Trans level: FL150	
Circling not authorized.				MSA ARP

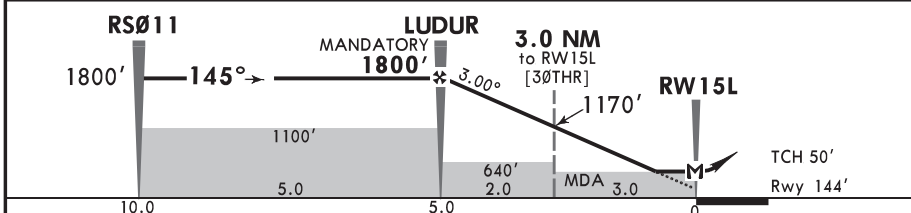


CTR is considered ATZ class G out of ATS operational hours and TIBA procedures must be applied.

All ACFT joining KULKI from RS790 at 6500' will descend to 6000' at RS195 to start another approach.



DIST to THR	5.0	4.0	3.0	2.0
ALTITUDE	1800'	1470'	1170'	840'



Gnd speed-KT	70	90	100	120	140	160
Descent Angle 3.00°	372	478	531	637	743	849
MAP at RW15L						

State STRAIGHT-IN LANDING
LNAV
MDA(H) **610'** (466')

ALS out	
A	
B	
C	R1500m
D	R2200m

OERS/RSI

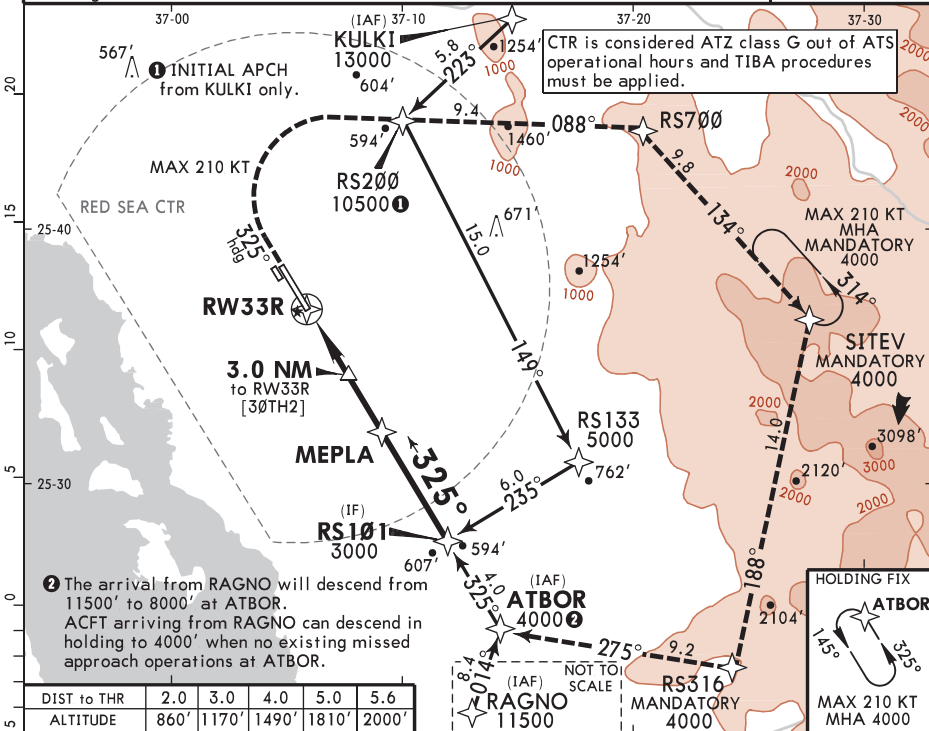
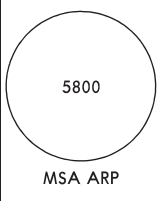
RED SEA INTL

26 JUL 24 **(12-2)**

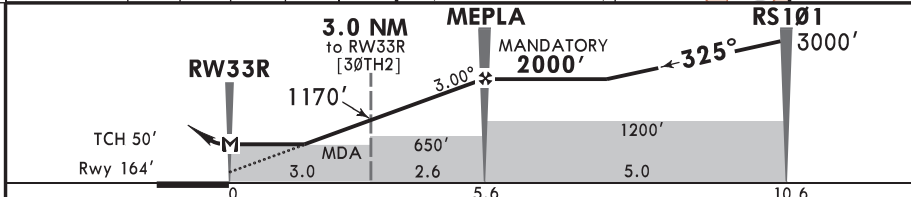
JEPPESEN HANAK, SAUDI ARABIA

RNP Rwy 33R

*ATIS 126.550		TIBA 122.8		FRS (Call 15 min before ARR time) 133.5	*RED SEA Tower (Call 15 min before ARR time) 118.2
RNAV	Final Apch Crs 325°	MEPLA MANDATORY 2000' (1836')	MDA(H) 610' (446')	Apt Elev 164' Rwy 164'	
MISSED APCH: Climb to 900' on heading 325°. Turn RIGHT continuing to climb direct to RS200 and proceed on track 088° to RS700. Track 134° to SITEV at 4000' and hold or, under pilot discretion, continue to ATBOR via RS316. MAX 210 KT.					
RNP Apch Alt Set: hPa Rwy Elev: 6 hPa Trans level: FL150 Trans alt: 13000'					
Circling not authorized.					



DIST to THR	2.0	3.0	4.0	5.0	5.6
ALTITUDE	860'	1170'	1490'	1810'	2000'



Gnd speed-KT	70	90	100	120	140	160	ALSIF-II PAPI	210 KT MAX	900'	325° on hdg
Descent Angle 3.00°	372	478	531	637	743	849				

MAP at RW33R

State STRAIGHT-IN LANDING

LNNAV

MDA(H) **610'**(446')

ALS out

A	R1400m	R2100m
B		
C		
D		

CHANGES: Communication, notes, wpt RSR33 renamed to RS133, SMA.

© JEPPESEN, 2023, 2024. ALL RIGHTS RESERVED.