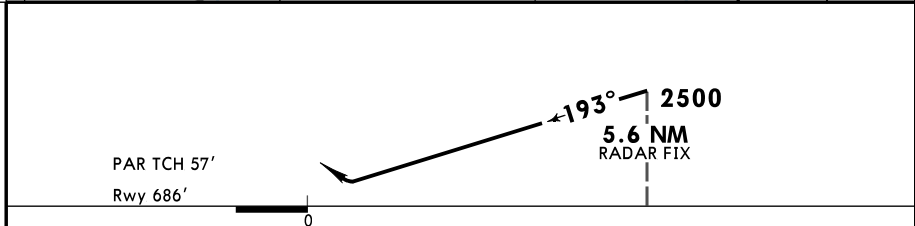
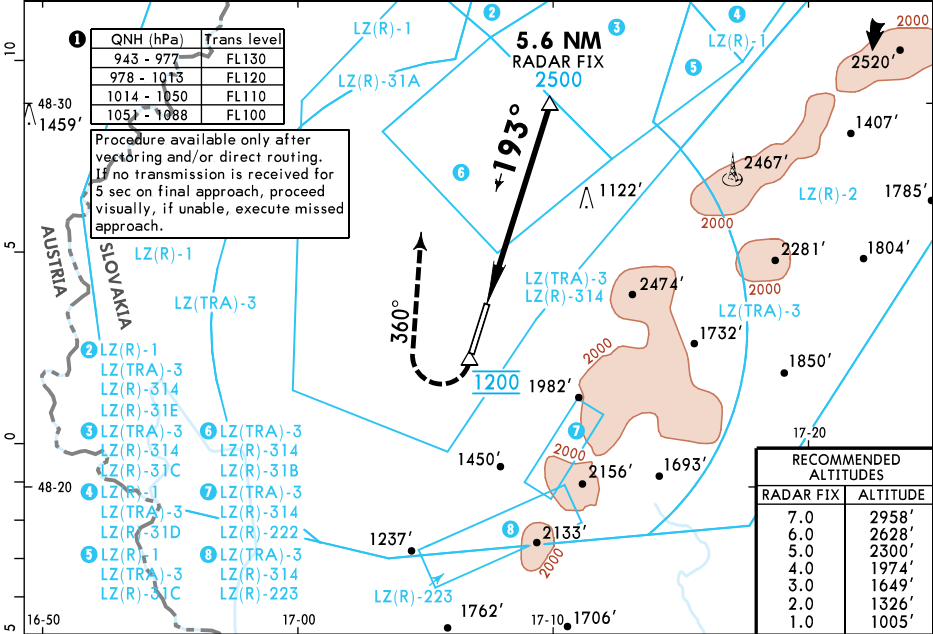


MALACKY Radar (APP)			MALACKY Precision		MALACKY Tower	
120.750	129.575	259.625	127.150		129.575	120.750
RADAR	Final Apch Crs 193°	5.6 NM RADAR FIX 2500 (1814')	DA(H) Refer to Minimums	Apt Elev 689'	Rwy 686'	3600
MISSED APCH: Climb STRAIGHT AHEAD, at 1200' turn RIGHT to course 360°, climbing to 4000', then as directed by Radar Controller. MAX 185 KT until established on course 360°. No turn before ARP.						
Alt Set: hPa		Rwy Elev: 25 hPa	Trans level: 1	Trans alt: 10000'		MSA ARP



Gnd speed-Kts	70	90	100	120	140	160	HIALS	185 KT	1200	RT on 360°
PAR GS	3.00°	372	478	531	637	743	PAPI	MAX		

Military	STRAIGHT-IN LANDING		CIRCLE-TO-LAND	
	DA(H) A: 951' (265') C: 971' (285') B: 963' (277') D: 982' (296')		Not authorized East of the extended Rwy centerline.	
PANS OPS MIL	ALS out		Max Kts	MDA(H)
	A	R600m	100	1120'(431') V1800m
	B	R1300m	135	1190'(501') V2800m
	C	R650m	180	1650'(961') V3600m
D	R1400m	205	1810'(1121') V4600m	
R750m when a Flight Director or Autopilot or HUD to DA is not used.				