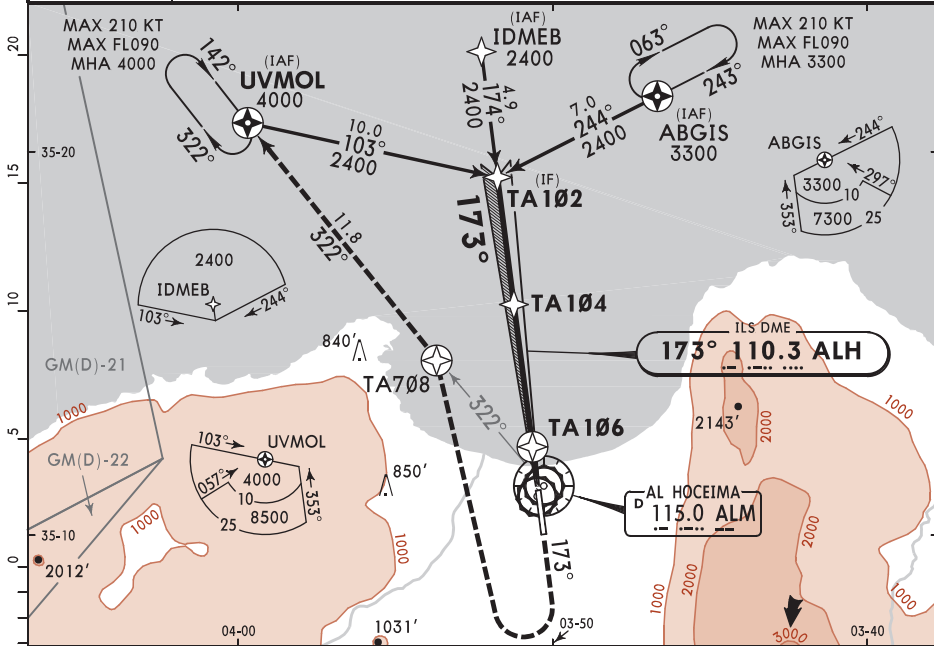
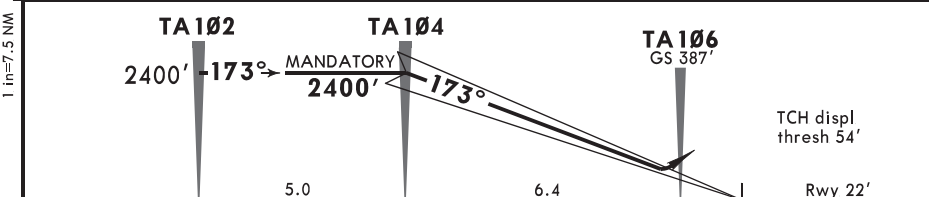


D-ATIS 118.250			*AL HOCEIMA Tower H24 from 20 JUN to 19 SEP 118.7 123.9		
LOC ALH <b>110.3</b>	Final Apch Crs <b>173°</b>	<b>TA104</b> MANDATORY <b>2400'</b> (2378')	ILS DA(H) Refer to Minimums	Apt Elev 112' Rwy 22'	TAA 25 NM IAF
<b>MISSED APCH:</b> Climb STRAIGHT AHEAD to 1300', then turn RIGHT (MAX 185 KT) direct to TA708, climbing to 2400' or above, then direct to UVMOL climbing to 4000' to join holding, or as directed. Refer to minimums for missed apch climb grads.					

RNP 1 required | Alt Set: hPa | Rwy Elev: 1 hPa | Trans level: By ATC | Trans alt: 6000'



TA102	TA104	TA106
2400'	2400'	GS 387'



ILS	1300'	185 KT	TA708
PAPI	↑	MAX	↑

PANS OPS	STRAIGHT-IN LANDING ILS	
	MACG MIN 4.0% (244'/NM) DA(H) <b>750'</b> (728')	MACG MIN 2.5% (152'/NM) DA(H) <b>1000'</b> (978')
	ALS out	ALS out
	A R1500m B R1500m C R2400m D R2400m	R1500m R2400m