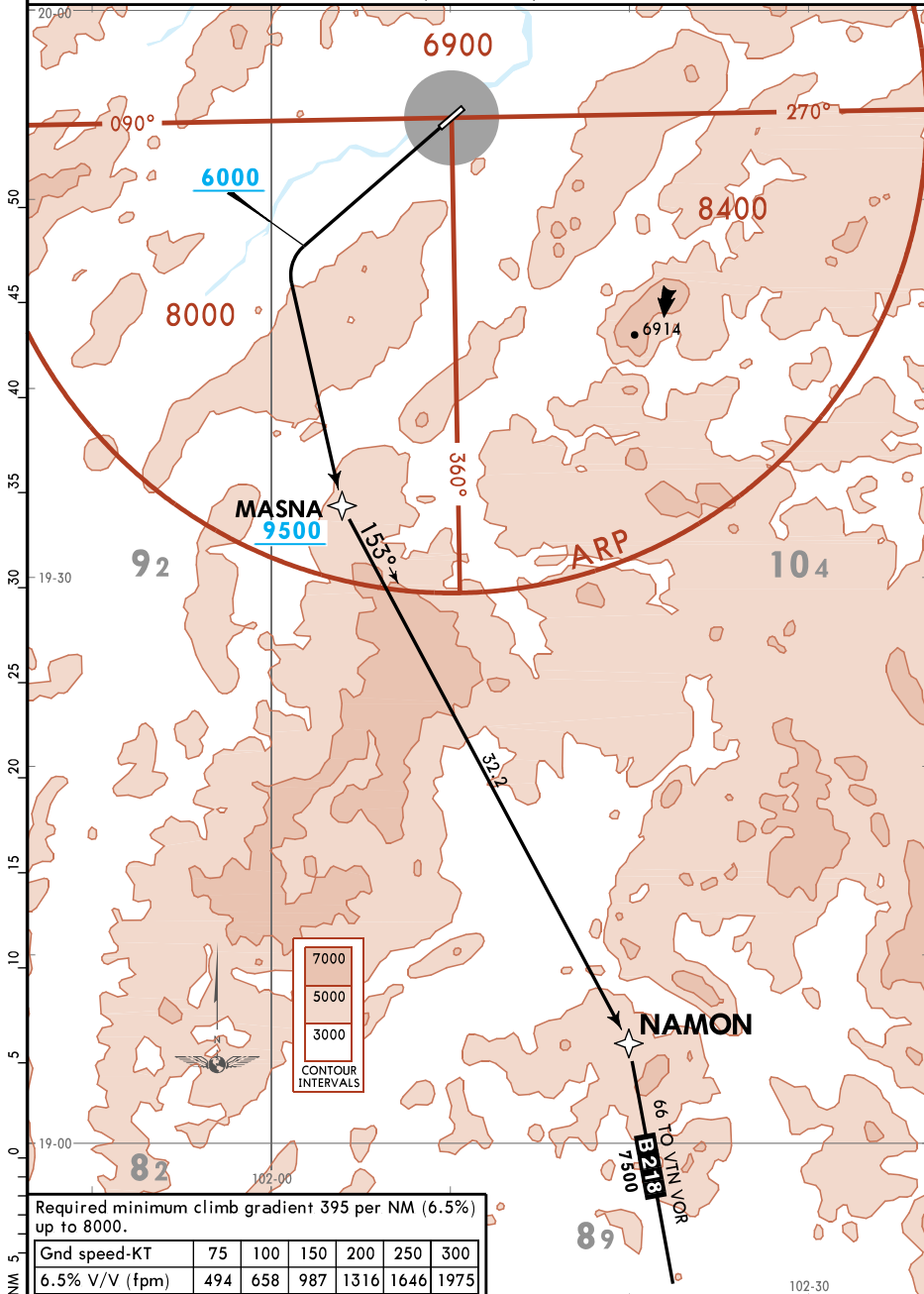


Apt Elev
 964 Trans alt: 11000

**NAMON 1D RNAV (GNSS) DEPARTURE (NAM 1D)
 (RWY 23)**



Required minimum climb gradient 395 per NM (6.5%) up to 8000.

Gnd speed-KT	75	100	150	200	250	300
6.5% V/V (fpm)	494	658	987	1316	1646	1975

INITIAL CLIMB

Climb on runway heading, at or above 6000, turn LEFT direct to MASNA, to NAMON.