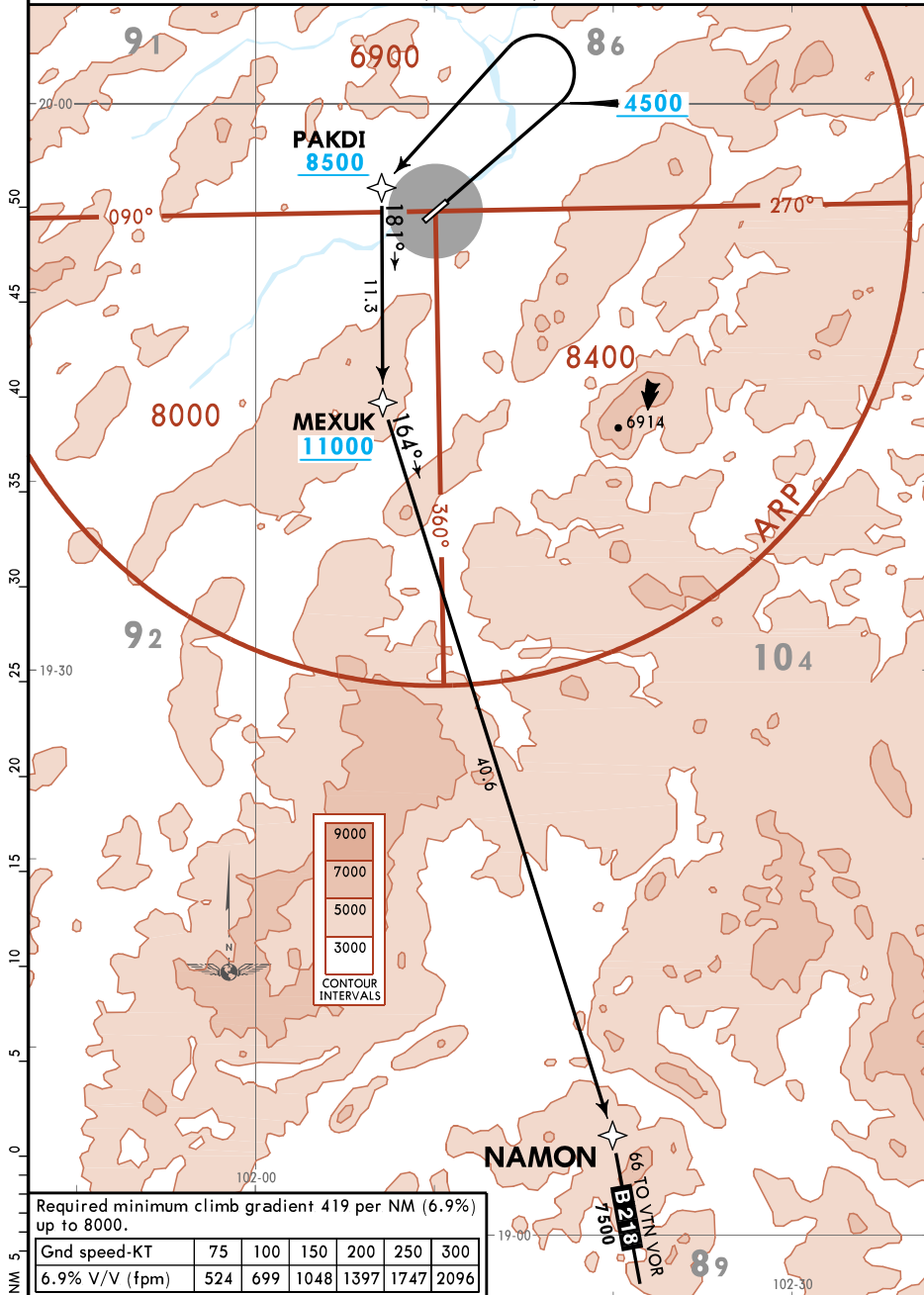


Apt Elev  
964

Trans alt: 11000

NAMON 1C RNAV (GNSS) DEPARTURE (NAM 1C)  
(RWY 05)



Required minimum climb gradient 419 per NM (6.9%)  
up to 8000.

Gnd speed-KT	75	100	150	200	250	300
6.9% V/V (fpm)	524	699	1048	1397	1747	2096

INITIAL CLIMB

Climb on runway heading, at or above 4500, turn LEFT direct to PAKDI, to MEXUK, to NAMON.