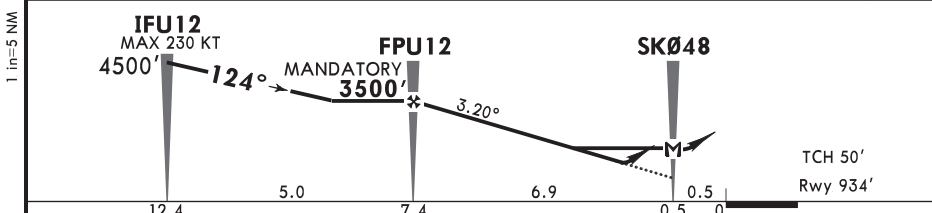
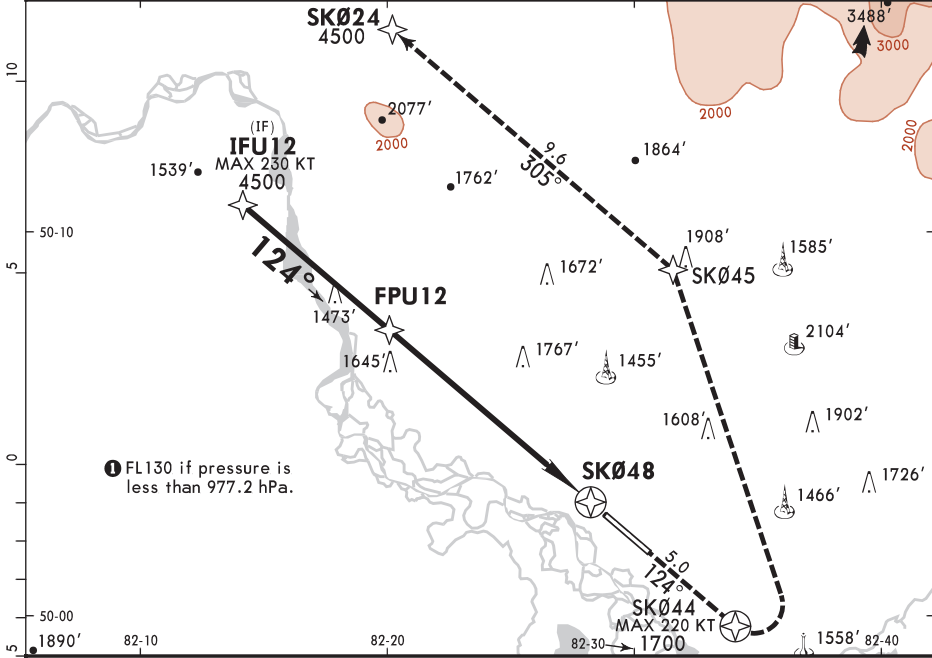


124.2 ATIS (Russian 127.7)			*UST-KAMENOGORSK Tower 130.1		
RNAV	Final Apch Crs 124°	FPU12 MANDATORY 3500' (2566')	LNAV/VNAV DA(H) Refer to Minimums	Apt Elev 942' Rwy 934'	7300 MSA ARP
MISSED APCH: Climb to SK044, turn LEFT direct to SK045, track to SK024, climbing to 4500'.					
Alt Set: hPa (MM on req) Rwy Elev: 34 hPa Trans level: FL120 1 Trans alt: 10000'					
RNP Apch Baro-VNAV not authorized below -44.6°C.					

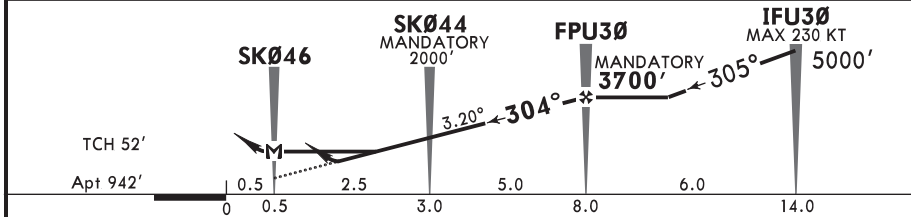
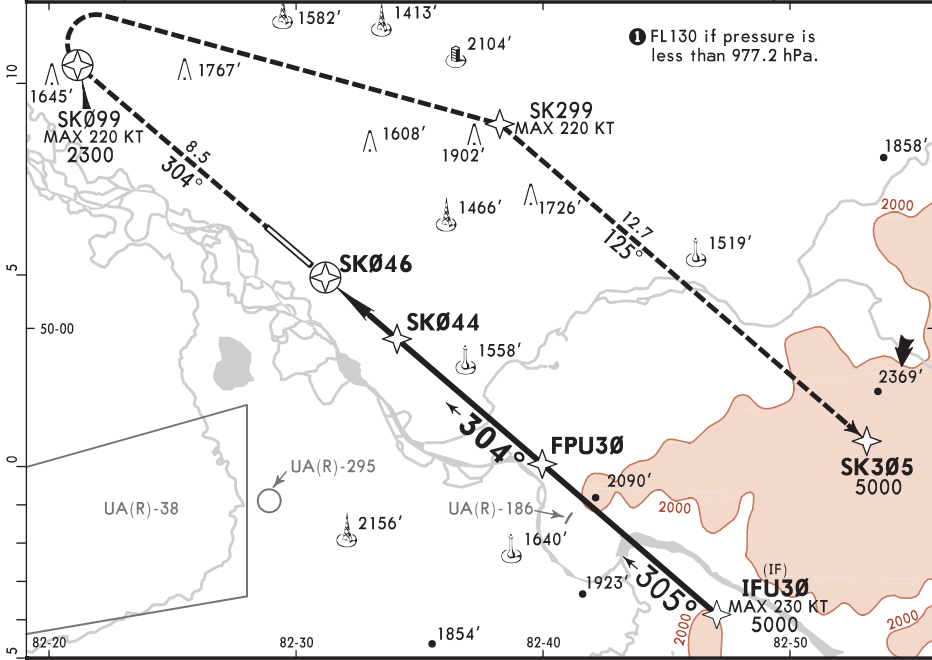


Gnd speed-Kts	70	90	100	120	140	160	HIALS PAPI	SK044 ↑	LT ↙	→ SK045
Glide Path Angle 3.20°	396	510	566	679	793	906				
MAP at SK048										

PANS OPS	LNAV/VNAV				LNAV CDFA		
	DA(H) A: 1220' (286')		C: 1240' (306')		DA/MDA(H) 1330' (396')		
	B: 1230' (296')		D: 1260' (326')		ALS out		
	A	ALS out		ALS out			
B	R750m	R1400m		R1100m		R1500m	
C							R1800m
D	R800m	R1500m					

1 VNAV DA(H) in lieu of MDA(H) depends on operator policy.

124.2 ATIS (Russian 127.7)			*UST-KAMENOGORSK Tower 130.1		
RNAV	Final Apch Crs 304°	FPU30 MANDATORY 3700' (2758')	LNAV/VNAV DA(H) Refer to Minimums	Apt Elev 942'	7300 MSA ARP
MISSED APCH: Climb to SK099, turn RIGHT direct to SK299, track to SK305, climbing to 5000'.					
Alt Set: hPa (MM on req) Apt Elev: 34 hPa Trans level: FL120 1 Trans alt: 10000'					
RNP Apch Baro-VNAV not authorized below -44.6°C.					



Gnd speed-Kts	70	90	100	120	140	160	HIALS	SK099	RT	SK299
Glide Path Angle	3.20°	396	510	566	679	793	906	↑	↻	→

LNAV/VNAV				LNAV CDFA			
DA(H) A: 1240'(298') C: 1270'(328') B: 1250'(308') D: 1300'(358')				DA/MDA(H) 1350'(408')			
ALS out				ALS out			
A	R750m	R1400m	R1200m		R1500m		
B	R800m	R1500m					
C	R900m	R1600m			R1900m		
D							

1 VNAV DA(H) in lieu of MDA(H) depends on operator policy.