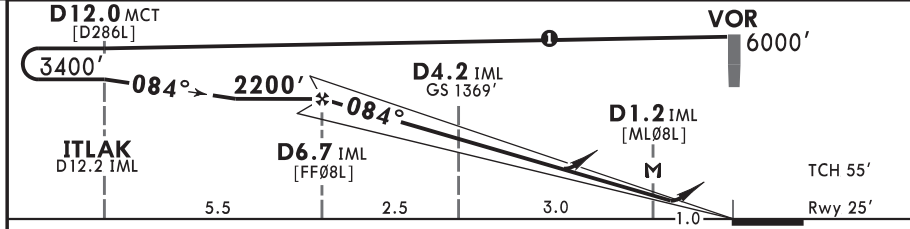
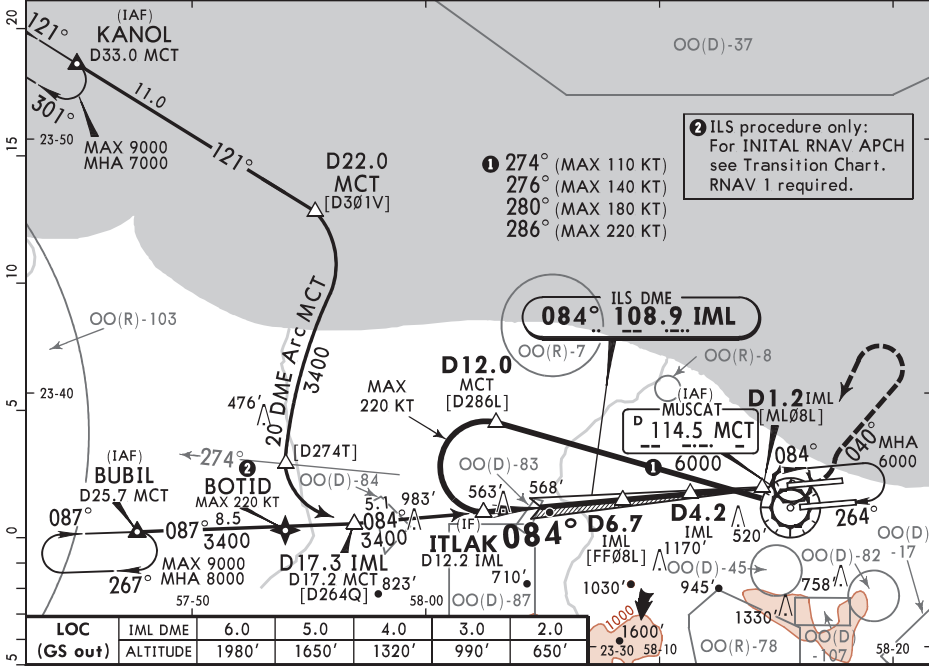


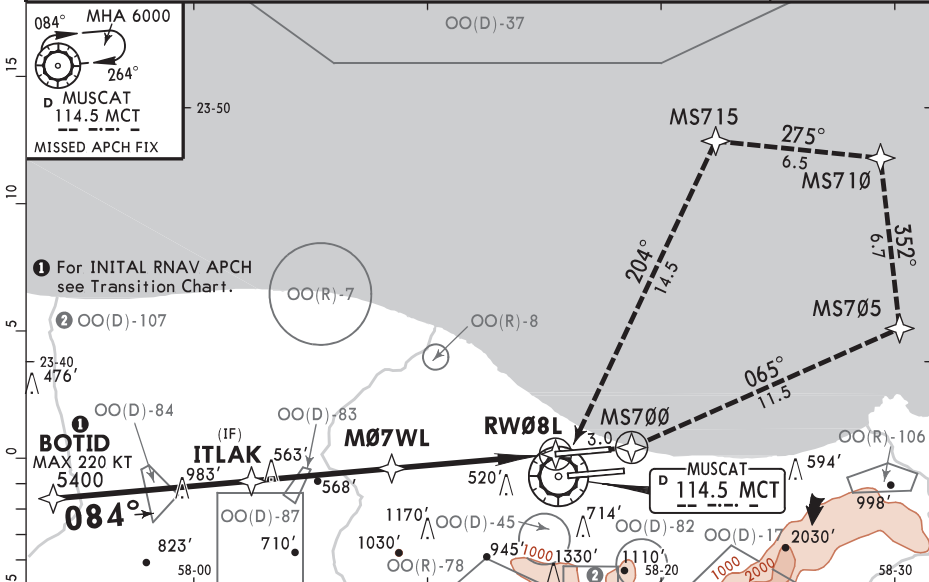
ATIS 126.8		MUSCAT Approach (R) 121.2		MUSCAT Tower North 118.825 South 118.4		Ground North 127.875 South 121.8	
LOC IML <b>108.9</b>	Final Apch Crs <b>084°</b>	<b>D6.7 IML</b> 2200' (2175')	ILS DA(H) Refer to Minimums	Apt Elev 49' Rwy 25'			
<b>MISSED APCH:</b> Climb on rwy hdg to 510', then turn LEFT (MAX 210 KT) to follow R-040 MCT climbing to 2800'. Then turn LEFT (MAX 220 KT) to VOR at 6000' and hold. Turns before MAP prohibited.							
Alt Set: hPa		Rwy Elev: 1 hPa	Trans level: FL150	Trans alt: 13000'		MSA MCT VOR	
1. VOR and DME or RADAR required. 2. Circling not authorized.							



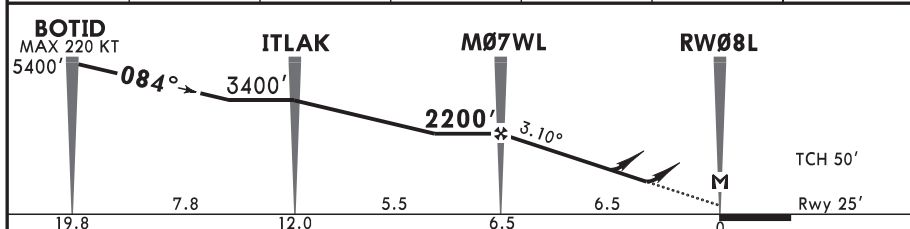
Gnd speed-Kts		70	90	100	120	140	160		
ILS GS	3.00°	372	478	531	637	743	849		
LOC Descent Angle	3.12°	386	497	552	662	773	883		
MAP at D1.2 IML									
Timing not authorized for defining the MAP.									

<b>Std/State</b>		STRAIGHT-IN LANDING				ILS		LOC (GS out)	
						A: 235' (210') C: 255' (230')		CDA	
						DA(H) B: 245' (220') D: 265' (240')		DA/MDA(H) 530' (505')	
		TDZ or CL out		ALS out				ALS out	
								R1500m	
		R750m		R750m		R1200m			
								R1600m	
								R2400m	
<b>1</b> VNAV DA(H) in lieu of MDA(H) depends on operator policy.									

ATIS 126.8		MUSCAT Approach (R) 121.2		MUSCAT Tower North 118.825 South 118.4		Ground North 127.875 South 121.8		
RNAV	Final Apch Crs <b>084°</b>	<b>M07WL</b> 2200'(2175')	LNAV/VNAV Refer to Minimums	Apt Elev 49' Rwy 25'		9100  MSA ARP		
<b>MISSED APCH:</b> Climb on RWY heading to MS700, turn LEFT to MS705, turn LEFT to MS710, turn LEFT to MS715, turn LEFT to VOR at or above 6000' and hold and wait for ATC instructions. MAX 220 KT.								
Alt Set: hPa Rwy Elev: 1 hPa Trans level: FL150 Trans alt: 13000' 1. RNP approach required. 2. Baro-VNAV not authorized below -15°C and above 50°C. 3. CIRCLE-TO-LAND: NOT AUTHORIZED.								



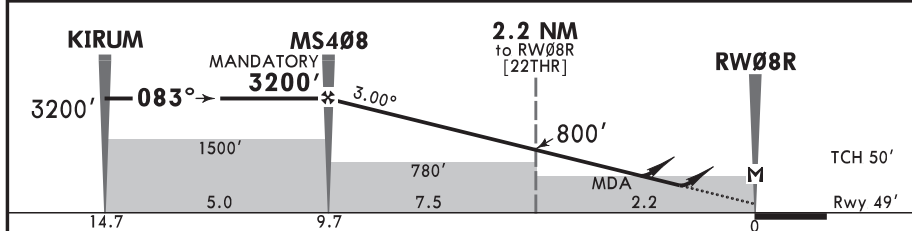
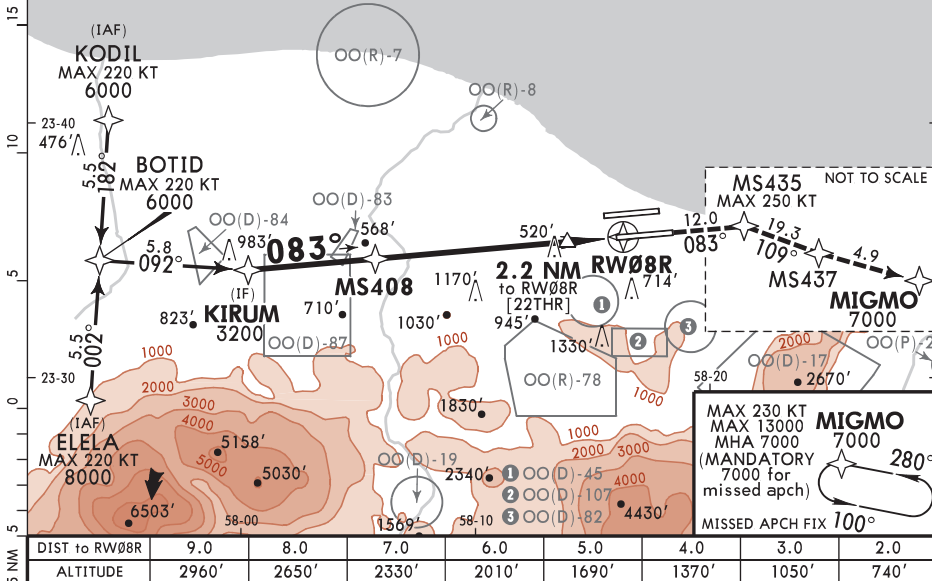
DIST to RW08L	6.0	5.0	4.0	3.0	2.0	1.0
ALTITUDE	2050'	1720'	1390'	1070'	740'	410'



Gnd speed-Kts	70	90	100	120	140	160	HIALS REIL PAPI 220 KT MAX MS700 MS705 LT	
Glide Path Angle	3.10°	384	494	548	658	768		878
MAP at RW08L	Timing not authorized for defining the MAP.							

<b>Std/State</b>		STRAIGHT-IN LANDING			
LNAV/VNAV		A: 295'(270') C: 325'(300')		LNAV CDFA	
DA(H) B: 305'(280') D: 345'(320')		DA/MDA(H) 580'(555')			
ALS out		ALS out			
A	R750m	R1300m		R1500m	
B		R1400m		R1800m	
C		R1400m		R2400m	
D		R1400m		R2400m	

ATIS 126.8		MUSCAT Approach (R) 121.2		MUSCAT Tower North 118.825 South 118.4		Ground North 127.875 South 121.8	
RNAV	Final Apch Crs <b>083°</b>	<b>MS408</b> MANDATORY <b>3200'</b> (3151')	LNAV/VNAV Refer to Minimums	Apt Elev 49' Rwy 49'		9000  MSA ARP	
<b>MISSED APCH:</b> Climb on course 083° to MS435 (MAX 250 KT) at or above 2000', then to MS437, then to MIGMO at 7000' and hold or follow ATC instructions. Hold at MIGMO MAX 230 KT. If unable to reach 7000' at MIGMO, continue climbing in the hold to 7000'.							
Alt Set: hPa		Rwy Elev: 2 hPa		Trans level: FL150		Trans alt: 13000'	
RNP Apch	1. RNAV 1 (GNSS): MS437 to MIGMO. 2. Baro-VNAV not authorized below -31°C and above 61°C. 3. CIRCLE-TO-LAND: NOT AUTHORIZED.						

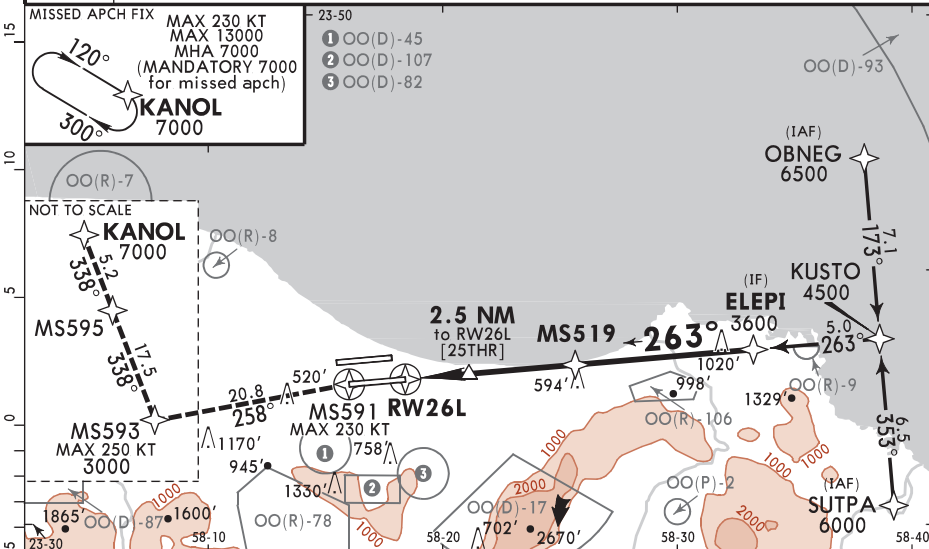


Gnd speed-Kts	70	90	100	120	140	160	HIALS REIL PAPI 250 KT MAX MS435 on 083°
Glide Path Angle 3.00°	372	478	531	637	743	849	
MAP at RW08R							
MS408 to MAP	9.7	8:19	6:28	5:49	4:51	4:09	3:38

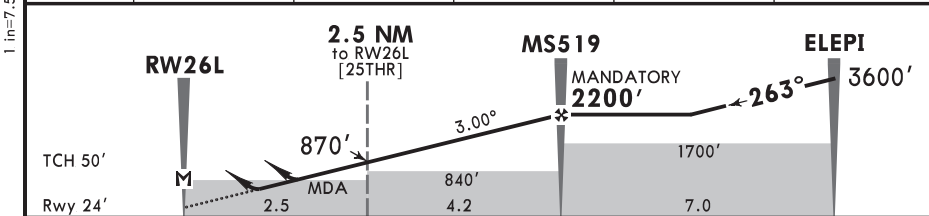
<b>Std/State</b>				STRAIGHT-IN LANDING			
LNAV/VNAV C: <b>400'</b> (351') DA(H) AB: <b>370'</b> (321') D: <b>420'</b> (371')				LNAV CDFA DA/MDA(H) <b>540'</b> (491')			
ALS out				ALS out			
A	R800m		R1500m		R1500m		R1500m
B	R900m		R1600m				R2300m
C	R1000m		R1700m				
D							

1 VNAV DA(H) in lieu of MDA(H) depends on operator policy. © JEPPESSEN, 2024. ALL RIGHTS RESERVED.

ATIS 126.8		MUSCAT Approach (R) 121.2		MUSCAT Tower North 118.825 South 118.4		Ground North 127.875 South 121.8	
RNAV	Final Aptch Crs <b>263°</b>	<b>MS519</b> MANDATORY <b>2200'</b> (2176')	LNAV/VNAV Refer to Minimums		Apt Elev 49' Rwy 24'		9000  MSA ARP
<b>MISSED APCH:</b> Climb on course 263° to MS591 (MAX 230 KT), then to MS593 (MAX 250 KT) at or above 3000', then to KANOL at 7000' and hold or follow ATC instructions. Hold at KANOL MAX 230 KT. If unable to reach 7000' at KANOL, continue climbing in the hold to 7000'.							
Alt Set: hPa		Rwy Elev: 1 hPa		Trans level: FL150		Trans alt: 13000'	
RNP Aptch 1. RNAV 1 (GNNS): MS595 to KANOL. 2. Baro-VNAV not authorized below -31°C and above 61°C. 3. CIRCLE-TO-LAND: NOT AUTHORIZED.							



DIST TO RW26L	2.0	3.0	4.0	5.0	6.0
ALTITUDE	710'	1030'	1350'	1670'	1980'



Gnd speed-Kts	70	90	100	120	140	160	HIALS REIL PAPI 230 KT MAX MS591 on 263°
Glide Path Angle 3.00°	372	478	531	637	743	849	
MAP at RW26L							
MS519 to MAP	6.7	5:45	4:28	4:01	3:21	2:52	2:31

<b>Std/State</b>				STRAIGHT-IN LANDING			
LNAV/VNAV A: <b>360'</b> (336') CD: <b>390'</b> (366') DA(H) B: <b>370'</b> (346')				LNAV CDFA DA/MDA(H) <b>470'</b> (446')			
A	R800m	ALS out		R1400m		ALS out	
B	R900m	R1500m				R1500m	
C	R1000m	R1700m		R1400m		R2100m	
D							

■ VNAV DA(H) in lieu of MDA(H) depends on operator policy.