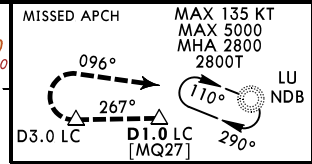
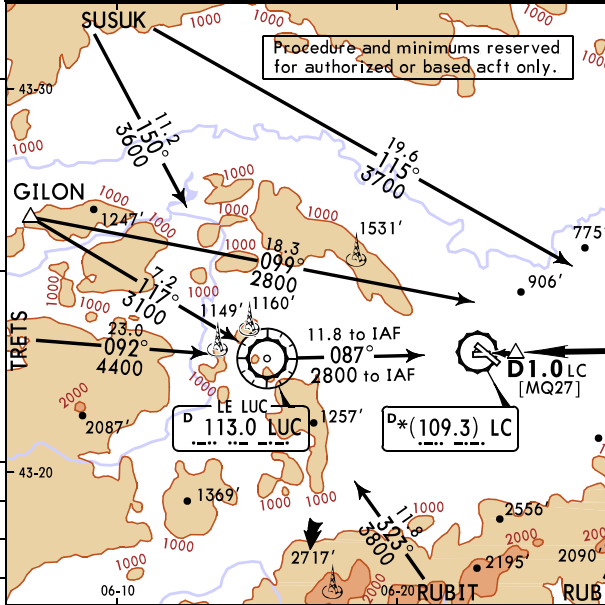
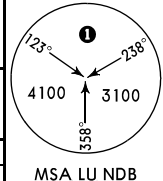
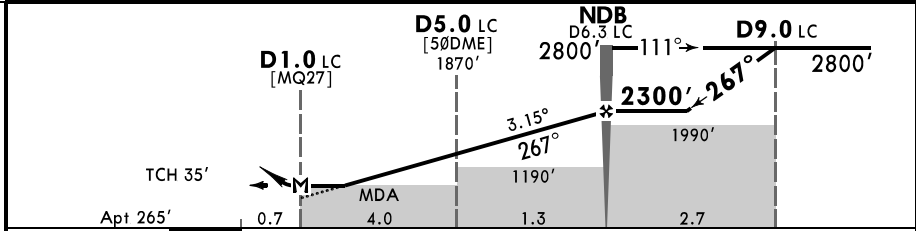


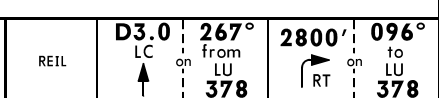
*ATIS <b>128.650</b>	*LE LUC Approach (R) <b>122.2</b>	*LE LUC Tower <b>123.0</b>	*Ground <b>121.850</b>
For UHF see MIL-101 listing			
NDB LU <b>378</b>	Final Apch Crs <b>267°</b>	NDB <b>2300'</b> (2035')	MDA(H) <b>1020'</b> (755')
MISSED APCH: Climb on 267° from NDB to D3.0 LC, then turn RIGHT on 096° to NDB climbing to 2800'.			Apt Elev 265'
Alt Set: hPa		Apt Elev: 10 hPa	Trans level: By ATC
DME required.		Trans alt: 5000'	



LC DME	3.0	4.0	5.0
ALTITUDE	1240'	1590'	1940'



Gnd speed-Kts	70	90	100	120	140	160
Descent Angle 3.15°	390	502	557	669	780	892
MAP at D1.0 LC						

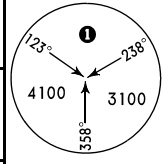


STRAIGHT-IN LANDING RWY 27		CIRCLE-TO-LAND	
MDA(H) <b>1020'</b> (755')		MDA(H) _____ VIS _____	
RVR 1200m		1270'(1005') 1200m	

*ATIS <b>128.650</b>	*LE LUC Approach (R) <b>122.2</b>	*LE LUC Tower <b>123.0</b>	*Ground <b>121.850</b>
-------------------------	--------------------------------------	-------------------------------	---------------------------

For UHF see MIL-101 listing

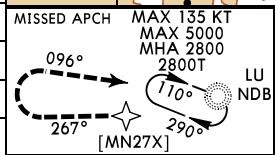
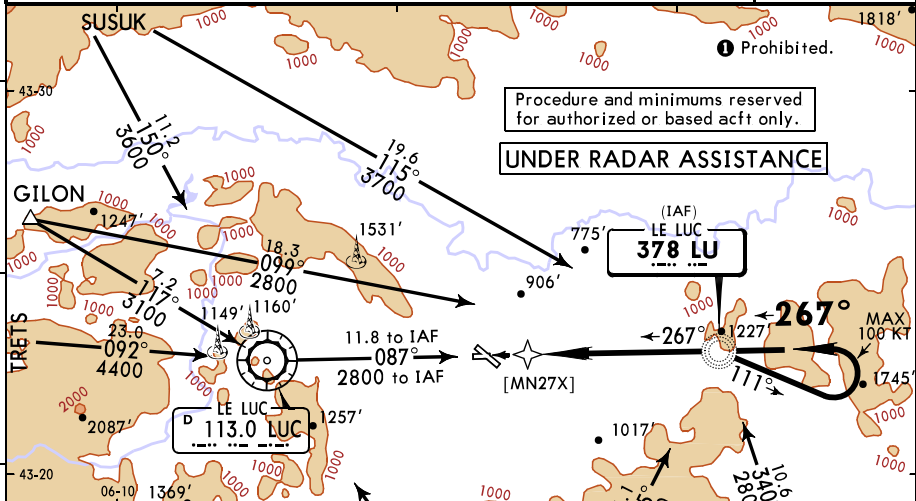
NDB LU <b>378</b>	Final Apch Crs <b>267°</b>	NDB <b>2800'</b> (2535')	MDA(H) <b>1210'</b> (945')	Apt Elev 265'
----------------------	-------------------------------	-----------------------------	-------------------------------	---------------



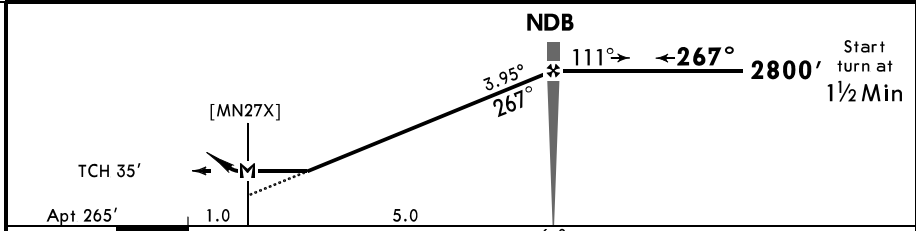
**MISSED APCH:** Climb on 267° from NDB to 1700', then turn RIGHT to NDB climbing to 2800'. Do not turn before passing MAP.

Alt Set: hPa	Apt Elev: 10 hPa	Trans level: By ATC	Trans alt: 5000'
--------------	------------------	---------------------	------------------

MSA LU NDB



DIST to MN27X	2.0	3.0	4.0
ALTITUDE	1540'	1960'	2380'



Gnd speed-Kts	70	90	100	120	140	160
Descent Angle	3.95°	489	629	699	839	979
NDB to MAP	5.0	4:17	3:20	3:00	2:30	2:09
						1:53

REIL	1700'	267° from LU 378	2800'	LU 378
------	-------	------------------	-------	--------

<b>Standard</b> STRAIGHT-IN LANDING RWY 27		CIRCLE-TO-LAND	
MDA(H) <b>1210'</b> (945')		MDA(H) _____ VIS _____	

C O P T E R	RVR 1200m	C O P T E R	1270'(1005') 1200m