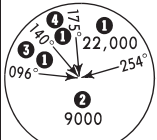


HTKJ/JRO KILIMANJARO INTL

24 MAY 24 **(13-1)**

JEPPESEN KILIMANJARO, TANZANIA VOR Z Rwy 09

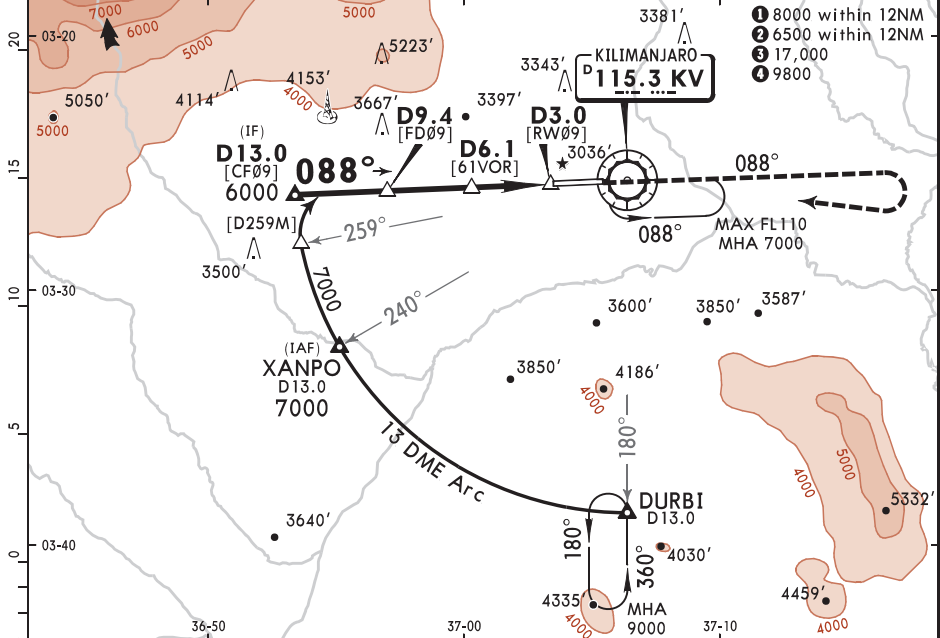
ATIS 119.4		KILIMANJARO Approach 120.1		KILIMANJARO Tower 119.9	
VOR KV 115.3	Final Apch Crs 088°	D9.4 5000' (2064')	DA/MDA(H) 3470' (534')	Apt Elev 2936' Rwy 2936'	



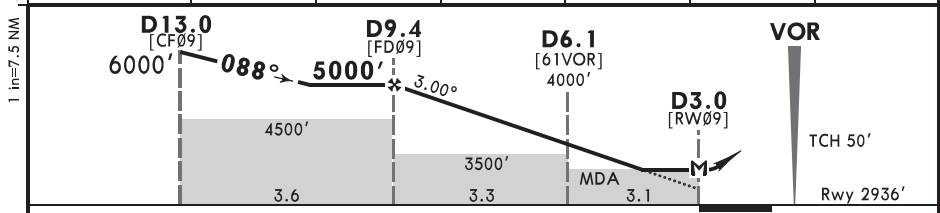
MISSED APCH: Climb STRAIGHT AHEAD to 6000', then turn RIGHT direct to VOR to hold at 7000', or as directed. MAX 210 KT

Alt Set: hPa Rwy Elev: 103 hPa Trans level: FL110 Trans alt: 10,500'

1. DME required. 2. Procedure restricted to MAX 230 KT.



KV DME	9.0	8.0	7.0	6.0	5.0	4.0
ALTITUDE	4930'	4610'	4290'	3970'	3650'	3335'



Gnd speed-Kts	70	90	100	120	140	160	HIALS PAPI	210 KT MAX	6000'
Descent Angle 3.00°	372	478	531	637	743	849			
MAP at D3.0									

Std STRAIGHT-IN LANDING

CDFA
DA/MDA(H) **3470'**(534')

ALS out

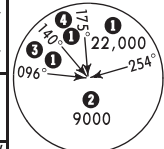
A	R1500m	
B	R1500m	
C	R1700m	R2400m
D	R1700m	R2400m

1 VNAV DA(H) in lieu of MDA(H) depends on operator policy.

CHANGES: Altitude.

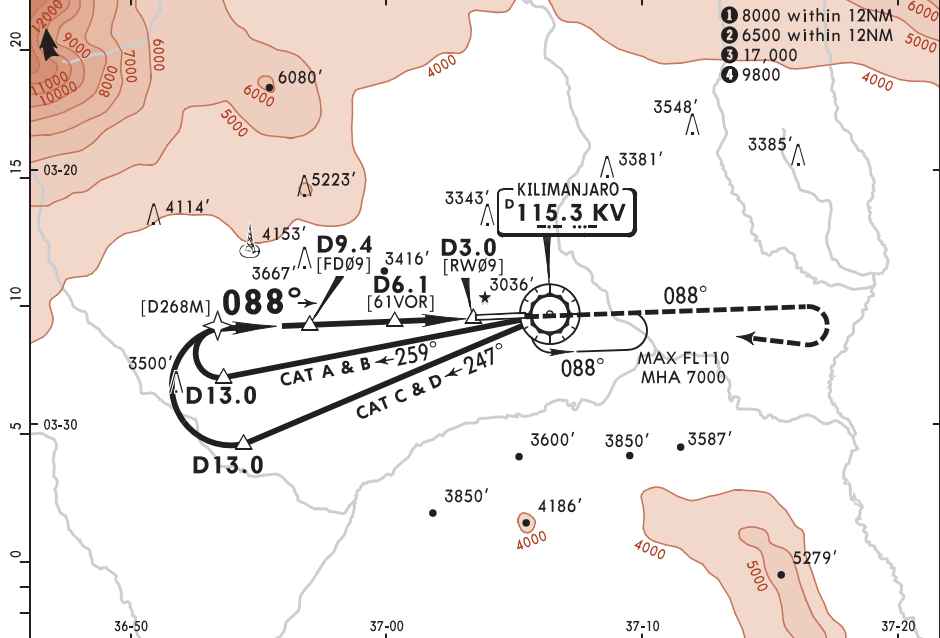
© JEPPESEN, 2024. ALL RIGHTS RESERVED.

ATIS 119.4		KILIMANJARO Approach 120.1		KILIMANJARO Tower 119.9	
VOR KV 115.3	Final Apch Crs 088°	D9.4 5000' (2064')	DA/MDA(H) 3470' (534')	Apt Elev 2936' Rwy 2936'	

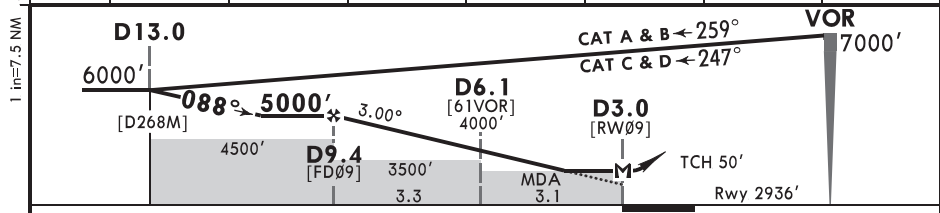


MISSED APCH: Climb STRAIGHT AHEAD to 6000', then turn RIGHT direct to VOR to hold at 7000', or as directed. MAX 210 KT

Alt Set: hPa Rwy Elev: 103 hPa Trans level: FL110 Trans alt: 10,500'
1. DME required. 2. Procedure restricted to MAX 230 KT.



KV DME	9.0	8.0	7.0	6.0	5.0	4.0	3.0
ALTITUDE	4930'	4610'	4290'	3970'	3650'	3335'	3015'



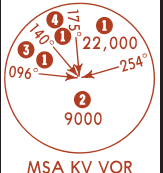
Gnd speed-Kts	70	90	100	120	140	160	HIALS PAPI	210 KT MAX	6000' ↑
Descent Angle 3.00°	372	478	531	637	743	849			

MAP at D3.0
Std STRAIGHT-IN LANDING
CDFA
DA/MDA(H) **3470'**(534')
ALS out

A	R1500m	
B	R1500m	
C	R1700m	R2400m
D	R1700m	R2400m

■ VNAV DA(H) in lieu of MDA(H) depends on operator policy.

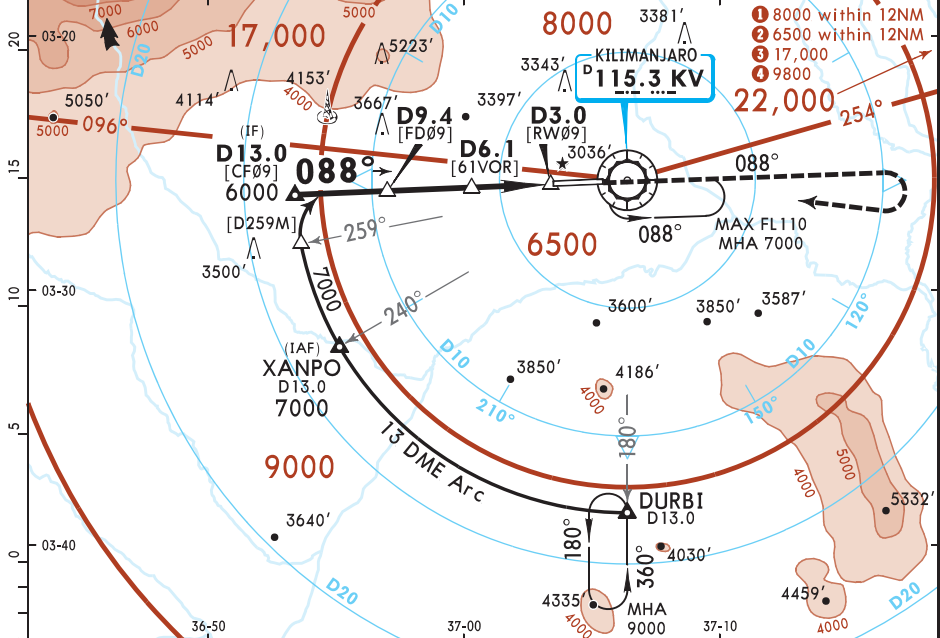
ATIS 119.4		KILIMANJARO Approach 120.1		KILIMANJARO Tower 119.9	
VOR KV 115.3	Final Apch Crs 088°	D9.4 5000' (2064')	DA/MDA(H) 3470' (534')	Apt Elev 2936' Rwy 2936'	



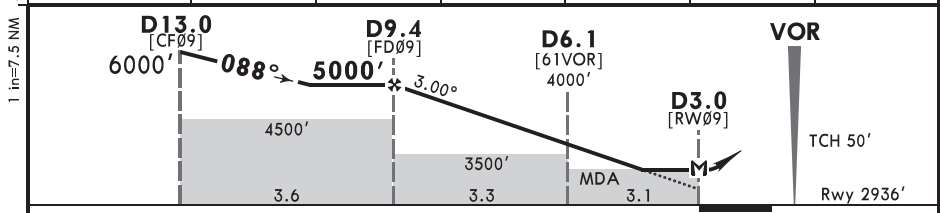
MISSED APCH: Climb STRAIGHT AHEAD to 6000', then turn RIGHT direct to VOR to hold at 7000', or as directed. MAX 210 KT

Alt Set: hPa Rwy Elev: 103 hPa Trans level: FL110 Trans alt: 10,500'

1. DME required. 2. Procedure restricted to MAX 230 KT.



KV DME	9.0	8.0	7.0	6.0	5.0	4.0
ALTITUDE	4930'	4610'	4290'	3970'	3650'	3335'



Gnd speed-Kts	120	140	160	180	HIALS PAPI	210 KT MAX	6000'
Descent Angle	3.00°	637	743	849			
MAP at D3.0							

Std STRAIGHT-IN LANDING

CDFA
DA/MDA(H) **3470'**(534')

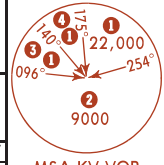
ALS out

C	R1700m	R2400m
D		

VNAV DA(H) in lieu of MDA(H) depends on operator policy.

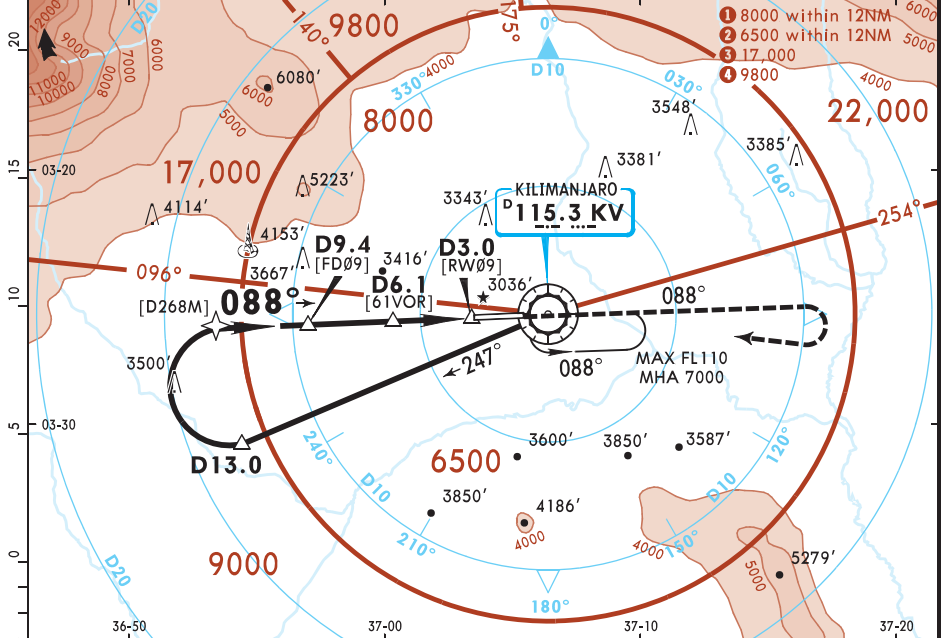


ATIS 119.4		KILIMANJARO Approach 120.1		KILIMANJARO Tower 119.9	
VOR KV 115.3	Final Apch Crs 088°	D9.4 5000'(2064')	DA/MDA(H) 3470'(534')	Apt Elev 2936' Rwy 2936'	

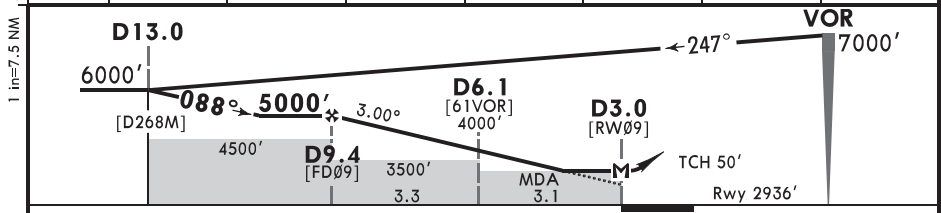


MISSED APCH: Climb STRAIGHT AHEAD to 6000', then turn RIGHT direct to VOR to hold at 7000', or as directed. MAX 210 KT

Alt Set: hPa Rwy Elev: 103 hPa Trans level: FL110 Trans alt: 10,500'
1. DME required. 2. Procedure restricted to MAX 230 KT.



KV DME	9.0	8.0	7.0	6.0	5.0	4.0	3.0
ALTITUDE	4930'	4610'	4290'	3970'	3650'	3335'	3015'



Gnd speed-Kts	120	140	160	180	HIALS PAPI	210 KT MAX	6000' ↑
Descent Angle	3.00°	637	743	849			
MAP at D3.0							

Std STRAIGHT-IN LANDING

CDFA
DA/MDA(H) **3470'(534')**

ALS out

C	R1700m	R2400m
D		

VNAV DA(H) in lieu of MDA(H) depends on operator policy.