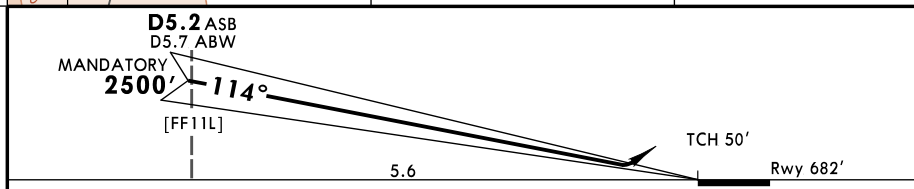
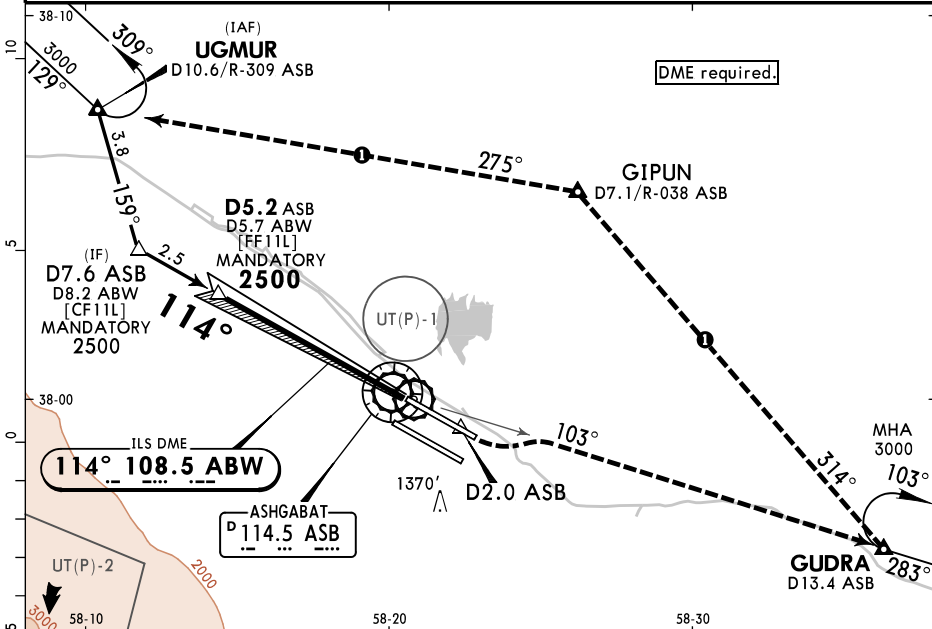
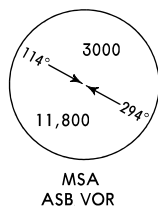


UTAA/ASB ASHGABAT

23 FEB 24 (11-1)

ASHGABAT Approach 123.5		ASHGABAT Radar (TWR) 118.7		ASHGABAT Tower 118.1		Ground 121.7	
LOC ABW 108.5	Final Apch Crs 114°	D5.2 ASB MANDATORY 2500' (1818')		ILS DA(H) 882' (200')	Apt Elev 693' Rwy 682'		
<p>MISSED APCH: Climb on track 114° to D2.0 ASB, then turn LEFT to intercept R-103 ASB to GUDRA climbing to 3000' to holding area or by ATC instructions.</p> <p>MISSED APCH WITH COMM FAILURE: ① Set SSR transponder to code 7600. Climb on track 114° to D2.0 ASB, turn LEFT to intercept R-103 ASB to GUDRA climbing to 3000'. Then proceed to GIPUN, then to holding area over UGMUR, hold for 3 Min, then according to chart.</p>							
Alt Set: hPa		Rwy Elev: 25 hPa		Trans level: FL120		Trans alt: 12000'	



Gnd speed-Kts	70	90	100	120	140	160	HTALS-II PAPI D2.0 ASB on 114°
Gs	3.00°	372	478	531	637	743	

State STRAIGHT-IN LANDING

ILS
DA(H) **882'** (200')

ALS out

A		
B	R550m	R1200m
C	V800m	
D		

CHANGES: Missed approach.

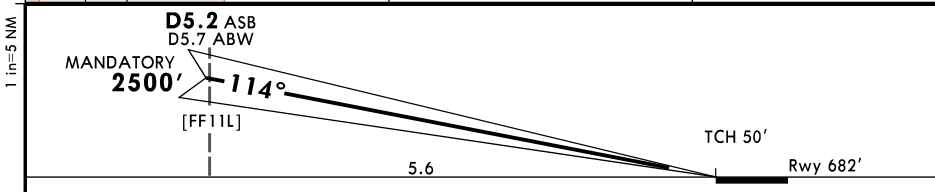
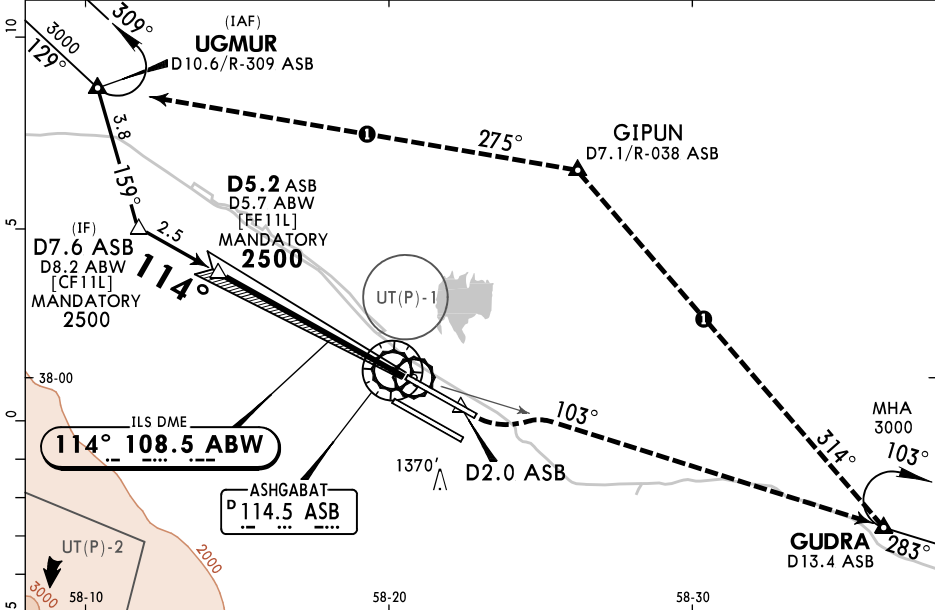
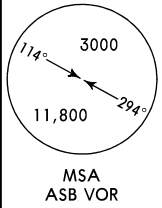
UTAA/ASB ASHGABAT



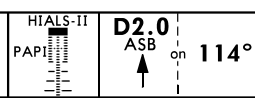
JEPPESEN ASHGABAT, TURKMENISTAN CAT II ILS Rwy 11L

23 FEB 24 (11-1A)

ASHGABAT Approach 123.5		ASHGABAT Radar (TWR) 118.7		ASHGABAT Tower 118.1		Ground 121.7	
LOC ABW 108.5	Final ApcH Crs 114°	D5.2 ASB MANDATORY 2500' (1818')		CAT II ILS RA 92' DA(H) 782'(100')		Apt Elev 693' Rwy 682'	
<p>MISSED APCH: Climb on track 114° to D2.0 ASB, then turn LEFT to intercept R-103 ASB to GUDRA climbing to 3000' to holding area or by ATC instructions.</p> <p>MISSED APCH WITH COMM FAILURE: ① Set SSR transponder to code 7600. Climb on track 114° to D2.0 ASB, turn LEFT to intercept R-103 ASB to GUDRA climbing to 3000'. Then proceed to GIPUN, then to holding area over UGMUR, hold for 3 Min, then according to chart.</p>							
Alt Set: hPa		Rwy Elev: 25 hPa		Trans level: FL120		Trans alt: 12000'	
1. DME required. 2. Special Aircrew & Acft Certification Required.							



Gnd speed-Kts	70	90	100	120	140	160	
Gs	3.00°	372	478	531	637	743	849



State STRAIGHT-IN LANDING
CAT II ILS
RA 92'
DA(H) **782'(100')**

R300m
① CAT D without autoland: R350m.

PANS OPS

CHANGES: Missed approach.

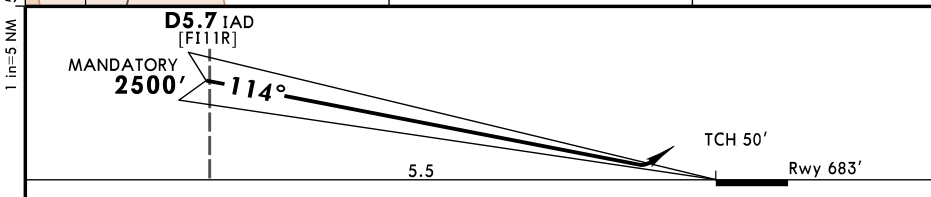
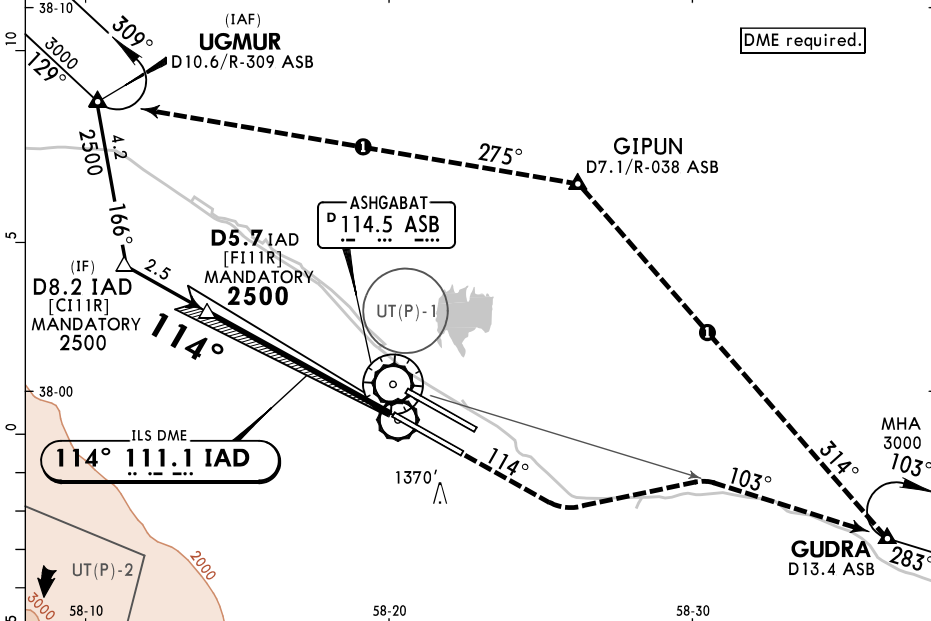
© JEPPESEN, 2000, 2024. ALL RIGHTS RESERVED.

UTAA/ASB ASHGABAT

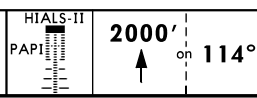
23 FEB 24 (11-2)

ASHGABAT Approach 123.5		ASHGABAT Radar (TWR) 118.7		ASHGABAT Tower 118.1		Ground 121.7	
LOC IAD 111.1	Final Apch Crs 114°	D5.7 IAD MANDATORY 2500' (1817')		ILS DA(H) 883' (200')	Apt Elev 693'	Rwy 683'	
<p>MISSED APCH: Climb on track 114° to 2000', then turn LEFT to intercept R-103 ASB to GUDRA climbing to 3000' to GUDRA holding area, or by ATC instructions.</p> <p>MISSED APCH WITH COMM FAILURE: ① Set SSR transponder to code 7600. Climb on track 114° to 2000', then turn LEFT to intercept R-103 ASB to GUDRA climbing to 3000', then proceed to GIPUN, then to holding area over UGMUR, hold for 3 Min, then proceed according to chart.</p>						<p>MSA ASB VOR</p>	

Alt Set: hPa Rwy Elev: 25 hPa Trans level: FL120 Trans alt: 12000'



Gnd speed-Kts	70	90	100	120	140	160	
Gs	3.00°	372	478	531	637	743	849



State **STRAIGHT-IN LANDING**

ILS

DA(H) **883'** (200')

ALS out

PANS OPS	A		
	B	R550m	R1200m
	C	V800m	
	D		

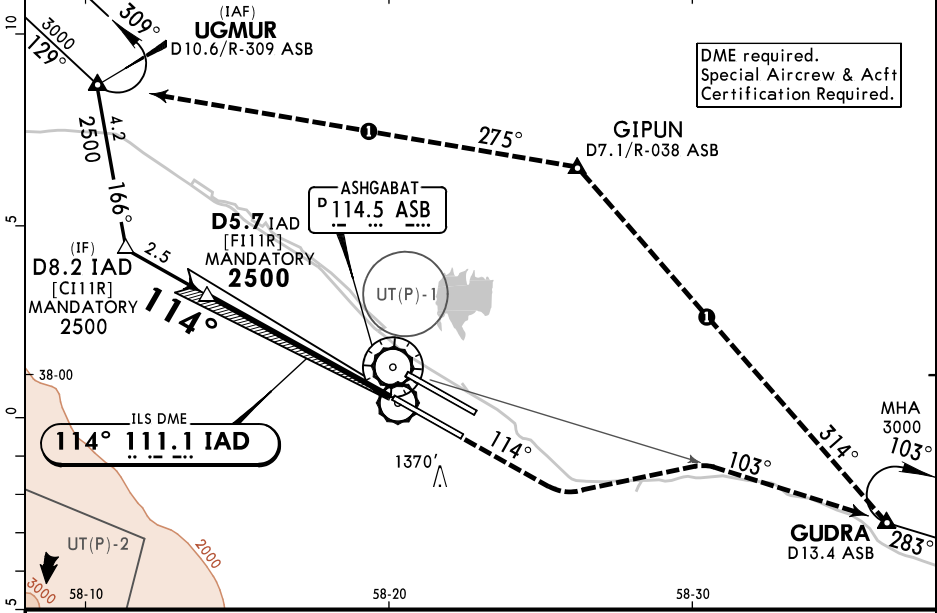
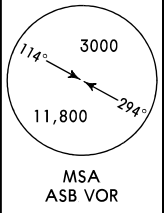
CHANGES: Missed approach.

UTAA/ASB ASHGABAT

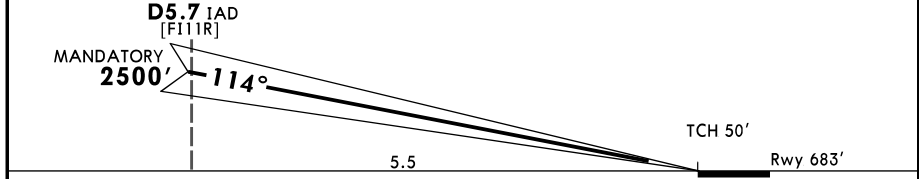
23 FEB 24 **(11-2A)**

JEPPesen ASHGABAT TURKMENISTAN CAT II/III ILS Rwy 11R

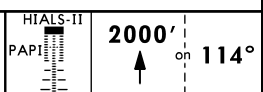
ASHGABAT Approach 123.5		ASHGABAT Radar (TWR) 118.7		ASHGABAT Tower 118.1		Ground 121.7	
LOC IAD 111.1	Final Apch Crs 114°	D5.7 IAD MANDATORY 2500' (1817')		CAT III & II ILS Refer to Minimums		Apt Elev 693' Rwy 683'	
<p>MISSED APCH: Climb on track 114° to 2000', then turn LEFT to intercept R-103 ASB to GUDRA climbing to 3000' to GUDRA holding area, or by ATC instructions.</p> <p>MISSED APCH WITH COMM FAILURE: ① Set SSR transponder to code 7600. Climb on track 114° to 2000', then turn LEFT to intercept R-103 ASB to GUDRA climbing to 3000', then proceed to GIPUN, then to holding area over UGMUR, hold for 3 Min, then proceed according to chart.</p>							
Alt Set: hPa		Rwy Elev: 25 hPa		Trans level: FL120		Trans alt: 12000'	



DME required.
Special Aircrew & Acft
Certification Required.



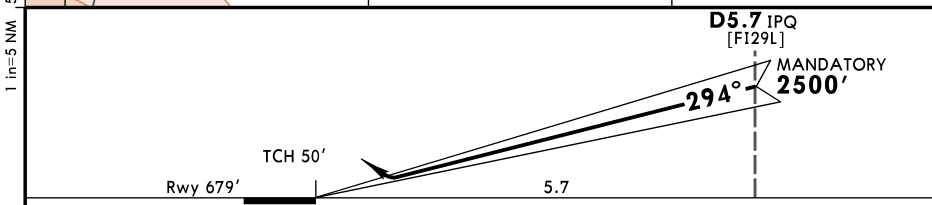
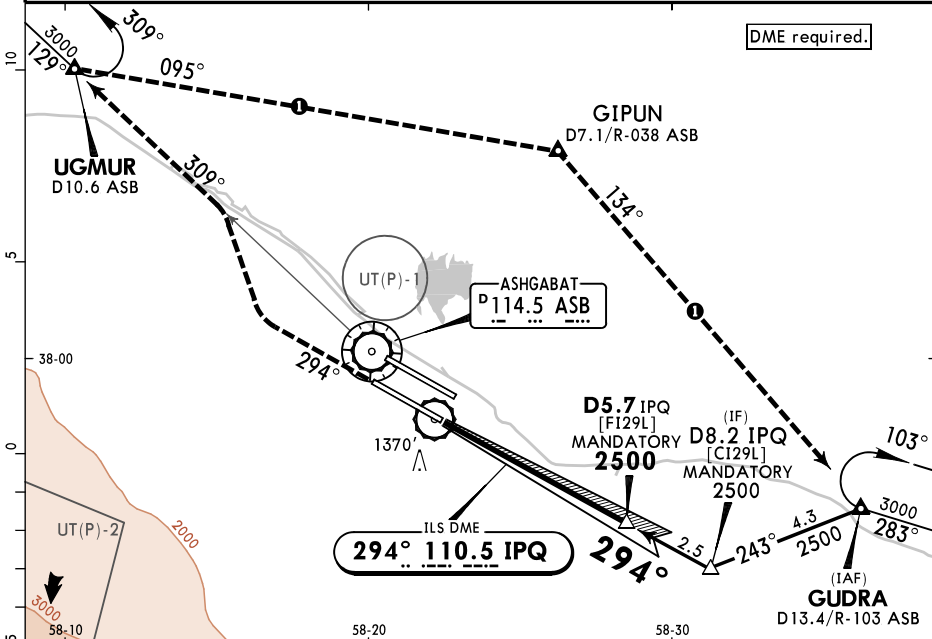
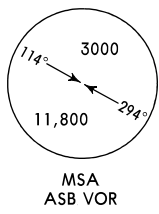
Gnd speed-Kts	70	90	100	120	140	160	
GS	3.00°	372	478	531	637	743	849



State		STRAIGHT-IN LANDING	
CAT III ILS RA 50' DA(H) 733' (50')		CAT II ILS RA 102' DA(H) 783' (100')	
R200m		R300m	
① CAT D without autoland: R350m.			

UTAA/ASB ASHGABAT

ASHGABAT Approach 123.5		ASHGABAT Radar (TWR) 118.7		ASHGABAT Tower 118.1		Ground 121.7	
LOC IPQ 110.5	Final Apch Crs 294°	D5.7 IPQ MANDATORY 2500' (1821')		ILS DA(H) 879' (200')	Apt Elev 693' Rwy 679'		
<p>MISSED APCH: Climb on track 294° to 2000', then turn RIGHT to intercept R-309 ASB to UGMUR climbing to 3000' to UGMUR holding area or by ATC instructions.</p> <p>MISSED APCH WITH COMM FAILURE: ① Set SSR transponder to code 7600. Climb on track 294° to 2000', then turn RIGHT to intercept R-309 ASB to UGMUR climbing to 3000', then proceed to GIPUN, then to holding area over GUDRA, hold for 3 Min, then proceed according to chart.</p>							
Alt Set: hPa		Rwy Elev: 25 hPa		Trans level: FL120		Trans alt: 12000'	



Gnd speed-Kts	70	90	100	120	140	160	HIALS-II PAPI	2000' on 294°
Gs	3.00°	372	478	531	637	743		

State STRAIGHT-IN LANDING

ILS

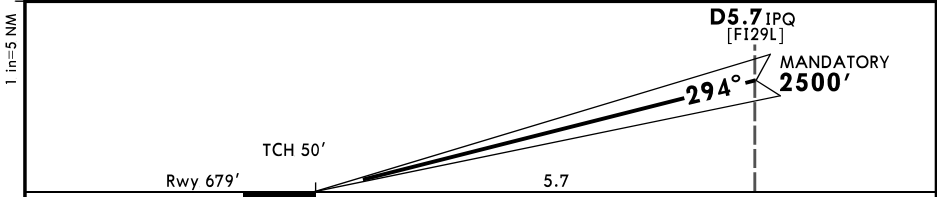
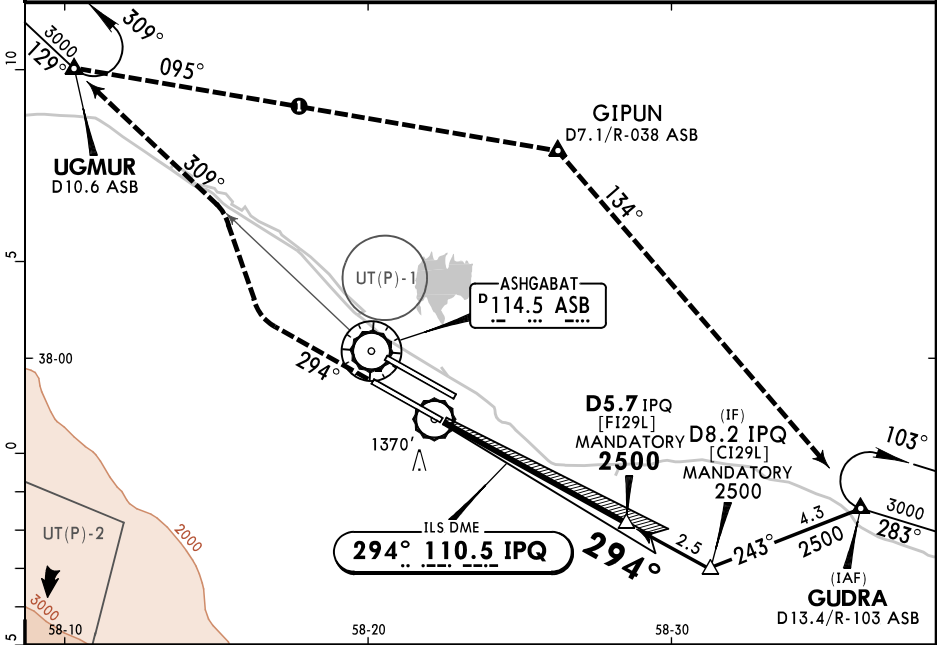
DA(H) **879'** (200')

ALS out

A		
B	R550m	R1200m
C	V800m	
D		

UTAA/ASB ASHGABAT

ASHGABAT Approach 123.5		ASHGABAT Radar (TWR) 118.7		ASHGABAT Tower 118.1		Ground 121.7	
LOC IPQ 110.5	Final Apch Crs 294°	D5.7 IPQ MANDATORY 2500' (1821')		CAT III & II ILS Refer to Minimums Apt Elev 693' Rwy 679'			
<p>MISSED APCH: Climb on track 294° to 2000', then turn RIGHT to intercept R-309 ASB to UGMUR climbing to 3000' to UGMUR holding area, or by ATC instructions.</p> <p>MISSED APCH WITH COMM FAILURE: ① Set SSR transponder to code 7600. Climb on track 294° to 2000', then turn RIGHT to intercept R-309 ASB to UGMUR climbing to 3000', then proceed to GIPUN, then to holding area over GUDRA, hold for 3 Min, then proceed according to chart.</p>							
Alt Set: hPa		Rwy Elev: 25 hPa		Trans level: FL120		Trans alt: 12000'	
1. DME required. 2. Special Aircrew & Acft Certification Required.							



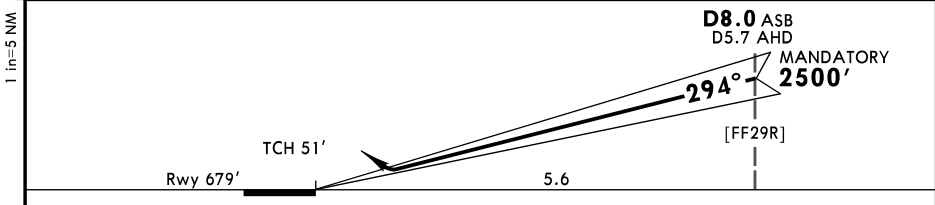
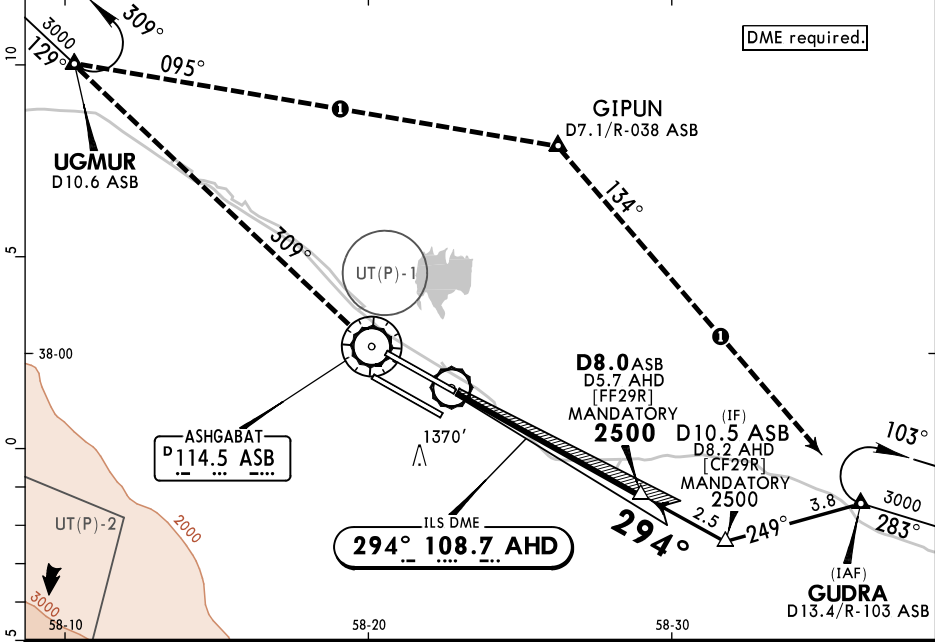
Gnd speed-Kts	70	90	100	120	140	160	HIALS-II PAPI
GS	3.00°	372	478	531	637	849	

State	STRAIGHT-IN LANDING	
	CAT III ILS RA 50' DA(H) 729' (50')	CAT II ILS RA 105' DA(H) 779' (100')
PANS OPS	R200m	R300m

① CAT D without autoland: R350m.
 CHANGES: Missed approach. © JEPPESEN, 2015, 2024. ALL RIGHTS RESERVED.

UTAA/ASB ASHGABAT

ASHGABAT Approach 123.5		ASHGABAT Radar (TWR) 118.7		ASHGABAT Tower 118.1		Ground 121.7	
LOC AHD 108.7	Final Apch Crs 294°	D8.0 ASB MANDATORY 2500' (1821')		ILS DA(H) 879' (200')	Apt Elev 693' Rwy 679'		<p>MSA ASB VOR</p>
<p>MISSED APCH: Climb to VOR, then turn RIGHT to intercept R-309 ASB to UGMUR climbing to 3000' to holding area, or by ATC instructions. MISSED APCH WITH COMM FAILURE: ① Set SSR transponder to code 7600. Climb on track 294° to VOR, then turn RIGHT to intercept R-309 ASB to UGMUR climbing to 3000', then proceed to GIPUN, then to holding area over GUDRA, hold for 3 Min, then according to chart.</p>							
Alt Set: hPa		Rwy Elev: 25 hPa		Trans level: FL120		Trans alt: 12000'	



Gnd speed-Kts	70	90	100	120	140	160	HIALS-II PAPI ASB 114.5 ↑
Gs	3.00°	372	478	531	637	743	

State STRAIGHT-IN LANDING

ILS

DA(H) **879' (200')**

ALS out

PANS OPS	A		
	B	R550m	R1200m
	C	V800m	
	D		

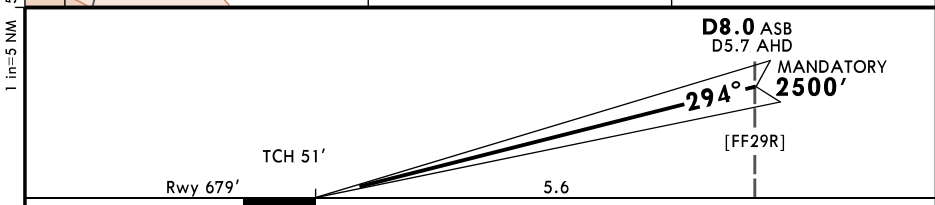
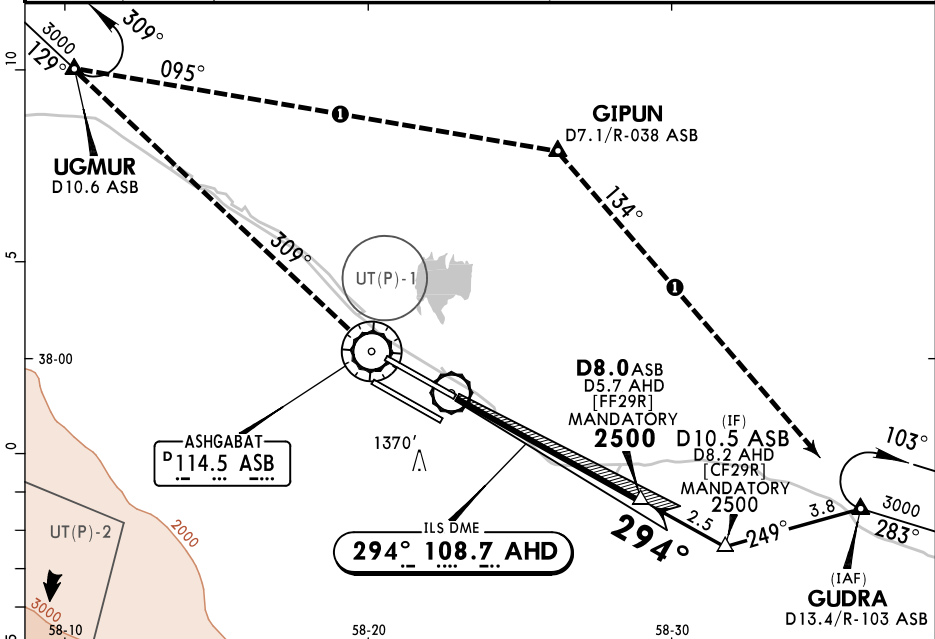
CHANGES: Missed approach.

UTAA/ASB ASHGABAT

23 FEB 24 (11-4A)

JEPESEN ASHGABAT, TURKMENISTAN CAT II ILS Rwy 29R

ASHGABAT Approach 123.5		ASHGABAT Radar (TWR) 118.7		ASHGABAT Tower 118.1		Ground 121.7	
LOC AHD 108.7	Final Apch Crs 294°	D8.0 ASB MANDATORY 2500' (1821')		CAT II ILS RA 112' DA(H) 779'(100')	Apt Elev 693'	Rwy 679'	
<p>MISSED APCH: Climb to VOR, then turn RIGHT to intercept R-309 ASB to UGMUR climbing to 3000' to holding area, or by ATC instructions.</p> <p>MISSED APCH WITH COMM FAILURE: ① Set SSR transponder to code 7600. Climb on track 294° to VOR, then turn RIGHT to intercept R-309 ASB to UGMUR climbing to 3000', then proceed to GIPUN, then to holding area over GUDRA, hold for 3 Min, then according to chart.</p>						<p>MSA ASB VOR</p>	
Alt Set: hPa		Rwy Elev: 25 hPa		Trans level: FL120		Trans alt: 12000'	
1. DME required. 2. Special Aircrew & Acft Certification Required.							



Gnd speed-Kts	70	90	100	120	140	160	HIALS-II PAPI 	ASB 114.5 ↑
Gs 3.00°	372	478	531	637	743	849		

State STRAIGHT-IN LANDING
CAT II ILS

RA 112'
DA(H) **779'**(100')

R300m

① CAT D without autoland: R350m.

CHANGES: Missed approach.