

A high-angle, top-down aerial view of a Boeing military transport aircraft, likely a C-17 Globemaster III, flying over a vast, hilly landscape. The aircraft is centered in the frame, showing its four engines, wings, and tail. The terrain below is a mix of green and brown, suggesting a rural or semi-arid environment. The sky is clear and blue.

BOEING GLOBAL SERVICES

Advanced Digital Solutions for Government & Military Aviation

BOEING GLOBAL SERVICES

Optimizing your mission with advanced digital aviation solutions powering government and military operations around the world.

Whether you're focused on asset readiness, asset optimization or operational sustainability, you can count on us to enhance your mission success.

You'll find us around the globe enhancing every aspect of government and military aviation operations. From planning and execution, to maintenance and analytics – we've got your mission covered.

Table of Contents

Mission Roles	3
----------------------	---

Mission Aircraft	5
-------------------------	---

Mission Planning

Schedulers, Flight Planners, Dispatchers, Operations Specialists	7
--	---

ForeFlight Dispatch	10
---------------------	----

Jeppesen Airport Data	11
-----------------------	----

Jeppesen Runway Analysis	12
--------------------------	----

Jeppesen Mission Planning and Military Dispatch Services	14
--	----

Jeppesen Fleet Insight	15
------------------------	----

Mission Execution

Pilots, Flight Officers, Flight Engineers, Aircrew	17
--	----

Jeppesen Military Chart Service	19
---------------------------------	----

Jeppesen Military NavData®	20
----------------------------	----

ForeFlight Military Flight Bag	21
--------------------------------	----

ForeFlight Military Flight Bag ONE	22
------------------------------------	----

Sentry Plus	22
-------------	----

Jeppesen FliteDeck Advisor	23
----------------------------	----

Jeppesen FliteDeck Pro	25
------------------------	----

Jeppesen Airport Moving Maps	26
------------------------------	----

Jeppesen Smart Airport Maps	27
-----------------------------	----

Jeppesen Aviator	28
------------------	----

Jeppesen RouteSync	29
--------------------	----

Boeing Onboard Performance Tool (OPT)	30
---------------------------------------	----

Maintenance

Mechanics, Technicians, Logistics Specialists, Fleet Managers	31
---	----

Boeing Maintenance Performance Toolbox (MPT)	33
--	----

Boeing Maintenance Turn Time	34
------------------------------	----

Boeing Airplane Health Management (AHM)	35
---	----

Tapestry Solutions GOLDesp	38
----------------------------	----

Boeing Loadable Software Airplane Parts - Librarian	39
---	----

Boeing Spectrum	40
-----------------	----

AerData Engine Fleet Planning And Costing (EFPAC)	41
---	----

AerData Records Management Solution (RMS)	42
---	----

Analytics

Technicians, Planners, Analysts, Designers	43
--	----

Boeing Flight Data Analytics	45
------------------------------	----

Boeing Insight Accelerator	47
----------------------------	----

Boeing Performance Management Framework	48
---	----

Boeing Emissions Reporter	49
---------------------------	----

Jeppesen Fatigue Risk Management (FRM)	50
--	----

Jeppesen APIs and SDKs	51
------------------------	----

Index	55
--------------	----



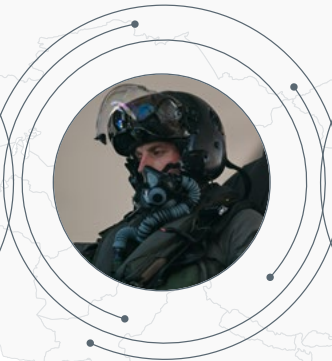
MISSION ROLES

Solutions for every mission phase and role in government and military aviation operations.



PLAN

Schedulers
Flight Planners
Dispatchers
Operations Specialists



EXECUTE

Pilots
Flight Officers
Flight Engineers
Aircrew



MAINTAIN

Mechanics
Technicians
Logistics Specialists
Fleet Managers



ANALYZE

Technicians
Planners
Analysts
Designers

MISSION AIRCRAFT

Advanced digital solutions for all types of military aircraft.



Jeppesen Military Charts
Worldwide military chart coverage



ForeFlight Military Flight Bag
Integrated EFB pilot app, runway analysis



Jeppesen NavData
Worldwide ARINC-424 coverage



ForeFlight Dispatch
Schedule-to-mobile releases



Jeppesen FliteDeck Advisor
Simple, powerful fuel efficiency



Boeing Airplane Health Management MIL*
Fault management to improve operational readiness



Boeing Insight Accelerator*
Advanced predictive maintenance



Jeppesen RouteSync
Synchronized flight route data



Jeppesen Emissions Reporter
Easy carbon emissions reporting management



AerData Engine Fleet Planning And Costing
Optimize planning and forecasting



Jeppesen Aviator
Integrated EFB suite



Jeppesen FliteDeck Pro - Windows
EFB, Airport Moving Maps



Boeing Onboard Performance Tool
Aircraft and runway performance

*Boeing platform specific solution



Jeppesen Military NavData

Worldwide military coverage



Jeppesen Military Charts

Worldwide military chart coverage



ForeFlight Military Flight Bag ONE

Integrated military EFB pilot app



Boeing Loadable Software Airplane Parts*

Aircraft operational data connectivity



Tapestry Solutions GOLDesp

Complete Service Lifecycle Management



AerData Records Management Solution

Manage aircraft and engine technical records



Boeing Spectrum

Document lifecycle solution



Boeing Maintenance Performance Toolbox

Unified maintenance operations



Boeing Maintenance Turn Time

Real time squawk reporting



ForeFlight Military Flight Bag ONE

Integrated military EFB pilot app



Jeppesen Military NavData

Worldwide military coverage



MISSION PLANNING

Schedulers, Flight Planners, Dispatchers, Operations Specialists

Successful missions start with successful planning.

Our advanced digital solutions and services empower your mission planning experts with the tools they need to successfully support all types of government and military flight operations. Boeing Global Services delivers innovative and highly capable solutions to take your mission planning to the next level by answering the growing demands and requirements for increasingly diverse aircraft fleets and operating environments.



ForeFlight Dispatch

A next-generation, multi-user, web-based flight planning solution that delivers greater efficiency and productivity for military flight operations of any size.

Features

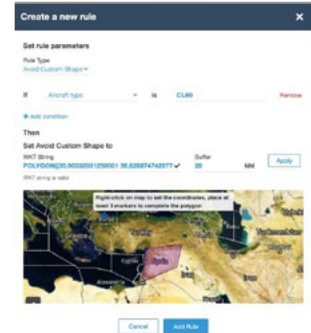
- Centralized global flight planning
- Global flight plan filing with DD-1801 support
- Global weather information and forecasts
- Oceanic route planning (ETP, ETOPS, PSR, SETOPS)
- Aircraft performance calculations
- Aerial refueling planning
- Complex route constraints and custom rule automations
- Custom navlogs, briefing documents and file attachments

Benefits

- Expanded global flight planning capabilities
- Improved collaboration between flight planners and pilots
- Streamlined flow from flight scheduling to flight planning
- Improved visibility into squadron flight operations
- Improved administrator control and customizations

Integrations

- ForeFlight Military Flight Bag
- Jeppesen FliteDeck Pro
- Jeppesen Aviator
- ARINC633-compliant EFB apps
- Flight scheduling and trip planning providers



Jeppesen Airport Data

Utilize the industry's most complete and up-to-date global airport data, available in a variety of formats.

Features

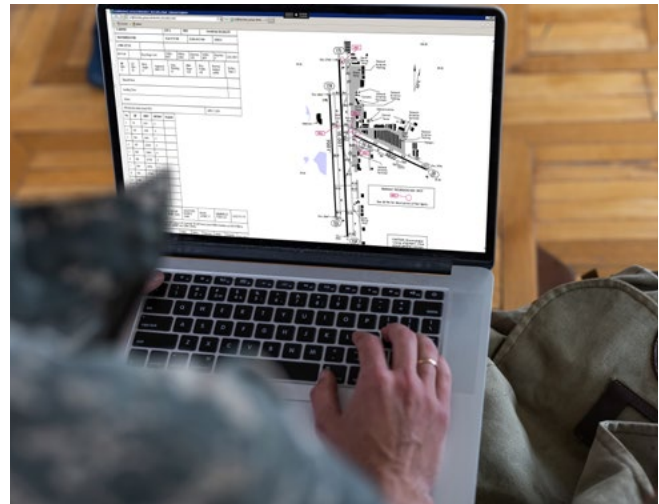
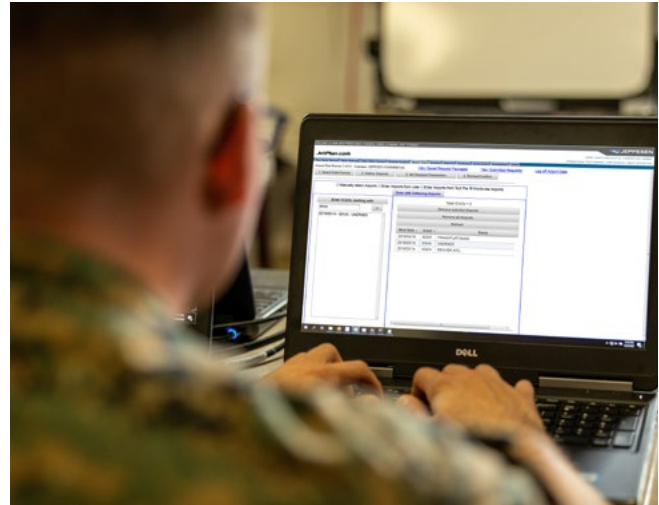
- Database of 4,300 airports worldwide
- Tailored procedure design, including more than 15 file formats to meet customer needs
- Coverage includes military bases and airfields; requests can be made to add airfields not in the database
- Web interface enables users to download their own data
- Graphical representation of engine-out procedures available

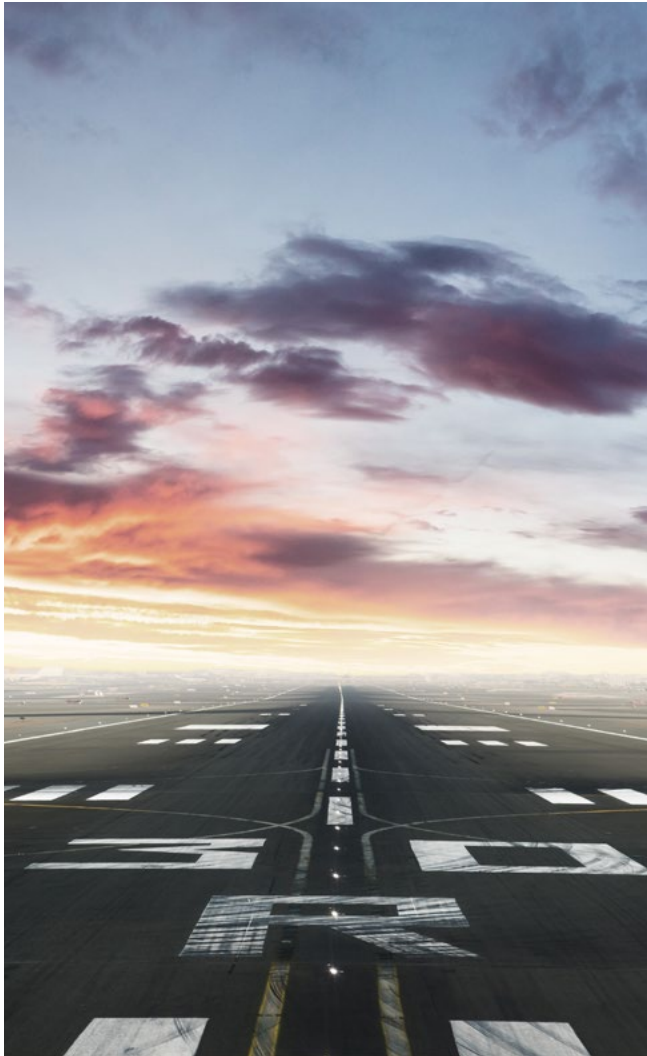
Benefits

- Improved safety
- Improved maximum takeoff weight and speed calculations
- Decreased fuel consumption
- Decreased time spent on manual tasks
- Increased cargo
- Improved operational processes
- Improved decision-making

Integrations

- Jeppesen NavData®
- Jeppesen Runway Analysis





Jeppesen Runway Analysis

Save time and fuel by using the most comprehensive takeoff and landing performance calculations available with airport, runway and obstacle databases in conjunction with aircraft performance data.

Features

- Database of 4,300 airports worldwide including military bases and airfields
- Provides calculations for a specific aircraft at a given runway with exact temperature, wind and runway conditions
- Runs calculations for a single point or a matrix table for specific aircraft
- Web-based interface

Benefits

- Improved safety compliance with regulatory requirements
- Optimized payload
- Decreased fuel consumption
- Decreased time spent on manual tasks
- Increased cargo
- Improved operational processes
- Improved decision-making

Integrations

- Jeppesen Airport Data
- Jeppesen NavData®





Jeppesen Mission Planning and Military Dispatch Services

Remove operational burdens by using our expert and personalized services for global mission planning, dispatch and flight planning supporting all phases of flight.

Features

- Certificated FAA aircraft dispatchers
- 24/7/365 mission planning and military dispatch support
- Regulatory compliant planning and military dispatch processes
- Offer proactive flight following services
- Assistance with obtaining military diplomatic clearances
- Customized services for international military operations
- Services to remote airports and unlisted landing strips
- Partnership with World Fuel Services
- Customer-specific web portals
- Paperless flight release delivery through Jeppesen FliteBrief and ForeFlight Military Flight Bag

Benefits

- Extensive industry and military planning and dispatching experience
- Increased operational efficiency
- Pilots and crew focus more on core functions
- Reduced pilot and crew focus on disruptions
- Continuous missions planning support
- Fuel savings through the pricing power of World Fuel Services

Jeppesen Fleet Insight

Next generation flight tracking uniquely positioned to help dispatchers, operations specialists and managers stay aware and ahead of changing conditions.

Features

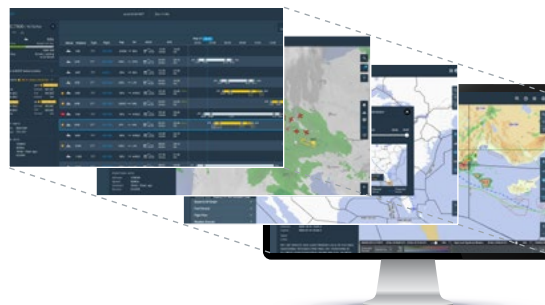
- Flight tracking with live position data
- Flight following shows actual vs. planned flight route
- Insight to flight events such as missed position reports
- Worldwide traffic with filtering capability
- Mapping features Jeppesen world-class data
- Weather and NOTAMs
- My Boeing Fleet deployment and integration

Benefits

- Improved insights into current fleet status
- Mitigate the impact of disruptive events
- Improved situational awareness
- Optimized operational mission performance

Integrations

- Jeppesen FliteBrief







MISSION EXECUTION

Pilots, Flight Officers, Flight Engineers, Aircrew

Execute missions safely and successfully.

There is no such thing as a small task when the mission is on the line. Military flight crews need digital solutions that improve efficiency and streamline processes allowing them to focus on the task at hand. Boeing Global Services delivers advanced solutions with navigation data, charts and flight deck applications designed to support demanding mission requirements.

Jeppesen Military Chart Service

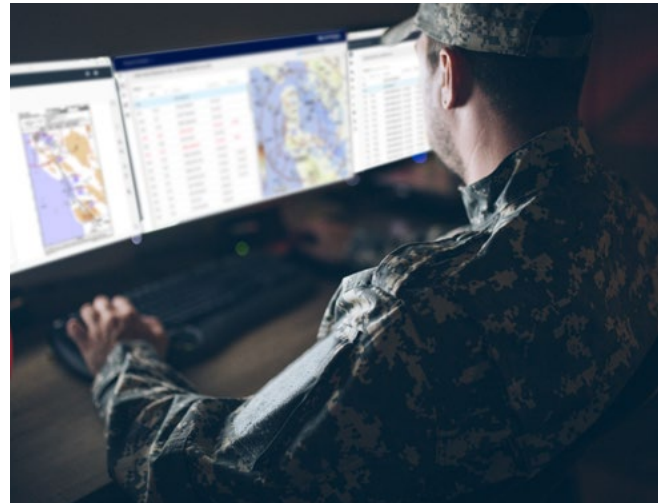
The most trusted charts in aviation. Operate with force-wide, unlimited access to Jeppesen's high quality, comprehensive global library of aeronautical charts.

Features

- Industry-leading, worldwide electronic library of aeronautical charts
- Jeppesen standard or tailored Airway Manuals®
- Military airport coverage and unique charts, such as Airport Qualification Procedures (AQP)
- Electronic charts for PC-Windows, online, mobile devices and integrated front panel displays
- Print charts from the Web or electronic charts for Windows software
- All terminal, enroute and supporting chart libraries and NOTAMs

Benefits

- Web access from any computer with an Internet connection
- Access to chart library on the ground and in the air
- True enterprise solution providing any chart at any time for any user



Jeppesen Military NavData®

Plan and fly the mission with confidence using the most trusted and complete aeronautical navigation database available.

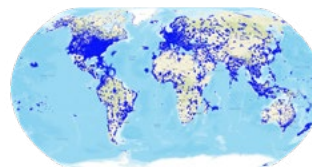
Features

- Jeppesen world class data formatted to U.S. DoD specifications, DAFIF 8.1*
- Worldwide coverage with more than 24,000 airports and heliports
- Industry quality certifications such as ISO 9001, FAA LoA Type 1
- Performance-Based Navigation ready
- Compatible with DoD mission planning systems
- Best coverage available with 47,000 pieces of source data analyzed and processed every 28 days

Benefits

- Highest quality data – backed by comprehensive and certified quality assurance processes
- Most accurate data – skilled analysts meticulously verify our database using thousands of business rules
- Enables better sustainability – more complete data leads to improved optimization and greater operational efficiency
- Unrivaled customer support 24/7

*Jeppesen navigation data is available in ARINC-424 format and DoD-specific format through Jeppesen Military NavData.



Jeppesen Military NavData



Other Data Source

ForeFlight Military Flight Bag

Powerful Tools for Safer Military Operations

Military pilots flying demanding missions deserve to fly with the world's most advanced aviation app. ForeFlight MFB integrates many of the powerful tools pilots need to conduct safer, more efficient flight operations.

Features

- Global charts and navigation data – link your Jeppesen Military Chart Service or purchase coverage through ForeFlight
- Worldwide planning and filing support
- Plan and file dynamic missions with Delays and STAYS
- Go paperless with Content Packs
- Global terrain and obstacle awareness
- Stay in sync with ForeFlight Dispatch

Benefits

- Improved situational awareness
- Access to global navigational charts
- Minimized disruption
- Automatization of processes
- Improved decision-making

Integrations

- ForeFlight Dispatch

foreflight.com/military

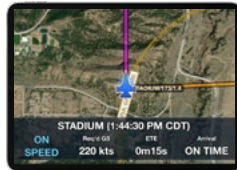




ForeFlight Military Flight Bag ONE

A new subscription from ForeFlight with the most advanced military planning features and in-cockpit tools that puts the power of a full mission planning system onto your kneeboard.

- Enroute Fuel Changes – take the guesswork out of aerial refueling
- Time on Target™
- Integrated AHAS Forecasts
- Planning with US DoD Obstacles
- Official DD-175-1 Weather Briefings
- Add Range Rings to User Waypoints



Start your free trial

Scan the QR code or sign up at foreflight.com/mfb-one-trial
**must be military, government, or current MFB subscriber*



Sentry Plus

A powerful and compact package to enhance any airman's cockpit. Access inflight ADS-B weather and traffic in ForeFlight, AHRS for backup attitude with Synthetic Vision, internal WAAS GPS, 18-hour battery life, FLARM traffic, and onboard storage for weather replay.

- Internal WAAS GPS
- ADS-B + FLARM Traffic
- FIS-B Weather (US only)
- AHRS for Backup Attitude
- CO Monitor + Alarm
- 18-Hour Battery Life

foreflight.com/sentry



Jeppesen FliteDeck Advisor

Flight optimization application that helps pilots reduce cruise fuel burn, lower maintenance costs and reduce carbon emissions.

Features

- Provides pilots with real-time, tail-specific, in-flight advisories to increase flight efficiency
- Advisories superior to those in the flight management computer and flight planning systems
- Considers fuel burn, time savings and airplane-specific performance metrics such as aircraft degradation
- No hardware or airplane connectivity required
- Pilot training takes less than 15 minutes

Benefits

- Reduce cruise fuel burn by 1-2%
- Increase potential for extended range
- Lower carbon emissions
- Support sustainability initiatives





Jeppesen FliteDeck Pro

The industry's first, best and most reliable mobile aviation charting application, used by more than 380 aviation organizations every day.

Features

- Providing military pilots with all aeronautical maps, charts, manuals and documents needed for paperless flying
- The most reliable mobile app available, with the accuracy found only in Jeppesen charts
- Utilizes Jeppesen's digital aviation ecosystem and smart map technology to deliver capabilities unmatched by the competition
- Global charting database provides the widest coverage available in the industry
- Jeppesen's cloud-based network and web-based backup service assure your pilots that they always have the navigational charts needed to keep your fleet moving safely

Benefits

- Minimize operational disruptions
- Reduce data transfer and cellular costs
- Support pilot efficiencies

Integrations

- Jeppesen Aviator
- Jeppesen Airport Moving Maps
- Jeppesen Smart Airport Maps
- Jeppesen ADS-B Connectivity Pack
- Jeppesen Advanced Weather Package
- ForeFlight Dispatch



Jeppesen Airport Moving Maps

Improve pilot situational awareness during ground movements, particularly at large or unfamiliar airports and during times of poor visibility.

Features

- Depicts ownership on detailed, data-driven terminal maps
- Dynamic rendering of runways, taxiways, stop bars and other airport structures
- Provides airport detail without cluttered depiction to simplify pilot decision-making
- Detailed runway, hotspot, gate, de-icing pad and parking stand information by touching objects on the map
- Highlight intended taxi route or other important items
- Largest selection of airport maps available in the industry
- Available on portable mobile devices or on installed certified hardware

Benefits

- Improve pilot situational and positional awareness
- Support safe ground movements
- Reduce pilot stress

Integrations

- Jeppesen FliteDeck Pro
- Jeppesen Aviator
- Front Panel Displays
- Class 3 EFB Separate Displays



Jeppesen Smart Airport Maps

Improve pilot situational awareness and reduce operational costs associated with the airport phase of flight.

Features

- Adds Jeppesen's Smart EFB Technology to over 1,000 Airport Moving Maps
- Provides pilots contextual airport information unique to their aircraft type, weather conditions and operation-specific preferences on their airport map
- View airport information based on visibility conditions, including low visibility taxi routes and centerline lighting
- See wingspan restrictions specific to your aircraft type on the dynamic airport map

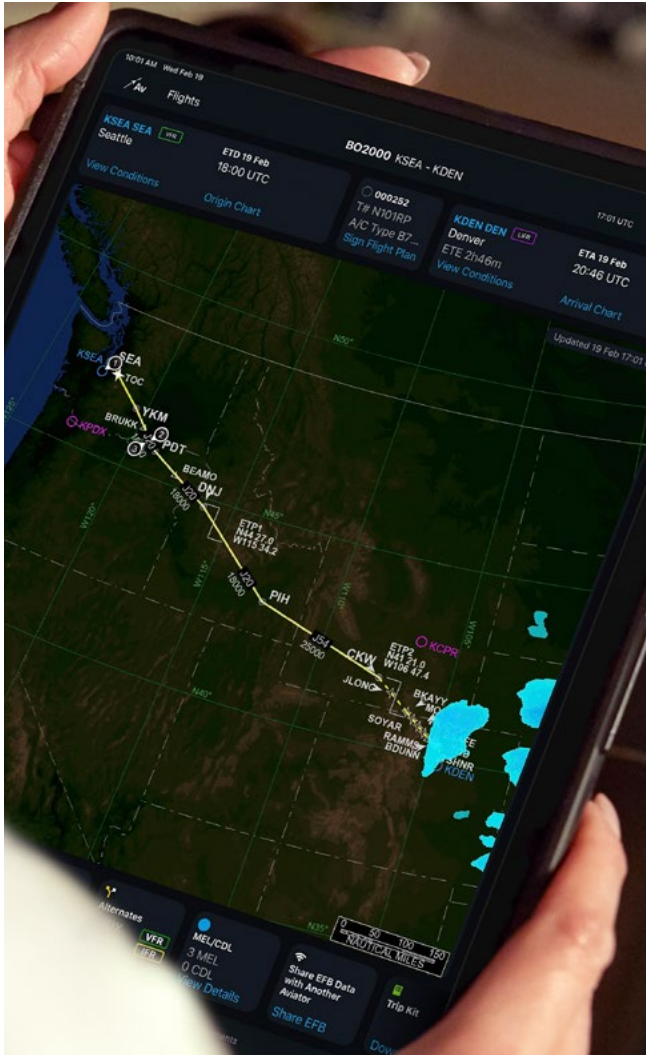
Benefits

- Shorten taxi times
- Reduce taxiway fuel burn
- Support safe ground movements
- Improve pilot positional and situational awareness

Integrations

- Jeppesen FliteDeck Pro
- Jeppesen Aviator





Jeppesen Aviator

Increase operational efficiencies with an integrated suite of EFB solutions.

Features

- Combines capabilities previously found in numerous mobile applications into a single, seamless, intuitive and easy-to-use EFB suite
- Configurable dashboard displays critical information at a glance
- Enables a complete digitization of the flight briefing process
- Manage and view airplane and squadron documents in a digital format
- View time and fuel trends at a glance along with meteorological and waypoint information

Benefits

- Lower ground operation costs
- Minimize operational disruptions with built-in redundancies
- Streamline flight deck workflows
- Reduce the risk of data errors

Integrations

- Jeppesen FliteBrief
- Jeppesen FliteDeck Pro
- Boeing Onboard Performance Tool
- ForeFlight Dispatch

Jeppesen RouteSync

Automatically synchronize and monitor flight route data between your operation center and an aircraft's flight management computer.

Features

- Optimizes flight plans based on current conditions closer to the actual flight
- Monitors all ACARS data in real-time for incorporation into ground service flight efficiency applications
- Stores the data for use in flight records and post-flight analytics
- Manages all flight management computer message sets with >99% reliability

Benefits

- Reduced reporting/block times
- Improved safety
- Improved flight record management
- Freed-up FMC memory
- Reduced need for back office support





Boeing Onboard Performance Tool (OPT)

Enable flight crews and ground personnel to perform real-time calculations based on current weather and runway conditions.

Features

- Calculates weight and balance, takeoff and landing computations
- Facilitates self-planning capability through fast and precise calculations
- Accounts for minimum equipment list (MEL) items
- Considers input variables like temporary NOTAMs which alter the airport definition
- Customizable user interface

Benefits

- Maximized payload capacity
- Reduced fuel flow degradation
- Lower engine maintenance costs
- Shortened taxi-out times
- Improved flight record management
- Improved decision-making

Integrations

- Jeppesen Aviator



MAINTENANCE

Mechanics, Technicians, Logistics Specialists, Fleet Managers

Maintain military aircraft fleets for optimal readiness.

Fleet readiness is critical to successfully executing your missions. Maintenance personnel need innovative solutions to help maintain, monitor and track military aviation assets. Our advanced technical operations solutions empower your mechanics, technicians and fleet managers with the tools they need to help keep your military aviation fleet on the line and ready to launch.

Boeing Maintenance Performance Toolbox (MPT)

Unify maintenance operations for aerospace and defense fleets with a single-source document-management solution.

Features

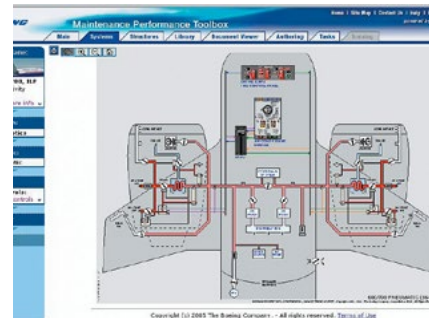
- Delivers real-time access to the information that officers and technicians need to resolve airplane maintenance issues
- Accessible at the aircraft, in the hangar, in the base or in the office, with or without a WiFi connection
- Enables customization of OEM manuals as well as job cards, independently and/or synchronized
- Provides complete control to create, manage and publish an Approved Maintenance Program book
- Users can tailor to specific operational requirements by selecting modules for particular aircraft models and systems
- Complements Maintenance Planning Systems

Benefits

- Faster turn times
- Streamlined management of information and tasks
- Increased productivity
- Fewer errors
- Reduced training time and costs

Integrations

- Boeing Maintenance Turn Time
- Maintenance Planning System



Boeing Maintenance Turn Time

Document unscheduled maintenance work in real-time while troubleshooting.

Features

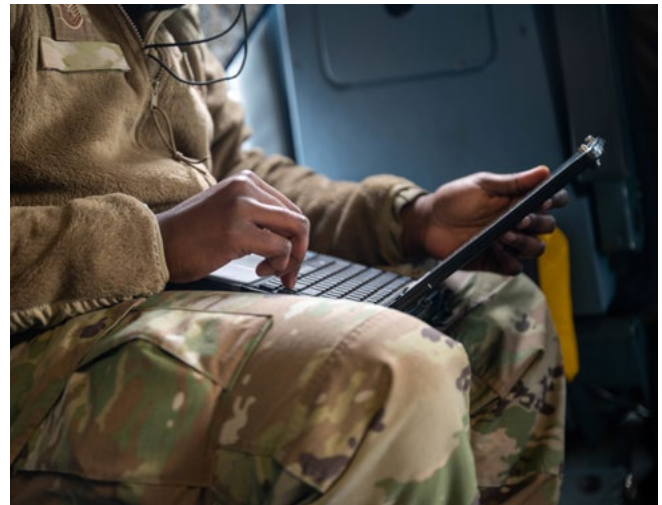
- Enables real-time, mobile collaboration
- Users can capture/share photos documenting areas of the aircraft in need of service or repairs
- Records structural damage on 3D models
- View dent and buckle report in 3D
- Integration with Toolbox Mobile Library and Structures

Benefits

- Faster resolution
- Improved productivity
- Improved on-time performance
- More accurate maintenance records
- Centralized visibility

Integrations

- Boeing Maintenance Performance Toolbox
- Maintenance Planning System



Boeing Airplane Health Management (AHM)

Collect in-flight aircraft information and relay it in real-time to mission control.

Features

- Provides timely identification and diagnosis of aircraft system issues
- Fault Report Decoder (FRD) quickly diagnoses aircraft squawks
- Custom alerts and analysis on a wide range of systems and components
- Predictive maintenance analytics

Benefits

- Reduced maintenance costs
- Less unscheduled maintenance
- Improved mission readiness
- Improved decision-making

Integrations

- Boeing Maintenance Performance Toolbox
- Government-generated Integrated Electronic Technical Manuals (IETM)









Tapestry Solutions GOLDesp

Complete Service Lifecycle Management for high-value government and military assets operating across air, land and sea domains. Used by OEMs, Air Forces and Ministries of Defense.

Features

- Integrated Supply & Maintenance (ISM)
- Contractor Logistics Support (CLS)
- Mobile Line Maintenance (MLM)
- Server Line Maintenance (SLM)
- Mobile Platform – Warehouse Management
- Distributed Logistics Service & Material Accountability (DLS)

Benefits

- Provides total asset visibility
- Increased efficiency with planned maintenance and planned missions
- Improves parts management forecasting
- Centralizes information across the enterprise
- Streamlines work recording and asset management
- Reduces inventory stockpiling and cannibalization
- Reduces need for paper-based records
- Improves collaboration and decision-making

Integrations

- Military supply systems
- Major ERP systems
- Software Development Kit (SDK) option with custom event triggers

Boeing Loadable Software Airplane Parts - Librarian

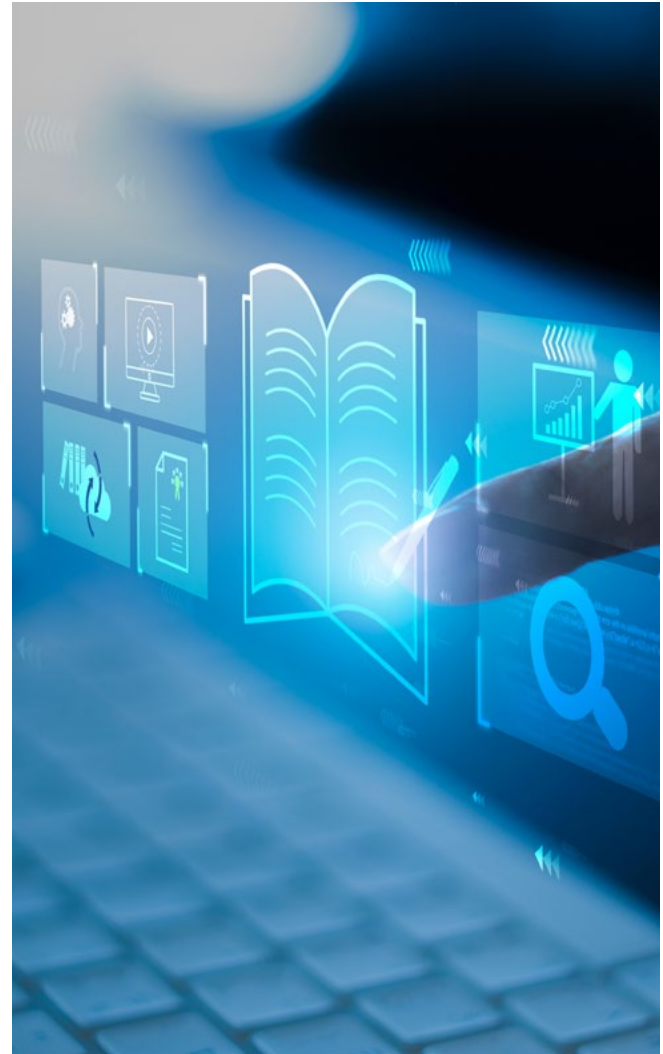
Enable operational data to flow quickly and securely, to and from your aircraft.

Features

- Supports wireless data download of quick-access recorder (QAR) data
- Access onboard security logs and reports, fault information and system performance
- Periodic updates for navigation and terrain databases
- Users can create, upload and validate Loadable Software Airplane Parts (LSAP)

Benefits

- Reduced support costs
- Increased efficiency
- Secured end-point access to data



Boeing Spectrum

Boeing Spectrum is a fully-integrated documentation lifecycle solution that allows for the creation of complex technical publications such as Aircraft Maintenance Manuals and Component Maintenance Publications.

Boeing Spectrum is an S1000D compliant application.

Features

- Data management, workflow and reporting
- Authoring (web-based and desktop)
- Quality assurance
- PDF publishing
- Interactive Electronic Technical Publication viewing

Benefits

- Creation and distribution of complex technical publications
- Data reuse saves authoring time and costs
- Ensures that authoring is S1000D XML compliant

Integrations

- Maintenance Performance Toolbox



AerData Engine Fleet Planning And Costing (EFPAC)

Proactively manage risk with visibility into mission readiness.

Features

- Define most optimum build standard to meet operational mission
- Spare part requirement forecasting
- Provides engine long-term maintenance planning and financial forecasting
- Integration with maintenance and engineering systems
- Cost scenario modeling
- Generates a variety of reports

Benefits

- Increased asset availability
- Automatization of processes
- Faster, better decision-making
- Increased collaboration between engineering, planning and finance
- Increased predictability of engine lifecycle and part out analysis
- Average reduction in maintenance budget of up to 15%
- More accurate budget forecasting



AerData Records Management Solution (RMS)

Manage, protect and share access to vast quantities of scanned aircraft and engine technical records.

Features

- Integration with major maintenance planning systems
- Auto reconciliation of records and e-sign verification
- Customizable fast-access indexing
- OCR search tool
- Data access available from anywhere, at any time
- New data can be added via scanning interface or PDF/TIFF import
- Quality control workflow
- Auto tagging paperwork for lease transitions

Benefits

- Optimized lease transition process
- Improved back office efficiency
- Streamlined digitization of hard copy technical records
- Centralized access
- Increased collaboration
- OEM agnostic solution



A man in a military-style uniform and headset is using a tablet in a server room. The background is filled with server racks and glowing lights. The overall tone is professional and technical.

ANALYTICS

Technicians, Planners, Analysts, Designers

Analytics help drive efficiency and mitigate risks across your operations.

Roles across all phases of government and military aviation operations are tasked with increasing mission efficiency, reducing costs and improving sustainability. Boeing Global Services delivers advanced analytic solutions to help reduce waste, reduce fuel burn, reduce downtime, mitigate risks, increase aircrew efficiency and optimize program performance.

Boeing Flight Data Analytics

Leverage essential data science capabilities for consistent analysis with a suite of advanced solutions for emissions and fuel efficiency, safety, training, maintenance, reliability and IT—all developed around a common flight data processing core.

Features

- Flight Operations Quality Assurance (FOQA)
- Flight Data Monitoring (FDM)
- Self-Service Analytics (SSA)
- Supports safety management system and regulatory obligations
- Provides analyses of over 80 events, including runway overrun, stabilized approaches and tail strike protection
- Supports use cases for departments to monitor aircraft QAR data correlated with engineering operations data to gain additional insights

Benefits

- Increased productivity
- Improved efficiency
- Better operational flexibility
- Proactively identify risk areas





Boeing Insight Accelerator

An advanced predictive maintenance solution leveraging the 'big data' of aviation to derive prognostic insights and generate tailored alerts to improve fleet readiness.

Features

- QAR/CPL flight data analysis
- Built-in Augmented Analytics
- Machine learning algorithms quickly identify problem areas
- Create and deploy custom alerts
- Automation eliminates manual and time-consuming management of complex data

Benefits

- Improved reliability and fleet readiness
- Improved efficiency with reduced project completion times
- Reduced unscheduled maintenance events
- Lowered risk and uncertainty

Integrations

- Boeing Airplane Health Management MIL (in development)



Boeing Performance Management Framework

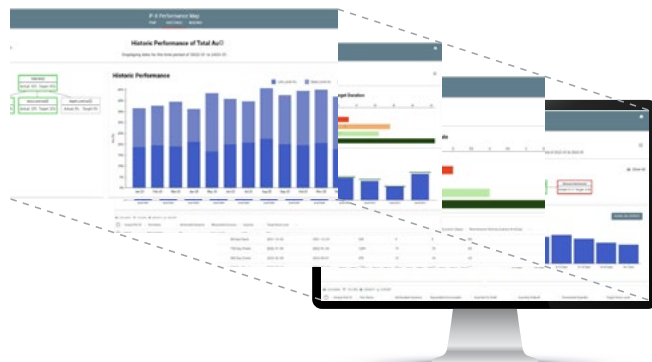
Monitor the integrated performance of complex sustainment programs in the context of availability and other contractual metrics with comprehensive insight to all fleet sustainment functions.

Features

- Analytics-based sustainment performance and cost models
- Suite of program management dashboards
- Yields 2.5% - 5.0% reduction in sustainment costs

Benefits

- Clear cost/performance analysis for continuous improvement at your fingertips
- Optimized collaboration environment
- Improved support for consultative engagement services



Boeing Emissions Reporter

Carbon reporting made easy. Delivering proven, actionable insights for efficient and sustainable military operations.

Features

- Single, simple data capture – only 12 parameters to operate
- Automated data checks – 60+ checks ensure accuracy
- No assumptions – entire carbon footprint for all flights
- Simple interface – easy implementation
- Trends – view emissions trends and observe against baseline
- Multi-scheme – 5 reporting schemes in one
- Automated reporting – save time filling in regulatory reports

Benefits

- Better management of carbon emissions programs
- Streamlined CO2 reporting process



Jeppesen Fatigue Risk Management (FRM)

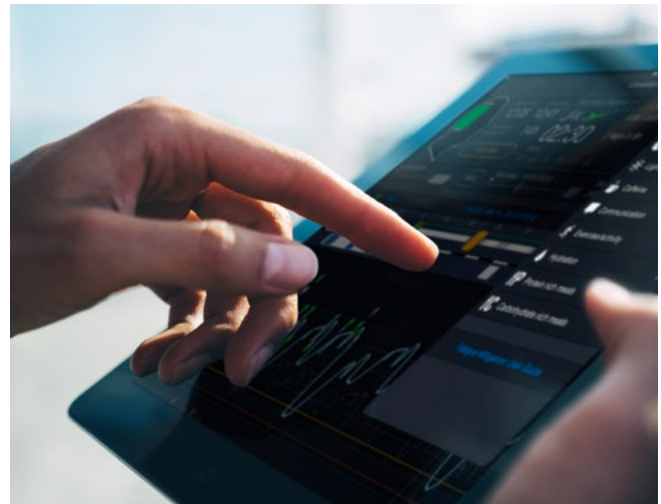
Forecast, manage and mitigate aircrew fatigue risk throughout the aircrew management process.

Features

- Predicts aircrew alertness and associated risk for each flight
- Analyzes fatigue trends over time
- Customization framework
- Integration of scientifically validated Boeing Alertness Model (BAM)
- Solution suite includes CrewAlert and Concert

Benefits

- Safer, higher quality aircrew plans
- Improved detection of flights and duties with increased fatigue risk
- Optimized trade-offs with other KPIs



Jeppesen APIs and SDKs

Utilize Jeppesen map technology, aeronautical data and analytics in your own applications for an unparalleled insight into occurrences affecting your day-to-day mission operations.

Features

- Choose complete Boeing solutions, or develop your own using Jeppesen SDKs or APIs
- Jeppesen Map Kit SDKs provide interactive map depiction and data access of Jeppesen's aeronautical data optimized for cloud-based web and mobile applications
- Jeppesen Aero Insight APIs combine real-time information and data analytics with Jeppesen's aeronautical database
- Jeppesen NOTAMs APIs gives you access to Jeppesen's worldwide NOTAM text and graphical NOTAM services, with smart sorting, filtering, and alerting along your flight plan
- Access Jeppesen's global aeronautical database with Jeppesen Aeronautical Data APIs

Benefits

- Utilize Jeppesen map technology and data in your own operational solutions
- The single data source provides continuity across your entire operation
- Improve situational awareness and efficiencies across your operation

Integrations

- Any web-based or mobile application





A sunset over a beach with the text "DIGITAL SOLUTIONS FOR ALL PHASES OF YOUR MISSION." overlaid in teal.

**DIGITAL
SOLUTIONS
FOR ALL
PHASES OF
YOUR MISSION.**



BOEING GLOBAL SERVICES MILITARY SOLUTIONS

Our ecosystem of military digital aviation solutions offers comprehensive services and support to ensure optimal mission readiness around the globe.

Mission Planning

ForeFlight Dispatch
Jeppesen Airport Data

Jeppesen Runway Analysis
Jeppesen Mission Planning Services

Jeppesen Military Dispatch Services
Jeppesen Fleet Insight

Mission Execution

Jeppesen Military Chart Service
Jeppesen Military NavData®
ForeFlight Military Flight Bag
FliteDeck Advisor

Jeppesen FliteDeck Pro
Jeppesen Airport Moving Maps
Jeppesen Smart Airport Maps
Jeppesen Aviator

Boeing Onboard Performance Tool
Jeppesen RouteSync

Maintenance

Boeing Maintenance Performance Toolbox
Boeing Maintenance Turn Time
Boeing Spectrum (S1000D)

AerData Engine Fleet Planning And Costing
AerData Records Management Solution
Tapestry Solutions GOLDesp

Boeing Airplane Health Management
Boeing Loadable Software Airplane Parts

Analytics

Emissions Reporter
Insight Accelerator
Jeppesen APIs and SDKs

Flight Operations Quality Assurance/Flight Data Management
Self-Service Analytics

Fatigue Risk Management
Performance Management Framework



aerdata.com



foreflight.com/military



jeppesen.com/military



tapestrysolutions.com



 **BOEING**

 **AERDATA**

 **ForeFlight**

 **JEPPESEN**

 **TAPESTRY
SOLUTIONS**