

# Always up to date, always in sync

With Ground Controls Tailored Maps, FliteDeck Pro brings ground operations crews and pilots closer together

You already rely on FliteDeck Pro for the most accurate, reliable enroute maps—and we're making it even better by adding Ground Controls with Tailored Maps.

Now, your team has access to the right aeronautical data when and where they need it. Ground operations can update critical company information in minutes, with information available to pilots in the context of a flight. So whoever uses the data—flight operations, dispatch, pilots, or others—your entire operation sees and responds to the same data.

Here's how your airline can use Tailored Maps to enhance your Jeppesen FliteDeck Pro enroute data.



## ON THE GROUND

### Full control

Ground operations are free from the 28-day revision cycle with the ability to send date-specific or real-time updates.

Scalable, reliable, web-based technology protects data with user permissions that customize access for those who need it and keeps a record of who used it.

### Fast distribution

Crews can send updates through one app with single sign-on capabilities—making it easier to ensure the right information gets to the right place, at the right time, without the need to reference multiple sources.

Airlines send out their own report briefings to multiple places by multiple methods like text, email, or messenger—making it too easy for pilots to miss key updates.

With Tailored Maps, content administrators can publish updates as needed—outside of established revision cycles—to FliteDeck Pro, putting the right data in the right place, at the right time.

And personnel won't waste time sending updates to multiple places, or waiting to confirm receipt.

Company airport statuses change frequently, and it's not always easy for pilots to see which airports they can use or whether an airport is authorized for their airplane.

Ground Controls with Tailored Maps equips ground crews to update airport statuses fast and push revised content to pilots in real time.

### Fewer operational disruptions.

Fast, easy content sharing helps increase operational awareness and reduce the risk of interruptions caused by missing or delayed company data.

### Effective adoption.

Tailored Maps is easy for administrative staff to learn and use.

## IN THE COCKPIT

### No missed updates.

Pilots never have to leave FliteDeck Pro to view updates from ground controls personnel. Published data is available to ground and flight crews quickly and in the right flight context, helping reduce heads-down time and improve situational awareness.

When pilots have to dig through multiple or large data sources to find what they need, they're more likely to be fatigued or miss key flight or airport information.

With Tailored Maps, company data is updated and distributed to FliteDeck Pro in minutes, in the right flight context. Ever-changing enroute or airport data like ETOPS range rings, company airports and usage, and company station information can be updated when needed and displayed where expected.

Missed information can prevent pilots and ground operations from working smoothly and efficiently together.

With Tailored Maps, pilots can trust they'll receive important data as soon as it's needed for each flight. This creates trust between pilots and ground operations crews, while empowering everyone to make smarter decisions.

### Shared knowledge.

Because EFB information updates in real time, pilots and ground operations have access to the same data when they need it—no need for additional notifications, apps, or complicated processes.

## IT PAYS TO PUT GROUND OPERATIONS AND PILOTS IN SYNC

Publishing on your own schedule means increased efficiency, lower costs, and smoother operations.



**Better fuel efficiency.**  
More direct routes, more savings.

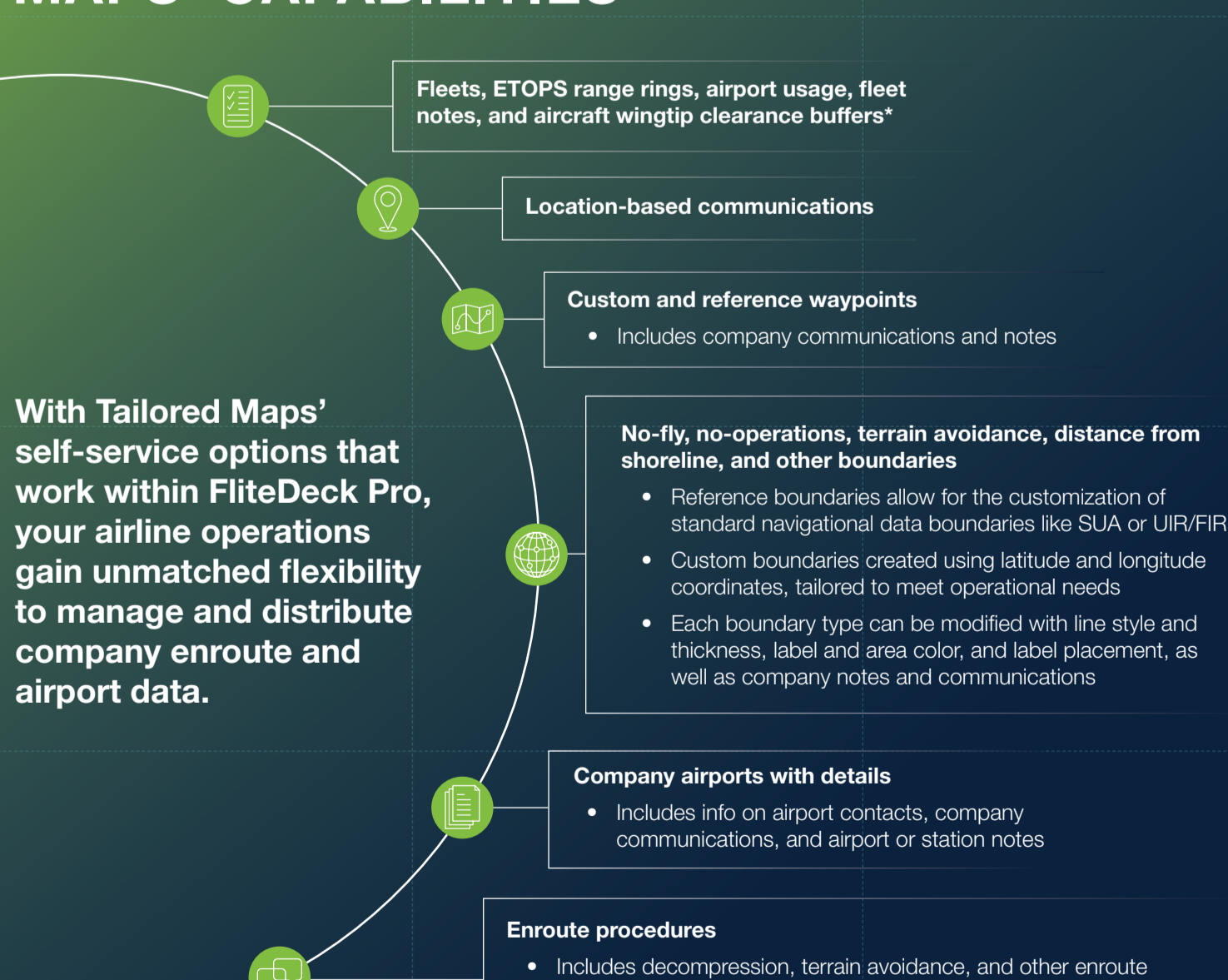


**More revenue opportunities.**  
Respond faster to scheduled and non-scheduled changes.



**Lower distribution costs.**  
Access data more easily with self-service content capabilities.

## A CLOSER LOOK AT TAILORED MAPS' CAPABILITIES



\*For Airport Moving Map subscribers only

## Ready to take control of your data?

To learn more about **Jeppesen Ground Controls Tailored Maps** and how it keeps ground crews and pilots in sync, please

**Visit:** [jeppesen.com/tailored-map](http://jeppesen.com/tailored-map)

**Contact** your account manager