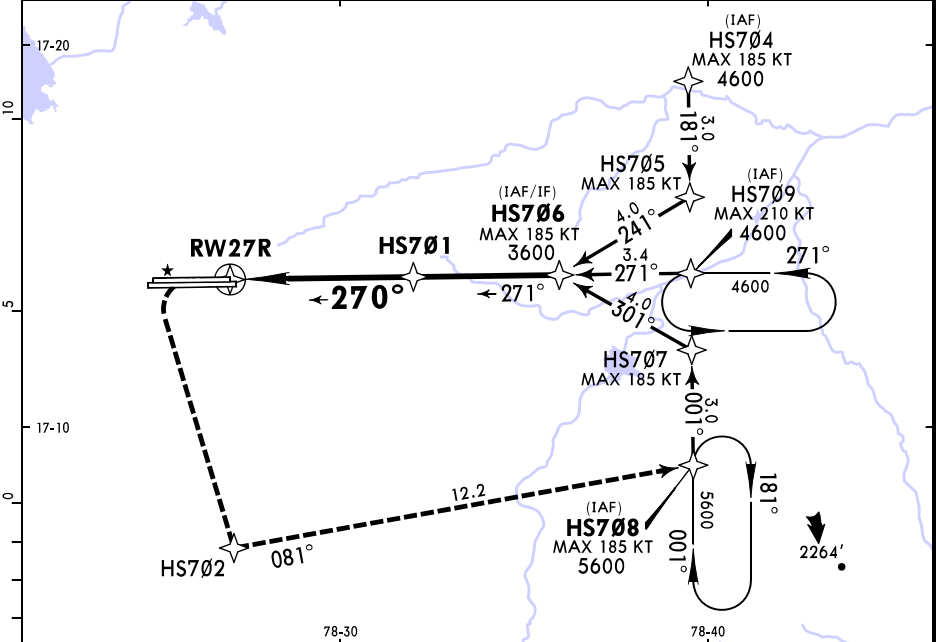
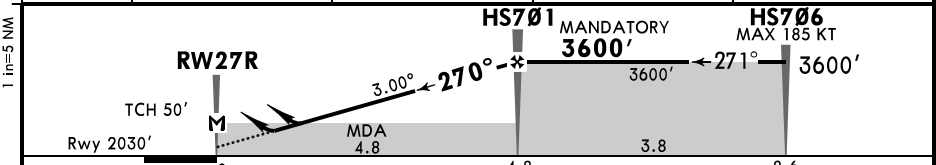


D-ATIS 126.475		HYDERABAD Approach (R) 120.25 125.55		SHAMSHABAD Tower 118.45 118.2		Ground 121.85
RNAV	Final Apch Crs <b>270°</b>	HS701 MANDATORY 3600' (1570')	LNAV/VNAV DA(H) 2350' (320')		Apt Elev 2030' Rwy 2030'	3600
<b>MISSED APCH:</b> Climb STRAIGHT AHEAD, when passing 2500', climbing turn LEFT direct to HS702, then turn LEFT to HS708 and join holding at 5600' or as directed. MAX 210 KT. Do not turn before RW27R.						
Alt Set: hPa		Rwy Elev: 72 hPa		Trans level: By ATC		Trans alt: 7000'
RNP apch.	1. CAUTION: Identify rwy 27R before landing. 2. Baro-VNAV not authorized below 10°C and above 40°C.					MSA ARP



DIST to RW27R	2.0	3.0	4.0	4.8
ALTITUDE	2720'	3040'	3360'	3600'



Gnd speed-Kts	70	90	100	120	140	160	HS701	HS706	HS702
Glide Path Angle	3.00°	372	478	531	637	849	210 KT MAX	2500' ↑	5600' LT
MAP at RW27R									↻

PANS OPS	<b>Std/State</b>		STRAIGHT-IN LANDING	
	LNAV/VNAV		LNAV	
	DA(H) 2350' (320')		MDA(H) 2440' (410')	
	ALS out		ALS out	
A	R1000m		R1500m	
B	R1400m		R1500m	
C			R1900m	
D			R1900m	

1 VNAV DA(H) in lieu of MDA(H) requires height loss adjustment.  
CHANGES: New procedure. © JEPPESEN, 2022. ALL RIGHTS RESERVED.