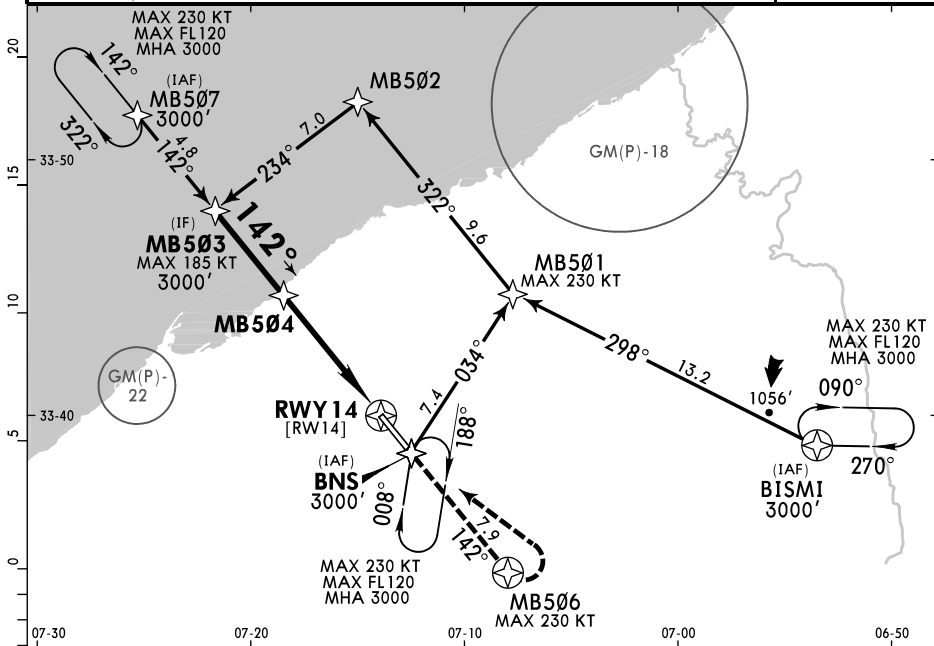


ADDITIONAL RUNWAY INFORMATION

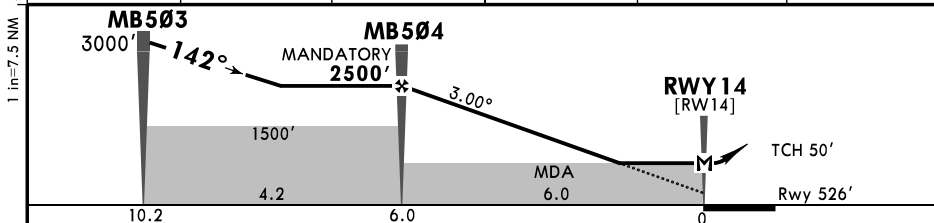
RWY	RL (60m)	PAPI-L (angle 3.0°)	USABLE LENGTHS		TAKE-OFF	WIDTH
			Threshold	Glide Slope		
14	RL (60m)	PAPI-L (angle 3.0°)				148'
32	RL (60m)	ALS PAPI-L (angle 3.0°)	9186'	2800m		45m

TAKE-OFF				
RL & RCLM	RL	RL or RCLM	Adequate Vis Ref	
DAY	NIGHT	DAY	DAY	NIGHT
R300m		R400m		R/V500m
			NA	

MOHAMMED V Approach				*BENSLIMANE Tower	
119.9			118.2		
RNAV	Final Apch Crs 142°	MB504 MANDATORY 2500' (1974')	LNAV/VNAV DA(H) Refer to Minimums	Apt Elev 627'	3800
MISSED APCH: Climb STRAIGHT AHEAD to 3000'. At MB506 turn LEFT (MAX 230 KT) to BNS, or as directed.					
Alt Set: hPa		Rwy Elev: 19 hPa	Trans level: By ATC		Trans alt: 4000'
1. GNSS required. 2. Baro-VNAV not authorized below 0°C.					MSA ARP



DIST to RWY14	5.0	4.0	3.0	2.0	1.0
ALTITUDE	2168'	1849'	1531'	1213'	894'

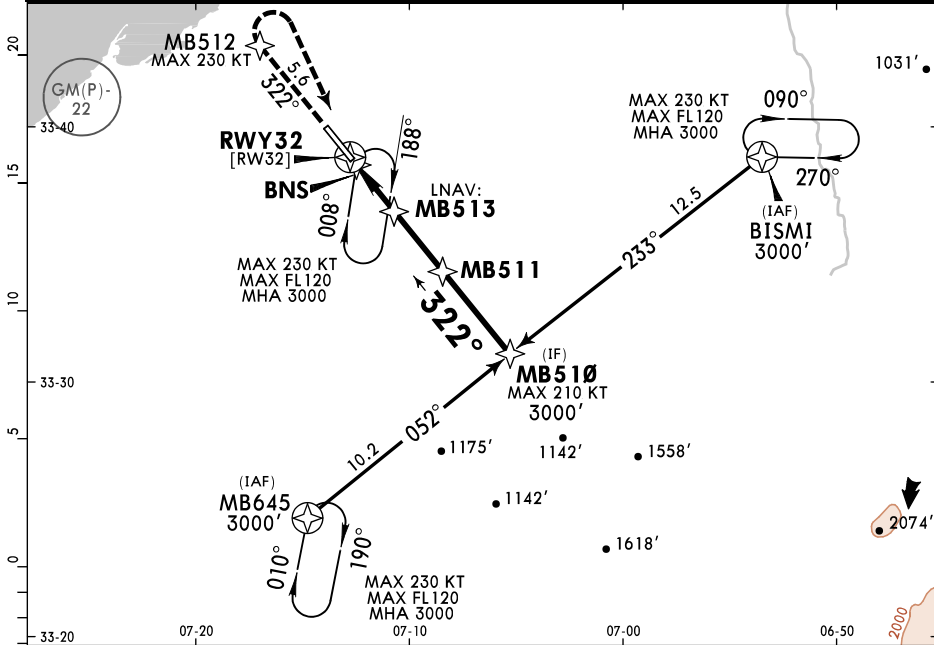


Gnd speed-Kts	70	90	100	120	140	160	PAPI-L	MB506 ↑ 230 KT MAX
Descent Angle 3.00°	372	478	531	637	743	849		
MAP at RWY14								

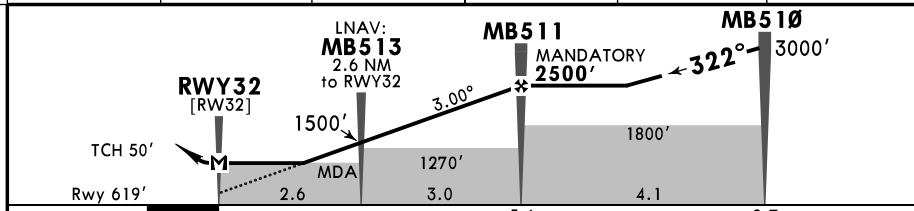
PANS OPS	STRAIGHT-IN LANDING				CIRCLE-TO-LAND					
	LNAV/VNAV				LNAV CDFA					
	DA(H) A: 830' (304') C: 850' (324') B: 840' (314') D: 870' (344')				DA/MDA(H) 910' (384')				Max Kts	MDA(H)
	A	R1400m			R1500m			100	1190'(563') V1500m	
	B	R1500m			R1800m			135	1240'(613') V1600m	
C	R1500m			R1800m			180	1380'(753') V2400m		
D	R1600m			R1800m			205	1480'(853') V3600m		

1 VNAV DA(H) in lieu of MDA(H) depends on operator policy.

MOHAMMED V Approach			*BENSLIMANE Tower		
119.9			118.2		
RNAV	Final Apch Crs 322°	MB511 MANDATORY 2500' (1881')	LNAV/VNAV DA(H) Refer to Minimums	Apt Elev 627'	3800
MISSED APCH: Climb STRAIGHT AHEAD to 3000'. At MB512 turn RIGHT (MAX 230 KT) to BNS, or as directed.				Rwy 619'	
Alt Set: hPa		Rwy Elev: 22 hPa	Trans level: By ATC		Trans alt: 4000'
1. GNSS required. 2. Baro-VNAV not authorized below 0°C.					
MSA ARP					



DIST to RWY32	1.0	2.0	3.0	4.0	5.0
ALTITUDE	987'	1306'	1624'	1943'	2261'



Gnd speed-Kts	70	90	100	120	140	160	ALS PAPI ↑ MB512 230 KT MAX
Descent Angle 3.00°	372	478	531	637	743	849	
MAP at RWY32							

PANS OPS	STRAIGHT-IN LANDING			CIRCLE-TO-LAND		
	LNAV/VNAV			LNAV CDFA		
	DA(H) BC: 1040' (421')			DA/MDA(H) 1270' (651')		
	A: 1020' (401') D: 1050' (431')			ALS out		
	ALS out			ALS out		
A	R1500m		R1500m		Max Kts	MDA(H)
B	R1500m		R1500m		100	1270' (643') V1500m
C	R1800m		R2400m		135	1270' (643') V1600m
D	R1800m	R2000m	R2400m		180	1380' (753') V2400m
					205	1480' (853') V3600m