



JEPPESEN[®]
Airport Moving Map Alert

!! URGENT !!

Date: 29 November 2022
Subject: Sydney, Australia
Kingsford Smith (YSSY)
Cycle 2212

Hotspot missing

Jeppesen Airport Moving Map and A816 formatted data for cycle 2212, effective 01 December 2022 contain incorrect data for Kingsford Smith; Sydney, Australia (YSSY). Australia DAP EAST 173/22, effective 01 December 2022 introduced new Hotspot at AER RWY 34R. This change is not reflected in cycle 2112 data.

**WE STRONGLY URGE YOU TO MAKE THIS INFORMATION AVAILABLE TO
APPROPRIATE CREW MEMBERS OR CUSTOMERS IMMEDIATELY!**

Revised data will appear in Jeppesen Airport Moving Map and A816 formatted data for cycle 2213, effective 29 December 2022. Until then this Alert will be posted on the Jeppesen Web site: [Notices and Alerts](#). Please refer to the local NOTAMs and Kingsford Smith, Sydney, Australia (YSSY) 10-9 chart dated 25 NOV 2022, effective 01 DEC 2022 for valid information.

If you have questions concerning this Airport Moving Map Alert, please contact Jeppesen Technical Support
at:

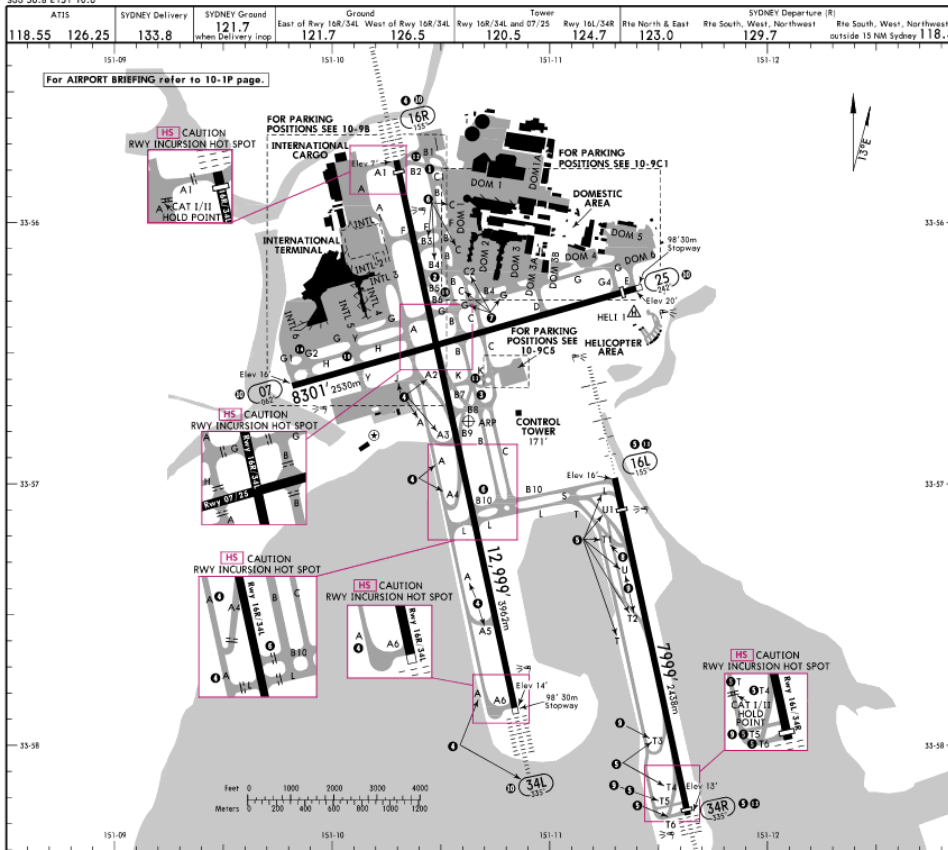
U.S. Toll Free: 1-800-537-7725

Direct: 1-303-328-4170

E-mail: gisdatasupport@boeing.com

Airport Moving Map Alerts are published to advise users of significant issues in Jeppesen Airport Moving Map and A816 data which may affect aircraft ground operations. These Alerts are distributed to affected Airport Moving Map users. Different avionics equipment and computer systems use and display Airport Moving Map and data derived from A816 differently. End Airport Moving Map and A816 data users should consult with their Service Provider for definitive information on whether their system is affected by this Alert.

YSSY_2212



- TURNING RESTRICTIONS**
- 1 Twy B - heading South - right turn onto Twy B2 not available.
 - 2 Twy B1 - west end - left turn onto Twy B2 not available.
 - 3 Twy B2 - west end - right turn onto Twy B1 not available.
 - 4 Twy B2 - heading East - left turns onto Twys B and C not available.
 - 5 Twy C - heading South - right turn onto Twy B2 not available.
 - 6 Twy B5 - right turn onto Twy B6 not available.
 - 7 Twy B5 - left turn onto Rwy 16R/34L not available.
 - 8 Twy B6 - left turn onto Twy B5 not available.
 - 9 Twy B6 - right turn onto Twy B5 not available.
 - 10 Twy B7 - left turn onto Twy B8 not available.
 - 11 Twy B7 - right turn onto Twy B8 not available.
 - 12 Twy B7 - turning onto Twy B9 not available.
 - 13 Twy B8 - heading into Twy B7 and Twy B9 not available.
 - 14 Twy B9 - turning into Twy B7 and Twy B8 not available.
 - 15 Twy A - heading North - right turn onto Twys A2, A3, A4, and A5 not available.
 - 16 Twy A2 - no entry from Twy A or Twy J.
 - 17 Twy A2 - left turn onto Rwy 16R/34L not available.
 - 18 Twys A2, A3, A4, and A5 - left turn onto Twy A not available.
 - 19 Twy A2 - heading South right turn onto Twy A2 not available.
 - 20 Twys L, T1, T2, T3, and T5 - left turn onto Twy T not available.
 - 21 Twy T - heading North - right turn onto Twys T1, T2, T3 and T5 not available.
 - 22 Twy T1 - turning onto Twy U not available.
 - 23 Twy T1 - is not available to aircraft exiting Rwy 34R.
 - 24 Twy T1 - is not available to aircraft on Twy T.
 - 25 Twys T3 and T4 - right turn onto Rwy 16L/34R not available.
 - 26 Twy T4 - turning onto Twy T5 not available.
 - 27 Twy T4 - left turn onto Twy T6 not available.
 - 28 Twy T5 - turning onto Twy T4 not available.
 - 29 Twy T6 - right turn onto Twy T4 not available.
 - 30 Twy U1 - turning onto Twy U not available.
 - 31 Twy 16L - heading South right turn onto Twy T5 not available.
 - 32 Twy 34R - left turn onto Twys T4, T5, or T3 not available.
- WINGSPAN RESTRICTIONS**
- 1 Intersection departure Rwy 16R/34L from Twys B3, B4, and B10 restricted to 118' (36m) MAX wingspan.
 - 2 Twy B turning West into Twy B3, Twy B4, and Twy B10 restricted to MAX 118' (36m) wingspan.
 - 3 Twy B4 - right turn onto Twy G restricted to MAX 118' (36m) wingspan.
 - 4 Twy B4 - heading North - left turn onto Twy C restricted to MAX 118' (36m) wingspan.
 - 5 Twy C - heading North - right turn onto Twy B4 restricted to MAX 118' (36m) wingspan.
 - 6 Twy C between Twy B2 and Twy F is restricted to aircraft with MAX 171' (52m) wingspan when an aircraft with 212' (65m) or greater wingspan operating on Twy B between Twy B2 and Twy F.
 - 7 Twy C between Twy F and Twy B4 speed restriction MAX 20 KT applies to all aircraft above 171' (52m) wingspan.
 - 8 Twy C between Twy F and Twy B4 restricted to MAX 198' (60.4m) wingspan.
 - 9 Twy G - left turn onto Twy B4 restricted to MAX 118' (36m) wingspan.
 - 10 Twy G - right turn onto Twy DOM2 restricted to MAX 118' (36m) wingspan.
 - 11 Twy C2 restricted to MAX 118' (36m) wingspan.
 - 12 Twy T1 restricted to 171' (52m) MAX wingspan.
 - 13 Twys T2, T3, T5 and U restricted to aircraft with less than 59' (18m) wheel base and MAX 118' (36m) wingspan due to 49' (15m) wide Twy.
 - 14 Twys 16R/34L and 07/25 aircraft greater than 118' (36m) wingspan U-turns on the runway not permitted.
 - 15 Combes anomaly for turboprop aircraft on intersection departure Rwy 16R at Twy F East, Twy B3 and Twy G East.
 - 16 Twy K run up bay restricted to MAX 75' (23m) wingspan.
 - 17 When an A380 is on Twy B2, Twy B1 restricted to aircraft MAX 171' (52m) wingspan.
 - 18 Twy 16L/34R all aircraft U-turns on runway not permitted.
 - 19 Intersection departures Rwy 34R from Twy T3 not available.
 - 20 Intersection departures Rwy 16L from Twy T1 not available.
 - 21 Twy 16L - heading South right turn onto Twy L, T2, and U not available except 12 sunrise to sunset only to non-jet aircraft with 98' (30m) MAX wingspan.
 - 22 Aircraft turning from Twy G into Twy G2 use minimum power.
 - 23 Twy B5 and Twy B6 not available to aircraft above 46,502 lbs (22,000 kg) MTOW. MAX tire pressure 203 PSI (1400 kPa).
 - 24 Twy H not available during Rwy 07 arrivals.
 - 25 Twy H not available during Rwy 25 arrivals when visibility is less than 5000m or cloud base less than 1500'.

CHANGES: Rwy incursion hot spot added, Twy A1 and Twy T holding points added, Twy A5 holding point withdrawn.