

# Jeppesen Fleet Insight

## Next Generation Flight Tracking

Fleet Insight is uniquely positioned to help dispatchers, operations personnel and managers stay aware and ahead of changing conditions. It assists in mitigating the impact of disruptive events, gaining situational awareness and optimizing operational performance. For commercial airlines seeking a holistic overview of their aircraft, Fleet Insight provides insights into current fleet status and helps in the decision-making processes. The application utilizes Jeppesen's API economy and data streams to stay ahead with market-leading innovation, and deliver capabilities that are unmatched by the competition.

### Flight Tracking

- ✔ Live position data helps in sharing important situations and events with operations, and supports you in fulfilling the GADSS mandate if necessary.
- ✔ Position report data retention and extraction (supports GADSS compliancy)
  - All aircraft position data is stored and available for you to visualize or download with a few easy clicks.
- ✔ Display active flights in roster
  - Select and show all current flights in a roster-style display to have the full overview of your flight operations.
- ✔ Gantt chart with current flights
  - Gantt chart provides a single page view of the overall fleet operations.
- ✔ Worldwide traffic
  - Choose to display all traffic in the area of interest. You can filter and select the traffic with many individual options.

### Flight Following

- ✔ Historical position for flight data (90 days and configurable)
  - All flight information is stored and available for analytical tasks. Storage time is customer configurable.

- ✔ View actual vs. planned flight route
  - All selected flights are shown with the actual flight track and, if the flight plan is available, with the planned flight route to destination.
- ✔ Flight progress and status on flight time and distance
  - Flight time flown and remaining as well as distances flown and remaining will be calculated and shown in the side bar.
- ✔ OOOI times support for ACARS integration available
  - With ACARS messages available, block times are shown and updated with every message.
- ✔ Speed and altitude graph (actual and planned comparison)
  - While the flight is progressing, a graphical display is available to show and compare planned speed and altitude with actual progression.
- ✔ Insight flight events (missed position report, squawk, vertical and horizontal OFP deviation, holding, excessive vertical speed, flight delay DEP-ARR, destination diversions)
  - A variety of alert notifications for each event in a particular flight helps getting the necessary insights to support the decision-making process. Color codes help identify the most important situations. All alert thresholds are configurable to accommodate your needs.
- ✔ URL direct link access flight/airport
  - Helps approved users share important situation details, so each stakeholder is able to see the same information level and is part of the decision-making process.

## Mapping

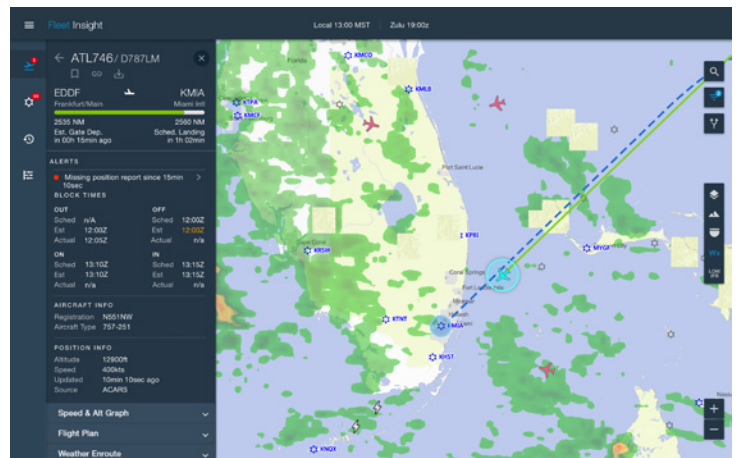
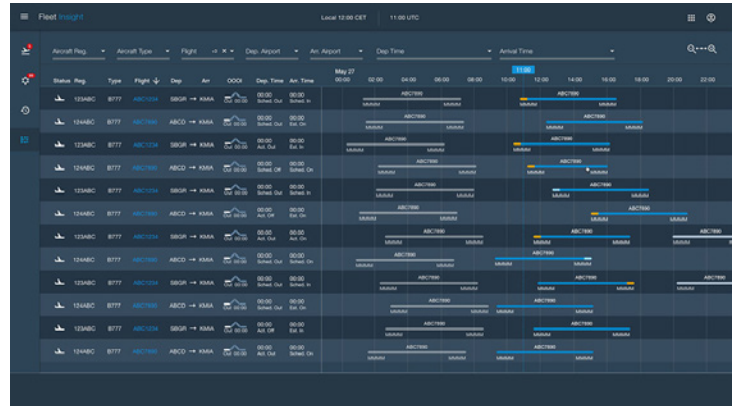
- ✔ Aviation chart with navigation data and airport mapping database
  - Jeppesen world class data is displayed on a well-known chart with the same look and feel across our product portfolio.
- ✔ Airport with runway information
  - Based on Jeppesen’s data, an airport diagram with detailed runway and taxiway information is displayed where available.
- ✔ Quick route plotting on map
  - New routes can be easily created and displayed to explore alternative options.

## Weather and Flight Information (NOTAMS)

- ✔ Textual weather for flight (SIGMET, AIRMET, PIREP (decoded))
  - All necessary weather information is retrieved based on the planned flight route.
- ✔ Textual weather for airport (coded and decoded METAR, TAF)
  - At the airport of origin and destination the weather information is also displayed. Weather information is available globally for all airports.
- ✔ NOTAMS - Operational Flight Plan (OFF)
  - Through OFF, all NOTAMS for the planned flight are available.

## Application Access

- ✔ My Boeing Fleet deployment and Integration
  - Easy access for the whole operation team is handled through MyBoeingFleet. A designated administrator is able to manage all accounts.



## System Requirements

- ✔ Internet connection
- ✔ Operating System Windows 10, CPU: i5-7xxx or above, RAM: 8GB+, Display Resolution: min. 1366x768 - max. 3840x2160
- ✔ Supported browser in Windows OS: Google Chrome (2 latest major versions), Firefox (2 latest major versions), Microsoft Edge (latest major version)

## Learn more about what we offer.

Find out how Fleet Insight can optimize your operations by contacting your account representative or visiting [jeppesen.com/fleetinsight](https://jeppesen.com/fleetinsight).