

# Jeppesen Fleet Insight

## Next Generation Flight Tracking

### Next Generation Flight Tracking

Fleet Insight is a cloud-hosted one-stop-shop flight tracking solution that provides airlines with detailed insights into the current status and performance of their entire fleet. Integrating flight plan, weather, NOTAMs, Jeppesen NavData® and much more, Fleet Insight is uniquely positioned to help dispatch and operations personnel to increase situational awareness and stay ahead of changing flight conditions. Providing a wide range of flight insights and a holistic overview of fleet status, it enables flight operators to mitigate the impact of disruptive events and to optimize operational performance. Fleet Insight utilizes Jeppesen's unique data capabilities paired with the power of Boeing AnalytX to provide operators with a level of insight unmet by the competition.

### Flight Tracking

- Global 4D flight tracking (supports GADSS compliance)
  - Powered by terrestrial ADS-B data (FlightRadar24), satellite ADS-B data (Aireon) and the option to include the customer's ACARS data, an aircraft's position, including altitude, latitude, longitude is reported at least every 15 minutes.
- Active and scheduled flights display in roster
  - Show all current and scheduled flights in a roster for a full overview of your flight operations. Desk assignment, filter and bookmark functionalities are available to show only relevant flights. Fleet Insight is flight plan system agnostic and can integrate with any system in Arinc633 format.
- Actual vs. planned and ATC cleared flight routes
  - All selected flights are shown with the actual flight track and, if the flight plan is available, with the planned flight route to destination as well as the ATC cleared route using SWIM-FAA and NOP-Eurocontrol route information.
- Historic flight position report data retention and extraction (supports GADSS compliance).

- All aircraft position data is stored for 90 days and available to visualize or download. NOTAM and alert information are accessible up to 90 days in the flight history.
- Gantt chart for holistic fleet overview
  - A Gantt chart provides a single page view of the overall fleet operations.
- Worldwide traffic
  - Display worldwide traffic in any area of interest. Advanced filter options help to show only relevant areas.

### Flight Status Insights

- Flight event insights
  - A wide and continuously growing range of insights into flight events, including delayed or early arrivals and departures, squawks, lateral and vertical flight plan deviations, holding and diversion detection, missed position report and excessive vertical speed. Color codes indicate alert severity. All alert thresholds are configurable.
- Flight progress and status on flight time and distance
  - A progress bar indicates the time and distance flown as well as the time and distance remaining for a particular flight.
- OOOI times support
  - With the customer's ACARS messages available, block times are shown and updated with every message.
  - Alternatively, OOOI times support is provided by Boeing API service where applicable.
- Phase of flight history
  - Integrates with the Boeing flight events API to provide detailed information on when the aircraft entered a new phase of flight.
- Speed and altitude graph (actual and planned comparison)
  - While the flight is progressing, a graphical display is available to visualize and compare planned speed and altitude with the actual profile and progression.

# Jeppesen Fleet Insight

## Next Generation Flight Tracking

### Smart Maps

- Aviation charts powered by Jeppesen NavData®
  - Integrates with Jeppesen's well-known NavData® to provide detailed terrain, obstacle, airways and airspace information as well as waypoint depiction with the same look and feel across the product portfolio.
- Over 1,000 smart airport vector maps
  - Offers detailed runway and taxiway information through Jeppesen's airport mapping database, allowing you to follow an aircraft up to its parking position.
- Quick route plotting on map
  - New routes can be easily created and displayed to explore alternative options and compare distances.
- Distance and bearing tool
  - Easily analyze the magnetic bearing and distance between two positions on the map.

### Weather and NOTAMs

- Graphical weather overlays
  - State-of-the-art graphical weather with multiple current and forecast overlays, including turbulence, radar reflectivity, icing, volcanic ash, SIGMETS and many more. Available for the entire map and on enroute basis. All graphical weather information is provided by The Weather Company.
- Textual flight weather (SIGMET, AIRMET, PIREP (decoded))
  - Flight relevant weather information is retrieved based on the planned flight route.
- Textual airport weather (coded and decoded METAR, TAF)
  - Weather information is available globally for all airports.
- Flight NOTAMs
  - Through OFP, all NOTAMs for the planned flight are available.
- Airport NOTAMs
  - Provided by the Jeppesen NOTAM API.

### Usability

- Intuitive interface for ease of use
- Minimal to no training required for quick onboarding
- Advanced filter and search functionalities

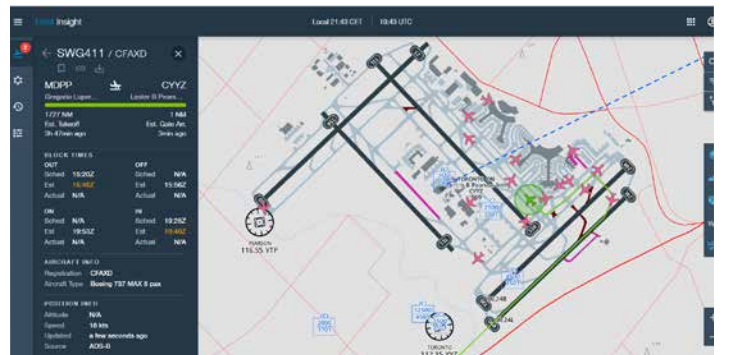
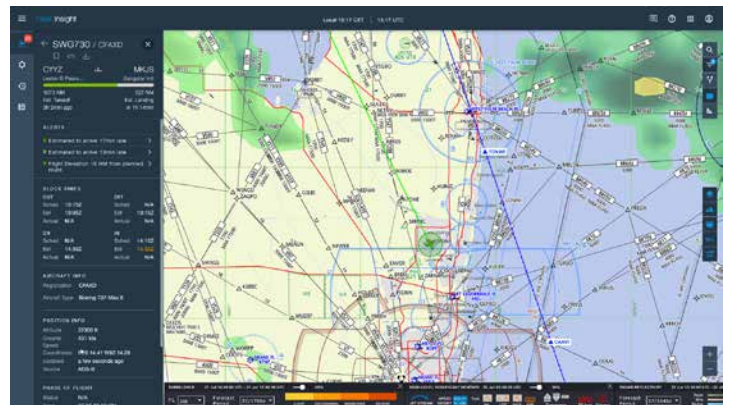
### Application Access

- Different access options, including
  - MyBoeingFleet: Easy access for the whole operation team through MyBoeingFleet. A designated administrator is able to manage all accounts.

- Federation integration: Single Sign On enabled via federation integration with your airline system.
- Direct access: Fleet Insight can also be accessed directly via a URL after setup.

### Available Add Ons

- Satellite ADS-B data
  - For airlines requiring global tracking coverage, Satellite ADS-B data provided by Aireon can be licensed as an add on.
- Cloud hosting
  - State-of-the-art cloud hosting on Microsoft Azure. Different setup configurations are available as add ons.



### System Requirements

- Internet connection
- Operating System Windows 10, CPU: i5-7xxx or above, RAM: 8GB+, Display Resolution: min. 1366x768 - max. 2560x1440
- Supported browser in Windows OS: Google Chrome (2 latest major versions), Firefox (2 latest major versions), Microsoft Edge (latest major version)

Learn more about Fleet Insight at [jeppesen.com/fleetinsight](https://jeppesen.com/fleetinsight)