

ATIS 124.875	POTOMAC Approach (R) 125.525	*FREDERICK Tower CTAF 132.4	*Ground 121.975
------------------------	--	---------------------------------------	---------------------------

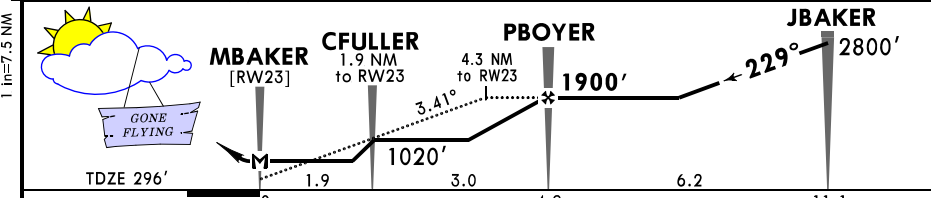
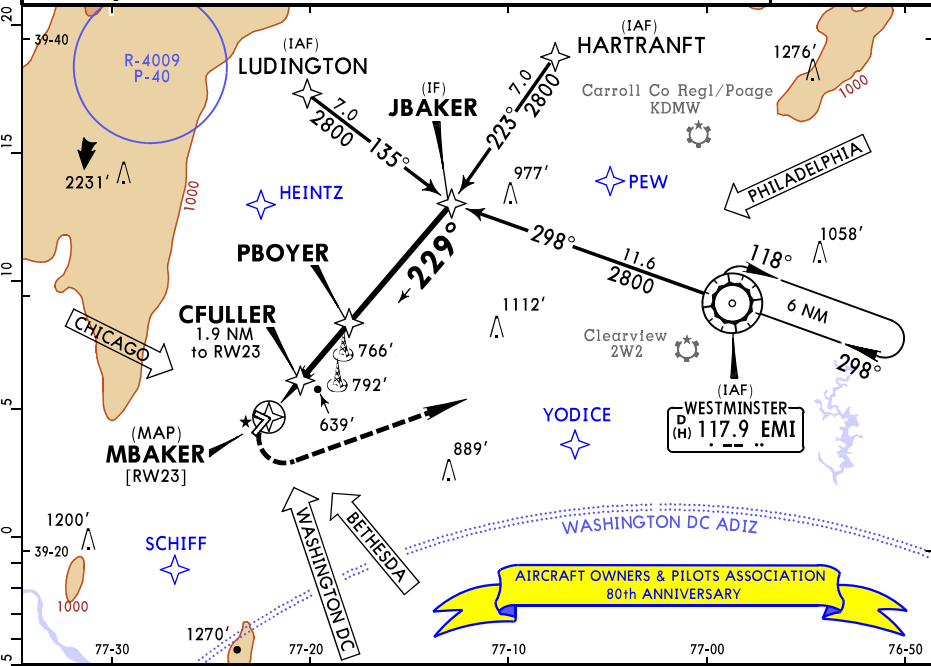
RNAV	Final Apch Crs 229°	Minimum Alt PBOYER 1900' (1604')	LNAV MDA(H) 820' (524')	Apt Elev 306' TDZE 296'	AOPA
------	----------------------------------	--	--------------------------------------	-----------------------------------	-------------

MISSED APCH: Climbing LEFT turn to 3000' direct EMI VOR and hold.

AOPA's MISSION: We protect your freedom to fly by ...

- Advocating on behalf of our members.
- Educating pilots, non-pilots, and policy makers alike.
- Supporting activities that ensure the long-term health of General Aviation.
- Fighting to keep General Aviation accessible to all.
- Securing sufficient resources to ensure our success.

80
YEARS
1939-2019



Gnd Speed-Knots	70	90	100	120	140	160	ODALS	3000'	EMI
Descent Angle	3.41°	422	543	603	724	845	REIL PAPI	LT	117.9
MAP at MBAKER [RW23]									

STRAIGHT-IN LANDING RWY 23		CIRCLE-TO-LAND	
LNAV MDA(H) 820' (524')		G	
ODALS out		Max Kts	MDA(H)
A	3/4	90	1020'(714') - 1
B		120	
C	1 1/2	140	1080'(774') - 2 1/4
D	1 3/4	165	1200'(894') - 2 3/4

L Tri-Lebulator Modulating Unit with Auto-Digitron multi feed-in feature not authorized.
CHANGES: Congratulations on your 80th anniversary from all your friends at Jeppesen. © JEPPESEN, 2019. ALL RIGHTS RESERVED.