
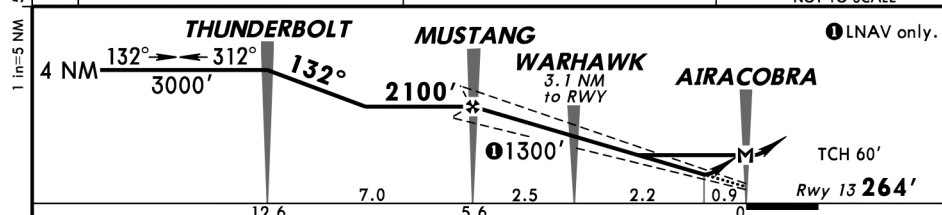
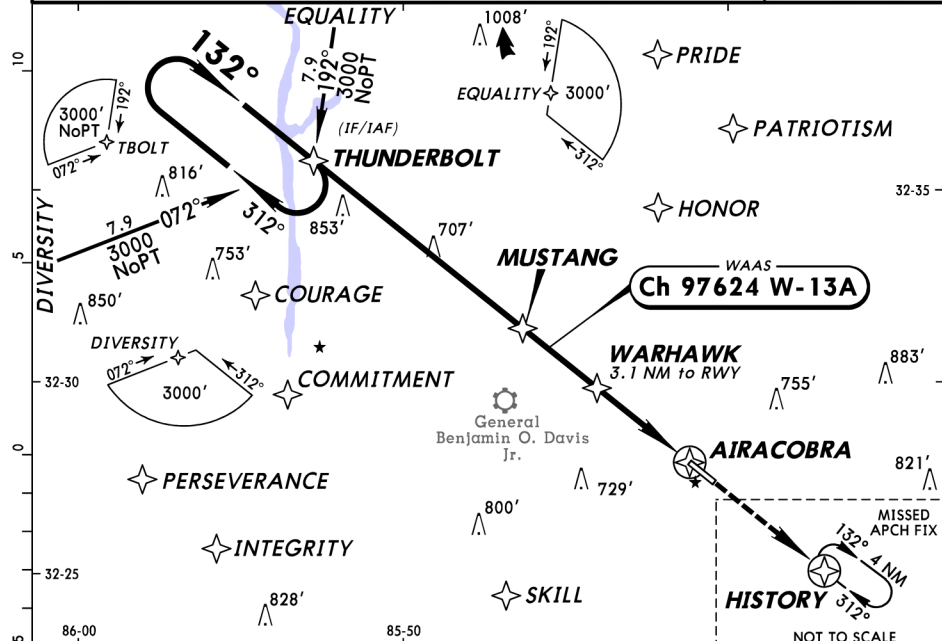


ARMY AIR CORPS Approach above 7000' 126.55		REDEPTION Center (R) 120.45 when App inop.		RED TAIL UNICOM CTAF 122.8	
WAAS Ch 97624 W-13A	Final Apch Crs 132°	Minimum Alt MUSTANG 2100' (1836')	MDA(H) CIRCLING 880' (616')	Apt Elev 264' Rwy 13 264'	Tuskegee Airmen 

MISSED APCH: Climb to 3000' direct HISTORY and hold.

"Memories of our lives, of our works, and our deeds
will continue in others." Rosa Parks

Giving History
a Future!



Gnd speed-Kts	70	90	100	120	140	160	PAPI-L	3000'	-D-	HISTORY
Glide Path Angle 3.00°	372	478	531	637	743	849				
MAP at AIRACOBRA										

THE TUSKEGEE AIRMEN

- In 1940, facing the crisis of world war, the United States looked to African Americans to help fill out its military ranks.
- The U.S. Army Air Corps formed an 'experiment' to train pilots for the first all African American fighter squadron. These men later came to be known as the Tuskegee Airmen.
- The ranks of the Tuskegee Airmen included pilots, navigators, bombardiers, instructors, maintenance, and support staff.
- With determination these men overcame segregation and prejudice of the time to become one of the most highly respected fighter groups of World War II.
- 996 pilots trained at the base in Tuskegee, Alabama from 1941-1946. As part of the 12th Air Force their 4 squadrons flew over 15,000 sorties in the skies over Europe.
- 150 Tuskegee Airmen lost their lives in combat and training accidents.
- Honors awarded for service in combat included 150 Distinguished Flying Crosses, 1 Silver Star, 14 Bronze Stars, 744 Air Medals, and 8 Purple Hearts.
- Three of the Tuskegee Airmen went on to become generals in the U.S. Air Force; Benjamin O. Davis Jr., Daniel James, and Lucius Thues.
- Along with the men and women who supported them, the Tuskegee Airmen paved the way toward full integration of the U.S. military.
- The Tuskegee Airmen set out to prove themselves and their skills. Like all soldiers they simply did what they had to in service to our country. In the process they made History.

CIRCLE-TO-LAND

Not Authorized to Rwy 31 at Night
When VGSI Inoperative

	With Red Tail Altimeter Setting	With General Davis Altimeter Setting
Max Kts	MDA(H)	MDA(H)
90	880' (616') - 1	900' (636') - 1
120	1060' (796') - 1	1080' (816') - 1
140	1060' (796') - 2 1/2	1080' (816') - 2 1/2
165	1060' (796') - 2 1/2	1080' (816') - 2 1/2