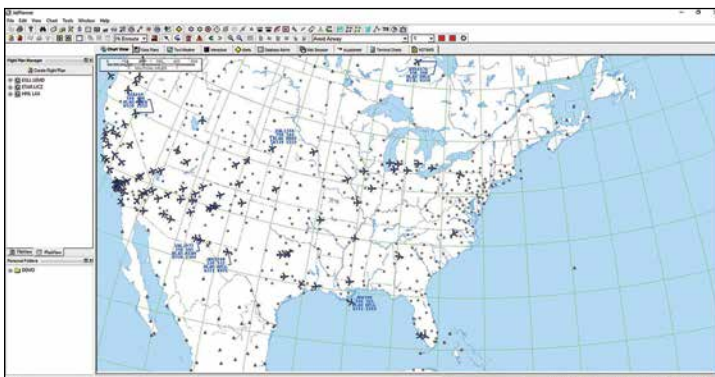
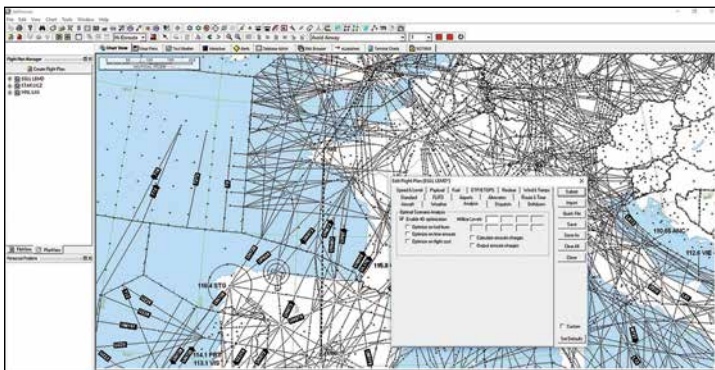




Jeppesen JetPlanner

Increased efficiency in flight planning

JetPlanner, Jeppesen's cornerstone flight-planning product, provides commercial and business aviation operators with basic flight planning and dispatch operations. JetPlanner's PC-based graphical interface makes access to the JetPlan Engine simpler and more intuitive than ever before. Leveraging the JetPlan Engine optimization system, dispatchers and operations staff can easily generate optimized flight plans that minimize operational cost. When combined with Jeppesen NavData in ARINC 424 format, JetPlanner offers unparalleled capabilities.



The JetPlanner solution includes:

- ✓ Auto flight scheduling
- ✓ Prepare optimized operational flight plans (OFF)
- ✓ Graphical NavData
- ✓ Aircraft situational display
- ✓ Graphic and text weather
- ✓ Graphic route plot
- ✓ ETOPS/ETP range rings
- ✓ Flight plan comparison
- ✓ Weather alerts
- ✓ Enroute charge retrieval
- ✓ Address book
- ✓ XML output for data mining
- ✓ Receiver Autonomous Integrity Monitoring (RAIM)
- ✓ Dispatch view
- ✓ Profile view

Solution Capabilities

JetPlanner is well-suited for basic flight planning and dispatch operations. With JetPlanner, users can quickly and easily:

- ✔ Create and save an unlimited number of flight plan requests
- ✔ Retrieve, view, print and save flight plans, weather and NOTAMs
- ✔ Modify and resubmit saved requests to the JetPlan Engine
- ✔ Retrieve, view, print and animate graphical weather maps
- ✔ Schedule flight plan requests, weather requests and messages using rules
- ✔ Transmit flight plans, weather, messages and NOTAMs via email or fax
- ✔ Uplink flight plans via ARINC DIRECT
- ✔ File flight plans with air traffic control
- ✔ Validate European flight plans through Central Flow Management Unit (CFMU)
- ✔ Retrieve and view flight-specific RAIM prediction reports
- ✔ Retrieve and view enroute charges
- ✔ Plot flight plan routes with weather graphics on enroute charts
- ✔ View planned routes against ETOPS and other constraints
- ✔ Display route profiles with relation to terrain and restricted airspace
- ✔ Dispatch view of flight plans

Solution Value

- ✔ Simple installation – TCP/IP connectivity allows operators to use their own network to connect to the JetPlan Engine and reduce IT overhead costs
- ✔ Offline request building and time-triggering capabilities saves time
- ✔ Customized flight plan outputs are formatted to meet the customer's requirements
- ✔ Access to [JetPlan.com](https://www.jetplan.com) at no additional cost

Learn more about what we offer.

For more information about Jeppesen JetPlanner, contact us at:

Americas: 1.800.353.2108

Europe: +49 6102 5070

Asia Pacific: +65 6411 5888

UK and Ireland: +44 1293 842 400

China: +86 10 6539 1768